

WHELEN[®] ENGINEERING COMPANY INC.

51 Winthrop Road
 Chester, Connecticut 06412-0684
 Phone: (860) 526-9504
 Fax: (860) 526-4078
 Internet: www.whelen.com
 Sales e-mail: autosale@whelen.com
 Canadian Sales e-mail: autocan@whelen.com
 Customer Service e-mail: custserv@whelen.com

Installation Guide: Lo-Pro™ Siren Speaker Models SA40 & SA41 (for Edge® Series Lightbars)

DANGER! Sirens produces extremely loud emergency warning tones! Exposure to these tones without proper and adequate hearing protection, could cause ear damage and/or hearing loss! The Occupational Safety & Health Administration (www.osha.gov) provides information necessary to determine safe exposure times in Occupational Noise Exposure Section 1910.95. Until you have determined the safe exposure times for your specific application, operators and anyone else in the immediate vicinity should be required to wear an approved hearing protection device. **FAILURE TO FOLLOW THIS RECOMMENDATION COULD CAUSE HEARING LOSS!**

Safety First

This document provides all the necessary information to allow your Whelen product to be properly and safely installed. Before beginning the installation and/or operation of your new product, the installation technician and operator must read this manual completely. Important information is contained herein that could prevent serious injury or damage.

- Proper installation of this product requires the installer to have a good understanding of automotive electronics, systems and procedures.
- If mounting this product requires drilling holes, the installer **MUST** be sure that no vehicle components or other vital parts could be damaged by the drilling process. Check both sides of the mounting surface before drilling begins. Also de-burr any holes and remove any metal shards or remnants. Install grommets into all wire passage holes.
- If this manual states that this product may be mounted with suction cups, magnets, tape or Velcro®, clean the mounting surface with a 50/50 mix of isopropyl alcohol and water and dry thoroughly.
- Do not install this product or route any wires in the deployment area of your air bag. Equipment mounted or located in the air bag deployment area will damage or reduce the effectiveness of the air bag, or become a projectile that could cause serious personal injury or death. Refer to your vehicle owner's manual for the air bag deployment area. The User/Installer assumes full responsibility to determine proper mounting location, based on providing ultimate safety to all passengers inside the vehicle.
- For this product to operate at optimum efficiency, a good electrical connection to chassis ground must be made. The recommended procedure requires the product ground wire to be connected directly to the **NEGATIVE (-)** battery post.
- If this product uses a remote device to activate or control this product, make sure this control is located in an area that allows both the vehicle and the control to be operated safely in any driving condition. **DO NOT ATTEMPT TO ACTIVATE OR CONTROL THIS DEVICE IN A HAZARDOUS DRIVING SITUATION.**
- It is recommended that these instructions be stored in a safe place and referred to when performing maintenance and/or reinstallation of this product.
- **FAILURE TO FOLLOW THESE SAFETY PRECAUTIONS AND INSTRUCTIONS COULD RESULT IN DAMAGE TO THE PRODUCT OR VEHICLE AND/OR SERIOUS INJURY TO YOU AND YOUR PASSENGERS!**

ACTIVATION OF THIS SIREN MAY DAMAGE UNPROTECTED EARS!



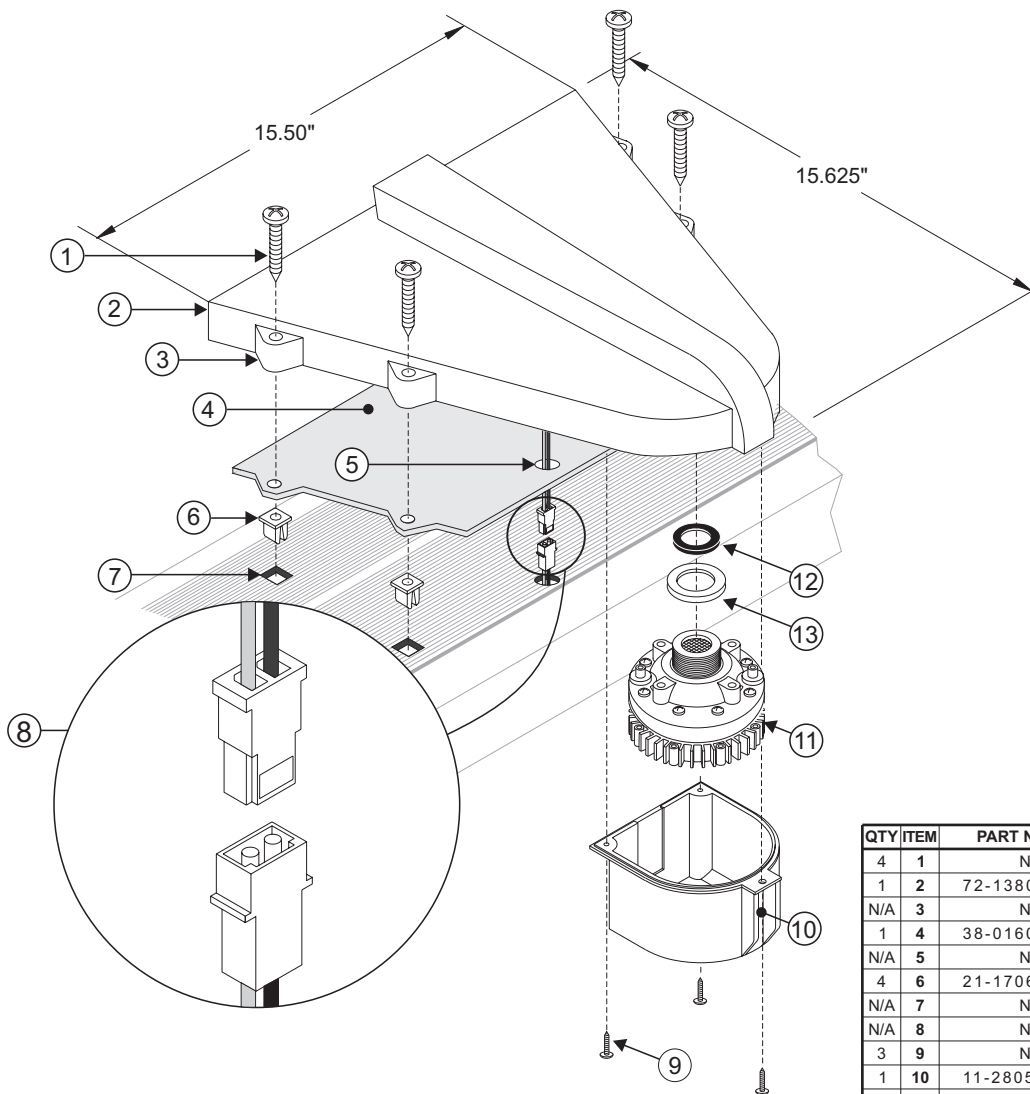
CAUTION

Loud siren noise can cause hearing damage and/or loss. Refer to OSHA Section 1910.95 prior to putting ANY siren into service!

For warranty information regarding this product, visit www.whelen.com/warranty

Installation of the Whelen Lo-Pro™ Siren Speaker is very simple, provided you follow the directions. Your lightbar has been prepared at the factory to accept the Lo-Pro, so all that's left to be done is the actual mounting of the siren.

1. Feed the AMP connector (8) coming from the lightbar, through the guide hole in the Neoprene Foam Gasket (5). Connect the lightbar's AMP connector to the Lo-Pro's AMP connector. A recessed area is provided to keep wires from being pinched between the lightbar and the Lo-Pro.
 2. Align Gasket Mounting Holes with the installation grommets (6). Make sure that these grommets are securely installed in their respective holes.
 3. Position the foam gasket (4) over the four grommets (6). Now align the sirens mounting flange (3) so that the pan head screws (1) may be inserted into their mounting grommet's.
- IMPORTANT NOTE!** Do **NOT** use mounting screws longer than those provided with the Lo-Pro or they will come into contact with your lightbar's power supply, causing damage and interfering with proper lightbar operation.
4. Tighten the pan head screws securely.



QTY	ITEM	PART NUMBER	DESCRIPTION
4	1	N/A	#10 x 1 1/4" Phillips PH Screw
1	2	72-1380792-07	Lo-Pro Siren Housing
N/A	3	N/A	Lo-Pro Mounting Flange
1	4	38-0160691-00	Foam Gasket
N/A	5	N/A	AMP Guide Hole
4	6	21-17060704-3	Fastex® Plasti-Grommet
N/A	7	N/A	Grommet Hole
N/A	8	N/A	AMP Connectors
3	9	N/A	#6 x 1/4" Phillips PH Screw
1	10	11-280566-000	Dust Cover
1	11	43-0263146-00	SD210R Siren Driver
1	12	38-0222180-00	Rubber Gasket
1	13	38-0222181-00	Fiber Gasket