

WHELEN[®]

ENGINEERING COMPANY INC.

51 Winthrop Road
Chester, Connecticut 06412-0684
Phone: (860) 526-9504
Fax: (860) 526-4078
Internet: www.whelen.com
Sales e-mail: autosale@whelen.com
Canadian Sales e-mail: autocan@whelen.com
Customer Service e-mail: custserv@whelen.com

Mounting Guide: Whelen Crossbar Model VPCB

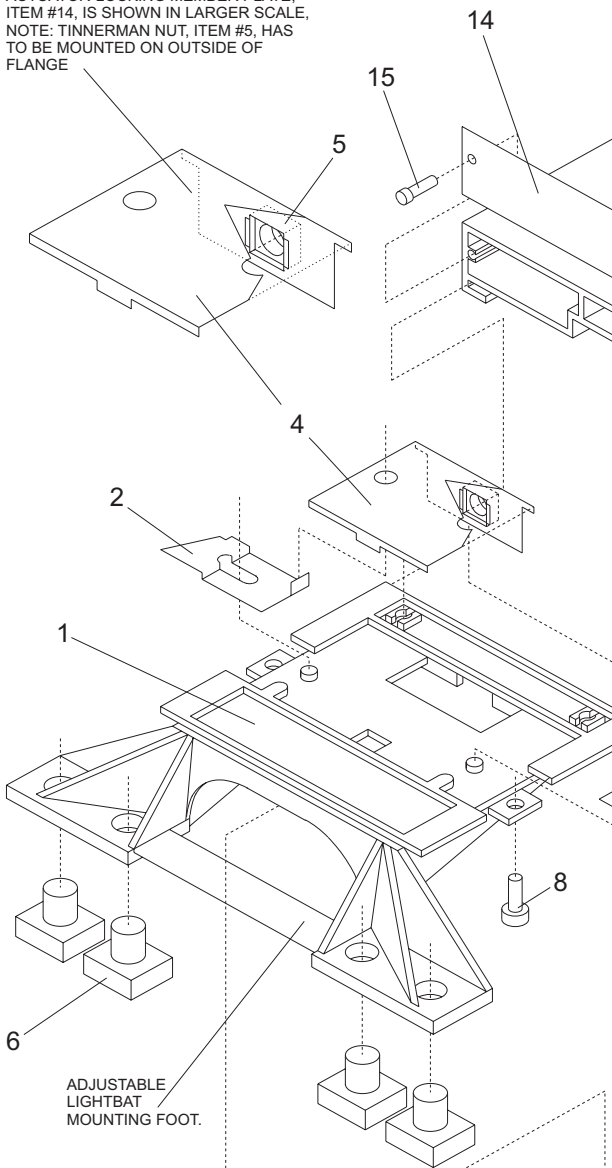
Safety First

This document provides all the necessary information to allow your Whelen product to be properly and safely installed. Before beginning the installation and/or operation of your new product, the installation technician and operator must read this manual completely. Important information is contained herein that could prevent serious injury or damage.

- Proper installation of this product requires the installer to have a good understanding of automotive electronics, systems and procedures.
- If mounting this product requires drilling holes, the installer **MUST** be sure that no vehicle components or other vital parts could be damaged by the drilling process. Check both sides of the mounting surface before drilling begins. Also de-burr any holes and remove any metal shards or remnants. Install grommets into all wire passage holes.
- If this manual states that this product may be mounted with suction cups, magnets, tape or Velcro[®], clean the mounting surface with a 50/50 mix of isopropyl alcohol and water and dry thoroughly.
- Do not install this product or route any wires in the deployment area of your air bag. Equipment mounted or located in the air bag deployment area will damage or reduce the effectiveness of the air bag, or become a projectile that could cause serious personal injury or death. Refer to your vehicle owner's manual for the air bag deployment area. The User/Installer assumes full responsibility to determine proper mounting location, based on providing ultimate safety to all passengers inside the vehicle.
- For this product to operate at optimum efficiency, a good electrical connection to chassis ground must be made. The recommended procedure requires the product ground wire to be connected directly to the **NEGATIVE (-)** battery post.
- If this product uses a remote device to activate or control this product, make sure that this control is located in an area that allows both the vehicle and the control to be operated safely in any driving condition.
- Do not attempt to activate or control this device in a hazardous driving situation.
- This product contains either strobe light(s), halogen light(s), high-intensity LEDs or a combination of these lights. Do not stare directly into these lights. Momentary blindness and/or eye damage could result.
- Use only soap and water to clean the outer lens. Use of other chemicals could result in premature lens cracking (crazing) and discoloration. Lenses in this condition have significantly reduced effectiveness and should be replaced immediately. Inspect and operate this product regularly to confirm its proper operation and mounting condition. Do not use a pressure washer to clean this product.
- It is recommended that these instructions be stored in a safe place and referred to when performing maintenance and/or reinstallation of this product.
- **FAILURE TO FOLLOW THESE SAFETY PRECAUTIONS AND INSTRUCTIONS COULD RESULT IN DAMAGE TO THE PRODUCT OR VEHICLE AND/OR SERIOUS INJURY TO YOU AND YOUR PASSENGERS!**

For warranty information regarding this product, visit www.whelen.com/warranty

ACTUATOR-LOCKING MEMBER PLATE, ITEM #14, IS SHOWN IN LARGER SCALE. NOTE: TINNEMAN NUT, ITEM #5, HAS TO BE MOUNTED ON OUTSIDE OF FLANGE



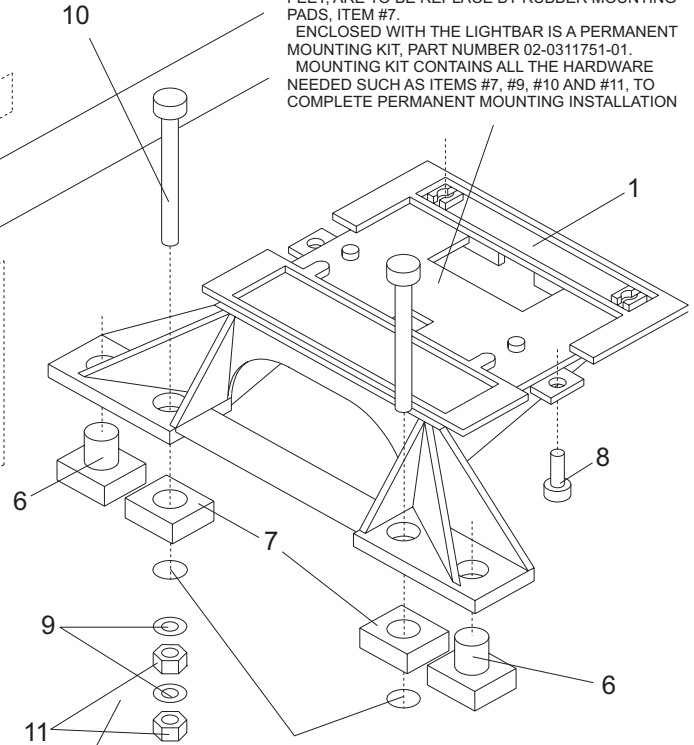
LIGHTBAR MOUNTING BASE.

SHOWN BELOW IS LIGHTBAR MOUNTING FEET USED FOR PERMANENT MOUNTING STYLE.

WHEN LIGHTBAR IS ORDERED AS PERMANENT MOUNT, IT IS EQUIPPED WITH MOUNTING FEET, EACH FEATURING FOUR RUBBER MOUNTING PADS, ITEMS #6. TWO OF THESE, ON EACH MOUNTING FEET, ARE TO BE REPLACE BY RUBBER MOUNTING PADS, ITEM #7.

ENCLOSED WITH THE LIGHTBAR IS A PERMANENT MOUNTING KIT, PART NUMBER 02-0311751-01.

MOUNTING KIT CONTAINS ALL THE HARDWARE NEEDED SUCH AS ITEMS #7, #9, #10 AND #11, TO COMPLETE PERMANENT MOUNTING INSTALLATION



BELOW MOUNTING SURFACE DOUBLE NUT EACH BOLT, ITEM #10, WITH ITEMS #9 AND #11.

IMPORTANT NOTE: TO DRILL IN MOUNTING SURFACE CLEARANCE HOLES TO FIT MACHINE SCREWS ITEM #10, PROCEED AS FOLLOWS:
 1. REMOVE THE TWO ITEMS #6 FROM MOUNTING FEET AND REPLACE WITH ITEMS #7. 2. POSITION LIGHTBAR WITH MOUNTING FEET ADJUSTED TO FIT MOUNTING SURFACE. 3. USE MOUNTING FEET AS TEMPLATE FOR HOLE LOCATIONS.

ADJUSTABLE LIGHTBAR MOUNTING FOOT.

MOUNTING CLAMP ADJUSTMENT SCREW TO FIT THE TINNEMAN NUT, ITEM #5. LOCATED ON THE ACTUATOR-LOCKING MEMBER PLATE, ITEM #4.

ITEM	DESCRIPTION	PART NUMBER
1	MOUNTING FOOT, USED FOR BOTH ADJUSTABLE AND PERMANENT MOUNTING STYLE.	06-181141-000
2	LOCKING MEMBER, LEFT SIDE.	07-240350-017
3	LOCKING MEMBER, RIGHT SIDE.	07-240369-017
4	ACTUATOR-LOCKING MEMBER PLATE.	07-240370-017
5	TINNEMAN NUT, 7593-5618-3B.	13-046621-100
6	RUBBER MOUNTING PAD, USED FOR BOTH ADJUSTABLE AND PERMANENT MOUNTING STYLE.	38-0220590-00
7	RUBBER MOUNTING PAD, USED FOR PERMANENT MOUNTING STYLE ONLY.	38-0220590-01
8	MOUNTING FOOT LOCKING SCREW, 14 x 3/4" HEX HEAD A-pt STEEL MACHINE SCREW	15-211536-122
9	1/4" INTERNAL TOOTH LOCK WASHER	16-1321560-02
10	1/4-20 x 2-1/2 INCHES PHILLIPS PAN HEAD MACHINE SCREW, USED FOR PERMANENT MOUNTING STYLE.	14-130216-400
11	1/4 INCH HEX NUT	13-130120-070
12	MOUNTING CLAMP 8 INCH LONG, STANDARD MOUNTING CLAMP 5-1/2 INCHES LONG, SPECIAL MOUNTING CLAMP 11-3/4 INCHES LONG, SPECIAL	02-0341190-00 02-0341195-00 02-0341191-00
13	MOUNTING CLAMP ADJUSTMENT SCREW, 5/16-18 x 3 INCHES LONG, ROUND HEAD MACHINE SCREW	14-146016-480
14	END CAP PLATE	07-741437-000C
15	6-32 x 1/2 INCH PHILLIPS PAN HEAD MACHINE SCREW	14-062216-083C