

# WHELEN<sup>®</sup>

ENGINEERING COMPANY INC.

Route 145, Winthrop Road,

Chester, Connecticut 06412

Phone: (860) 526-9504

Fax: (860) 526-4078

Internet: [www.whelen.com](http://www.whelen.com)

Sales e-mail: [autosale@whelen.com](mailto:autosale@whelen.com)

Canadian Sales e-mail: [autocan@whelen.com](mailto:autocan@whelen.com)

Customer Service e-mail: [custserv@whelen.com](mailto:custserv@whelen.com)

## Installation Guide Model RB6D Beacon

### Safety First

This document provides all the necessary information to allow your Whelen product to be properly and safely installed. Before beginning the installation and/or operation of your new product, the installation technician and operator must read this manual completely. Important information is contained herein that could prevent serious injury or damage.

- **Proper installation of this product requires the installer to have a good understanding of automotive electronics, systems and procedures.**
- **If mounting this product requires drilling holes, the installer MUST be sure that no vehicle components or other vital parts could be damaged by the drilling process. Check both sides of the mounting surface before drilling begins. Also de-burr the holes and remove any metal shards or remnants. Install grommets into all wire passage holes.**
- **If this product is mounted with tape or Velcro™, clean the mounting surface with a 50/50 mix of isopropyl alcohol and water and dry thoroughly.**
- **Do not install this product or route any wires in the deployment area of your air bag. Equipment mounted or located in the air bag deployment area will damage or reduce the effectiveness of the air bag, or become a projectile that could cause serious personal injury or death. Refer to your vehicle owners manual for the air bag deployment area. The User/Installer assumes full responsibility to determine proper mounting location, based on providing ultimate safety to all passengers inside the vehicle.**
- **For this product to operate at optimum efficiency, a good electrical connection to chassis ground must be made. The recommended procedure requires the product ground wire to be connected directly to the NEGATIVE (-) battery post (this does not include products that use cigar power cords).**
- **If this product uses a remote device for activation or control, make sure that this device is located in an area that allows both the vehicle and the device to be operated safely in any driving condition.**
- **Do not attempt to activate or control this device in a hazardous driving situation.**
- **This product contains either strobe light(s), halogen light(s), high-intensity LEDs or a combination of these lights. Do not stare directly into these lights. Momentary blindness and/or eye damage could result.**
- **Use only soap and water to clean the outer lens. Use of other chemicals could result in premature lens cracking (crazing) and discoloration. Lenses in this condition have significantly reduced effectiveness and should be replaced immediately. Inspect and operate this product regularly to confirm its proper operation and mounting condition. Do not use a pressure washer to clean this product.**
- **It is recommended that these instructions be stored in a safe place and referred to when performing maintenance and/or reinstallation of this product.**
- **FAILURE TO FOLLOW THESE SAFETY PRECAUTIONS AND INSTRUCTIONS COULD RESULT IN DAMAGE TO THE PRODUCT OR VEHICLE AND/OR SERIOUS INJURY TO YOU AND YOUR PASSENGERS!**

## MOUNTING THE UNIT:

The RB6-Series has a universal base that may be mounted in one of two ways. These lights are designed to be mounted in a normal dome up position. If mounted in an inverted position, seal the wire exit hole and any mounting holes with silicone seal.

### 1 INCH N.P.T. PIPE MOUNT:

1. Feed your power wires through the pipe.
2. Connect the power wires to the wires from the light. RED to POSITIVE (+) BLACK to NEGATIVE (-).
3. Screw the strobe beacon onto the pipe, being careful not to pinch or strain the wires. *Hand tighten* the unit onto pipe.

### PERMANENT SURFACE MOUNT: (TAMPER RESISTANT)

**NOTE:** It will be necessary to remove the dome in order to use this mounting style. The illustration shows the reflector assembly removed to show where the mounting holes are located, but it is not necessary to remove it for this operation.

1. Remove the clamp ring fastening the dome to the base and remove the dome.
2. With an appropriately sized drill, open the three mounting holes located around the inside perimeter of the base. Be sure to remove any shavings caused by this operation.
3. Using the base as a template, mark the location of the three mounting holes and wire access hole onto the mounting surface.
4. Inside the bottom of the base you will find 3 indentations where the mounting holes should be drilled. Drill the starter holes for the mounting screws with an appropriately sized drill. **NOTE:** Be very careful choosing a drill bit for these holes as the mounting screws must thread into them to hold the beacon onto the mounting surface. Drill the wire access hole with a 1/4 inch drill. Deburr all holes and it is recommended that you install a rubber grommet (customer supplied) to protect the wires.
5. Feed the wires through the wire access hole in the mounting gasket, and the mounting surface.
6. Align the mounting holes in the base, gasket, and mounting surface. Fasten with the three sheet metal screws.
7. Connect the wires from the beacon to your power wires. RED to POSITIVE (+) BLACK to NEGATIVE (-).

### WARNING: THIS UNIT IS POLARITY SENSITIVE.

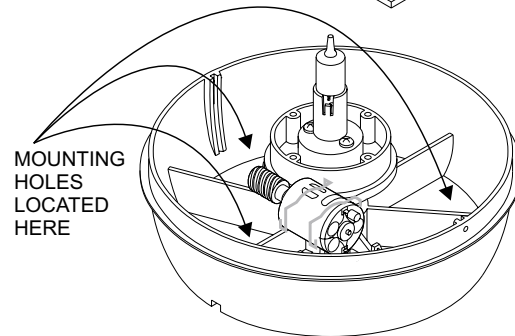
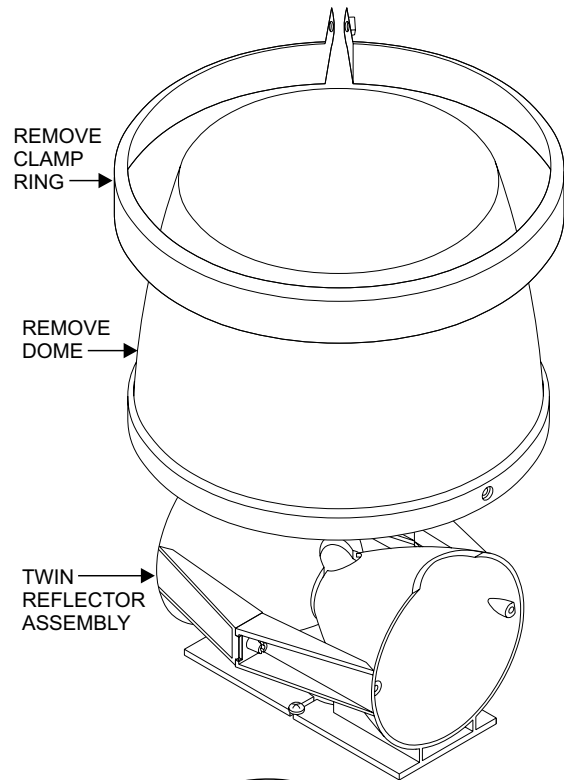
When installing please note:

RED or WHITE wire = POSITIVE (+)  
BLACK wire NEGATIVE (-)

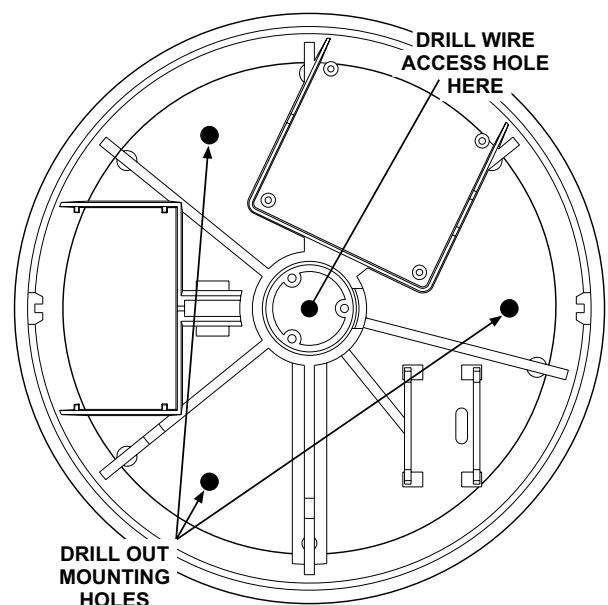
**Note: On Positive Ground Vehicles Red or White goes to chassis. Fuse the positive wire with an appropriate fuse.**

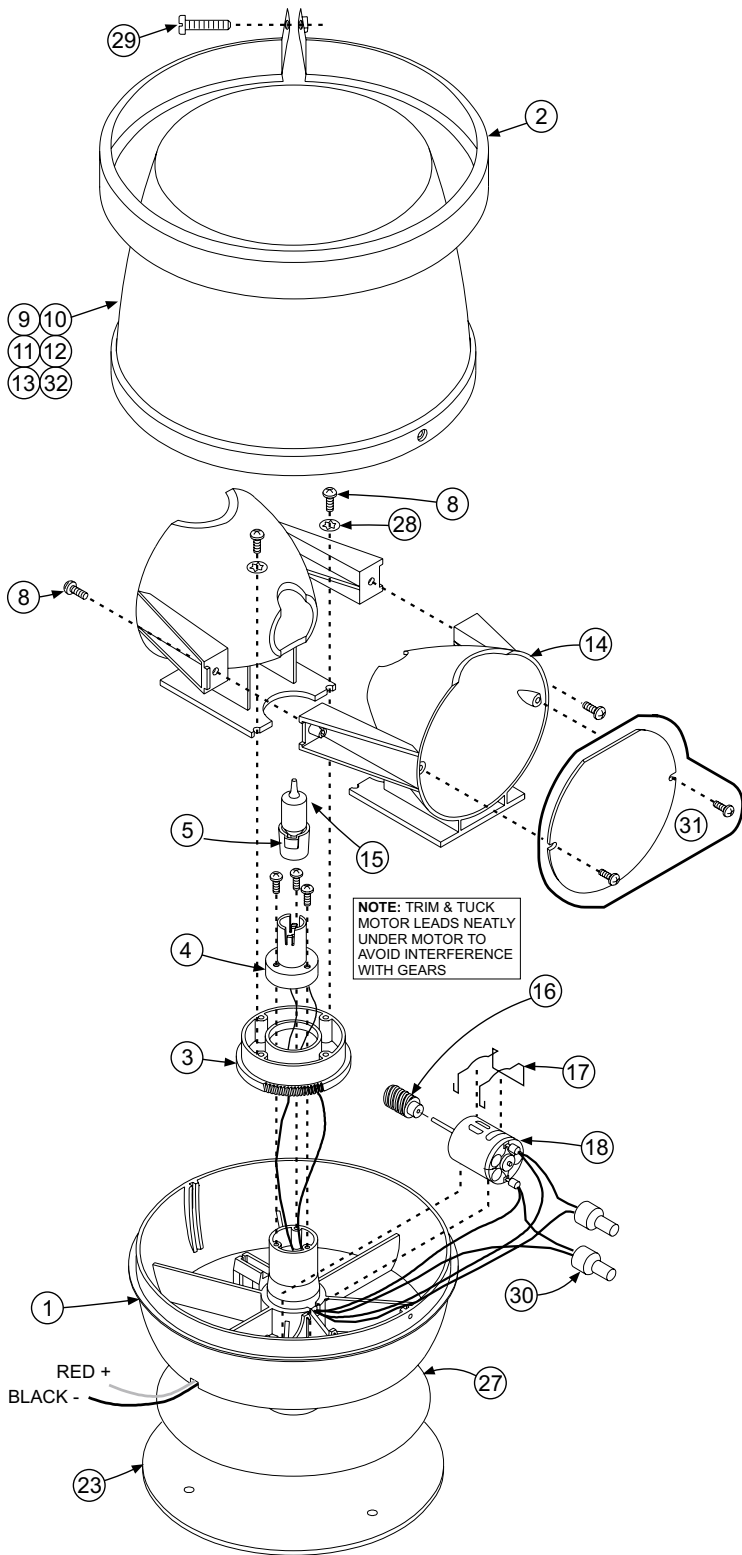
A *magnet mount* or *mirror mount* can be purchased separately (see parts list).

**The outer surfaces of this product may be cleaned with mild soap and water. Use of any other chemicals may void product warranty. Do not use a pressure washer.**



### TOP VIEW INSIDE BOTTOM OF BASE





QTY.	ITEM	PART NUMBER	DESCRIPTION
-	-	01-0681696-( )	RB6D FINAL ASSEMBLY
1	1	11-381574-000	HOUSING BASE
1	2	19-261465-000	CLAMP RING
1	3	27-0961376-00	WORM WHEEL GEAR
1	4	33-0042444-00	HALOGEN LAMP HOLDER ASSEMBLY
1	5		LAMP ASSEMBLY (* See below)
4	8	15-065419-070	#6 X 7/16" PHILLIPS PAN HEAD PLASTI-LOK
-	9	68-4161381-10	LENS / AMBER
-	10	68-4161381-20	LENS / BLUE
-	11	68-4161381-30	LENS / CLEAR
-	12	68-4161381-40	LENS / GREEN
-	13	68-4161381-50	LENS / RED
2	14	68-5981499-01	360° TWIN REFLECTOR
3	15	15-045410-060	#4 X 3/8" PHILLIPS PAN HEAD PLASTI-LOK
1	16	27-0841396-00	WORM GEAR
1	17	19-141398-000	RETAINER BAIL STRAP
1	18	27-0261495-02	MOTOR ASSEMBLY / 12 VOLTS
1	21	10-0521396-00	LABEL / MODEL NUMBER
1	22	10-0320776-00	LABEL / USA FLAG
-	23	38-0241504-00	GASKET
-	24	01-2861506-00	MAGNET MOUNT KIT
-	25	01-2861522-00	MIRROR MOUNT KIT
-	26	15-101416-100	#10 X 5/8" PHILLIPS PAN HEAD SHT. MTL. SCREW
1	27	38-0141549-00	BASE DECAL
2	28	16-0621020-32	#6 INTERNAL TOOTH LOCKWASHER / STAINLESS
1	29	15-101416-120	SCREW, #10 X 3/4" PPHSMS TYPE A
2	30	25-0910223-03	BUTT TERMINAL / #NP5115 / 22-14 (12V model)
-	31	01-0461560-( )	LENS FILTER KIT
-	32	68-4161381-V0	LENS / VIOLET

\* LAMP ASSEMBLY: You will find the replacement number of your lamp assembly stamped into the side of the lamp base.

**WARNING:** All customer supplied wires that connect to the positive (+) terminal of the battery must be sized to supply at least 125% of the maximum operating current and fused at the battery to carry that load.

**IMPORTANT:** DO NOT INSTALL BULBS EXCEEDING 50 WATTS.

