

WHELEN[®]

ENGINEERING COMPANY INC.

Route 145, Winthrop Road,
Chester, Connecticut 06412

Phone: (860) 526-9504

Fax: (860) 526-4078

Internet: www.whelen.com

Sales e-mail: autosale@whelen.com

Canadian Sales e-mail: autocan@whelen.com

Customer Service e-mail: custserv@whelen.com

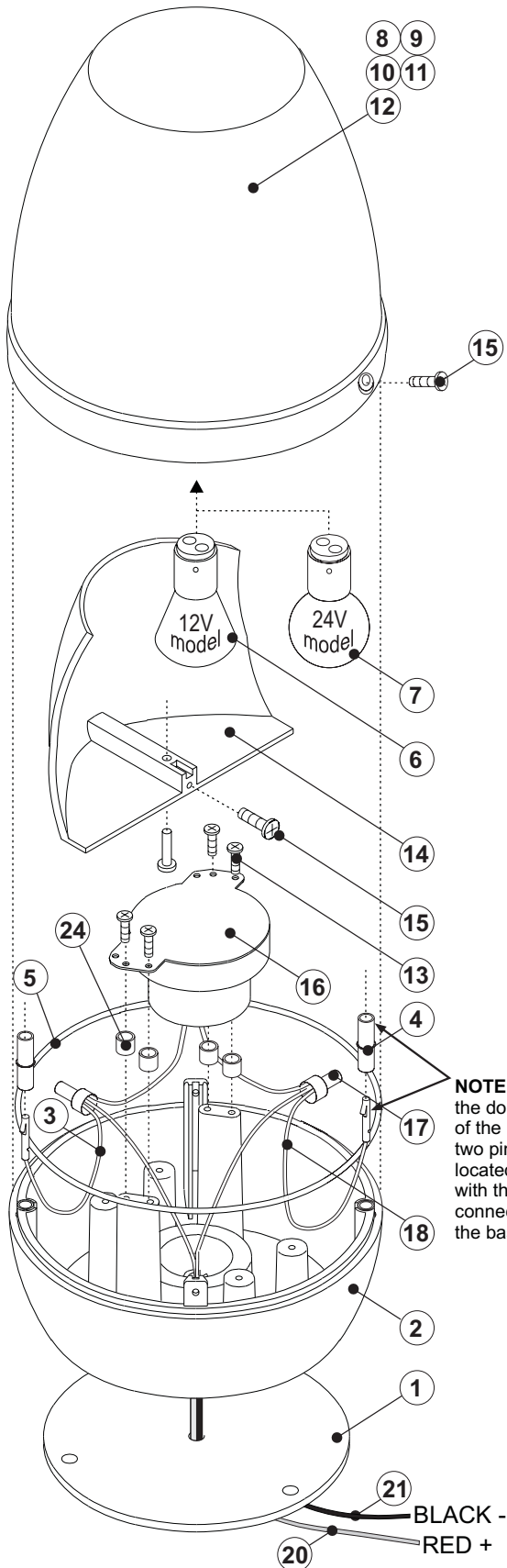
Installation Guide: Rota-Beam™ Rotating Beacon Model(s) RB2012I / RB2024I

Safety First

This document provides all the necessary information to allow your Whelen product to be properly and safely installed. Before beginning the installation and/or operation of your new product, the installation technician and operator must read this manual completely. Important information is contained herein that could prevent serious injury or damage.

- **Proper installation of this product requires the installer to have a good understanding of automotive electronics, systems and procedures.**
- **If mounting this product requires drilling holes, the installer MUST be sure that no vehicle components or other vital parts could be damaged by the drilling process. Check both sides of the mounting surface before drilling begins. Also de-burr the holes and remove any metal shards or remnants. Install grommets into all wire passage holes.**
- **If this manual states that this product may be mounted with suction cups, magnets, tape or Velcro™, clean the mounting surface with a 50/50 mix of isopropyl alcohol and water and dry thoroughly.**
- **Do not install this product or route any wires in the deployment area of your air bag. Equipment mounted or located in the air bag deployment area will damage or reduce the effectiveness of the air bag, or become a projectile that could cause serious personal injury or death. Refer to your vehicle owners manual for the air bag deployment area. The User/Installer assumes full responsibility to determine proper mounting location, based on providing ultimate safety to all passengers inside the vehicle.**
- **For this product to operate at optimum efficiency, a good electrical connection to chassis ground must be made. The recommended procedure requires the product ground wire to be connected directly to the NEGATIVE (-) battery post (this does not include products that use cigar power cords).**
- **If this product uses a remote device for activation or control, make sure that this device is located in an area that allows both the vehicle and the device to be operated safely in any driving condition.**
- **Do not attempt to activate or control this device in a hazardous driving situation.**
- **This product contains either strobe light(s), halogen light(s), high-intensity LEDs or a combination of these lights. Do not stare directly into these lights. Momentary blindness and/or eye damage could result.**
- **Use only soap and water to clean the outer lens. Use of other chemicals could result in premature lens cracking (crazing) and discoloration. Lenses in this condition have significantly reduced effectiveness and should be replaced immediately. Inspect and operate this product regularly to confirm its proper operation and mounting condition. Do not use a pressure washer to clean this product.**
- **It is recommended that these instructions be stored in a safe place and referred to when performing maintenance and/or reinstallation of this product.**
- **FAILURE TO FOLLOW THESE SAFETY PRECAUTIONS AND INSTRUCTIONS COULD RESULT IN DAMAGE TO THE PRODUCT OR VEHICLE AND/OR SERIOUS INJURY TO YOU AND YOUR PASSENGERS!**

For warranty information regarding this product, visit www.whelen.com/warranty



QTY.	QTY.	ITEM	PART NUMBER	DESCRIPTION
	*		01-0681407-()	RB2012I FINAL ASSEMBLY.
*			01-0681557-()	RB2024I FINAL ASSEMBLY
1	1	1	38-0241332-00	GASKET
1	1	2	11-381404-000	BASE / HOUSING
1	1	3	67-1021800050	18 GA. BLACK WIRE W/SOCKET ONE END
2	2	4	39-0401323-04	AMP SOCKET HOUSING
1	1	5	38-0441331-00	"O" RING
-	1	6	34-0412050-44	12V / 35W / 50 CANDELLA LAMP / G.E. #1196
1	-	7	34-0428050-6B	28 VDC D.C. BAYONET SYLVANIA S-11 #312
A/R	A/R	8	02-0281402-10	LENS / AMBER
A/R	A/R	9	02-0281402-20	LENS / BLUE
A/R	A/R	10	02-0281402-30	LENS / CLEAR
A/R	A/R	11	02-0281402-40	LENS / GREEN
A/R	A/R	12	02-0281402-50	LENS / RED
4	4	13	15-041416-100	#4 X 5/8" P.P.H. SHEET METAL SCREW
3	1	14	68-5961338-01	REFLECTOR
3	3	15	15-065419-080	#6 X 1/2" PPH PLASTISCREW
1	-	16	27-0241334-02	24 VDC GEAR MOTOR
-	1	16	27-0241334-01	12 V.D.C. GEAR MOTOR
2	2	17	25-0910223-03	BUTT TERMINAL
1	1	18	67-1021822050	18 GA. WIRE RED W/SOCKET ONE END
1	1	20	67-1011822120	RED WIRE LEAD - #18 GA. 12" LG.
1	1	21	67-1011800120	BLACK WIRE LEAD - #18 GA. 12" LG.
A/R	-	22	01-2861390-00	MAGNET MOUNT KIT / 12 VDC MODEL
3	3	23	15-101416-100	#10 X 5/8" P.P.H. SHEET METAL SCREW
4	4	24	20-0806049300	SPACER - 1/4" L - 3/16" ROUND

WARNING! All customer supplied wires that connect to the positive terminal of the battery must be sized to supply at least 125% of the maximum operating current and FUSED at the battery to carry that load. **DO NOT USE CIRCUIT BREAKERS WITH THIS PRODUCT!**

CAUTION: Some mounting options for this beacon will require drilling. It is absolutely necessary to make sure that no other vehicle components could be damaged in the process. Check both sides of the mounting surface before starting and if damage is possible, select another mounting location.

NOTE: While attaching the dome to the base of the unit, line up the two pin connectors located inside the dome, with the two socket connectors located on the base.

The outer surfaces of this product may be cleaned with mild soap and water. Use of any other chemicals may void product warranty. Do not use a pressure washer.

MOUNTING THE UNIT:

The RB II Series has a universal base that may be mounted in one of two fashions. These lights are designed to be mounted in a normal dome up position. If mounted in an inverted position, seal the wire exit hole and any mounting holes with silicone seal.

1 INCH N.P.T. PIPE MOUNT:

1. Feed the power wires through the pipe.
2. Connect the power wires to the wires from the light (see *Wiring Instructions*).
3. Screw the strobe beacon onto the pipe, being careful not to pinch or strain the wires. *Hand tighten* the unit onto pipe.

PERMANENT SURFACE MOUNT: (TAMPER RESISTANT)

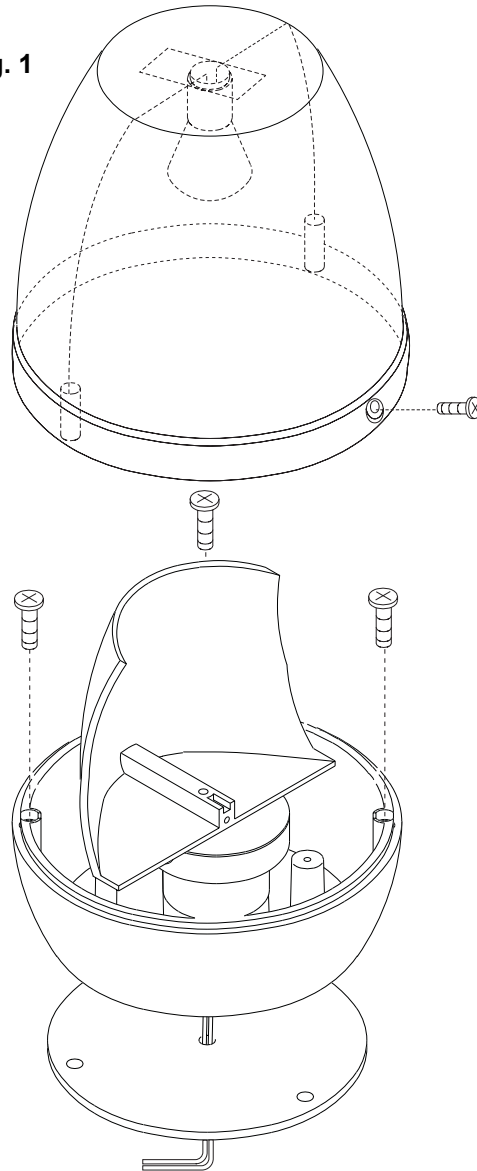
NOTE: It will be necessary to remove the dome in order to use this mounting style (Fig. 1).

1. Remove the two screws fastening the dome to the base.
2. Remove dome and unplug the wires from the two connectors. Be careful not to damage or lose the dome gasket.
3. With an appropriately sized drill, open the three mounting holes located around the inside perimeter of the base. (Fig.2) Be sure to remove any shavings caused by this operation.
4. Using the base as a template, mark the location of the three mounting holes and the wire access hole onto the mounting surface.
5. Drill the starter holes for the mounting screws with an appropriately sized drill. **NOTE:** Keep in mind when choosing a drill bit for this step, that mounting screws must thread into these holes to hold the beacon onto the car. Drill the wire access hole with a 1/4 inch drill. Deburr all holes and install a rubber grommet (customer supplied) to protect the wires.
6. Feed the wires through the wire access hole in the mounting gasket, and the mounting surface.
7. Align the mounting holes in the base, gasket, and mounting surface. Fasten with the three sheet metal screws.
8. Connect the wires from the beacon to the power wires (see *Wiring Instructions*).
9. Re-connect the wires from the dome and replace the dome making sure that the dome gasket is in place. Fasten the dome to the base with the two screws that fasten the dome to the base.

WIRING: 12 and 24 Volt Models

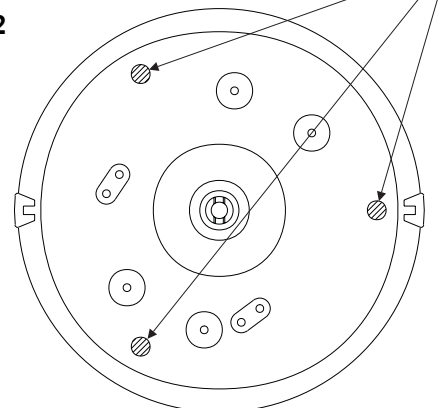
1. Connect the RED wire from the beacon to the POSITIVE (+) power wire. A 5 amp fuse should be installed in the positive power wire as close to the power source as possible.
2. Connect the BLACK wire from the beacon to the NEGATIVE (-) power wire.
3. Use 18 AWG wire or larger for all wiring.

Fig. 1



Top view of base showing the three permanent mounting holes. (Only one of these holes will be used when installing Magnet Mount Kit.)

Fig. 2



MAGNETIC MOUNT:

WARNING: The use of any magnetically mounted warning beacon on the outside of a vehicle while in motion is not recommended and is at the sole discretion and risk of the user. It is necessary to disassemble the strobe light head assembly in order to properly install the optional magnetic mount kit.

1. Remove the two screws fastening the dome to the beacon's base.
2. Remove the dome. Take precautions not to damage or loose the dome gasket.
3. With a 7/32 inch drill, open one of the holes located inside the perimeter of the base to be used as entrance for the cord of the cigar lighter plug assembly (See Fig. 2).
4. From Below the base, insert the cord of the cigar plug assembly through the hole from step 3. Inside the base tie a knot in the cord 3 inches from the end for strain relief.
5. Strip both the wire ends on the cord 1/4 inch.
6. Pull the RED and BLACK wires protruding through the bottom of the base, inside the base. Crimp with the supplied butt terminals: the smooth wire of the cord to the BLACK wire of the beacon and the RIBBED wire of the cord to the RED wire of the beacon (See Fig. 3).
7. Replace the dome making sure the gasket is in place. Fasten the dome to the base using the screws removed in step 1.
8. Fasten the magnet to the bottom of the base by using the internal tooth lockwasher and the hex head "A" point sheet metal screw.

GENERAL RECOMMENDATIONS:

A. The outer surfaces of the strobe light may be cleaned with glass cleaner. Do not use abrasive or oil based cleaners as they may dull the lens surface, resulting in reduced light output. Do not use a pressure washer! Use only identical replacement parts. Substitute parts may cause personal injury or damage to the light.

TROUBLE SHOOTING:

A. Nothing Works

1. Check any circuit breaker or fuse in the power wires.

B. Lamp does not light.

1. Check that the wires from the dome are plugged into the internal harness.
2. Check that the lamp is firmly plugged into the socket.
3. Check for burned out lamp.

C. Reflector does not turn.

1. Check set screw holding reflector to motor shaft for tightness.
2. Check that motor wires are firmly crimped to internal harness.
3. Replace motor if defective.

Fig. 3

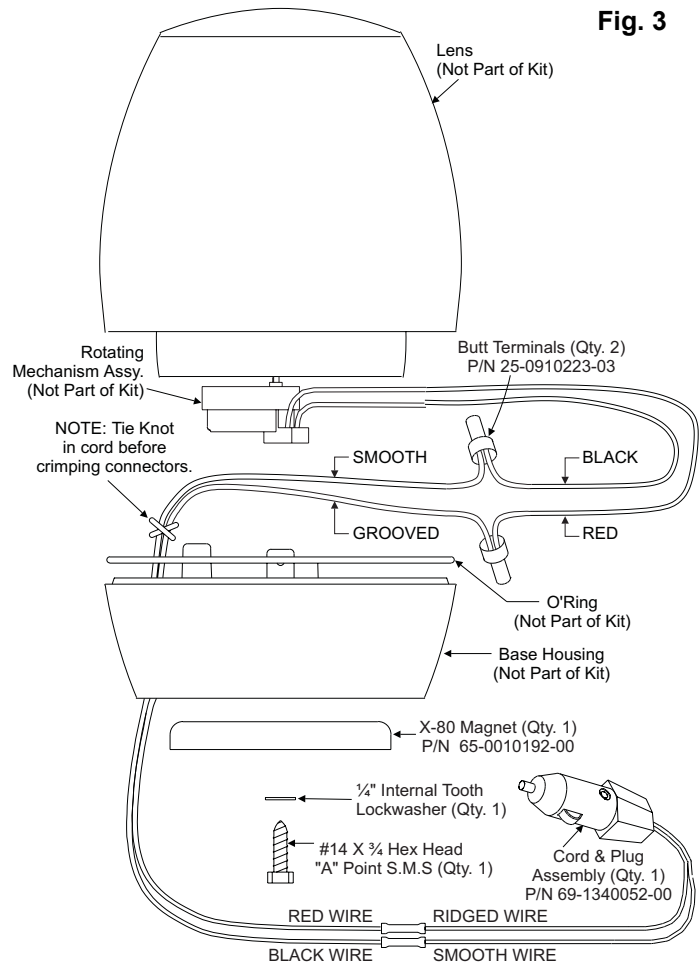


Fig. 4

