

WHELEN[®]

ENGINEERING COMPANY INC.

Route 145, Winthrop Road,

Chester, Connecticut 06412

Phone: (860) 526-9504

Fax: (860) 526-4078

Internet: www.whelen.com

Sales e-mail: autosale@whelen.com

Canadian Sales e-mail: autocan@whelen.com

Customer Service e-mail: custserv@whelen.com

Installation Guide KKK E-Specification Power Supply

Safety First

This document provides all the necessary information to allow your Whelen product to be properly and safely installed. Before beginning the installation and/or operation of your new product, the installation technician and operator must read this manual completely. Important information is contained herein that could prevent serious injury or damage.

- **Proper installation of this product requires the installer to have a good understanding of automotive electronics, systems and procedures.**
- **If mounting this product requires drilling holes, the installer MUST be sure that no vehicle components or other vital parts could be damaged by the drilling process. Check both sides of the mounting surface before drilling begins. Also de-burr any holes and remove any metal shards or remnants. Install grommets into all wire passage holes.**
- **If this product is mounted with tape or Velcro™, clean the mounting surface with a 50/50 mix of isopropyl alcohol and water and dry thoroughly.**
- **Do not install this product or route any wires in the deployment area of your air bag. Equipment mounted or located in the air bag deployment area will damage or reduce the effectiveness of the air bag, or become a projectile that could cause serious personal injury or death. Refer to your vehicle owners manual for the air bag deployment area. The User/Installer assumes full responsibility to determine proper mounting location, based on providing ultimate safety to all passengers inside the vehicle.**
- **For this product to operate at optimum efficiency, a good electrical connection to chassis ground must be made. The recommended procedure requires the product ground wire to be connected directly to the NEGATIVE (-) battery post.**
- **If this product uses a remote device to activate or control this product, make sure that this control is located in an area that allows both the vehicle and the control to be operated safely in any driving condition.**
- **Do not attempt to activate or control this device in a hazardous driving situation.**
- **It is recommended that these instructions be stored in a safe place and referred to when performing maintenance and/or reinstallation of this product.**
- **FAILURE TO FOLLOW THESE SAFETY PRECAUTIONS AND INSTRUCTIONS COULD RESULT IN DAMAGE TO THE PRODUCT OR VEHICLE AND/OR SERIOUS INJURY TO YOU AND YOUR PASSENGERS!**

MOUNTING THE KKKEPS POWER SUPPLY

- THE KKKEPS SHOULD BE MOUNTED ON A METAL SURFACE TO AID HEAT DISSIPATION. BE SURE THAT THIS SURFACE IS NOT ONE THAT EITHER GENERATES OR IS EXPOSED TO EXCESSIVE HEAT DURING NORMAL OPERATION OF THE VEHICLE.
- DO NOT SELECT A LOCATION WHERE THE KKKEPS WILL BE EXPOSED TO POTENTIAL DAMAGE FROM ANY UNSECURED OR LOOSE EQUIPMENT IN THE VEHICLE.
- BE SURE THAT THE KKKEPS VENTILATION OPENINGS ARE UNOBSTRUCTED. MAINTAIN A DISTANCE OF AT LEAST 2" (TWO INCHES) BETWEEN THESE OPENINGS AND ANY SURFACE.
- BE SURE THE AREA SELECTED WILL NOT ALLOW THE KKKEPS TO BE EXPOSED TO WATER. *THE KKKEPS IS NOT WATERPROOF!*
- THE TWO POWER SUPPLIES MUST BE MOUNTED BESIDE EACH OTHER.
- WHEN ROUTING THE KKKEPS'S WIRES, IT IS IMPORTANT TO CHOOSE A PATH THAT WILL KEEP THESE WIRES AWAY FROM EXCESSIVE HEAT AND FROM ANY VEHICLE EQUIPMENT THAT COULD COMPROMISE THE INTEGRITY OF THE WIRES (EX. COMPARTMENT DOORS, UN-GROMMETED HOLES, ETC.).
- WHEN THE BEST MOUNTING LOCATION HAS BEEN DETERMINED, SECURELY FASTEN THE KKKEPS TO IT'S MOUNTING SURFACE USING #10 SHEET METAL SCREWS.

WIRING THE KKKEPS POWER SUPPLY

- USING 8 GAUGE WIRE, CONNECT THE POSITIVE (+) TERMINAL OF POWER SUPPLY "A" TO +12 VDC. FUSE AT 30 AMPS.
- USING 8 GAUGE WIRE, CONNECT THE POSITIVE (+) TERMINAL OF POWER SUPPLY "B" TO +12 VDC. FUSE AT 30 AMPS.
- USING 8 GAUGE WIRE, CONNECT THE GROUND (GND) TERMINAL OF POWER SUPPLY "A" TO CHASSIS GROUND/GROUND BUS.
- USING 8 GAUGE WIRE, CONNECT THE GROUND (GND) TERMINAL OF POWER SUPPLY "B" TO CHASSIS GROUND/GROUND BUS.

WIRING THE STROBE LIGHTHEADS

- CUT THE STROBE LIGHTHEAD CABLES TO THEIR NECESSARY LENGTHS.

- INSTALL THE SOCKET-TYPE TERMINALS ON THE LIGHTHEAD END OF THE STROBE CABLES. NOTE: THE SHIELD DRAIN WIRE (NON-INSULATED) IS NOT USED AT THIS END AND MAY BE TRIMMED FLUSH WITH THE HARNESS JACKET.
- INSTALL THE PIN-TYPE TERMINALS ON THE POWER SUPPLY END OF THE STROBE CABLES. NOTE: THE SHIELD DRAIN WIRE (NON-INSULATED) WILL BE GROUNDED TO THE POWER SUPPLY MOUNTING SCREW ADJACENT TO THE STROBE OUTLETS.
- INSERT THE SOCKET-TYPE TERMINALS INTO THE CONNECTORS DESIGNED TO PLUG INTO THE STROBE LIGHTHEAD AS FOLLOWS:

Pos. 1 - RED wire

Pos. 2 - BLACK wire

Pos. 3 - WHITE wire

- INSERT THE PIN-TYPE TERMINALS INTO THE CONNECTORS DESIGNED TO PLUG INTO THE POWER SUPPLY'S STROBE OUTLET AS FOLLOWS:

Pos. 1 - RED wire

Pos. 2 - BLACK wire

Pos. 3 - WHITE wire

- ROUTE THE STROBE CABLES FROM THE POWER SUPPLY STROBE OUTLET TO THAT OUTLET'S DESIGNATED LIGHTHEAD. INSERT CONNECTOR INTO LIGHTHEAD PLUG. REFER TO PAGE 2 FOR LIGHTHEAD DESIGNATION CHART.
- PLUG THE OPPOSITE END INTO ITS DESIGNATED STROBE OUTLET. GROUND THE SHIELD DRAIN WIRE TO THE NEAREST POWER SUPPLY MOUNTING SCREW.
- REPEAT FOR ALL REMAINING STROBE CABLES.

CONTROL HARNESS CONNECTIONS

- REFER TO WIRING SCHEMATIC.

STROBE OUTLET DESIGNATIONS

- REFER TO WIRING SCHEMATIC.

SWITCH CONNECTIONS

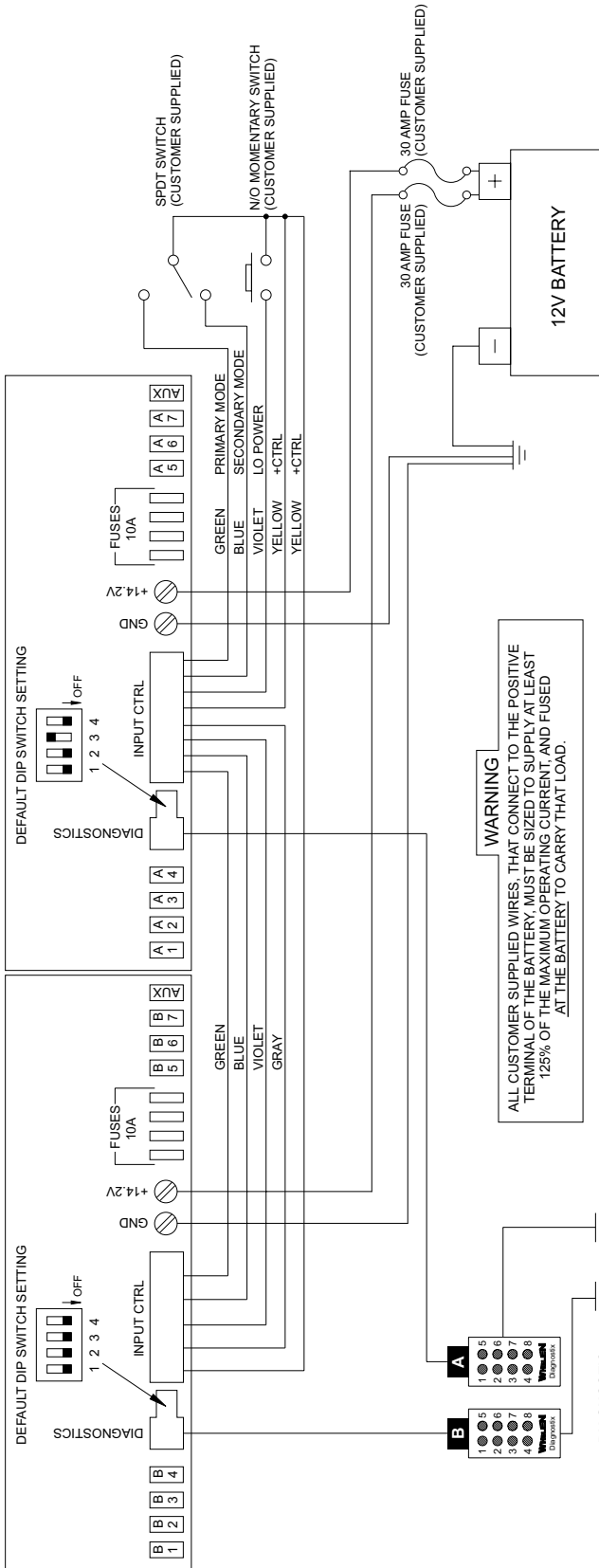
- REFER TO WIRING SCHEMATIC.

DIP SWITCH FUNCTIONALITY

- REFER TO DIP SWITCH CONFIGURATION TABLE.

POWER SUPPLY A

POWER SUPPLY B

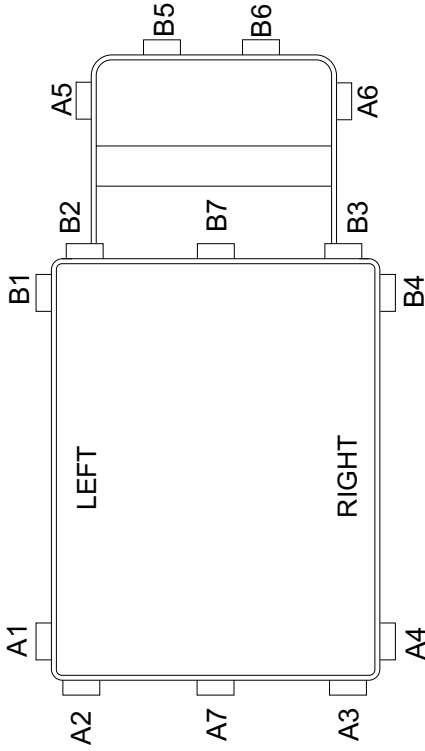


DIP SWITCH CONFIGURATION

1	2	3	4	TYPE	FUNCTION
OFF	OFF	X	X	COMET FLASH	
ON	OFF	X	X	TRIPLE FLASH	
OFF	ON	X	X	FLASH PATTERN	
ON	ON	X	X	DOUBLE FLASH	
				ACTION FLASH	
X	X	ON	X	CENTER CTRL	ENABLE IN PRIMARY MODE DISABLED IN PRIMARY MODE
X	X	X	ON	AUX CTRL	ENABLE AUX OUTLET DISABLE AUX OUTLET

SPECIFICATIONS

INPUT VOLTAGE - 10 to 16 VOLTS (TYP.)
 INPUT CURRENT - 40 AMPS @ 14.2 VDC (14 Lamps)
 FLASH RATE - 75 FPM
 OUTPUT POWER - 31 WATTS (PER LAMP)



LIGHT POSITIONS

INDICATES POWER SUPPLY
 INDICATES POSITION NUMBER

