

ROUTE 145, WINTHROP ROAD
 CHESTER, CONNECTICUT 06412-0684
 TELEPHONE: (860) 526-9504
 FAX: (860) 526-4078

INSTALLATION OF NITEBEAM H.I.D. FLOODLIGHT...

The Nitebeam Floodlight carries a high intensity discharge lamp. Therefore it is essential that the operator pay close attention to all warnings and cautions listed in this manual.

PERMANENT MOUNTING

When selecting the mounting location for the Nitebeam, be sure to check that no vehicle components will interfere with the mounting location of this unit. Position the Nitebeam on the proposed mounting location. Using the bail strap as a template, scribe the mounting surface with an awl or other suitable tool to indicate where the mounting holes are to be drilled. (Ref. Figure 2, Mounting Dimensions)

CAUTION: As the installation of the Nitebeam will require drilling, it is absolutely necessary to make sure that no other vehicle components could be damaged in the process. Check both sides of the mounting surface before drilling and if damage is possible, select a different mounting location.

Carefully drill the mounting holes in the areas scribed. The diameter of these holes will be determined by the size of the mounting hardware and the thickness of the

mounting surface. Secure the unit with customer provided sheet metal screws. (Ref. Figure 1)

PORTABLE MOUNTING (OPTIONAL)

Secure the suction cup to the Nitebeam bail strap using the metric nut provided with the kit. When selecting the mounting location, be sure to look for a flat, smooth surface. Place the Nitebeam on the proposed mounting location with the suction cup firmly in place on the mounting surface. Insert the suction engagement handle into the suction cup as noted in Figure 1A, and push down on the handle to secure the unit to the vehicle.

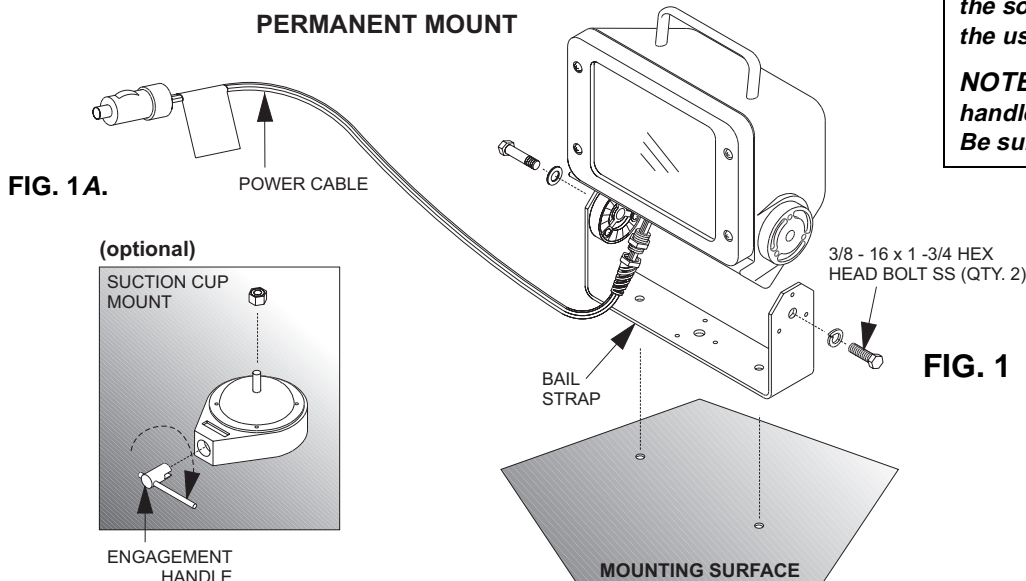
WIRING (OPTION)

The Nitebeam is wired to a cigar plug where the grooved wire is (+) positive and the smooth wire is (-) negative. If the user chooses to wire this unit permanently into a vehicle; **NOTE: all customer supplied wires, that connect to the positive terminal of the battery must be sized to supply at least 125% of the maximum operating current, and fused at the battery to carry the load.** (Refer to the Electrical Specification box on page 2 of this manual.)

WARNING: The use of any suction cup mounted units on a vehicle while it is in motion is at the sole discretion and risk of the user.

NOTE: The suction engagement handle is a loosely shipped item. Be sure not to lose this item.

The outer surfaces of this product may be cleaned with mild soap and water. Use of any other chemicals may void product warranty. Do not use a pressure washer.



IMPORTANT!!

ABOUT THE NITEBEAM LAMP...

The 70 Watt Metal Halide Bulbs have an average life rating of 10,000 hours. The Nitebeam reaches its maximum "burn level" or brightest beam level when set to a ± 45 degree angle. The metal halide arc-tubes operate at high pressure (up to 50 p.s.i.) and at very high temperatures. Due to the nature of its attributes, the halide arc-tube can unexpectedly rupture because of internal or external factors such as a ballast failure or misapplication. An arc-tube rupture can result in the discharge of extremely hot quartz particles (as high as 1832° F, 1000° C). In the event of such a rupture there is a risk of personal injury, property damage, burns and fire. Therefore, unless the bulb is being replaced, it should remain within the housing and behind the protective ultraviolet lens.

SAFETY FIRST...

Do not tamper with the safety features installed in the Nitebeam. This lamp can cause serious skin burn and eye inflammation from shortwave ultraviolet radiation. It MUST be operated in an enclosed fixture which filters out the radiation. The Nitebeam is provided with a "deadman's" switch that prevents the bulb from functioning unless the protective lens is in place. If the protective ultraviolet lens cover is removed, the power will be terminated automatically.

BULB REPLACEMENT...

When replacing the bulb do not remove or insert lamp while the power is on. In order to prevent electrical shock and burn hazards, allow the lamp to cool for at least five minutes before removing. Do not remove lamp from package until ready for use and then handle only with clean cotton gloves. The oil from fingerprints causes hot spots on the lamp that may cause whitish spotting and premature lamp failure. If lamp is handled, fingerprints, grease or oils may be removed from the bulb by washing with alcohol. Dry lamp carefully with cotton or clean cloth.

OPERATION NOTES...

Proper care and maintenance will reduce the possibility of an arc-tube rupture and premature lamp failure:

- Operate only with the Nitebeam unit to prevent ballast failure.
- Turn lamp off at least once a week for a minimum of fifteen minutes.
- Do not expose operating lamp to moisture.
- Replace lamp if bulb is scratched, cracked or damaged in any way.

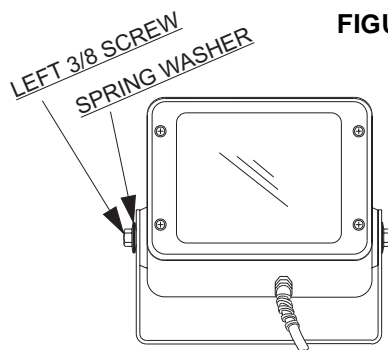


FIGURE 2.

FEATURE: To enable floodlight unit to ratchet freely, loosen the left 3/8" screw until resistance is applicable for rotation. (see Figure 2)

ELECTRICAL SPECIFICATIONS

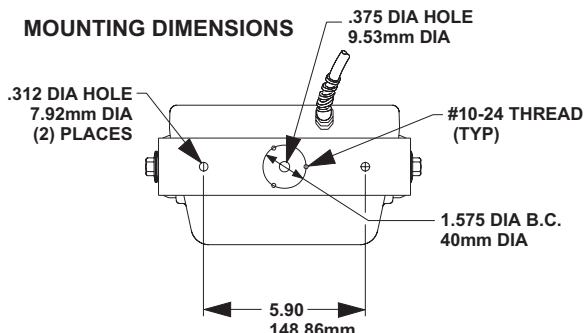
THE 12 VDC VERSION:

Input Voltage ----- 12 VDC $\pm 20\%$
Current Draw ---- 7 AMP @ 12 VDC
Power Output ----- 70 Watts
Voltage Trip Low ----- 9 VDC $\pm 5\%$
Voltage Trip High ----- 18 VDC $\pm 5\%$

THE 24 VDC VERSION:

Input Voltage ----- 24 VDC $\pm 20\%$
Current Draw - 3.5 AMP @ 24 VDC
Power Output ----- 70 watts
Voltage Trip Low ----- 18 VDC $\pm 5\%$
Voltage Trip High ----- 32 VDC $\pm 5\%$

MOUNTING DIMENSIONS



REPLACEMENT PARTS LIST

Suction Cup Mount (Kit)	01-0416591-00
H.I.D. 70 Watt Lamp	34-1816623-4E
3/8-16 x 1-3/4 Hex Head Bolt SS	14-156436-280
3/8 Split Lock Washer SS	16-1532220-10
Ball Strap Bracket	07-262718-010
3/8 Wave Washer	16-1552420-20
Lens Seal	38-0142464-00
Glass Lens	68-3642464-00
#10-24 x 3/4 PPHMS SS	14-104216-120