

ROUTE 145, WINTHROP ROAD
CHESTER, CONNECTICUT 06412-0684
TELEPHONE: (860) 526-9504
FAX: (860) 526-4078

California -compliant siren tone conversion will enable 49-state WS295HFS2-series to produce tones in accordance with Title 13. WS295HFS3-series and 4-series control heads must be returned to the factory for this conversion.

Installation Procedures . . .

1. Remove the plastic cover from the control head and slide the chassis out.
2. Locate the IC chip shown in the illustration. Be sure to note the location of small alignment dot at one corner of this chip. Gently pry the old chip up and out of the socket holder.

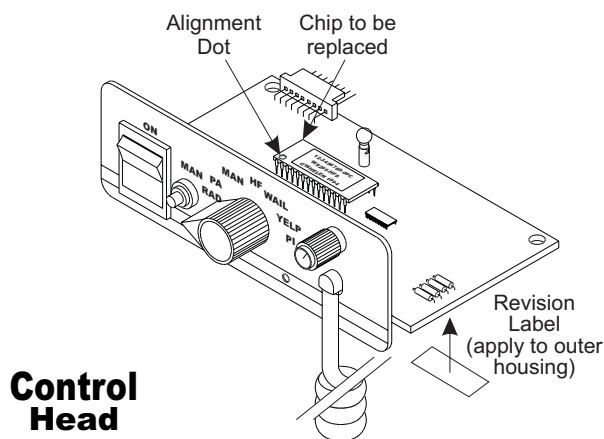
Note:

You should use an IC inserter/extractor to remove and install the chip. They can usually be found at your local electronic parts store.

3. Check alignment of the chip legs, straighten as required.

4. Position the chip above the socket holder, insuring the "alignment dot" is in the proper location. Line up the legs with the socket holes, then gently press the chip into the socket using the inserter/extractor.
5. Re-assemble the unit and apply the included revision label to the underside of the housing.
6. Repeat this chip removal/replacement procedure for the remote amplifier. Be sure that the proper chip is being installed in its proper unit.

NOTE: *If your siren is not working properly after modification, contact Whelen Tech. Support by dialing 1-860-526-9504 then 6 and then 1.*

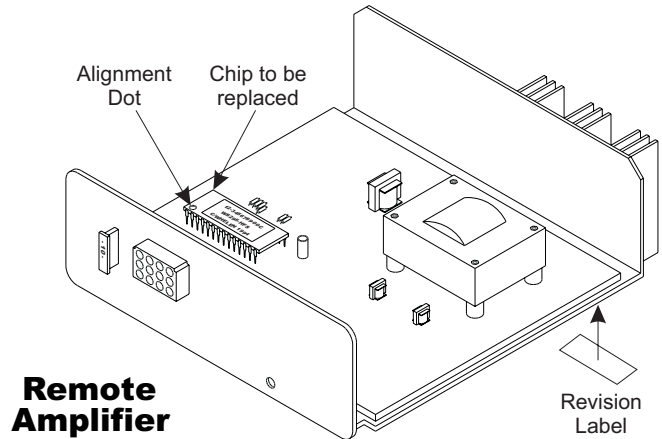


Control Head

Existing Chip Part Number:
77-3300117*-1

Replacement Chip Part Number:
77-3300344*-1

Note: The asterisk (*) in the above Part Numbers represents the revision level of that particular chip.



Remote Amplifier

Existing Chip Part Number:
77-3400118*-1

Replacement Chip Part Number:
77-3400535*-1

Note: The asterisk (*) in the above Part Numbers represents the revision level of that particular chip.