

WHELEN[®]

ENGINEERING COMPANY INC.

Route 145, Winthrop Road,
Chester, Connecticut 06412

Phone: (860) 526-9504

Fax: (860) 526-4078

Internet: www.whelen.com

Sales e-mail: autosale@whelen.com

Canadian Sales e-mail: autocan@whelen.com

Customer Service e-mail: custserv@whelen.com

Installation Guide SRCV98CC Taillight Strobe System: HA239 with VPPS2E Power Supply

Safety First

This document provides all the necessary information to allow your Whelen product to be properly and safely installed. Before beginning the installation and/or operation of your new product, the installation technician and operator must read this manual completely. Important information is contained herein that could prevent serious injury or damage.

- **Proper installation of this product requires the installer to have a good understanding of automotive electronics, systems and procedures.**
- **If mounting this product requires drilling holes, the installer MUST be sure that no vehicle components or other vital parts could be damaged by the drilling process. Check both sides of the mounting surface before drilling begins. Also de-burr the holes and remove any metal shards or remnants. Install grommets into all wire passage holes.**
- **If this manual states that this product may be mounted with suction cups, magnets, tape or Velcro™, clean the mounting surface with a 50/50 mix of isopropyl alcohol and water and dry thoroughly.**
- **Do not install this product or route any wires in the deployment area of your air bag. Equipment mounted or located in the air bag deployment area will damage or reduce the effectiveness of the air bag, or become a projectile that could cause serious personal injury or death. Refer to your vehicle owners manual for the air bag deployment area. The User/Installer assumes full responsibility to determine proper mounting location, based on providing ultimate safety to all passengers inside the vehicle.**
- **For this product to operate at optimum efficiency, a good electrical connection to chassis ground must be made. The recommended procedure requires the product ground wire to be connected directly to the NEGATIVE (-) battery post.**
- **If this product uses a remote device to activate or control this product, make sure that this control is located in an area that allows both the vehicle and the control to be operated safely in any driving condition.**
- **Do not attempt to activate or control this device in a hazardous driving situation.**
- **If this product contains strobe light(s), halogen light(s) or high-intensity LEDs, do not stare directly into these lights at a close distance. Momentary blindness and/or eye damage could result.**
- **If this product contains strobe light(s), halogen light(s) or high-intensity LEDs, use only soap and water to clean the lamp lens. Use of other chemicals could result in premature lens cracking (crazing) and discoloration. Lenses in this condition have significantly reduced effectiveness and should be replaced immediately. Inspect and operate this product regularly to confirm its proper operation and mounting condition. Do not use a pressure washer to clean this product.**
- **It is recommended that these instructions be stored in a safe place and referred to when performing maintenance and/or reinstallation of this product.**
- **FAILURE TO FOLLOW THESE SAFETY PRECAUTIONS AND INSTRUCTIONS COULD RESULT IN DAMAGE TO THE PRODUCT OR VEHICLE AND/OR SERIOUS INJURY TO YOU AND YOUR PASSENGERS!**

For warranty information regarding this product, visit www.whelen.com/warranty

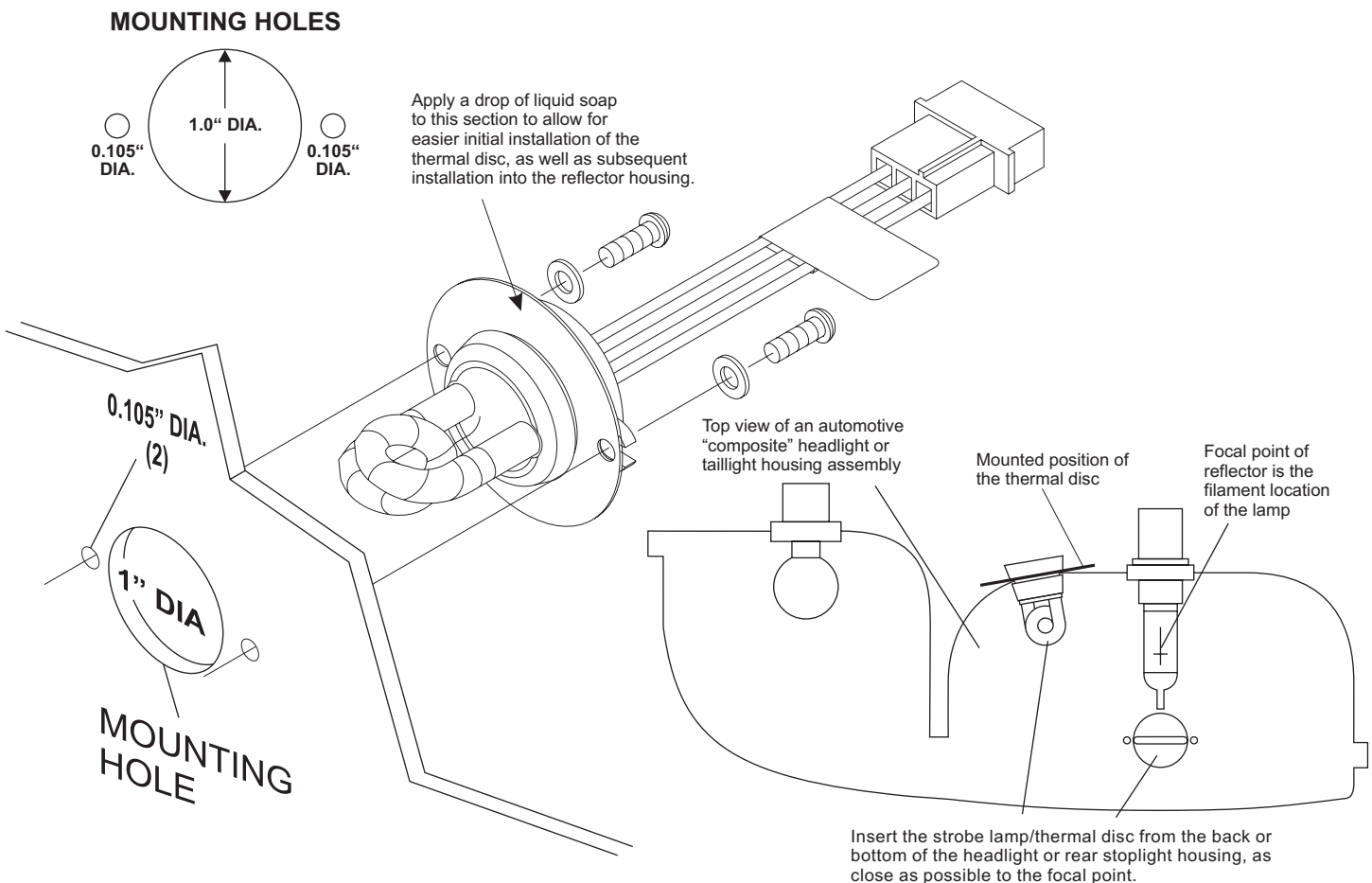
Mounting the SRCV98CC Taillight System:

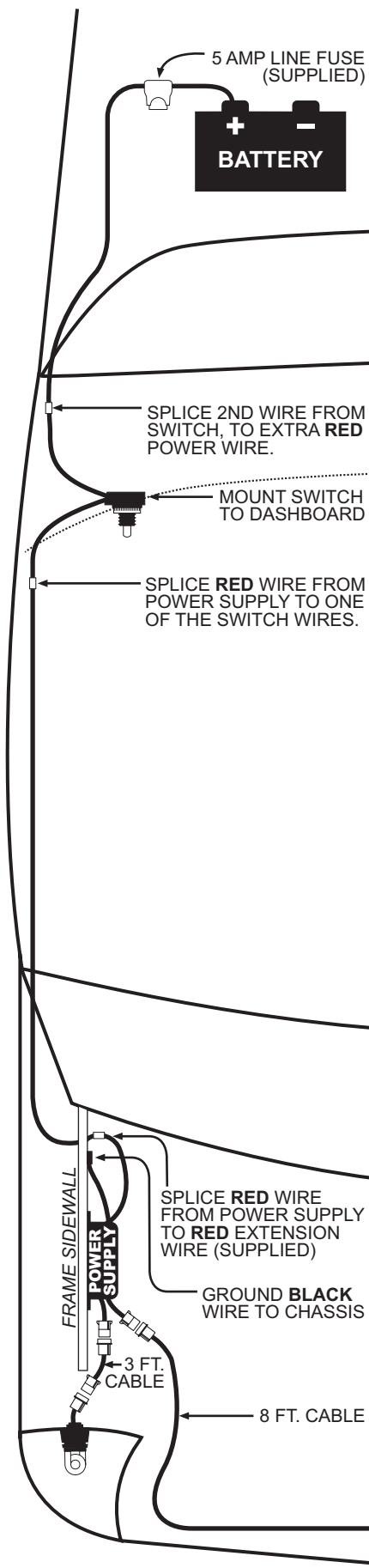
Before beginning the installation, it is a good idea to read through the *entire* instruction sheet, paying careful attention to the warnings. Below are instructions for mounting the HA-239 lightheads into your existing taillight housings. *Always check all measurements before doing any cutting or drilling.* You will need to install an On-Off switch into your dashboard. Be sure to install it in an easily accessible spot and be careful not to damage any other vehicle components while cutting or drilling. Refer to your power supply instructions for wiring and function information.

INSTALLATION OF A STROBE LAMP INTO AN AUTOMOTIVE TAILLIGHT:

1. Select the mounting location for the strobe light head, keeping in mind the following:
 - The strobe light will share the same reflector as the headlight, brake light, or signal light. Make sure that the strobe light does not interfere with the proper operation of these lights (Fig. 2).
 - There must be a minimum of 1 (one) inch of space between the strobe light and the lens.
 - The strobe light must not be installed above the horizontal centerline of the reflector.
 - The strobe light must not be installed above any OEM-supplied light.
2. Remove the "Composite" reflector assembly from the vehicle. Choose a surface in the rear or bottom of the "Composite" housing which is as flat as possible. Using a hole saw, cut a 1" hole (+0.030"/-0.000" tolerance) for the strobe lamp in the housing as shown in Fig. 1. Be sure to de-burr this hole completely. Mount the thermal disc onto the strobe light assembly with the disc holes aligned with the lamp ears as shown. Using a twisting motion, insert the lamp/thermal disc assembly into the reflector housing until it snaps into its proper position. Do not force the lamp into position. Mark the location for the two mounting holes (0.105" DIA.).
3. Re-install the lamp ass'y and using the hardware provided, secure the lamp to the reflector assembly as shown.

WARNING: High Voltage on glass tube. This strobe lamp unit is an open flash tube with no protective lens. Proper installation is required. Do not touch the strobe tube assembly while in operation.





Mounting the SRCV98CC Strobe System:

1. First mount the power supply to the vehicle frame sidewall as shown, and attach the ground lug (supplied) to the black wire from the power supply and screw the lug into the sidewall.
 2. Next mount the two HA-239's into the two taillight assemblies as described on the previous page.
 3. Locate the GREY 3 foot cable and plug it into one of the connectors coming from the power supply then plug the other end of the cable into the left side HA-239.
 4. Take the GREY 8 foot cable, plug it into the other connector coming from the power supply and plug the other end of that cable into the right side HA-239.
 5. Find the long RED wire (supplied) and splice it to the RED power wire coming from the power supply.
 6. Run the power wire along the inside of the vehicle as shown, ending at the dashboard, where you will mount your switch. After you make sure you have enough wire to reach the switch, cut off and save the extra wire (it will be needed for the next step).
 7. Splice the end of the power wire to one of the BLACK wires coming from the switch.
 8. Take the extra RED wire and splice it to the other wire coming from the switch.
- IMPORTANT!** Do not install the fuse into the inline fuse holder and apply power to the system until the entire installation is finished.
9. Splice the other end of this wire to the wire with the inline fuse. (supplied) and attach the other end of the fused wire to the positive terminal of the battery.

WARNING! All customer supplied wires, that connect to the positive (+) terminal of the battery, must be sized to supply at least 125% of the maximum operating current, and fused at the battery, to carry that load.