

WHELEN[®] ENGINEERING COMPANY INC.

51 Winthrop Road
 Chester, Connecticut 06412-0684
 Phone: (860) 526-9504
 Fax: (860) 526-4078
 Internet: www.whelen.com
 Sales e-mail: autosale@whelen.com
 Canadian Sales e-mail: autocan@whelen.com
 Customer Service e-mail: custserv@whelen.com

Installation Guide: Model SA350MH Harley-Davidson[®] Siren Speaker

DANGER! Sirens produces extremely loud emergency warning tones! Exposure to these tones without proper and adequate hearing protection, could cause ear damage and/or hearing loss! The Occupational Safety & Health Administration (www.osha.gov) provides information necessary to determine safe exposure times in Occupational Noise Exposure Section 1910.95. Until you have determined the safe exposure times for your specific application, operators and anyone else in the immediate vicinity should be required to wear an approved hearing protection device. **FAILURE TO FOLLOW THIS RECOMMENDATION COULD CAUSE HEARING LOSS!**

Safety First

This document provides all the necessary information to allow your Whelen product to be properly and safely installed. Before beginning the installation and/or operation of your new product, the installation technician and operator must read this manual completely. Important information is contained herein that could prevent serious injury or damage.

- Proper installation of this product requires the installer to have a good understanding of automotive electronics, systems and procedures.
- If mounting this product requires drilling holes, the installer **MUST** be sure that no vehicle components or other vital parts could be damaged by the drilling process. Check both sides of the mounting surface before drilling begins. Also de-burr any holes and remove any metal shards or remnants. Install grommets into all wire passage holes.
- If this manual states that this product may be mounted with suction cups, magnets, tape or Velcro[®], clean the mounting surface with a 50/50 mix of isopropyl alcohol and water and dry thoroughly.
- Do not install this product or route any wires in the deployment area of your air bag. Equipment mounted or located in the air bag deployment area will damage or reduce the effectiveness of the air bag, or become a projectile that could cause serious personal injury or death. Refer to your vehicle owner's manual for the air bag deployment area. The User/Installer assumes full responsibility to determine proper mounting location, based on providing ultimate safety to all passengers inside the vehicle.
- For this product to operate at optimum efficiency, a good electrical connection to chassis ground must be made. The recommended procedure requires the product ground wire to be connected directly to the **NEGATIVE (-)** battery post.
- If this product uses a remote device to activate or control this product, make sure this control is located in an area that allows both the vehicle and the control to be operated safely in any driving condition. **DO NOT ATTEMPT TO ACTIVATE OR CONTROL THIS DEVICE IN A HAZARDOUS DRIVING SITUATION.**
- It is recommended that these instructions be stored in a safe place and referred to when performing maintenance and/or reinstallation of this product.
- **FAILURE TO FOLLOW THESE SAFETY PRECAUTIONS AND INSTRUCTIONS COULD RESULT IN DAMAGE TO THE PRODUCT OR VEHICLE AND/OR SERIOUS INJURY TO YOU AND YOUR PASSENGERS!**

ACTIVATION OF THIS SIREN MAY DAMAGE UNPROTECTED EARS!



CAUTION

Loud siren noise can cause hearing damage and/or loss. Refer to OSHA Section 1910.95 prior to putting ANY siren into service!

For warranty information regarding this product, visit www.whelen.com/warranty

The model SA-350MH siren speaker is shipped without a connector attached to the speaker wires. The reason for this is that the wiring harness on the vehicle may be equipped with either an AMP socket connector, or a Deutsch® socket connector. A connector kit is included with the siren speaker and contains all the parts necessary for use with either connector.

1. Locate the speaker wire on the vehicle wiring harness and determine the kind of wiring harness used.
2. In the supplied connector kit, choose matching connector and pins, and install onto speaker wires.

NOTE: Speaker wires can be inserted into the chosen connector in either position since polarity is not important.

FIGURE 2. Crimp Deutsch pin to wire using Deutsch crimping tool DTT-16-00.

FIGURE 3. Grasp wire with crimped on pin approximately one inch behind the pin. Push pin all the way inside rear seal of connector until a click is felt. A slight tug on the wire will confirm that the pin is properly locked in place.

FIGURE 4. Once the two pins are in place inside the connector housing, use a needle nose pliers to insert the orange wedge inside the connector housing from the other end. The wedge will have to be fitted inside the cavity below the 2 pins.

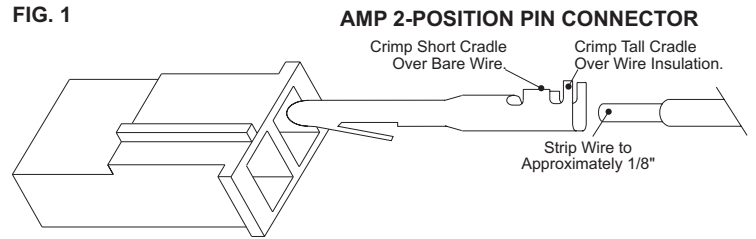


FIG. 2 DEUTSCH 2-POSITION PIN CONNECTOR

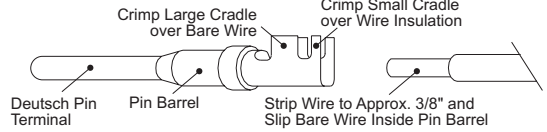


FIG. 3 Pin Position Numbers are on Side of Connector Housing

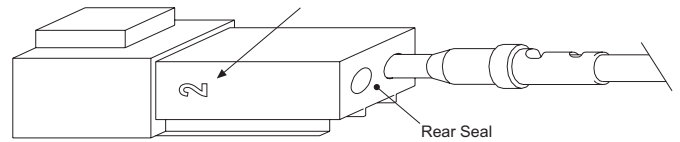
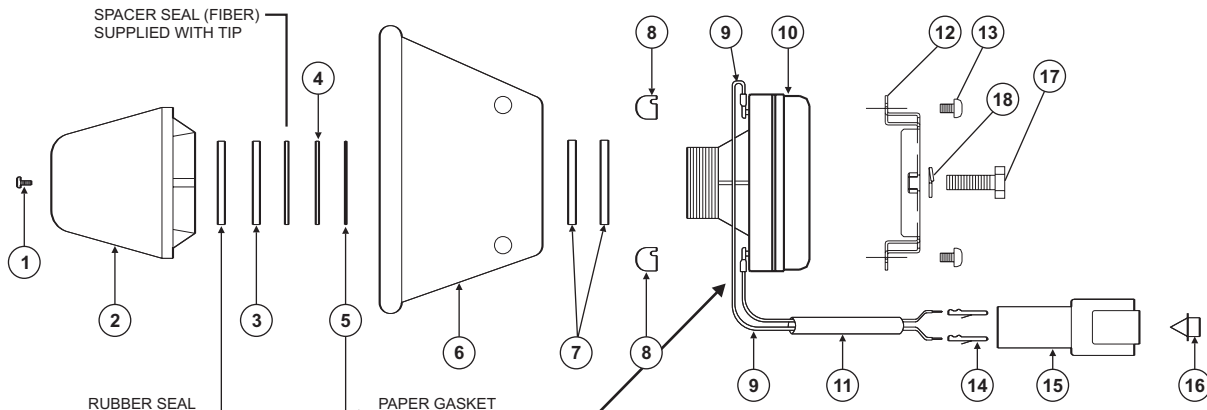
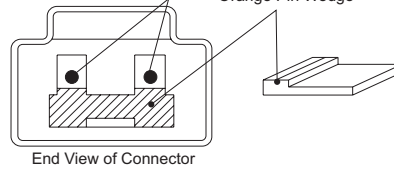
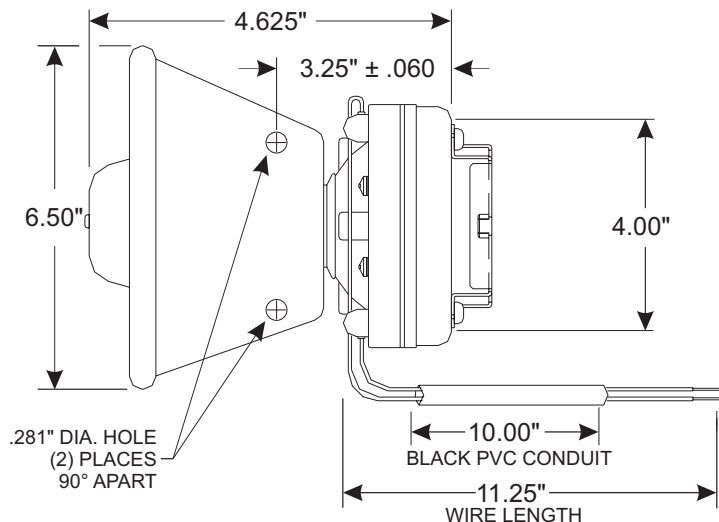


FIG. 4 Pins Orange Pin Wedge



IMPORTANT NOTE: When installing the speaker driver, make sure to keep the drainage hole to the bottom. The drainage hole is located under the model identification tag.



QTY	ITEM	PART NUMBER	DESCRIPTION
		01-0860541-00	SPEAKER MODEL SA-350MH
REF	1		#8 X 1/2" PHILLIPS PHSMS
1	2	72-4010291-00	SA 510-M1 TIP
1	3	38-0220049-00	RUBBER SEAL
1	4	38-0220048-00	SPACER SEAL / FIBER
REF	5	38-0220405-00	PAPER GASKET
1	6	72-2160158-65	150 M SPEAKER BELL
2	7	38-0220047-00	METAL GASKET
2	8	22-0410510-00	TERMINAL CAPS
2	9	67-1361600150	#16 BLACK 15" W/RECEPTICLE
1	10	43-0263146-00	SIREN DRIVER
1	11	26-0610158-00	PVC TUBING #6 BLACK #P-105
1	12	07-263152-007	ADAPTER BRACKET
2	13	14-130219-06	1/4 - 20x3/8" PPH SWEDGE SCREW
2	14	39-1H00316-35	PIN TERMINAL DEUTSCH®
1	15	39-1H02014-35	2 POS DEUTSCH PIN HSG
1	16	39-0015982-00	SECONDARY LOCK DEUTSCH
1	17		5/16 - 18 X 1/2" HEX HEAD CAP SCREW
1	18		5/16 SPLIT LOCKWASHER