

WHELEN[®]

ENGINEERING COMPANY INC.

51 Winthrop Road
 Chester, Connecticut 06412-0684
 Phone: (860) 526-9504
 Fax: (860) 526-4078
 Internet: www.whelen.com
 Sales e-mail: autosale@whelen.com
 Canadian Sales e-mail: autocan@whelen.com
 Customer Service e-mail: custserv@whelen.com

Installation Guide: SA314 / SA315 Siren Speaker Bracket 2000 to 2002 Chevrolet Impala

DANGER! Sirens produces extremely loud emergency warning tones! Exposure to these tones without proper and adequate hearing protection, could cause ear damage and/or hearing loss! The Occupational Safety & Health Administration (www.osha.gov) provides information necessary to determine safe exposure times in Occupational Noise Exposure Section 1910.95. Until you have determined the safe exposure times for your specific application, operators and anyone else in the immediate vicinity should be required to wear an approved hearing protection device. **FAILURE TO FOLLOW THIS RECOMMENDATION COULD CAUSE HEARING LOSS!**

Safety First

This document provides all the necessary information to allow your Whelen product to be properly and safely installed. Before beginning the installation and/or operation of your new product, the installation technician and operator must read this manual completely. Important information is contained herein that could prevent serious injury or damage.

- Proper installation of this product requires the installer to have a good understanding of automotive electronics, systems and procedures.
- If mounting this product requires drilling holes, the installer **MUST** be sure that no vehicle components or other vital parts could be damaged by the drilling process. Check both sides of the mounting surface before drilling begins. Also de-burr any holes and remove any metal shards or remnants. Install grommets into all wire passage holes.
- If this manual states that this product may be mounted with suction cups, magnets, tape or Velcro™, clean the mounting surface with a 50/50 mix of isopropyl alcohol and water and dry thoroughly.
- Do not install this product or route any wires in the deployment area of your air bag. Equipment mounted or located in the air bag deployment area will damage or reduce the effectiveness of the air bag, or become a projectile that could cause serious personal injury or death. Refer to your vehicle owners manual for the air bag deployment area. The User/Installer assumes full responsibility to determine proper mounting location, based on providing ultimate safety to all passengers inside the vehicle.
- For this product to operate at optimum efficiency, a good electrical connection to chassis ground must be made. The recommended procedure requires the product ground wire to be connected directly to the **NEGATIVE (-)** battery post.
- If this product uses a remote device to activate or control this product, make sure this control is located in an area that allows both the vehicle and the control to be operated safely in any driving condition. **DO NOT ATTEMPT TO ACTIVATE OR CONTROL THIS DEVICE IN A HAZARDOUS DRIVING SITUATION.**
- It is recommended that these instructions be stored in a safe place and referred to when performing maintenance and/or reinstallation of this product.
- **FAILURE TO FOLLOW THESE SAFETY PRECAUTIONS AND INSTRUCTIONS COULD RESULT IN DAMAGE TO THE PRODUCT OR VEHICLE AND/OR SERIOUS INJURY TO YOU AND YOUR PASSENGERS!**

**ACTIVATION OF THIS
 SIREN MAY DAMAGE
 UNPROTECTED EARS!**

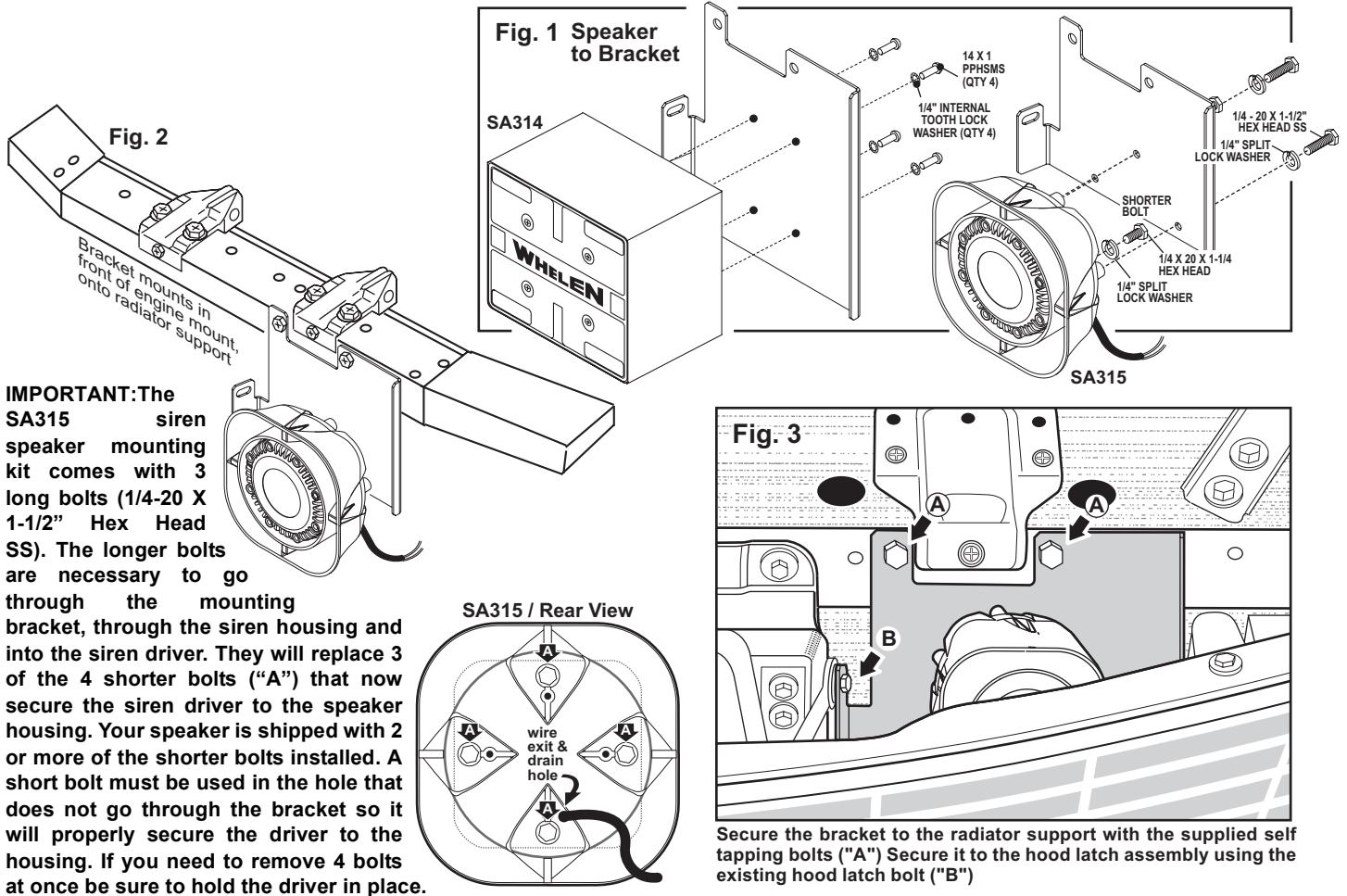


**Wear
 Protection!**

CAUTION

Loud siren noise can cause hearing damage and/or loss. Refer to OSHA Section 1910.95 prior to putting ANY siren into service!

For warranty information regarding this product, visit www.whelen.com/warranty



IMPORTANT: The SA315 siren speaker mounting kit comes with 3 long bolts (1/4-20 X 1-1/2" Hex Head SS). The longer bolts are necessary to go through the mounting bracket, through the siren housing and into the siren driver. They will replace 3 of the 4 shorter bolts ("A") that now secure the siren driver to the speaker housing. Your speaker is shipped with 2 or more of the shorter bolts installed. A short bolt must be used in the hole that does not go through the bracket so it will properly secure the driver to the housing. If you need to remove 4 bolts at once be sure to hold the driver in place.

1. Secure siren to bracket using the supplied hardware (Fig. 1).

WARNING: For drainage purposes, the speaker box's wire passage hole (which is also the siren drain hole) must be located in the "6 o'clock" (closer to the road) position for proper mounting. Improper mounting will not only result in driver failure, but will also void the product warranty.

WARNING! The use of any magnetically mounted warning device on the outside of a vehicle in motion is not recommended and is at the sole risk and responsibility of the user.

2. Locate the plastic panel covering the area between the grill and the radiator support and remove its three mounting screws (refer to the vehicle owner's manual for detailed information). Remove the panel from the vehicle.
3. Remove the bolt ("B") indicated in figure 3 from the hood latch assembly. Use this bolt to secure the side of the bracket to the vehicle.
4. Find the driver side engine mount strut bracket mounted to the top of the radiator support. Locate the two existing holes in the radiator support on either side of the engine mount strut bracket. Place the siren bracket onto the mounting surface lining up these two holes with the two mounting holes in the bracket

5. Using the 2 supplied self tapping screws ("A") and a drill with the appropriate size socket, secure the bracket to the vehicle. Using the bracket as a guide, drill the self tapping screws into the mounting area through the holes in the bracket. The hood latch cable should rest above the siren. Do not bend or kink this cable during installation.

IMPORTANT: You must drill the self tapping screws in until they are almost tight and then tighten them by hand. If you drill them all the way in, they will strip the hole.

6. Next secure the side of the bracket to the hood latch assembly using the bolt you removed in step 3.
7. Extend the WHITE (positive) and BLACK (negative) wires to your siren amplifier and connect as shown in the amplifiers instructions.
8. Return the plastic panel removed in step 2 to its mounting location and secure with its original hardware.

IMPORTANT: It is the responsibility of the installation technician to make sure that the installation and operation of this product will not interfere with or compromise the operation or efficiency of any vehicle equipment!