

WHELEN[®]

ENGINEERING COMPANY INC.

51 Winthrop Road
Chester, Connecticut 06412-0684
Phone: (860) 526-9504
Fax: (860) 526-4078
Internet: www.whelen.com
Sales e-mail: autosale@whelen.com
Canadian Sales e-mail: canadiansales@whelen.com
Customer Service e-mail: custserv@whelen.com

Installation Guide: 400 Series Lighthouse Halogen Warning, Halogen Brake / Tail / Turn, Halogen-LED Warning

Safety First

This document provides all the necessary information to allow your Whelen product to be properly and safely installed. Before beginning the installation and/or operation of your new product, the installation technician and operator must read this manual completely. Important information is contained herein that could prevent serious injury or damage.

- **Proper installation of this product requires the installer to have a good understanding of automotive electronics, systems and procedures.**
- **If mounting this product requires drilling holes, the installer MUST be sure that no vehicle components or other vital parts could be damaged by the drilling process. Check both sides of the mounting surface before drilling begins. Also de-burr any holes and remove any metal shards or remnants. Install grommets into all wire passage holes.**
- **If this manual states that this product may be mounted with suction cups, magnets, tape or Velcro[®], clean the mounting surface with a 50/50 mix of isopropyl alcohol and water and dry thoroughly.**
- **Do not install this product or route any wires in the deployment area of your air bag. Equipment mounted or located in the air bag deployment area will damage or reduce the effectiveness of the air bag, or become a projectile that could cause serious personal injury or death. Refer to your vehicle owner's manual for the air bag deployment area. The User/Installer assumes full responsibility to determine proper mounting location, based on providing ultimate safety to all passengers inside the vehicle.**
- **For this product to operate at optimum efficiency, a good electrical connection to chassis ground must be made. The recommended procedure requires the product ground wire to be connected directly to the NEGATIVE (-) battery post.**
- **If this product uses a remote device to activate or control this product, make sure that this control is located in an area that allows both the vehicle and the control to be operated safely in any driving condition.**
- **Do not attempt to activate or control this device in a hazardous driving situation.**
- **This product contains either strobe light(s), halogen light(s), high-intensity LEDs or a combination of these lights. Do not stare directly into these lights. Momentary blindness and/or eye damage could result.**
- **Use only soap and water to clean the outer lens. Use of other chemicals could result in premature lens cracking (crazing) and discoloration. Lenses in this condition have significantly reduced effectiveness and should be replaced immediately. Inspect and operate this product regularly to confirm its proper operation and mounting condition. Do not use a pressure washer to clean this product.**
- **It is recommended that these instructions be stored in a safe place and referred to when performing maintenance and/or reinstallation of this product.**
- **FAILURE TO FOLLOW THESE SAFETY PRECAUTIONS AND INSTRUCTIONS COULD RESULT IN DAMAGE TO THE PRODUCT OR VEHICLE AND/OR SERIOUS INJURY TO YOU AND YOUR PASSENGERS!**

For warranty information regarding this product, visit www.whelen.com/warranty

Installation:

Caution: Permanent mounting of this product will require drilling. It is absolutely necessary to make sure that no other vehicle components could be damaged by this process. Check both sides of the mounting surface before starting. If damage is likely, select a different mounting location.

WARNING! All customer supplied wires that connect to the positive terminal of the battery must be sized to supply at least 125% of the maximum operating current and **FUSED** at the battery to carry that load. **DO NOT USE CIRCUIT BREAKERS WITH THIS PRODUCT!**

1. Position the lighthead in its approximate mounting location to make sure that the lighthead will not interfere with any existing equipment. Also be aware of any and all items on the opposite side of the mounting surface to prevent any possible damage to existing components.
2. Remove the lighthead. Measure and mark off onto the mounting surface, the mounting holes and cut-out shown in the mounting diagram.
3. Use a #30 drill bit to drill 4 pilot holes.
4. Using a cutting tool, cut an opening in the mounting surface as indicated.
5. Extend the wires (or route the cable assembly if included) to the power source (see wiring). Test operation of lighthead before securing to vehicle.
6. Secure the assembly onto the mounting surface with the supplied sheet metal screws.

IMPORTANT! Before returning the vehicle to active service, visually confirm the proper operation of this product, as well as all vehicle components/equipment.

IMPORTANT WARNING!

CAUTION! DO NOT LOOK DIRECTLY AT THESE LED'S WHILE THEY ARE ON. MOMENTARY BLINDNESS AND/OR EYE DAMAGE COULD RESULT!

WIRING:

HALOGEN: WARNING

RED +12 VDC
WHITE GROUND

HALOGEN: BRAKE/TAILO/TURN

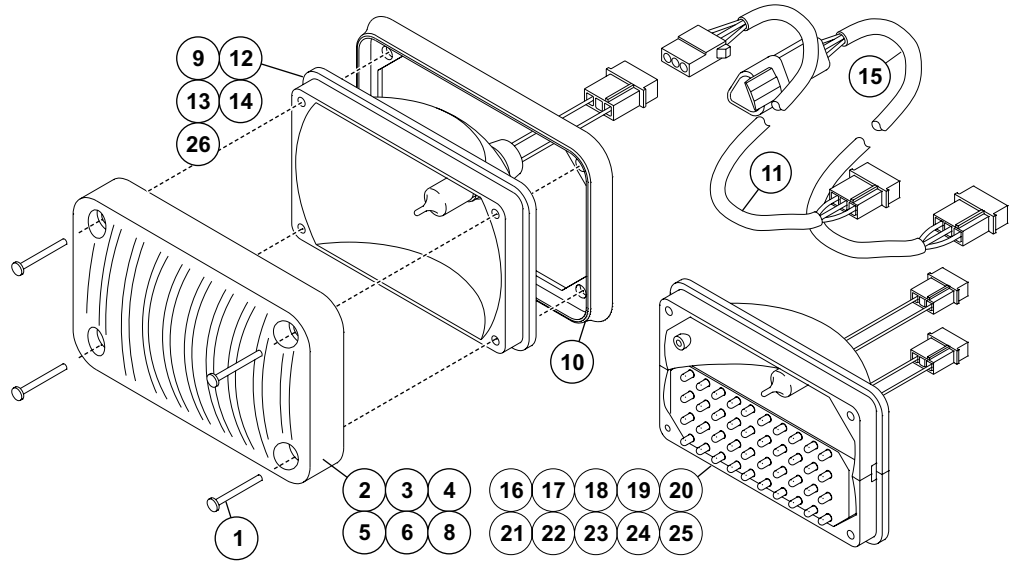
RED TAILLIGHT / +12VDC
BLACK BRAKE LIGHT / +12VDC
WHITE GROUND

LED: STEADY

This wire will be the +12 VDC
color of the LED
BLACK-WHITE (24V) GROUND
or BLACK (12V)

LED: BRAKE/TAILO/TURN

YELLOW BRAKE LIGHT / +12VDC
BROWN TAILLIGHT / +12VDC
WHITE GROUND



QTY	QTY	QTY	ITEM	PART NUMBER	DESCRIPTION
	*			01-0663477-__	MODEL 400 SERIES HALOGEN
	*			01-0663477 1	MODEL 400 SERIES BRAKE/TAILO/TURN
	*			01-0663477 2	MODEL 400 SERIES HALOGEN-LED
4	4	4	1	15-061416-240	SCREW, #6 x 1 1/2" PPHSMS
A/R	A/R	A/R	2	68-1183726-1S	LENS, AMBER
A/R	-	A/R	3	68-1183726-2S	LENS, BLUE
A/R	-	A/R	4	68-1183726-3S	LENS, CLEAR
A/R	-	A/R	5	68-1183726-4S	LENS, GREEN
A/R	A/R	A/R	6	68-1183726-5S	LENS, RED
-	-	A/R	8	02-0363483__S	SPLIT LENS, HALOGEN ONLY, SPECIFY COLORS
-	-	A/R	9	02-0363189-00	ASSY., REFLECTOR, HALOGEN-WARNING, AMP
1	1	1	10	38-0463924-00	GASKET, SURFACE MOUNT
A/R	A/R	A/R	11	01-0440624-15	CABLE ASSY., with KIT
-	A/R	-	12	02-0363189-01	ASSY., REFLECTOR (BRAKE/TAILO/TURN) AMP
-	-	A/R	13	02-0363189-02	ASSY., REFLECTOR, HALOGEN WARNING, DEUTSCH
-	A/R	-	14	02-0363189-03	ASSY., REFLECTOR, BRAKE/TAILO/TURN, DEUTSCH
A/R	A/R	A/R	15	01-0442199-15	CABLE ASSY., with KIT, WATERPROOF
A/R	-	-	16	02-0363318-H1	ASSY, REFLECTOR HALOGEN-LED, AMBER
A/R	-	-	17	02-0363318-H2	ASSY, REFLECTOR HALOGEN-LED, BLUE
A/R	-	-	18	02-0363318-H3	ASSY., REFLECTOR HALOGEN-LED, WHITE
A/R	-	-	19	02-0363318-H4	ASSY, REFLECTOR HALOGEN-LED, GREEN
A/R	-	-	20	02-0363318-H5	ASSY, REFLECTOR HALOGEN-LED, RED
A/R	-	-	21	02-03633181H1	ASSY, REFLECTOR HALOGEN-LED, AMBER, DEUTSCH
A/R	-	-	22	02-03633181H2	ASSY, REFLECTOR HALOGEN-LED, BLUE, DEUTSCH
A/R	-	-	23	02-03633181H3	ASSY, REFLECTOR HALOGEN-LED, WHITE, DEUTSCH
A/R	-	-	24	02-03633181H4	ASSY, REFLECTOR HALOGEN-LED, GREEN, DEUTSCH
A/R	-	-	25	02-03633181H5	ASSY, REFLECTOR HALOGEN-LED, RED, DEUTSCH
-	-	A/R	26	02-0363189-07	ASSY., REFLECTOR (HALOGEN WARNING) 2P DEUTSCH

PART NUMBER KEY:

CABLE COLOR STYLE

01-0663477

STYLE

-- WARNING LIGHT

1 = BRAKE/TAILO/TURN

2 = HALOGEN / LED WARNING

COLOR:

R = RED

B = BLUE

G = GREEN

A = AMBER

C = CLEAR

* = SPLIT

5 = RED-CLEAR

2 = BLUE-CLEAR

4 = GREEN-CLEAR

1 = AMBER-CLEAR

HALOGEN ONLY

CABLE:

0 = AMP without CABLE

1 = AMP with CABLE

2 = DEUTSCH without CABLE

3 = DEUTSCH with CABLE

4 = 2 POS DEUTSCH without CABLE

