

WHELEN[®]

ENGINEERING COMPANY INC.

Route 145, Winthrop Road,
Chester, Connecticut 06412

Phone: (860) 526-9504

Fax: (860) 526-4078

Internet: www.whelen.com

Sales e-mail: autosale@whelen.com

Canadian Sales e-mail: autocan@whelen.com

Customer Service e-mail: custserv@whelen.com

Installation Manual: 700-series Sun-Snow-Fog Lighthouse

Safety First

This document provides all the necessary information to allow your Whelen product to be properly and safely installed. Before beginning the installation and/or operation of your new product, the installation technician and operator must read this manual completely. Important information is contained herein that could prevent serious injury or damage.

- **Proper installation of this product requires the installer to have a good understanding of automotive electronics, systems and procedures.**
- **If mounting this product requires drilling holes, the installer MUST be sure that no vehicle components or other vital parts could be damaged by the drilling process. Check both sides of the mounting surface before drilling begins. Also de-burr any holes and remove any metal shards or remnants. Install grommets into all wire passage holes.**
- **If this manual states that this product may be mounted with suction cups, magnets, tape or Velcro™, clean the mounting surface with a 50/50 mix of isopropyl alcohol and water and dry thoroughly.**
- **Do not install this product or route any wires in the deployment area of your air bag. Equipment mounted or located in the air bag deployment area will damage or reduce the effectiveness of the air bag, or become a projectile that could cause serious personal injury or death. Refer to your vehicle owners manual for the air bag deployment area. The User/Installer assumes full responsibility to determine proper mounting location, based on providing ultimate safety to all passengers inside the vehicle.**
- **For this product to operate at optimum efficiency, a good electrical connection to chassis ground must be made. The recommended procedure requires the product ground wire to be connected directly to the NEGATIVE (-) battery post.**
- **If this product uses a remote device to activate or control this product, make sure that this control is located in an area that allows both the vehicle and the control to be operated safely in any driving condition.**
- **Do not attempt to activate or control this device in a hazardous driving situation.**
- **This product contains either strobe light(s), halogen light(s), high-intensity LEDs or a combination of these lights. Do not stare directly into these lights. Momentary blindness and/or eye damage could result.**
- **Use only soap and water to clean the outer lens. Use of other chemicals could result in premature lens cracking (crazing) and discoloration. Lenses in this condition have significantly reduced effectiveness and should be replaced immediately. Inspect and operate this product regularly to confirm its proper operation and mounting condition. Do not use a pressure washer to clean this product.**
- **It is recommended that these instructions be stored in a safe place and referred to when performing maintenance and/or reinstallation of this product.**
- **FAILURE TO FOLLOW THESE SAFETY PRECAUTIONS AND INSTRUCTIONS COULD RESULT IN DAMAGE TO THE PRODUCT OR VEHICLE AND/OR SERIOUS INJURY TO YOU AND YOUR PASSENGERS!**

For warranty information regarding this product, visit www.whelen.com/warranty

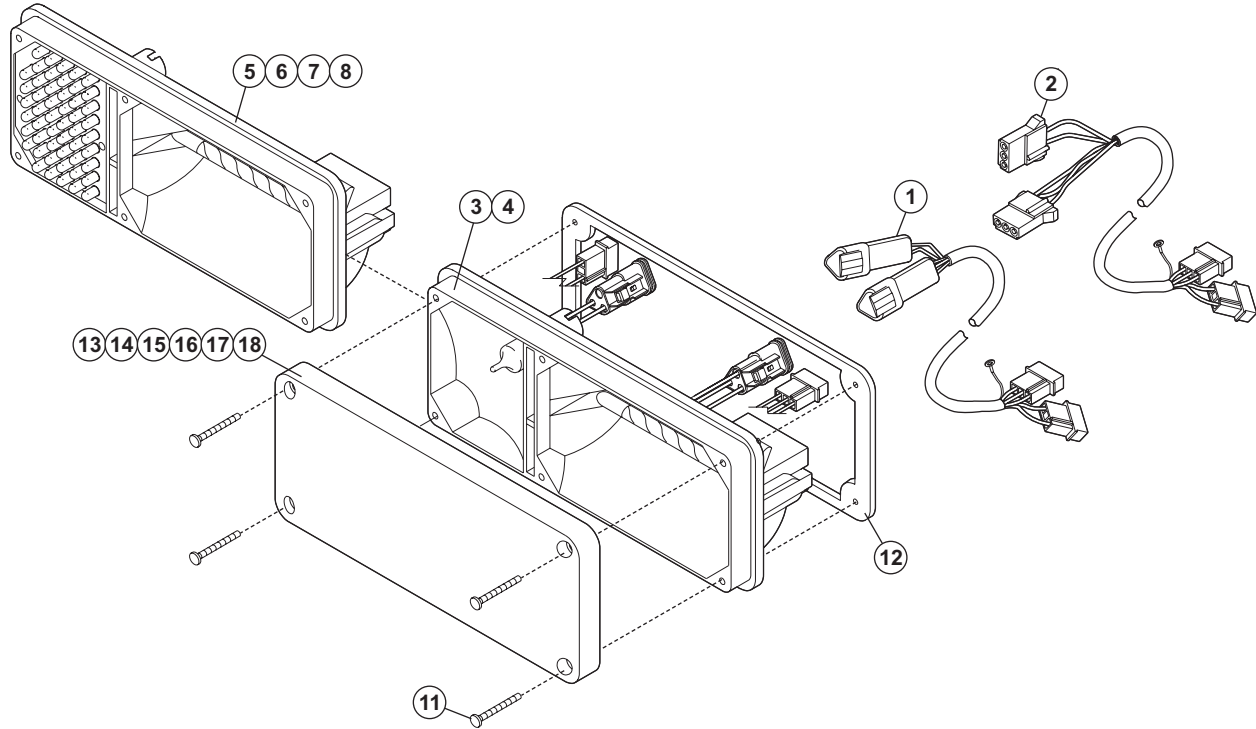
Installation:

WARNING! The strobe light power supply is a high voltage device. Do not touch or remove the strobe tube assembly while in operation. Wait 10 minutes after disconnecting the unit from its power source before starting any work or trouble shooting.

WARNING! All customer supplied wires that connect to the positive terminal of the battery must be sized to supply at least 125% of the maximum operating current and **FUSED** at the battery to carry that load. **DO NOT USE CIRCUIT BREAKERS WITH THIS PRODUCT!**

First check behind the proposed mounting area to make sure you won't compromise any other vehicle components. There must be at least 1-3/4" clearance behind the lighthouse and the mounting surface must be flat.

1. Measuring from the center, mark off the mounting holes and cut out area. Be sure to double check all of your measurements before cutting or drilling.
2. Drill the 4 pilot holes for the #6 sheet metal mounting screws then cut out the mounting hole as indicated.
3. Plug the cable into the lighthouse then route the cable to power connecting it as shown in the wiring diagram.
4. Test the lighthouse, then secure the assembly onto the mounting surface with the supplied sheet metal screws.



PART NUMBER / EXAMPLE

01-0683720

CONN/CABLE REQ.
LENS COLOR
HALOGEN/LED

CONNECTOR / CABLE

0 = AMP CONNECTOR without CABLE
1 = AMP CONNECTOR with CABLE
2 = DEUTSCH CONNECTOR without CABLE
3 = DEUTSCH CONNECTOR with CABLE

LENS COLOR

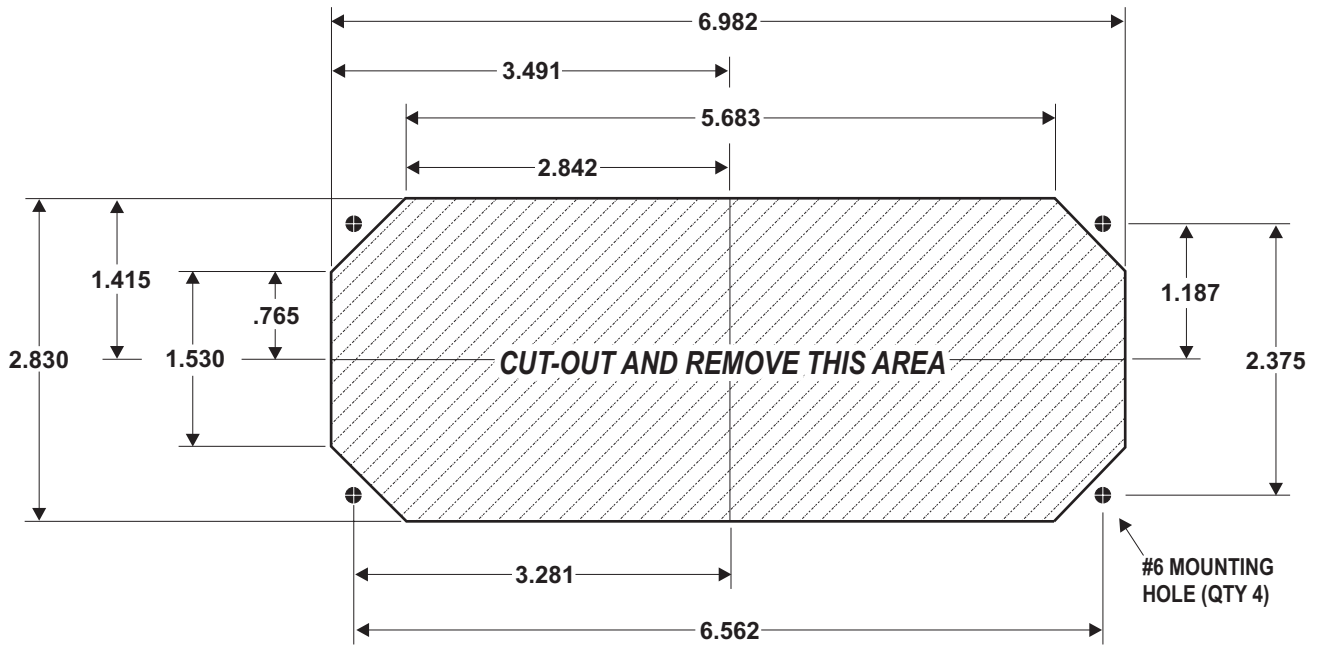
A = AMBER
B = BLUE
C = CLEAR
G = GREEN
R = RED
5 = E-SPEC RED

HALOGEN-LED

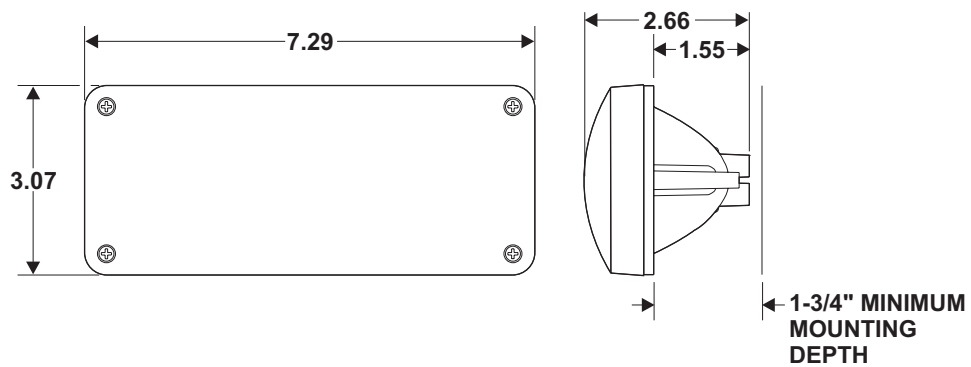
- = HALOGEN
A = AMBER LED
R = RED LED

QTY	QTY	QTY	QTY	QTY	QTY	QTY	QTY	QTY	ITEM	PART NUMBER	DESCRIPTION
								*		01-0683720-_0	700 STROBE/HALOGEN LIGHTHEAD / AMP without CABLE
								*		01-0683720-_1	700 STROBE/HALOGEN LIGHTHEAD / AMP with CABLE
						*				01-0683720-_2	700 STROBE/HALOGEN LIGHTHEAD / DEUTSCH without CABLE
						*				01-0683720-_3	700 STROBE/HALOGEN LIGHTHEAD / DEUTSCH with CABLE
						*				01-0683720-_0	700 STROBE/LED LIGHTHEAD / AMP without CABLE
			*							01-0683720-_1	700 STROBE/LED LIGHTHEAD / AMP with CABLE
	*									01-0683720-_2	700 STROBE/LED LIGHTHEAD / DEUTSCH without CABLE
*										01-0683720-_3	700 STROBE/LED LIGHTHEAD / DEUTSCH with CABLE
1	-	-	-	1	-	-	-	-	1	01-0442685-00	CABLE INSTALLATION KIT / WATERPROOF
-	-	1	-	-	-	1	-	-	2	01-0442685-01	CABLE INSTALLATION KIT
-	-	-	-	1	1	-	-	-	3	02-0363031-00	REFLECTOR ASSEMBLY 700 STROBE-HALOGEN / WATERPROOF
-	-	-	-	-	-	1	1	-	4	02-0363031-01	REFLECTOR ASSEMBLY 700 STROBE-HALOGEN
A/R	A/R	-	-	-	-	-	-	-	5	02-0363031-A0	REFLECTOR ASSEMBLY 700 STROBE-LED / WATERPROOF / AMBER
-	-	A/R	A/R	-	-	-	-	-	6	02-0363031-A1	REFLECTOR ASSEMBLY 700 STROBE-LED- AMBER
A/R	A/R	-	-	-	-	-	-	-	7	02-0363031-R0	REFLECTOR ASSEMBLY 700 STROBE-LED / WATERPROOF / RED
-	-	A/R	A/R	-	-	-	-	-	8	02-0363031-R1	REFLECTOR ASSEMBLY / 700 STROBE-LED / RED
4	4	4	4	4	4	4	4	4	11	15-061416-240	SCREW / #6 X 1-1/2" PPHSMS
1	1	1	1	1	1	1	1	1	12	38-0262823-00	GASKET
A/R	A/R	A/R	A/R	A/R	A/R	A/R	A/R	A/R	13	68-3183573-1S	LENS / AMBER with SEAL
-	-	-	-	A/R	A/R	A/R	A/R	A/R	14	68-3183573-2S	LENS / BLUE with SEAL
-	-	-	-	A/R	A/R	A/R	A/R	A/R	15	68-3183573-3S	LENS / CLEAR with SEAL
-	-	-	-	A/R	A/R	A/R	A/R	A/R	16	68-3183573-4S	LENS / GREEN with SEAL
A/R	A/R	A/R	A/R	A/R	A/R	A/R	A/R	A/R	17	68-3183573-5S	LENS / RED with SEAL
-	-	-	-	A/R	A/R	A/R	A/R	A/R	18	68-3183573E5S	LENS / E-SPEC RED with SEAL

700 SERIES S-S-F LIGHTHEAD MOUNTING DIMENSIONS



700 SERIES S-S-F LIGHTHEAD / DIMENSIONS



WIRING

