

# WHELEN<sup>®</sup>

ENGINEERING COMPANY INC.

Route 145, Winthrop Road,

Chester, Connecticut 06412

Phone: (860) 526-9504

Fax: (860) 525-4078

Internet: [www.whelen.com](http://www.whelen.com)

Sales e-mail: [autosale@whelen.com](mailto:autosale@whelen.com)

Canadian Sales e-mail: [autocan@whelen.com](mailto:autocan@whelen.com)

Customer Service e-mail: [custserv@whelen.com](mailto:custserv@whelen.com)

## Installation Guide Traffic Advisor model SCSS85

### Automotive: Serial Communication

### Safety First

This document provides all the necessary information to allow your Whelen product to be properly and safely installed. Before beginning the installation and/or operation of your new product, the installation technician and operator must read this manual completely. Important information is contained herein that could prevent serious injury or damage.

- **Proper installation of this product requires the installer to have a good understanding of automotive electronics, systems and procedures.**
- **If mounting this product requires drilling holes, the installer MUST be sure that no vehicle components or other vital parts could be damaged by the drilling process. Check both sides of the mounting surface before drilling begins. Also de-burr any holes and remove any metal shards or remnants. Install grommets into all wire passage holes.**
- **If this product is mounted with tape or Velcro™, clean the mounting surface with a 50/50 mix of isopropyl alcohol and water and dry thoroughly.**
- **Do not install this product or route any wires in the deployment area of your air bag. Equipment mounted or located in the air bag deployment area will damage or reduce the effectiveness of the air bag, or become a projectile that could cause serious personal injury or death. Refer to your vehicle owners manual for the air bag deployment area. The User/Installer assumes full responsibility to determine proper mounting location, based on providing ultimate safety to all passengers inside the vehicle.**
- **For this product to operate at optimum efficiency, a good electrical connection to chassis ground must be made. The recommended procedure requires the product ground wire to be connected directly to the NEGATIVE (-) battery post.**
- **If this product uses a remote device to activate or control this product, make sure that this device is located in an area that allows both the vehicle and the device to be operated safely in any driving condition.**
- **Do not attempt to activate or control this device in a hazardous driving situation.**
- **If this product contains strobe light(s), halogen light(s) or high-intensity LEDs, do not stare directly into these lights. Momentary blindness and/or eye damage could result.**
- **Use only soap and water to clean the outer lens. Use of other chemicals could result in premature lens cracking (crazing) and discoloration. Lenses in this condition have significantly reduced effectiveness and should be replaced immediately. Inspect and operate this product regularly to confirm its proper operation and mounting condition. Do not use a pressure washer to clean this product.**
- **It is recommended that these instructions be stored in a safe place and referred to when performing maintenance and/or reinstallation of this product.**
- **FAILURE TO FOLLOW THESE SAFETY PRECAUTIONS AND INSTRUCTIONS COULD RESULT IN DAMAGE TO THE PRODUCT OR VEHICLE AND/OR SERIOUS INJURY TO YOU AND YOUR PASSENGERS!**

**Mounting the Lightbar: Selecting a Location**

- When routing the wires, it is important to choose a path that will keep these wires away from excessive heat and from any vehicle equipment that could compromise the integrity of the wires (ex. trunk lids, door jams, etc.).
- When the best mounting location has been determined, secure the unit to its mounting surface using the supplied hardware.

**Caution:** As it will be necessary to drill holes into the mounting surface, the installer **MUST** be sure that no vehicle components or other vital parts will be damaged by the drilling process. Check both sides of the mounting surface before drilling begins!

**Note:** When facing the display, the cable harness should exit from the right side of the bar.

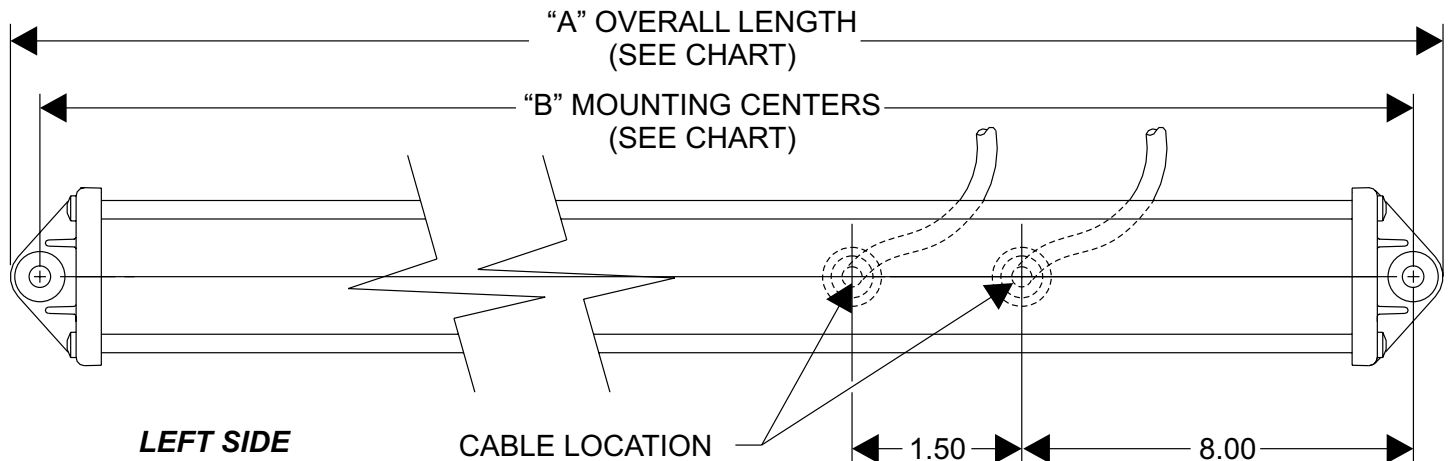
1. Position the unit in its proposed mounting location to ensure that it fits properly. With the unit in place, use an awl or other suitable tool and scribe the areas to be drilled.

2. Using an appropriately sized drill bit, drill a hole in each of the areas scribed in step 1.
3. **As accurately as possible**, measure a distance of 8" from the right-hand mounting hole as shown below. Mark this area. Now measure an additional 1½" along the same axis and mark that area.
4. As shown below, drill a 1" dia. cable access hole in the mounting surface at both of these locations.
5. Apply a bead of RTV Silicone around the area where the cables exit the backside of the extrusion. Make sure that this bead is large enough to surround the holes drilled in the previous step and prevent water entry.
6. Return the unit to its mounting location and using the supplied hardware, mount the unit as shown.

The MPC Control Head is used to operate the models represented in this manual. Please refer to the MPC manual for operating information.

DESCRIPTION	DIMENSION "A"	DIMENSION "B"
SCSS85	44.95	44.07

**READ BEFORE INSTALLING!!!**  
 Do not install this product or route any wires in the deployment area of your airbag. Equipment mounted or located in the airbag deployment area will damage or reduce the effectiveness of the airbag, or become a projectile that could cause serious personal injury or death. Refer to your vehicle owners manual for the air bag deployment area. The User/Installer assumes full responsibility to determine proper mounting location, based on providing ultimate safety to all passengers inside the vehicle. Whelen Engineering Co. assumes no liability or responsibility for determining individual applications or exact installation location criteria.



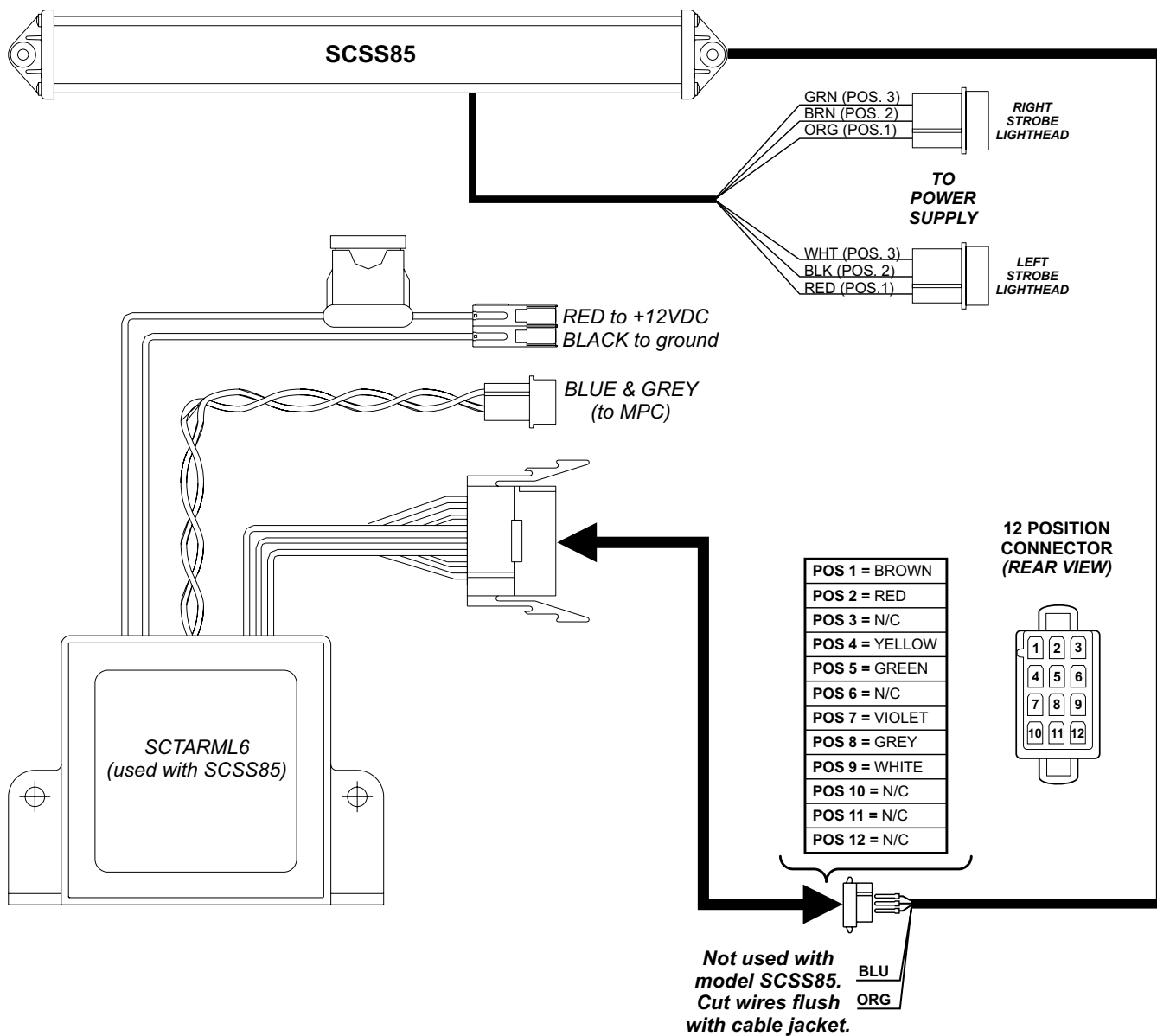
**Wiring the Traffic Advisor System:**

**WARNING:** All customer supplied wires, that connect to the positive terminal of the battery, must be sized to supply at least 125% of the maximum operating current, and fused "at the battery" to carry the load.

1. Extend the cable from the SCL to the SCTARML6 installed on your vehicle.
2. Following the pin chart below, insert the contact wires into their assigned positions. A gentle pull on the wires will confirm they were properly inserted.
3. Confirm that the remaining SCTARML6 wires are connected as shown below. Refer to your MPC manual for operating procedures.

4. Extend the strobe cable to your strobe power supply. Insert the wires into their designated positions. Plug the strobe connectors into the desired power supply ports.

After all connections have been made, inspect the fuses at the MPC and at the SCTARML6. If either of these fuses are blown, carefully inspect all of the circuit wires and make sure they are wired correctly. Replace the blown fuses with one of an identical amp rating as the original. If these fuses blow after installation or activation, contact Whelen Engineering Technical Support.



QTY.	ITEM	PART NUMBER	DESCRIPTION
*		01-0683743S( )	TAASSY, LED L P W/STROBES SCSS85*
1	1	46-0763517-21	ASSY, 9IC CABLE (20') (6 LIGHT)
1	2	46-0963521-00	ASS'Y, CABLE INPUT HARNESS (STROBE)
2	3	39-0403013-04	3 POS. AMP PIN HSG.
1	4	39-0412014-14	12 POS. AMP PIN HSG.
1	5	11-363522-042	EXTRUSION, HOUSING - MACH'D (42.75")
2	6	13-148120-080	NUT, HEX - 5/16-18 ELASTIC STOP
2	7	16-1402420-05	WASHER, FLAT - 5/16
4	8	14-104286-16JA	SCREW, #10-24 X 1.25" TX PHD
2	9	11-263424-007	ENDCAP, BLACK
2	10	38-0263302-00	GASKET, DIVIDER
2	11	14-148436-120	BOLT, 5/16-18 X 3/4 HHSS
2	12	39-0403023-04	HOUSING, SOCKET 3 POS AMP
2	13	07-742867-001	PLATE, STROBE MOUNTING
2	14	02-0363043-00	LINEAR STROBE ASSY, 14 SERIES
12	15	15-061416-060	SCREW, #6 X 3/8 PPH TYPE A SS
16	16	13-062C40-16J	SCREW GROMMET, #6 FASTEX
6	17	02-036330921A	S/A 500 LED W/O FLG ST MAX AMB 2 POS
12	18	15-061416-200	SCREW, #6 X 1 1/4 PPHSMS
A/R	19	68-1963333A06	LENS, AMBER (5-1/4 LONG)
A/R	20	68-1963333B06	LENS, BLUE (5-1/4 LONG)
A/R	21	68-1963333C06	LENS, CLEAR (5-1/4 LONG)
A/R	22	68-1963333G06	LENS, GREEN (5-1/4 LONG)
A/R	23	68-1963333R06	LENS, RED (5-1/4 LONG)
3	24	02-0342791-00	ASSY, LENS DIVIDER
2	25	68-1963333A07	LENS, AMBER (15-7/16" LONG)
1	26	21-11101612-0	GROMMET, 1/2"
1	27	21-11122002-0	GROMMET, 5/8"
1	28	26-0121053-00	CLAMP, 3/8" RICHCO SHC-23
1	29	26-0215001-06	TYRAP 6" T&B TY-24MX
1	30	39-0401323-04	HOUSING, SOCKET - 1 POS AMP
1	31	46-0963518-01	HARNESS ASSY, (6 LIGHT)

The outer surfaces of this product may be cleaned with mild soap and water. Use of any other chemicals may void product warranty. Do not use a pressure washer.

