

WHELEN[®]

ENGINEERING COMPANY INC.

Route 145, Winthrop Road,
Chester, Connecticut 06412
Phone: (860) 526-9504
Fax: (860) 526-2009
Internet: www.whelen.com
Sales/Service e-mail: aviation@whelen.com

Installation Guide Aviation model 9020609,9020610 P/N 01-0790206-09, 01-0790206-10 Anti-Collision/LED Position Light Ass'y



TSO-C30c
& TSO-C96a
TYPES I & II
APPROVED



SPECIFICATIONS:

Nominal Operational Voltage:28 VDC
Input Current:0.3 AMP
Total Weight1.97 lbs.

EQUIPMENT LIMITATIONS:

An approved Anti-Collision / Position System consists of assembly 90206() and strobe power supply 9010104, located on each wingtip.

CONTINUED AIRWORTHINESS:

The LED position light is designed with 5 LED's. If any one LED fails, the unit must be repaired or replaced. Inspect the lens for excessive scratches or pitting. Replace if necessary.

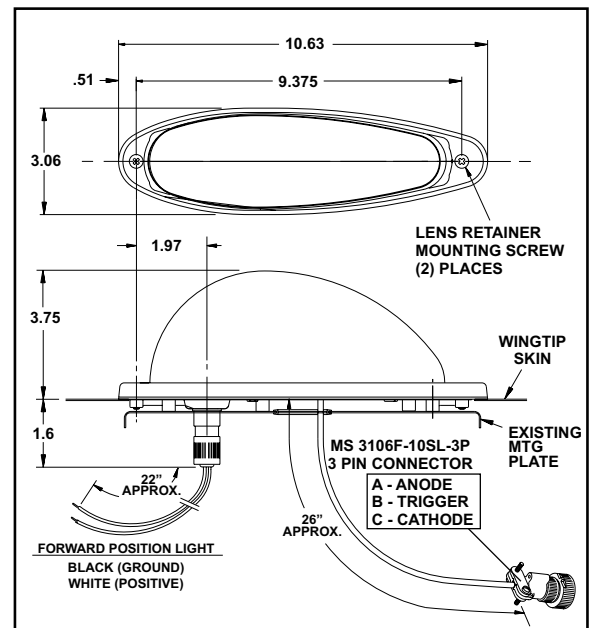
INSTALLATION PROCEDURES:

The following information is to assist you in installing a Whelen Anti-Collision / Position light system.

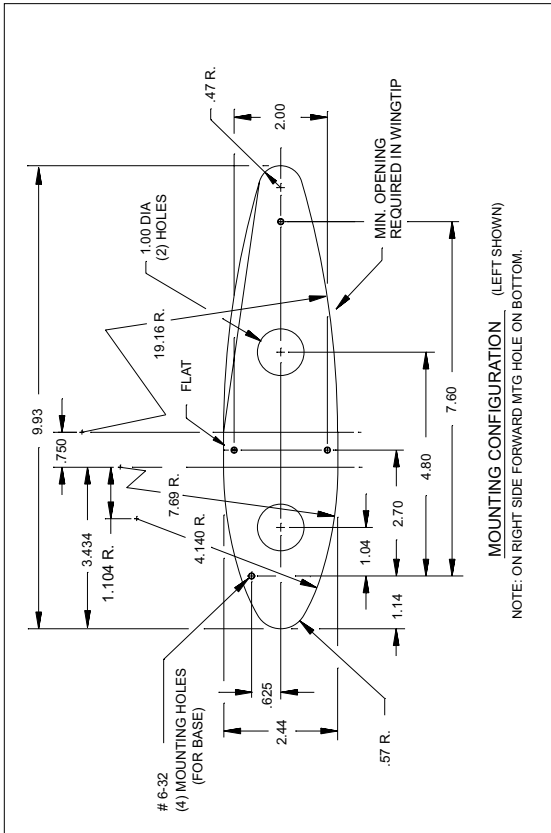
1. Choose the appropriate Model 90206 - () replacement light assembly.
2. The installation procedure described in the following text will be confined to a single light installation, but is identical for multiple light installation.
3. Remove old anti-collision light, locate and record existing +28 VDC and (-) ground position and output connector from power supply.
4. Use existing mounting holes and hardware.
5. Connect leads from light assembly in recorded manner and lead from light to power supply.
6. Breaker Requirements
Make sure existing system is equipped with an appropriate sized breaker.

The conditions and tests required for TSO approval of this article are minimum performance standards. It is the responsibility of those installing this article either on or within a specific type or class of aircraft to determine that the aircraft installation conditions are within the TSO standards. TSO articles must have separate approval for installation in aircraft. The article may be installed only if performed under 14 CFR part 43 or the applicable airworthiness requirements.

7. Install light assembly and insure that all leads are clear of any obstructions and ty-rop as required. Secure light assembly, use lock washers and/or thread lock, on all threaded fasteners.
8. Check all avionics systems for interference from this installation.
9. A flight check should be performed by a properly certified pilot.
10. When necessary, waterproof the light assembly to aircraft. Apply single part silicone (RTV) or equivalent around any open area where water could get in.
11. Update aircraft records and complete Form 337.
12. Obtain FAA field approval for installation.

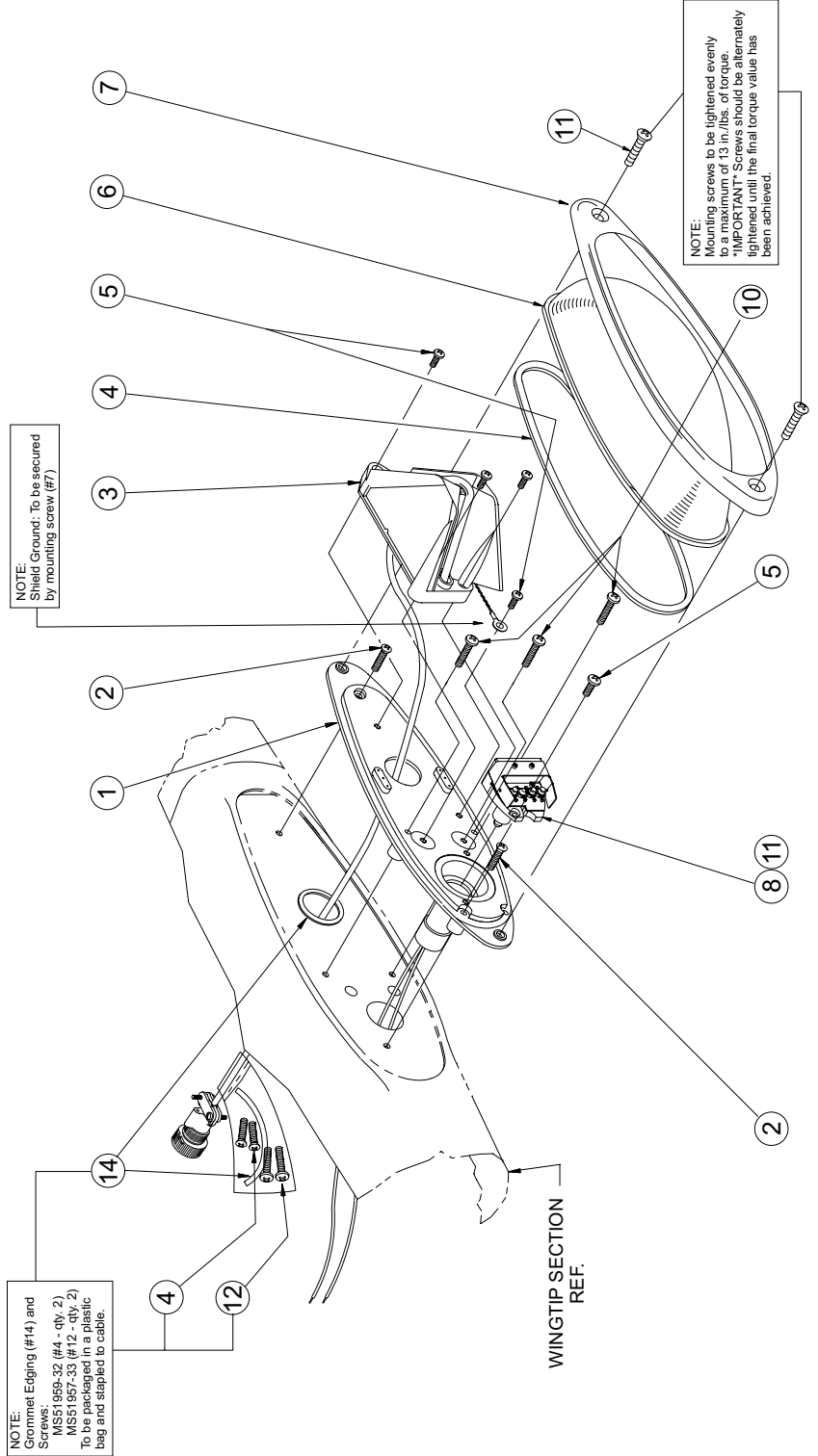


Aviation



MOUNTING CONFIGURATION (LEFT SHOWN)
NOTE: ON RIGHT SIDE FORWARD MITG HOLE ON BOTTOM.

QTY	QTY ITEM	PART NUMBER	DESCRIPTION
*		01-0790206-09	LIGHT ASSY, POS/ANTI COLL - LEFT (RED LED)
*		01-0790206-10	LIGHT ASSY, POS/ANTI COLL - RIGHT (GREEN LED)
1	1	06-170737-000	BASEPLATE ASSY, WINGTIP LIGHT
2	2	14-0050508-32	SCREW, 6-32 x 3/4 PFHSS (MS51959-32)
1	1	02-0270603-00	STROBE ASSY - WINGTIP LIGHT
1	1	38-0270590-00	GASKET, LENS
5	5	14-0050503-30	SCREW, 6-32 x 1/2 PPHMS (MS51957-30)
1	1	68-4170665-34	LENS, GLASS (RFI COATED)
1	1	19-190314-00S	RETAINER, MACHINED/POLISHED w/SEAL
-	1	01-0770970-02	7097002 RED LED FWD POSITION LIGHT
1	-	01-0770970-01	7097001 GREEN LED FWD POSITION LIGHT
3	3	14-0050503-33	SCREW, 6-32 x 7/8 PPHMS (MS51957-33)
2	2	14-0050619-67	SCREW, 10-32 x 3/4 PFHMS
1	1	21-5030903-01	GROMMET EDGING (PANDUIT #GEE62FR-C)



NOTE:
Grommet Edging (#14) and
Screws: MS51959-32 (#4 - Qty. 2),
MS51957-33 (#12 - Qty. 2)
To be packaged in a plastic
bag and stapled to cable.

NOTE:
Shield Ground: To be secured
by mounting screw (#7)

NOTE:
Mounting screws to be tightened evenly
to a maximum of 13 in./lbs. of torque.
"IMPORTANT": Screws should be alternately
tightened until the final torque value has
been achieved.