

WHELEN[®]

ENGINEERING COMPANY INC.

51 Winthrop Road
 Chester, Connecticut 06412-0684
 Phone: (860) 526-9504
 Fax: (860) 526-2009
 Internet: www.whelen.com
 Sales/Service e-mail: aviation@whelen.com

Installation Guide: 90375()-series Models 9037501 - 9037504 P/N: 01-0790375-01 through -04 LED Position Light/Strobe Assembly



*TSO-C30c
 TYPES I, II, III
 APPROVED*

*TSO-C96a
 CLASS II
 APPROVED*



The conditions and tests required for TSO approval of this article are minimum performance standards. It is the responsibility of those installing this article either on or within a specific type or class of aircraft to determine that the aircraft installation conditions are within the TSO standards. TSO articles must have separate approval for installation in aircraft. The article may be installed only if performed under 14 CFR part 43 or the applicable airworthiness requirements.

POSITION LIGHT:

Operational Voltage: 28 VDC (nominal)

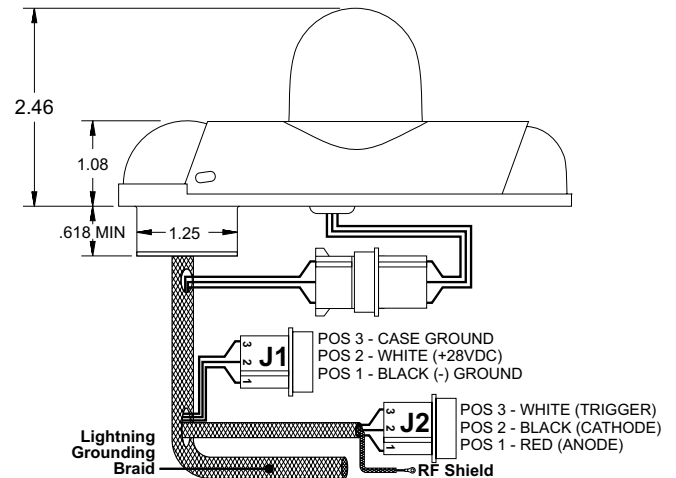
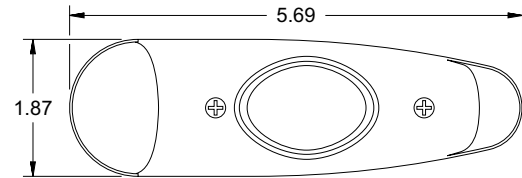
Input Current: 0.25 Amps

EQUIPMENT LIMITATIONS: An approved lighting system consists of two lights, one located on each wingtip. The baseplate must be mounted parallel to the vertical and horizontal centerlines of the aircraft to project the patterns properly. The strobe tube assembly must be connected to a strobe power supply, such as Whelen model 70888, 70879 or other approved models.

CONTINUED AIRWORTHINESS: The 90375 series LED wingtip position light assembly is designed with 3 forward LED's and two aft LED's. If any one LED fails, the unit must be repaired or replaced. Inspect the lens. Replace if there is excessive scratching, discoloration or cracking.

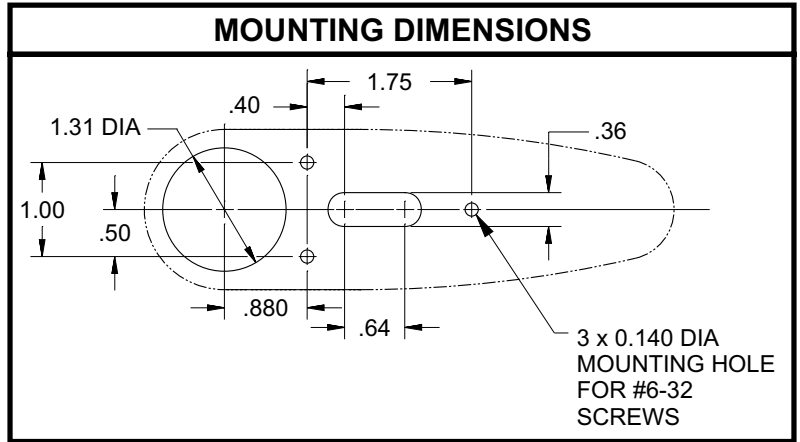
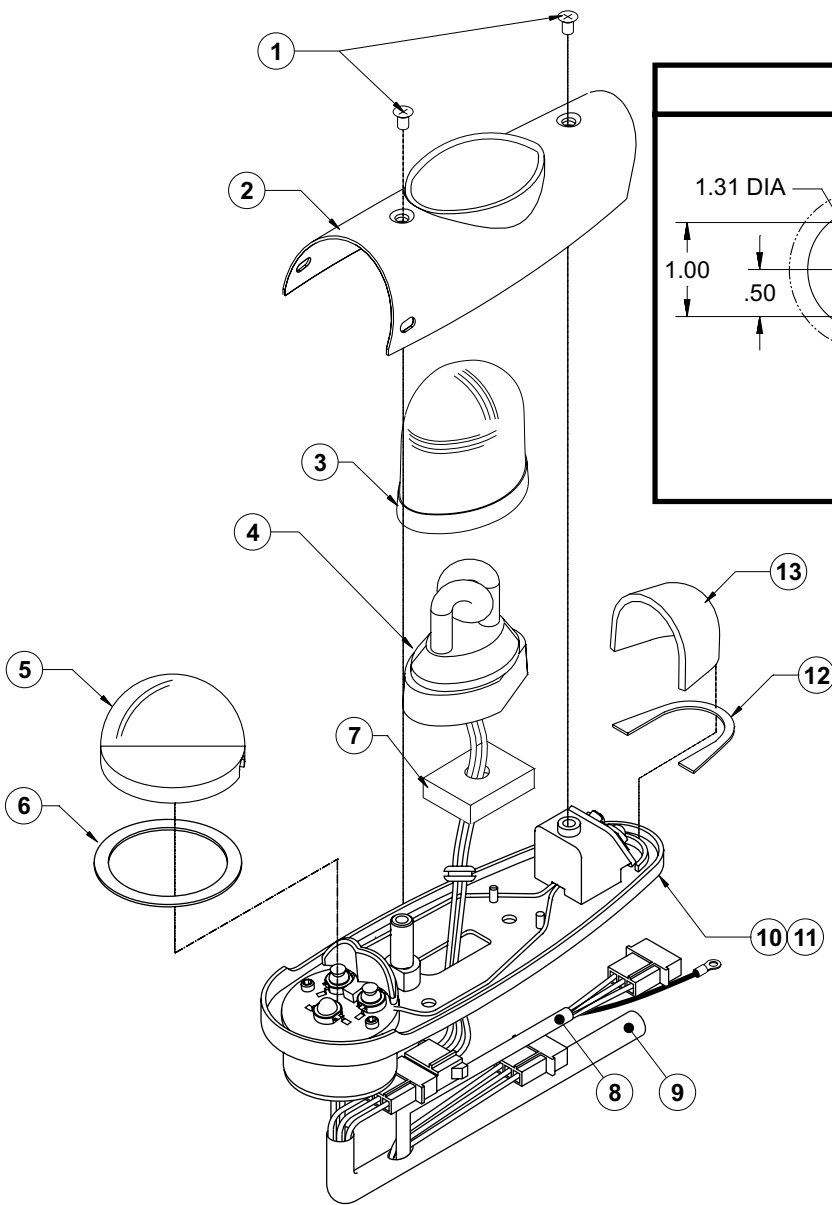
INSTALLATION PROCEDURES: The following information is to assist in the installation of a Whelen 90375 Light System.

1. Choose the appropriate 90375() series replacement light assembly.
2. The installation procedure described in the following text will be confined to a single light installation, but is identical for multiple light installations.
3. Make sure the existing system is equipped with an appropriate sized breaker. Connect the Position Light (J1) to existing mating 28VDC connector (Whelen model #A442).
4. Connect the Air Frame ground to the case ground.
5. Connect the strobe, J2, to the strobe power supply as shown in the figure. It is recommended that the RF shield be connected to the strobe power supply chassis and the lightning grounding braid be connected to the Air Frame ground.
6. Remove the retainer from the light assembly.
7. Position the base of the new light assembly onto the mounting surface. Insert three (3) #6-32 pan head



8. screws into the mounting holes (clearing the wires) and tighten firmly. Reinstall the forward position lens so that the two notches are positioned under the shroud, with each notch equidistant to the centerline of the retainer mounting post.
8. Reinstall lenses and retainer so as to clear the two internal wires.
9. Check all avionics systems for interference from the installation.
10. A flight check should be performed by a properly certified pilot.
11. Update aircraft records, complete Form 337 and obtain FAA field approval for installation, as required.

Aviation



QTY	QTY	QTY	QTY	ITEM	PART NUMBER	DESCRIPTION
			*		01-0790374-01	MODEL 9037501 FINAL ASS'Y (28V GREEN RFI)
			*		01-0790374-02	MODEL 9037502 FINAL ASS'Y (28V RED RFI)
	*				01-0790374-03	MODEL 9037503 FINAL ASS'Y (28V GREEN RFI)
*					01-0790374-04	MODEL 9037504 FINAL ASS'Y (28V RED RFI)
2	2	2	2	1	14-0050508-27	SCREW,6-32 x 5/16 PFHMS CSNK MS51959-27
1	1	1	1	2	19-170049-010	RETAINER, A600 LENS COMPLETE
1	1	1	1	3	68-2290005-34	LENS, CLEAR/COATED
1	1	1	1	4	36-0050626-03	ASS'Y, FLASHTUBE A600 SERIES
1	1	1	1	5	68-3950902A30	LENS, CLEAR FWD POSITION LIGHT
1	1	1	1	6	38-0230021-01	GASKET, POSITION LIGHT SPLIT
1	1	1	1	7	38-0130878-01	GASKET, FLASHTUBE, A600 (.375)
1	1	1	1	8	46-0771178-00	SHIELDED WIRE ASSEMBLY
1	1	1	1	9	26-2217551-58	TUBULAR BRAID, TINNED COPPER, CUT TO 36"
-	1	-	1	10	01-0290338-05	ASS'Y, ANTICOL / POS LT GRN (28V)
1	-	1	-	11	01-0290338-06	ASS'Y, ANTICOL / POS LT RED (28V)
1	1	1	1	12	38-0250901-00	GASKET, TAIL POSITION LIGHT MODEL 90340
1	1	1	1	13	68-3950903A30	LENS, CLEAR TAIL POSITION LT HARDCOAT