

WHELEN[®]

ENGINEERING COMPANY INC.

51 Winthrop Road
 Chester, Connecticut 06412-0684
 Phone: (860) 526-9504
 Fax: (860) 526-4078
 Internet: www.whelen.com
 Sales e-mail: autosale@whelen.com
 Canadian Sales e-mail: canadiansales@whelen.com
 Customer Service e-mail: custserv@whelen.com

Installation Guide:
Replacement Gasket Kit for
Lightbar(s) 01-0686608-00
01-0686608-01

This kit contains the following items:

Qty.	Description
2	Base Gaskets
2	Endcap Gaskets
4	Fastex™ Grommets

Removing the Existing Gaskets

1. Remove the four (4) Phillips-head screws securing the outer dome to the base (Fig. 1).
2. Locate and remove the existing base and endcap gaskets (Fig. 2). Note that the endcap gaskets are affixed to the endcaps with adhesive. Make sure that all gasket material is removed from the endcaps and the base in preparation for the installation of the new gaskets.
3. This kit includes new Fastex™ screw grommets. Remove all of the existing grommets and replace them with the ones contained in this kit. Be sure to orient these grommets as shown.

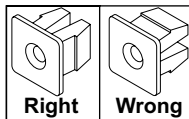
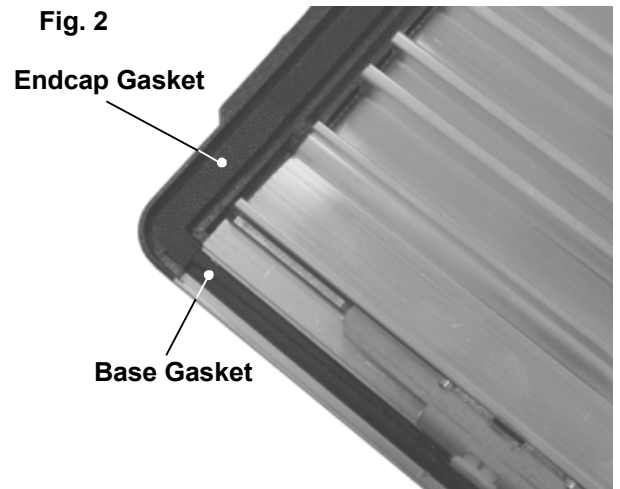


Fig. 1



Fig. 2



Installing the New Endcap Gaskets

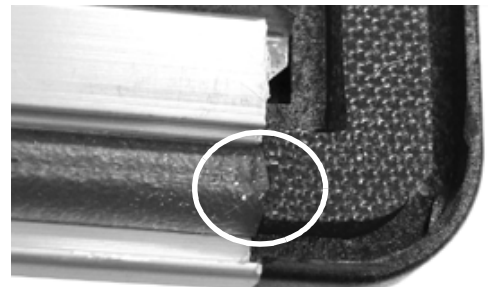
1. Remove the protective backing from the adhesive-side of the new endcap gasket.
2. Carefully position the new gasket into position, making sure that it is centered in all directions.
3. Starting from the middle of the gasket and working outwards to the gasket ends, press down on the gasket so that it adheres to the endcap.
4. Repeat steps 1 thru 3 for the remaining endcap.

Installing the New Base Gaskets

1. Lay the new base gasket onto the base gasket channel. Make sure that this gasket is centered on the base in all directions. **IMPORTANT! The Base Gasket has been cut to a specific length and should not be trimmed under any circumstances!**
2. Proper installation of the Base Gasket requires a screen repair tool or similar tool. Press the ends of the gasket into the extrusion so that they are up against the endcap gasket. Beginning in the middle and working outwards towards the gasket ends, carefully press the new base gasket down into the gasket channel. Use the screen repair tool to install the gasket fully into the channel. Remember, it is important for the ends of the base gasket to be in full contact with the endcap gasket (Fig. 3).
3. Repeat steps 1 and 2 for the remaining base gasket.
4. After all of the new gaskets have been installed, visually confirm that they are positioned and seated, as well as in full, uniform contact with their respective base and endcap surfaces.
5. Position the dome onto the base and compress the gaskets evenly by pressing on the center of the dome and applying downward pressure.
6. While maintaining this pressure, reinstall the four screws that secure the dome to the base. Tighten the screws in a criss-cross sequence. For example:

Front Left > Rear Right > Front Right > Rear Left

Fig. 3



The ends of the Base Gasket MUST be in full contact with the ends of the Endcap Gasket as shown here.