

WHELEN[®]

ENGINEERING COMPANY INC.

51 Winthrop Road
Chester, Connecticut 06412-0684
Phone: (860) 526-9504
Fax: (860) 526-4078
Internet: www.whelen.com
Sales e-mail: autosale@whelen.com
Canadian Sales e-mail: canadiansales@whelen.com
Customer Service e-mail: custserv@whelen.com

Installation Guide:
Justice[®] Lightbar
(OE Style mount and harness)

Warnings to Installers

Whelen's emergency vehicle warning devices must be properly mounted and wired in order to be effective and safe. Read and follow all of Whelen's written instructions when installing or using this device. Emergency vehicles are often operated under high speed stressful conditions which must be accounted for when installing all emergency warning devices. Controls should be placed within convenient reach of the operator so that they can operate the system without taking their eyes off the roadway. Emergency warning devices can require high electrical voltages and/or currents. Properly protect and use caution around live electrical connections. Grounding or shorting of electrical connections can cause high current arcing, which can cause personal injury and/or vehicle damage, including fire. Many electronic devices used in emergency vehicles can create or be affected by electromagnetic interference. Therefore, after installation of any electronic device it is necessary to test all electronic equipment simultaneously to insure that they operate free of interference from other components within the vehicle. Never power emergency warning equipment from the same circuit or share the same grounding circuit with radio communication equipment. All devices should be mounted in accordance with the manufacturer's instructions and securely fastened to vehicle elements of sufficient strength to withstand the forces applied to the device. Driver and/or passenger air bags (SRS) will affect the way equipment should be mounted. This device should be mounted by permanent installation and within the zones specified by the vehicle manufacturer, if any. Any device mounted in the deployment area of an air bag will damage or reduce the effectiveness of the air bag and may damage or dislodge the device. Installer must be sure that this device, its mounting hardware and electrical supply wiring does not interfere with the air bag or the SRS wiring or sensors. Mounting the unit inside the vehicle by a method other than permanent installation is not recommended as unit may become dislodged during swerving; sudden braking or collision. Failure to follow instructions can result in personal injury. Whelen assumes no liability for any loss resulting from the use of this warning device. **PROPER INSTALLATION COMBINED WITH OPERATOR TRAINING IN THE PROPER USE OF EMERGENCY WARNING DEVICES IS ESSENTIAL TO INSURE THE SAFETY OF EMERGENCY PERSONNEL AND THE PUBLIC.**

Warnings to Users

Whelen's emergency vehicle warning devices are intended to alert other operators and pedestrians to the presence and operation of emergency vehicles and personnel. However, the use of this or any other Whelen emergency warning device does not guarantee that you will have the right-of-way or that other drivers and pedestrians will properly heed an emergency warning signal. Never assume you have the right-of-way. It is your responsibility to proceed safely before entering an intersection, driving against traffic, responding at a high rate of speed, or walking on or around traffic lanes. Emergency vehicle warning devices should be tested on a daily basis to ensure that they operate properly. When in actual use, the operator must ensure that both visual and audible warnings are not blocked by vehicle components (i.e.: open trunks or compartment doors), people, vehicles, or other obstructions. It is the user's responsibility to understand and obey all laws regarding emergency warning devices. The user should be familiar with all applicable laws and regulations prior to the use of any emergency vehicle warning device. Whelen's audible warning devices are designed to project sound in a forward direction away from the vehicle occupants. However, because sustained periodic exposure to loud sounds can cause hearing loss, all audible warning devices should be installed and operated in accordance with the standards established by the National Fire Protection Association.

Safety First

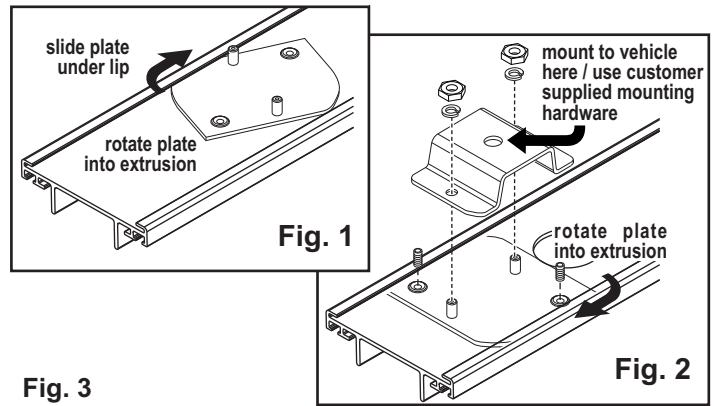
This document provides all the necessary information to allow your Whelen product to be properly and safely installed. Before beginning the installation and/or operation of your new product, the installation technician and operator must read this manual completely. Important information is contained herein that could prevent serious injury or damage.

- **Proper installation of this product requires the installer to have a good understanding of automotive electronics, systems and procedures.**
- **Whelen Engineering requires the use of waterproof butt splices and/or connectors if that connector could be exposed to moisture.**
- **Failure to use specified installation parts and/or hardware will void the product warranty.**
- **If mounting this product requires drilling holes, the installer MUST be sure that no vehicle components or other vital parts could be damaged by the drilling process. Check both sides of the mounting surface before drilling begins. Also de-burr the holes and remove any metal shards or remnants. Install grommets into all wire passage holes.**
- **If this manual states that this product may be mounted with suction cups, magnets, tape or Velcro[®], clean the mounting surface with a 50/50 mix of isopropyl alcohol and water and dry thoroughly.**
- **Do not install this product or route any wires in the deployment area of your air bag. Equipment mounted or located in the air bag deployment area will damage or reduce the effectiveness of the air bag, or become a projectile that could cause serious personal injury or death. Refer to your vehicle owner's manual for the air bag deployment area. The User/Installer assumes full responsibility to determine proper mounting location, based on providing ultimate safety to all passengers inside the vehicle.**
- **For this product to operate at optimum efficiency, a good electrical connection to chassis ground must be made. The recommended procedure requires the product ground wire to be connected directly to the NEGATIVE (-) battery post (this does not include products that use cigar power cords).**
- **If this product uses a remote device for activation or control, make sure that this device is located in an area that allows both the vehicle and the device to be operated safely in any driving condition.**
- **Do not attempt to activate or control this device in a hazardous driving situation.**
- **This product contains either strobe light(s), halogen light(s), high-intensity LEDs or a combination of these lights. Do not stare directly into these lights. Momentary blindness and/or eye damage could result.**
- **Use only soap and water to clean the outer lens. Use of other chemicals could result in premature lens cracking (crazing) and discoloration. Lenses in this condition have significantly reduced effectiveness and should be replaced immediately. Inspect and operate this product regularly to confirm its proper operation and mounting condition. Do not use a pressure washer to clean this product.**
- **It is recommended that these instructions be stored in a safe place and referred to when performing maintenance and/or reinstallation of this product.**
- **FAILURE TO FOLLOW THESE SAFETY PRECAUTIONS AND INSTRUCTIONS COULD RESULT IN DAMAGE TO THE PRODUCT OR VEHICLE AND/OR SERIOUS INJURY TO YOU AND YOUR PASSENGERS!**

IMPORTANT! The lightbar should be a minimum of 16" from any radio antennas!

Permanent Mounting:

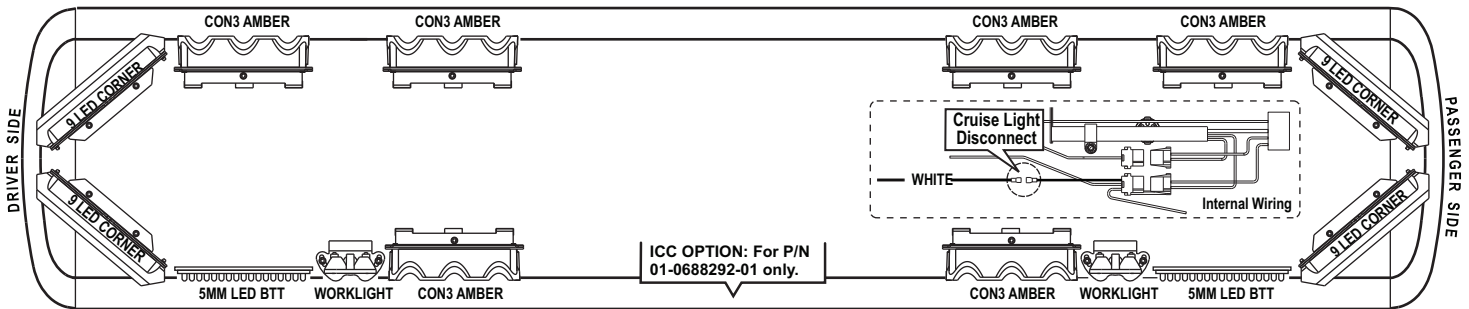
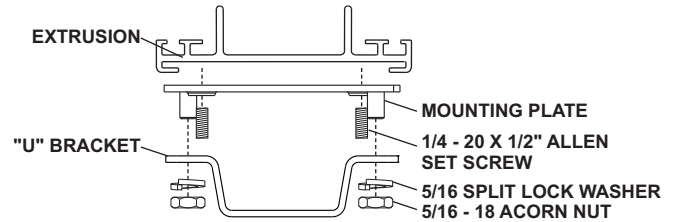
1. Flip the lightbar upside-down to expose the bottom of the extrusion and place the mounting plate onto the extrusion.
2. Rotate the mounting plate 90° in a clockwise direction. Make sure that the edges of the mounting plate swing into position under the extrusion mounting lip. (Fig. 1).
3. Slide the mounting plate to the center of the lightbar and secure it to the extrusion with the 2 supplied allen screws.
4. The "U" bracket mounts onto the mounting plate using the 2 supplied flat washers and acorn nuts. Insert the customer supplied mounting hardware into the "U" bolt, than secure the "U" bolt to the mounting.



Operation:

Plug connector into power. When lightbar is powered up it will operate in flashing mode with all lights operating.

WARNING! All customer supplied wires that connect to the positive terminal of the battery must be sized to supply at least 125% of the maximum operating current and FUSED at the battery to carry that load. DO NOT USE CIRCUIT BREAKERS WITH THIS PRODUCT!



Cruise Light disconnect wire:

The lightbar has a special wire to disengage cruise lights if desired. Access the wire as shown above. Remove the dome cover on the passenger side, pull the cruise light (WHT) wire apart at the connector. Reassemble the lightbar.

Low Power / BLUE:

The switch type used depends on how you wish Hi/Lo to function:

Latching Mode: Apply +12 VDC to the BLUE wire for less than 1 sec. to "latch" the lightbar into low power. The unit must be turned off and then back on to restore normal operation.

Level Mode: Apply +12 VDC to the BLUE wire for over 1 sec. to hold the lightbar in low power until voltage is removed.

Scan-Lock™ / BLU/BLK:

The BLU/BLK wire allows you to choose from 58 available flash patterns listed below. You must activate the function to cycle through the flash patterns and select a pattern:

To cycle forward apply +12 VDC to the BLU/BLK wire for less than 1 second and release.

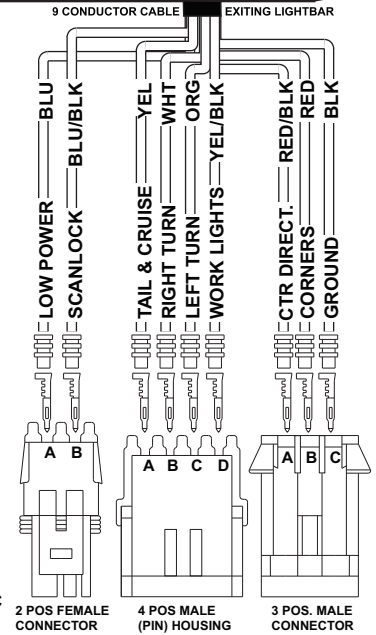
To cycle backward apply +12 VDC to the BLU/BLK wire for more than 1 second and release.

When the desired pattern is displayed, allow it to run for more than 5 seconds. The lighththead will now display this pattern when activated.

TO RESET TO THE FACTORY DEFAULT PATTERN:

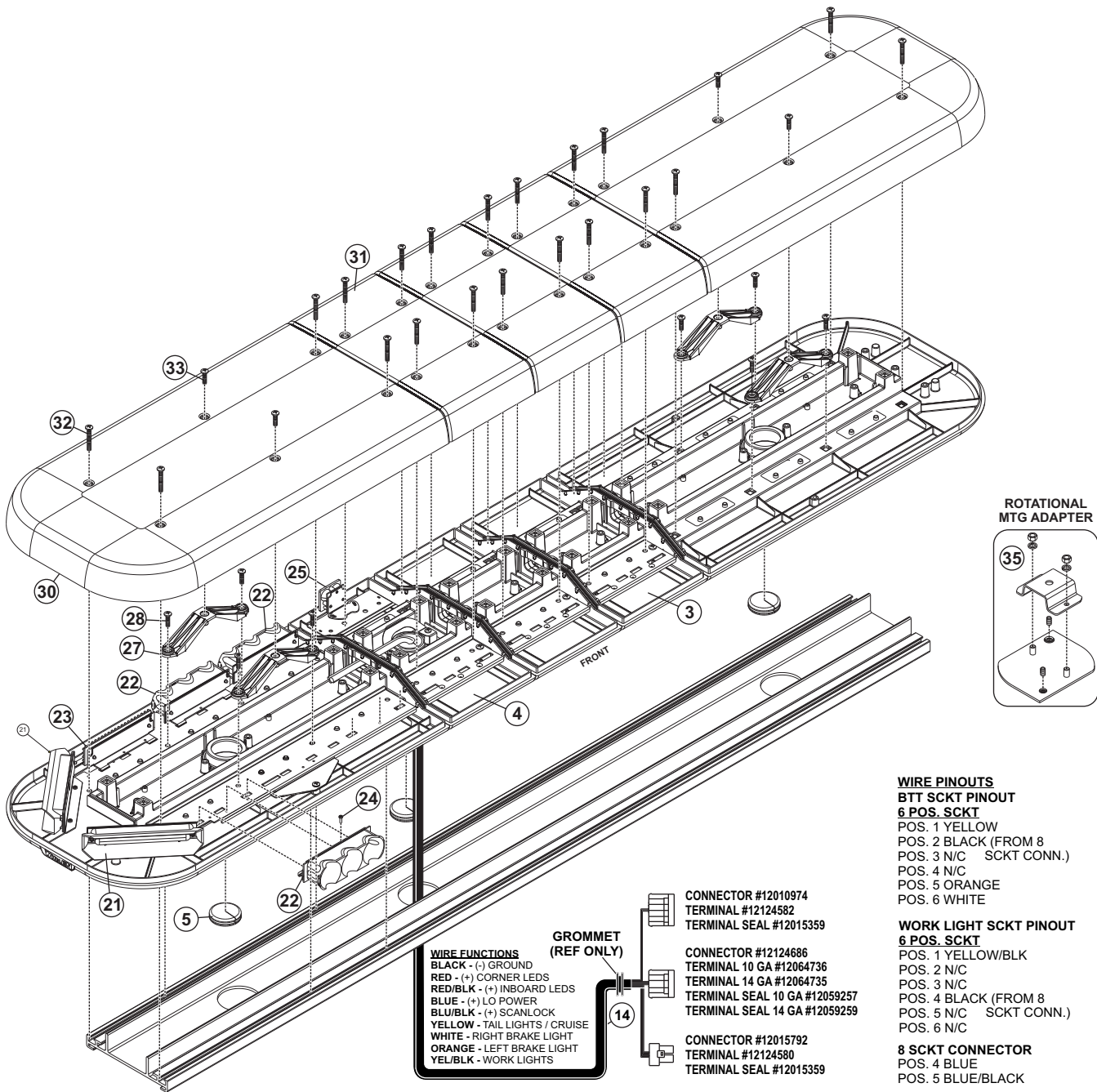
With power off, apply +12 VDC to BLU/BLK wire while turning power on.

- | | | | |
|--------------------------------|--------------------------------|---------------------------------|---------------------------------|
| 1. SignalAlert™ L/R - SYNC | 18. SingleFlash 75 IN/OUT | 35. SingleFlash 90 ALT/SIM | 52. PingPong™ IN/OUT |
| 2. SignalAlert™ L/R - ASYNC | 19. SingleFlash 75 SIM | 36. SingleFlash 120 L/R - SYNC | 53. PingPong™ SIM |
| 3. SignalAlert™ IN/OUT | 20. SingleFlash 75 ALT/SIM | 37. SingleFlash 120 L/R - ASYNC | 54. ModuFlash™ L/R - SYNC |
| 4. SignalAlert™ SIM | 21. LongBurst™ L/R - SYNC | 38. SingleFlash 120 IN/OUT | 55. ModuFlash™ L/R - ASYNC |
| 5. SignalAlert™ ALT/SIM | 22. LongBurst™ L/R - ASYNC | 39. SingleFlash 120 SIM | 56. ModuFlash™ IN/OUT |
| 6. CometFlash® L/R - SYNC | 23. LongBurst™ IN/OUT | 40. SingleFlash 120 ALT/SIM | 57. ModuFlash™ SIM |
| 7. CometFlash® L/R - ASYNC | 24. LongBurst™ SIM | 41. SingleFlash 240 L/R - SYNC | 58. ActionScan™ Default Pattern |
| 8. CometFlash® IN/OUT | 25. LongBurst™ ALT/SIM | 42. SingleFlash 240 L/R - ASYNC | |
| 9. CometFlash® SIM | 26. SingleFlash 60 L/R - SYNC | 43. SingleFlash 240 IN/OUT | |
| 10. CometFlash® ALT/SIM | 27. SingleFlash 60 L/R - ASYNC | 44. SingleFlash 240 SIM | |
| 11. DoubleFlash 75 L/R - SYNC | 28. SingleFlash 60 IN/OUT | 45. SingleFlash 240 ALT/SIM | |
| 12. DoubleFlash 75 L/R - ASYNC | 29. SingleFlash 60 SIM | 46. ActionFlash™ L/R - SYNC | |
| 13. DoubleFlash 75 IN/OUT | 30. SingleFlash 60 ALT/SIM | 47. ActionFlash™ L/R - ASYNC | |
| 14. DoubleFlash 75 SIM | 31. SingleFlash 90 L/R - SYNC | 48. ActionFlash™ IN/OUT | |
| 15. DoubleFlash 75 ALT/SIM | 32. SingleFlash 90 L/R - ASYNC | 49. ActionFlash™ SIM | |
| 16. SingleFlash 75 L/R - SYNC | 33. SingleFlash 90 IN/OUT | 50. PingPong™ L/R - SYNC | |
| 17. SingleFlash 75 L/R - ASYNC | 34. SingleFlash 90 SIM | 51. PingPong™ L/R - ASYNC | |



Flash Pattern Phases:

- L/R - SYNC = Left / Right - Synchronous
- L/R - ASYNC = Left / Right - Asynchronous
- IN/OUT = In / Out
- SIM = Simultaneous
- ALT/SIM = Alternating / Simultaneous



QTY	QTY	ITEM	PART NUMBER	DESCRIPTION
	*		01-0688292-00	LIGHTBAR ASSY, JUSTICE 62.375"WRECKER, JERR DAN MTG
*			01-0688292-01	LTBAR, JUSTICE 62.375"WRECKER / ICC CLUSTER, JERR DAN MTG
1	1	1	11-36H355-054	BASE, EXTRUSION 54.250" MACHINED JERR-DAN JUSTICE
2	2	2	02-0384840-90	BASE / LENS END, W/SEAL, BLACK
-	2	3	02-0384841-90	BASE / LENS CENTER MODULE, W/SEAL, BLACK
-	1	4	02-0384841-91	ASSY, LENS BASE CENTER BLACK W/HOLE W/SEAL JUSTICE SERIES
3	3	5	21-11245004-1	GROMMET, 1.562"
4	4	6	38-0443429-30	DIVIDER BRIDGE, (CLEAR) JUSTICE LIGHTBAR
4	4	7	38-0464988-00	SEAL DIVIDER, JUSTICE LIGHTBAR
48	48	8	21-17060704-3	GROMMET, ITW FASTEX PLASTI
2	2	9	07-284976-000	BRACKET, MTG., LIGHTHEAD ASSEMBLIES
4	4	10	07-243540-000	BRACKET, BASE CENTER MODULE, JUSTICE
20	20	11	15-101416-080	SCREW, 10 x 1/2" PPHSMS 410 SS
1	1	12	02-016D183-00	ASSY, PCB HC I/O BOARD LTBAR
2	2	13	15-045410-060	SCREW, 4 X 3/8" PPH PLASTITE 48-2 SS 410 BLK OXIDE
1	1	14	46-076D466-01	ASSY, CABLE 9/C 12.5' JERR-DAN
1	1	15	07-26A018-000	BRACKET, SUPPORT, WE-CAN PCB, JUSTICE
1	1	16	26-0215001-06	TY WRAP, 6" BLACK
2	2	17	39-0406324-04	HOUSING, 6 POS. SOCKET
2	2	18	46-0788324-00	ASSY, HARNESS JERR-DAN MOUNT JUSTICE WRECKER
1	1	19	46-076D241-00	ASSY, HARNESS B/T/T LTS W/DOT JERR-DAN
1	1	20	46-0764440-01	ASSY, HARNESS TAKE-DOWN/WORK ECON LIBERTY/FREEDOM
4	4	21	01-026B704-19	SUB ASSY, 9 LED CORNER AMBER JUSTICE

6	6	22	01-026B568-10	SUB ASSY, CON3 HINGE PCAAMP
2	2	23	01-026A332-00	SUB ASSY, 5MM LED BTT 3-WIRE JUSTICE
16	16	24	14-040285-063	SCREW, 4-40x3/8 TORX PH, TRILOBULAR BLACK
2	2	25	01-026A753-01	SUB ASSY, LR11 CTR TAKEDOWN WHT JUSTICE
A/R	A/R	26	26-0215001-03	TY WRAP, 3" BLACK
4	4	27	07-26A993-000	BRACKET, DOME MOUNT JUSTICE
8	8	28	15-101416-100	SCREW, 10 x 5/8 PPHSMS 410 SS
1	1	29	10-0523364-00	LABEL, JUSTICE INSIDE ID, M/N, S/N
2	2	30	68-1984693-30	DOME, END, OPTIC LENS, CLEAR
3	3	31	68-1984695-30	DOME, CENTER MODULE, OPTIC LENS, CLEAR
20	20	32	15-101416-288	SCREW, 10 X 1 3/4 PPHSMS 410 SS, W/INSEAL
4	4	33	15-101416-108	SCREW, 10 X 5/8 PPHSMS 410 SS, W/INSEAL
1	1	34	10-0322935-00	LABEL, "FRONT"
2	2	35	01-046B474-00	KIT, ROTATIONAL MTG ADAPTER JERR-DAN
2	-	36	02-036H378-90	ASSY, LENS BASE CENTER W/SEAL & ICC CLUSTER HOLE, JUSTICE
1	-	37	02-036H378-91	ASSY, LENS BASE CENTER W/ CABLE ENTRY W/SEAL & ICC CLUSTER HOLE, JUSTICE
1	-	38	21-11040802-0	GROMMET, 1/8 ID 11/32 OD 3/16 RUBBER
1	-	39	46-076C720-00	ASSY, HARNESS ICC ASSY JERR-DAN
1	-	40	02-036H379-50	SUB ASSY, ICC LIGHT CLUSTER, JUSTICE WRECKER
2	-	41	14-102216-080	SCREW, 10-32 X 1/2 PPHMS SS
2	-	42	16-1021220-45	WASHER, #10 INT TOOTH LOCK STAINLESS STEEL
2	-	43	16-1001220-06	WASHER, #10 FLAT 18-8 SS
1	-	44	39-0402313-04	HOUSING, 2 POS PIN COMM MATE-N-LOK