

4500

Build-a-Bar Series

WHELEN®



NEW →
ROTA-BEAM™
SUPER-LED® SOLID-STATE
ROTATING MODULE.
NO MOVING PARTS!



4500 Build-a-Bar™ Series

Combination Super-LED®, Strobe and Halogen flush mounted lightbars

Flush mounted extrusions are available with or without ICC lights, in lengths starting at 22”.

The Build-a-Bar Series can be equipped with your choice of Linear or Super-LED modules, strobe and halogen lightheads to meet KKK-1822F primary lighting specifications or secondary lighting requirements.

Use the Lightbar WeCad™ program available on our Website and it's easier than ever to create a custom lightbar built exactly to your specs.

- 700 Series Halogen or Linear Strobe, and 700 or 400 Series Linear Super-LED® provides exceptional light output and reliability.
- 4-13/16” high by 5-1/4” deep with a rugged extruded aluminum housing that will not sag or warp. Even lengths in 2” increments from 22” to 90” are available.
- Slide bolt mounting simplifies installation, front mounted lenses and quick mount lightheads allow easy access to the interior of the bar for quick service or replacement.
- Halogen rotators feature dual ball bearing design, state-of-the-art optics and are backed by a three-year warranty.
- **NEW** ROTA-BEAM™ Super-LED solid-state rotating module available for new production builds. Also retrofits in place of halogen rotators. 16 Scan-Lock™ flash patterns inside module. Absolutely no moving parts.
- Super-LED modules provide long life performance with low amp draw.
- All LED lightheads have a five-year warranty.
- Pre-configured interior light packages meet KKK-1822F requirements.
- WeCad™ program allows you to build the exact lightbar you require using easy “drag and drop” software. Graphic representation shows you how your lightbar is configured before you place your order.
- Optional LED ICC lights, amber front or red rear, meet SAE J592 and J2042 requirements.
- Rear center LED clearance light has a third brake light to meet SAE J1957.
- Model 45LRLOAD LR LED Load Lights replace the standard 700 Series Halogen. This high intensity LED option producing 3600 lumens, has three LR modules mounted at specific angles (6 total) to give superior illumination at both tread plate and loading area.
- Traffic Advisors™ available with six or eight 400 Series Linear-LEDs and come with a 35 foot cable and control head.

Choose a pre-configured lightbar or build your own with multiple configuration choices.



A-LA-CARTE LIGHTBAR OPTIONS

Start with a heavy-duty aluminum housing in your choice of lengths, then add the lighting options you need with a wide variety of easy to configure modules.



Extruded Aluminum Housing

NEW



ROTA-BEAM Super-LED®
Solid-State Rotating Module



700 Series Linear-LED®



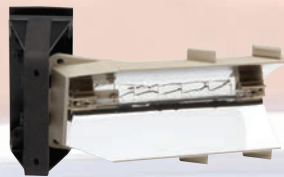
700 Series Halogen



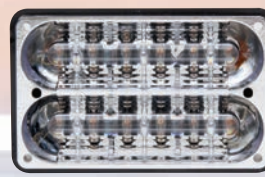
700 Series Linear Strobe



Angled Linear-LED Corner



Angled Strobe Corner



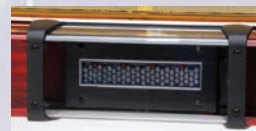
400 Series Linear-LED



Halogen Rotator



700 Series Load Light (standard)

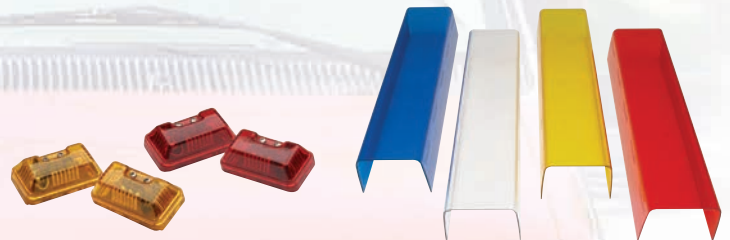


GTT Opticom™ Emitter 795H



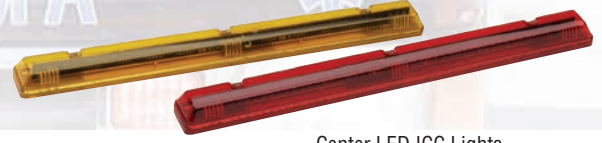
LR11 Load Light

Model	VDC	Amp Draw
700 Strobe	12.8	See Power Supply
Corner Strobe		See Power Supply
700 Halogen/Flashing		5 A
700 Linear-LED		1.5 A
700 Load Lights		4.9 A
400 Linear-Led		1.5 A
Corner Linear-LED		1.5 A
LR11 Load Light		4.5 A
LED ICC Light (End)		25 MA
LED ICC Light (Center)		50 MA
LED ICC Light (Center 3rd B/T/T)		150 MA
Halogen Rotator		3.5 A
ROTA-BEAM		3.5 A



End LED ICC Lights

Color Lenses



Center LED ICC Lights

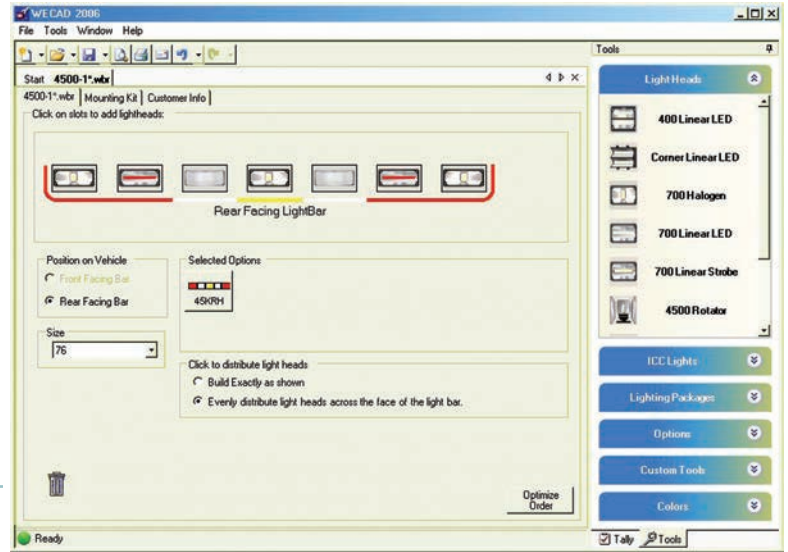


BUILD-A-BAR

Building your lightbar is easy with Whelen's 4500 Build-a-Bar WeCad™ program!

Just go to www.whelen.com/eng_apps/index.php, and download "WeCad Lightbar Designer". The WeCad Program will prompt you as to how many and which modules may be used together, along with a suggested retail price as you go.

1. Choose front or rear facing bar, and length.
2. Add ICC light if desired.
3. Choose Linear-LED or 4500 Plus light modules.
4. Follow menu prompts to select light module and color options, drag and drop for position.



4500 Series Base

- 45B5252" long
- 45B52*52" long, with center-mounted LED ICC lights
- 45B±±±± Insert length 60", 72" or 76" long
- 45B±±*±± Insert length 60", 72" or 76" long, with center-mounted LED ICC lights
- 45B±±±± Insert length 82", 84", 86", 88" or 90" long
- 45B±±*±± Insert length 82", 84", 86", 88" or 90" long, with LED ICC lights

Pre-configured KKK Approved Packages

4500 Build-a-Bar

- 45KFSInterior KKK front strobe lighting package, includes three strobes
- 45KRSInterior KKK rear strobe lighting package, includes three strobes and two load lights
- 45KFHInterior KKK front halogen lighting package, includes three halogen modules
- 45KRHInterior KKK rear halogen lighting package, includes three halogen modules and two load lights

4500 Plus Super-LED® Build-a-Bar

- 45KFLInterior KKK front Super-LED lighting package, includes two corner Red, two 400 Series Red and two 400 Series White Linear-LEDs
- 45KRLInterior KKK rear Super-LED lighting package, includes two corner Red, two 400 Series Red, two 400 Series Amber Linear-LEDs and halogen load lights

Options To Complete Your Lightbar

4500 Plus Build-a-Bar

- 45LRLOADAdd a pair of triple (6 LR11s total) LR11 Super-LED load lights (replaces 45MRLOAD)
- 45ADRB***NEW** ROTA-BEAM Super-LED solid-state rotating module, Red, Blue, Amber, or White
- 45ALOADAdd two load lights
- 45DLOUTADelete outboard two Amber ICC lights only
- 45DLOUTRDelete outboard two Red ICC lights only
- 45DLCNTADelete center Amber ICC light only
- 45DLCNTRDelete center Red ICC light only
- 45ADDDHALAdd one 700 Series halogen lighthead
- 45ADDDSTRAdd one 700 Series strobe lighthead
- 45ADDDASTAdd one outboard angled strobe lighthead
- 45ADROTAAdd one halogen rotator
- 45ADL8*Add one single color 700 Series Super-LED lighthead (flashing) Red, Blue or Amber
- 45ADLS8*Add one single color 700 Series Super-LED lighthead (steady), Amber, Blue, Red or White (flasher purchased separately)
- 45ADL8*Add one single color 700 Series Super-LED lighthead (flashing), Red, Blue or Amber
- 45ADLS8*Add one single color 700 Series Super-LED lighthead (steady), Amber, Blue, Red or White (flasher purchased separately)
- 795HGTT self-contained LED IR Opticom Emitter
- 45795HInstallation of 795H in a 4500 Series lightbar

4500 Plus Super-LED Build-a-Bar

- 45DLOUTADelete outboard two Amber ICC lights only
- 45DLOUTRDelete outboard two Red ICC lights only
- 45DLCNTADelete center Amber ICC light only
- 45DLCNTRDelete center Red ICC light only
- 45ADRB***NEW** ROTA-BEAM™ Super-LED solid-state rotating module, Red, Blue, Amber, or White
- 45CL*Add one single color corner Linear-LED' lighthead, Amber, Blue, Red or White
- 45FL*Add one single color 400 Series Linear-LED' lighthead, Amber, Blue, Red or White
- 45LFLASHAdd one internal flasher & harness only, for up to four 400 or 700 Series Linear-LED Super-LED lightheads
- 45TASuper-LED Traffic Advisor™ and halogen load light upgrade, for use with 4500 Series 82" or larger
- 795HGTT self-contained LED IR Opticom™ Emitter
- 45795HInstallation of 795H in a 4500 Series lightbar

* Replace symbol in model number with letter indicating color desired
A = Amber; B = Blue; R = Red; W = White

