



WHELEN AEROSPACE TECHNOLOGIES

Phone: (860) 526-9504  
Fax: (860) 526-2009  
Internet: www.flyWAT.com  
Sales/Service e-mail: info@flyWAT.com

**Installation Guide/ICA:  
Aviation model(s): 9040001,02,03,04,21,22  
P/N: 01-0790400-01, -02, -03, -04, -21, -22  
LED Position/Anti-Collision/Tail Light Ass'y**

TSO-C30c TYPE I, II & III APPROVED  
TSO-C96a CLASS II APPROVED

The conditions and tests required for TSO approval of this article are minimum performance standards. Those installing this article either on or within a specific type or class of aircraft must determine that the aircraft installation conditions are within the TSO standards which include any accepted integrated non-TSO functions. TSO articles and any accepted integrated non-TSO function(s) must have separate approval for installation in an aircraft. The article may be installed only according to 14 CFR part 43 or the applicable airworthiness requirements.

**SPECIFICATIONS:**

**Nominal Operational Voltage:**..... 14VDC / 28VDC  
(14V Operation from 11V - 16V / 28V Operation from 22V - 32V)  
**Input Current:**  
LED Forward Position Light ..... 0.25 Amps (Red)  
0.21 Amps (Green)  
LED Anti-Collision Light (Pulse@0.25 sec) 7.2 Amps/4 Amps  
LED Anti-Collision Light (Average) ..... 1.3 Amps/0.75 Amps  
LED Tail Position Light ..... 0.25 Amps/0.25 Amps  
**Flashrate:** ..... 45± 5 per min.  
**Total Weight:** ..... 1.0 lbs.

**EQUIPMENT LIMITATIONS:** An approved lighting system consists of two lights, one located on each wingtip. The baseplate must be mounted parallel to the vertical and horizontal centerlines of the aircraft to project the patterns properly. A separate flasher unit is required per light. NOTE: Certain types of installations may require additional testing.

**AIRWORTHINESS LIMITATIONS:** The Airworthiness Limitations section is FAA approved and specifies inspections and other maintenance required under §43.16 and §91.403 of the Federal Aviation Regulations, unless an alternative program has been approved.

No airworthiness limitations are associated with the installation of the light assembly.

**CONTINUED AIRWORTHINESS:** The forward position light is designed with 3 LED's. The tail position light is designed with 3 LED's. The Anti-Collision light is designed with 26 LED's. If any one LED fails, the unit must be repaired or replaced. Inspect the lens. Replace if there is excessive scratching, pitting, discoloration or cracking. For additional lens maintenance detail, see SAE ARP5637. **Note:** To reduce eye strain, use an optical filter such as dark glasses or a blue covering dome during LED inspection.

**Note:** The anti-collision light will automatically shut-off after 9-10 flashes if a failure is detected.

**PERIODIC INSPECTIONS:** An annual inspection shall be performed unless the OEM specifies a shorter interval.

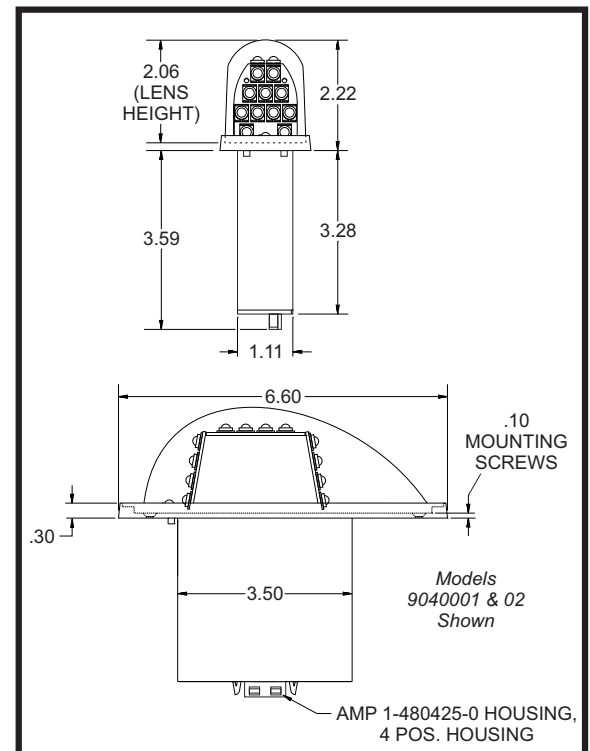
**INSTALLATION PROCEDURES:** The following information is to assist you in installing a Whelen Anti-Collision / Position light system.

1. Choose the appropriate Model 90400( ) replacement light assembly.
2. Connect the anti-collision inputs and the position light inputs according to the chart shown. Connections to be in accordance with FAA approved methods.

3. Using appropriate hardware, install light assembly and insure that all leads are clear of any obstructions and ty-rap as required. Secure light assembly, using vibration resistant threaded fasteners.

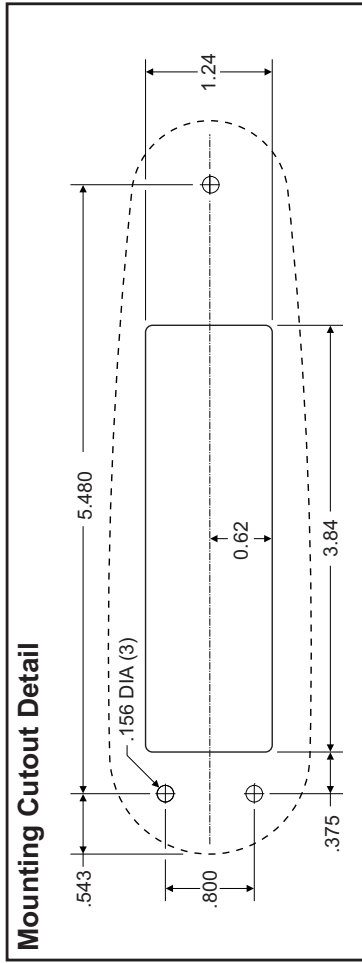
**CAUTION!** Do not touch the LEDs with either fingers or sharp objects. This could soil or damage the LEDs and effect the optical performance of the light.

4. Reinstall the lens.
5. Check all avionics systems for interference from this installation.
6. A flight check should be performed by a properly certified pilot.
7. When necessary, waterproof the light base to aircraft. Apply single part silicone (RTV) or equivalent around any open area where water could get in.
8. If required, update aircraft records utilizing FAA Field Approval (Form 337) or equivalent.



Aviation

QTY	QTY	QTY	QTY	QTY	ITEM	PART NUMBER	DESCRIPTION
				*		01-0790400-01	ASSY, GREEN LED 14V, MODEL 9040001
				*		01-0790400-02	ASSY, RED LED 14V, MODEL 9040002
		*				01-0790400-03	ASSY, GREEN LED 14V, MODEL 9040003
	*					01-0790400-04	ASSY, RED LED 14V, MODEL 9040004
*						01-0790400-21	ASSY, GREEN LED 28V, MODEL 9040021
*						01-0790400-22	ASSY, RED LED 28V, MODEL 9040022
-	-	-	-	1	1		ASSY, GREEN MODULE
-	-	-	-	2	2		ASSY, RED MODULE
-	-	-	-	3	3		ASSY, GREEN MODULE
-	-	-	-	4	4		ASSY, RED MODULE
-	-	-	-	5	5		ASSY, GREEN MODULE
-	-	-	-	6	6		ASSY, RED MODULE
1	1	1	1	7	38-0290430-00	GASKET, LENS	
1	1	1	1	8	68-3990413A30	LENS, PLASTIC, CLEAR HARD COAT	
1	1	1	1	9	19-150941-000	RETAINER, TAIL	
4	4	4	4	10	14-040116-04P	SCREW, 4-40 X 1/4 PFH 82 CSNK	
1	1	1	1	11	19-150940-000	RETAINER, FORWARD	



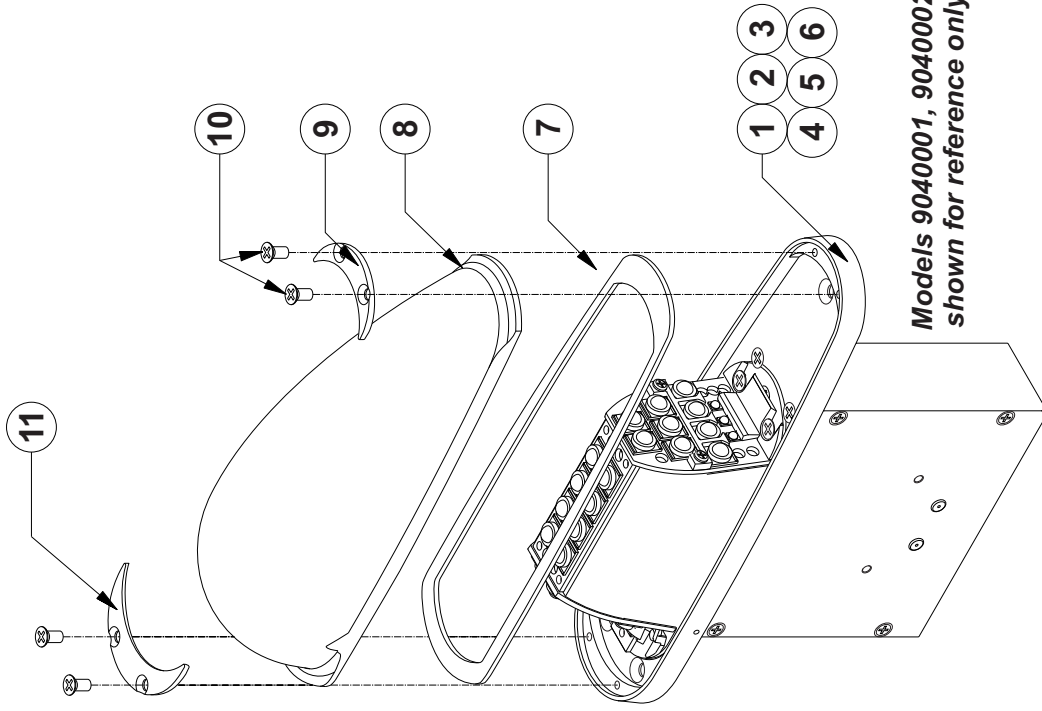
### Wiring Pinouts by Model

Models:  
9040001 9040003  
9040002 9040004

Position	14V	Pin 1
Anti-Collision	14V	Pin 2
SYNC*		Pin 3
GROUND		Pin 4

Models:  
9040021  
9040022

Position	28V	White
Anti-Collision	28V	Orange
SYNC*		Yellow
GROUND		Black



Models 9040001, 9040002  
shown for reference only

\* Note: SYNC is a low-power, bi-directional control signal. Connecting to the synchronize signal of any Whelen anti-collision assembly will cause the lights to flash at the same time. If synchronization is not necessary, the connection may be left open.