

Model 90088 Series LED Anti-Collision Light



Whelen Aviation Division is proud to announce the introduction of Model 90088 LED Anti-Collision Lights to its family of aviation safety lighting products.

The 90088 is designed as a high quality, long lasting, modern alternative to existing anti-collision lights. Also, the 90088 offers significant technological upgrades over previous products. Utilizing LED (Light Emitting Diode) technology, Whelen is able to provide the following advantages which significantly **reduce operating costs**.

FEATURES

- **Long Life** - The solid-state LED light source has shown conservative lab life results of greater than 20,000 hours
- **Vibration Resistant** - distinct benefits are:
 - a) The LED light source does not have a fragile filament like a lamp, or a gas filled glass envelope like a strobe flash tube
 - b) There are no heavy capacitors or transformers associated with strobe power supplies
- **RFI - No EMI or RFI Interference**
- **Lower Power** - Average current draw is 0.45 Amps @ 28V. No inrush current that is inherent with strobe power supplies and halogen flashers
- **Visibility** - The LED approach yields the "best of both worlds". Crisp on and off cycles compared to a halogen or oscillator, and longer on time compared to a strobe
- **Mounting** - Units will mount using existing mounting configuration without altering aircraft
- **FAA TSO-C96a Class III Approved**

SPECIFICATIONS*

Lamp:

LED (Light Emitting Diode)

Input Voltage:

28 VDC Nominal

Input Current:

0.45 Amps Average

LED Color:

Aviation Red

Approx. Life:

20,000 Hours

Weight:

1.8 Lbs. nom.

Model Number:

90088()

Part Number:

01-0790088-()

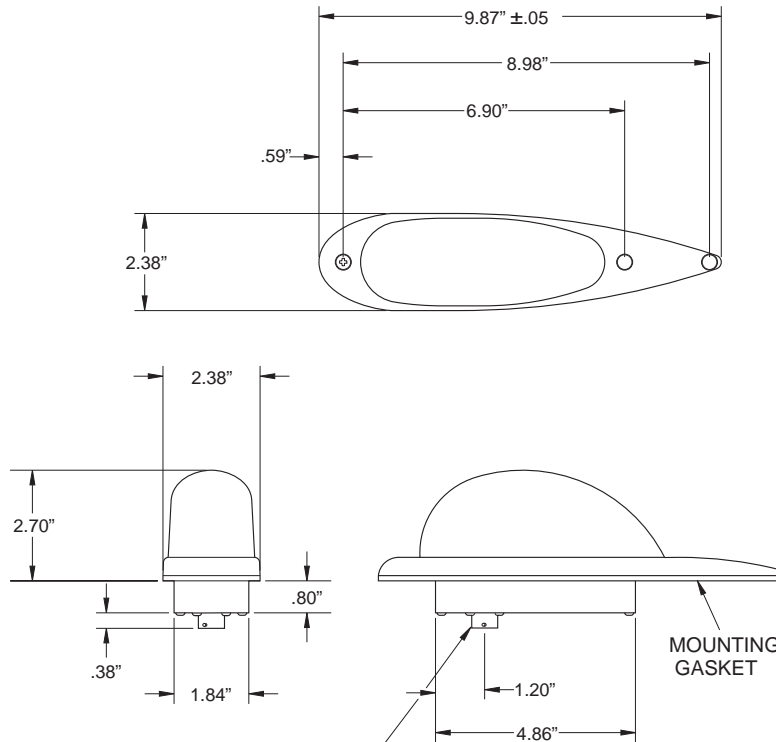
* For Custom Design Applications, Contact Factory.

WHELEN®

Route 145, Winthrop Road
Chester, CT 06412
(860) 526-9504 • Fax: (860) 526-2009
aviation@whelen.com
www.whelen.com

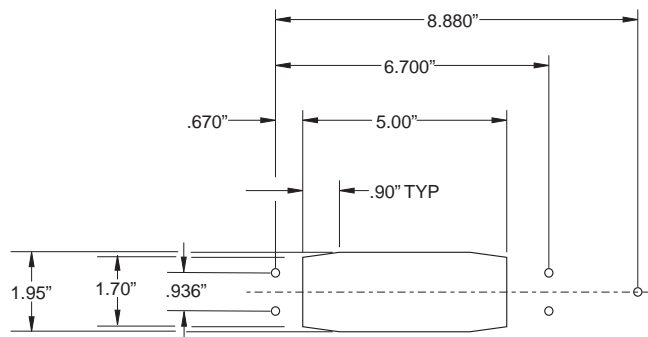


*Designed &
Manufactured
in the U.S.A.*



INPUT

RECEPTACLE - MS27508E10A-5P
 POS A - +28VDC
 POS B - GROUND
 POS C -
 POS D -
 POS E



**SUGGESTED MOUNTING PLAN
 (5) HOLE PATTERN**

NOTES:

1. Model 90088 Specifications:

Input Voltage: 28VDC Nominal
Input Current: 0.45 Amps Average
 2.7 Amps Peak @ .25 Seconds
Light source: Light Emitting Diode (LED)
Color: Red
Lens: Clear Borosilicate (Tempered Glass).
Flashrate: 45 ±5 Per Minute (Single Flash)
Weight: 1.8 Lbs. Nominal.

2. Units comply with the following environmental test Requirements in accordance with RTCA/DO-160d:

Temperature/Altitude: Section 4, Category F2
Temperature Variation: Section 5, Category A
Humidity: Section 6, Category C
Operational Shock: Section 7, Category A
Vibration: Section 8, Category T, Curves E, E1, P
Waterproofness: Section 10, Category S
Magnetics Effects: Section 15, Category A
Power Input: Section 16, Category B, Para. 16.5.2, 16.5.4
Voltage Spike: Section 17, Category B
Audio Freq. Conducted Susceptibility: Section 18, Category B
Induced Signal Susceptibility: Section 19, Category A, Para. 19.3.1
Radiated and Conducted Susceptibility: Section 20, Cat. T
Radiated and Conducted Emissions: Section 21, Category H
Lightning: Section 22, A1XX

WHELEN[®]

Route 145, Winthrop Road
 Chester, CT 06412
 (860) 526-9504 • Fax: (860) 526-2009
 aviation@whelen.com
 www.whelen.com



*Designed &
 Manufactured
 in the U.S.A.*