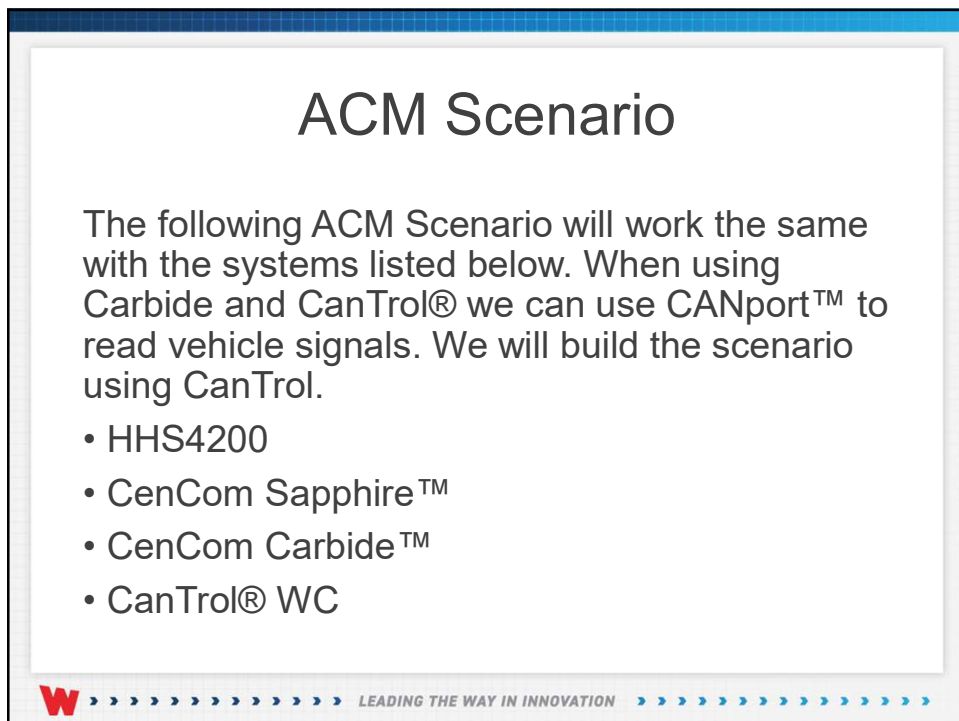


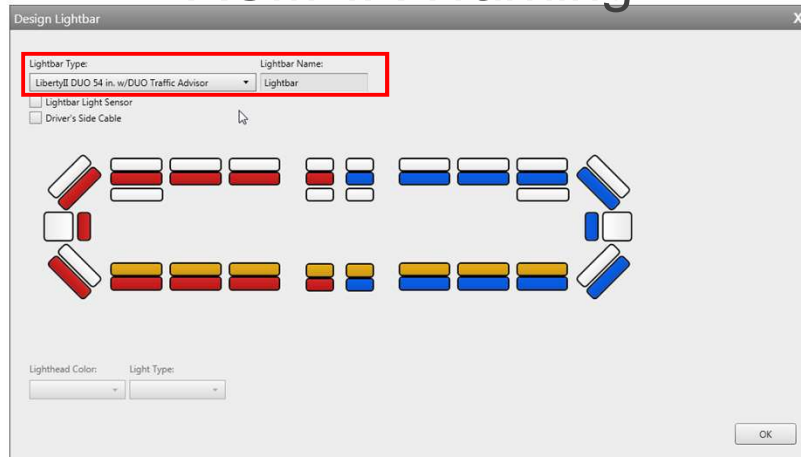


2



3

ACM TA Warning



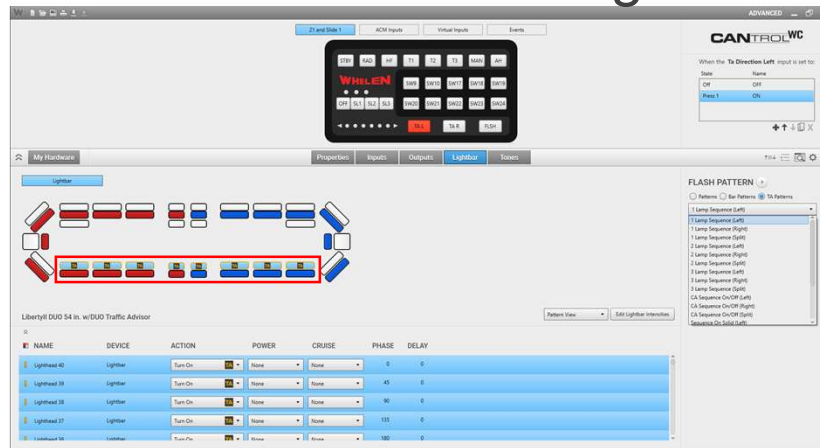
The lightbar we are using is the **Liberty II Duo 54in. w/Duo Traffic Advisor**



LEADING THE WAY IN INNOVATION

4

ACM TA Warning



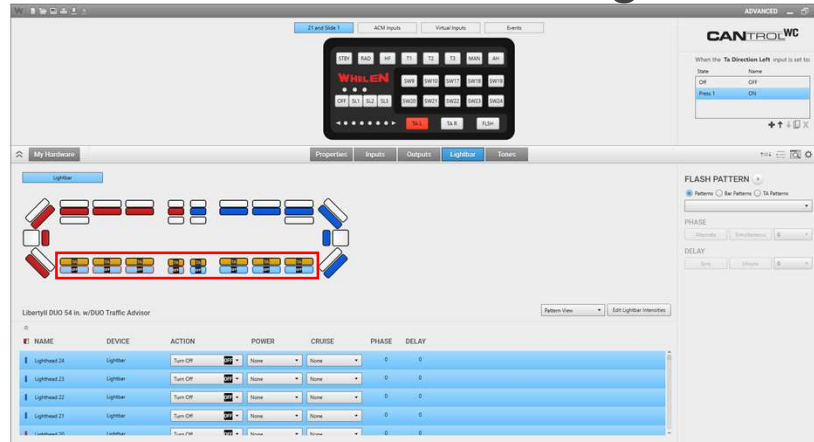
We will configure our lightbar on **TA L** for TA Left



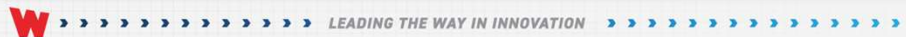
LEADING THE WAY IN INNOVATION

5

ACM TA Warning

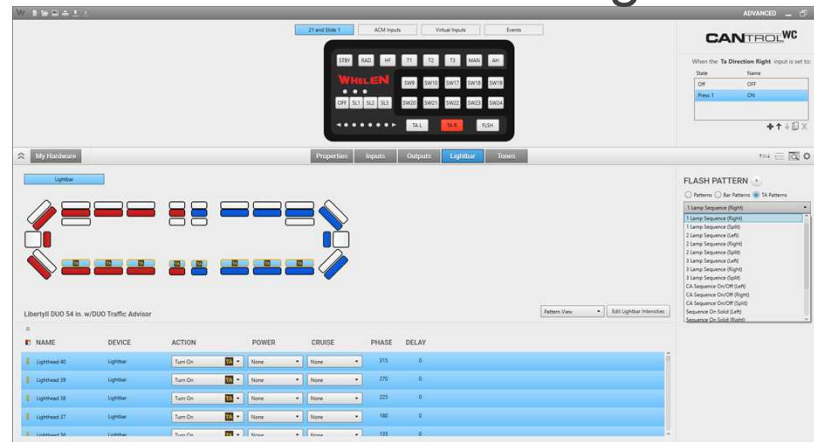


We will want to turn off the Red and Blue warning modules in the rear of the lightbar so they are not on when the TA modules are active



6

ACM TA Warning

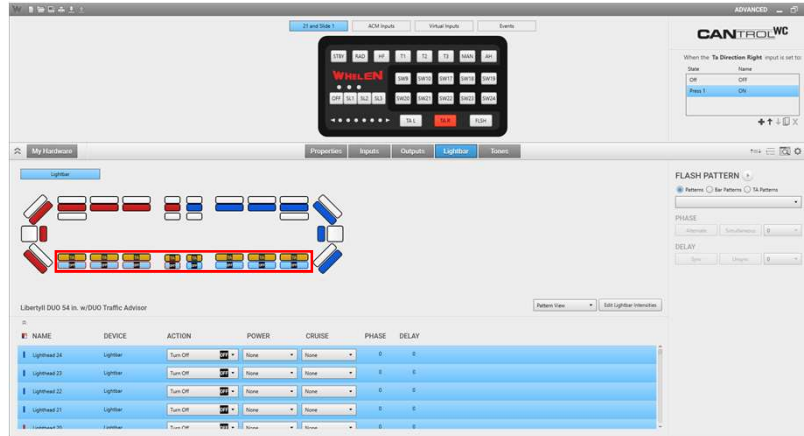


We will configure our lightbar on **TA R** for TA Right



7

ACM TA Warning

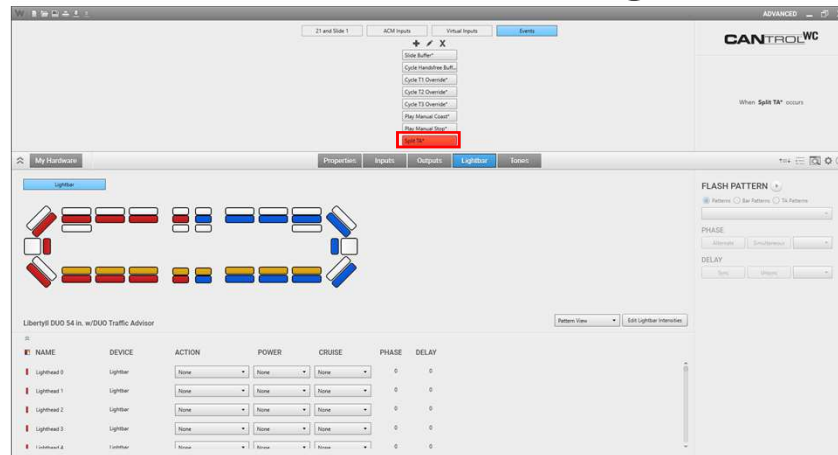


We will want to turn off the **Red** and **Blue** warning modules in the rear of the lightbar so they are not on when the **TA modules** are active



8

ACM TA Warning



The **TA Split** Event is a default pre-configured **Event**. It does require a pattern assigned to it



9

ACM TA Warning



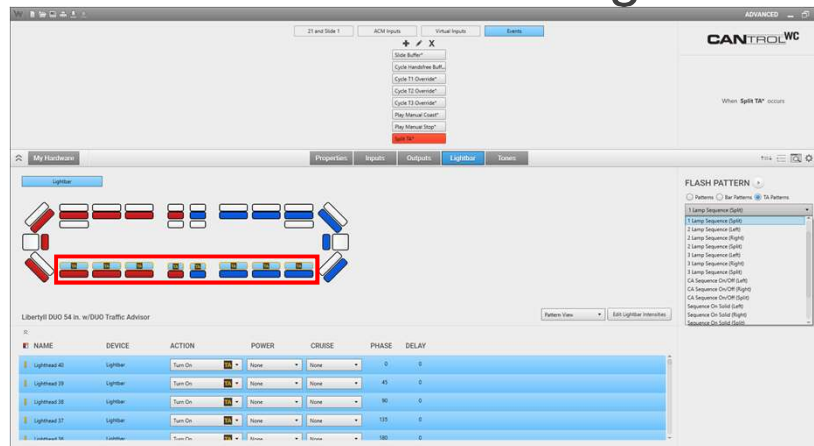
Pre-configured conditions of the **TA Split Event**



LEADING THE WAY IN INNOVATION

10

ACM TA Warning



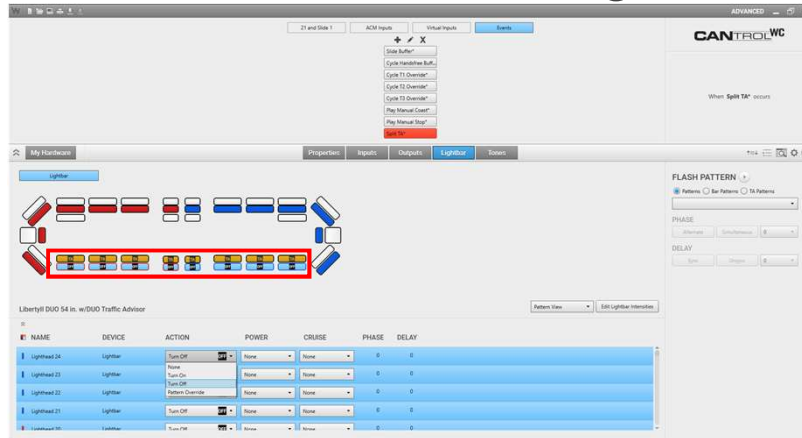
With our conditions set we will configure our **TA Split Event** for split



LEADING THE WAY IN INNOVATION

11

ACM TA Warning



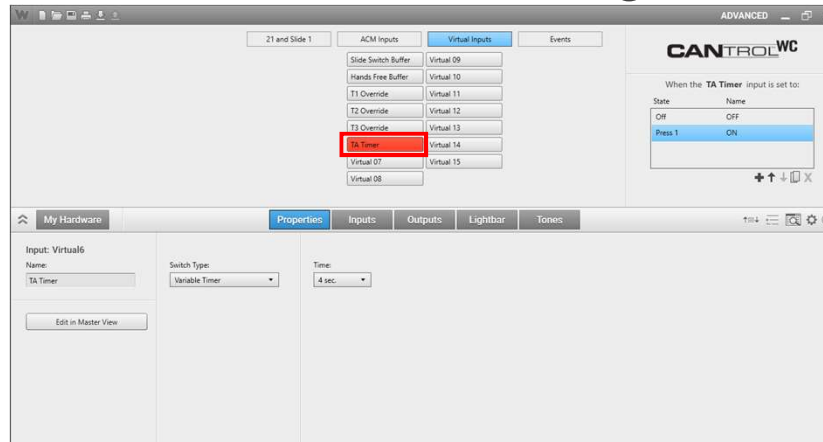
We will want to turn off the Red and Blue warning modules in the rear of the lightbar so they are not on when the TA modules are active



LEADING THE WAY IN INNOVATION

12

ACM TA Warning



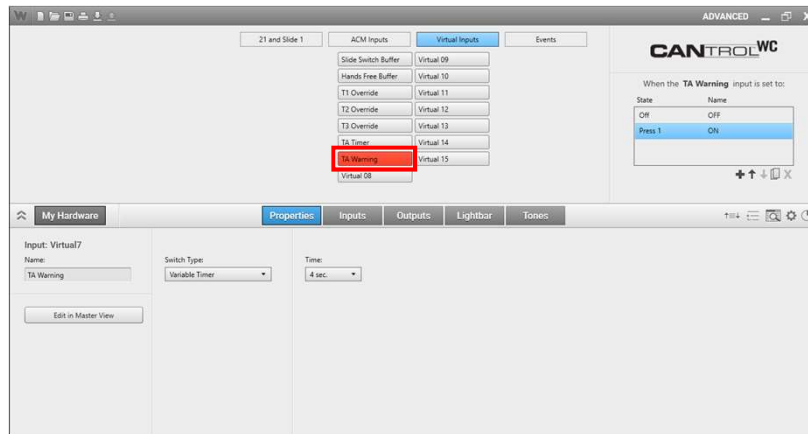
With our TA setup we can now setup our virtual timers. Select the **Virtual Inputs** tab and **Virtual 06** and on the **Properties** page set the name to **TA Timer**, set the switch type to **Variable Timer** and the time to **4 Sec.**



LEADING THE WAY IN INNOVATION

13

ACM TA Warning



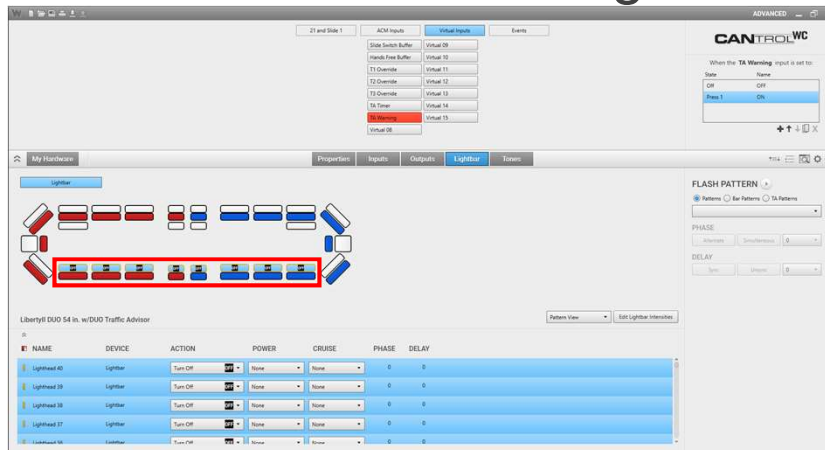
Select **Virtual 07** and on the **Properties** page set the name to **TA Warning**, set the switch type to **Variable Timer** and the time to **4 Sec.**



LEADING THE WAY IN INNOVATION

14

ACM TA Warning



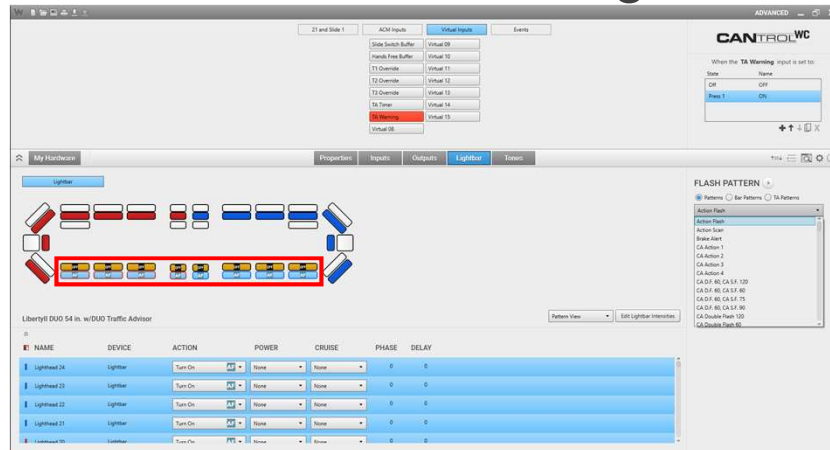
With **TA Warning** still selected on the **Lightbar** page we will set the amber modules to **Turn OFF**



LEADING THE WAY IN INNOVATION

15

ACM TA Warning



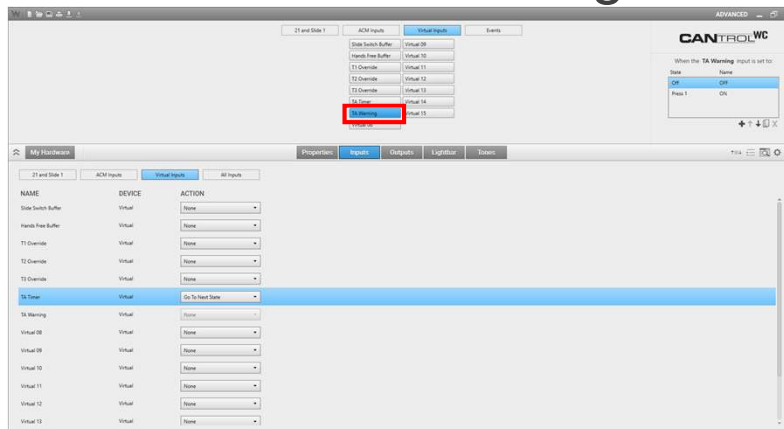
We will then set a flash pattern on the Red and Blue warning modules



LEADING THE WAY IN INNOVATION

16

ACM TA Warning



We need to setup our virtual inputs to tumble so in the **Off State** of **TA Warning** on the **Inputs** page under **Virtual Inputs**, we will set the **Action** for **TA Timer** to **Go to Next State**. This will restart the **TA Timer**



LEADING THE WAY IN INNOVATION

17

ACM TA Warning

The screenshot displays the CANtROLWIC software interface. At the top, there are tabs for "27 and State 1", "ACM Inputs", "Virtual Inputs", and "Events". The "Virtual Inputs" tab is active, showing a grid of virtual inputs. The "TA Warning" input is highlighted with a red box. Below this, the "My Hardware" section shows a table with columns for NAME, DEVICE, and ACTION. The "TA Warning" row is selected, and its action is set to "Go To Next State".

In the **Off State** of **TA Timer** on the **Inputs** page under **Virtual Inputs**, we will set the **Action** for **TA Warning** to **Go to Next State**. This will restart the **TA Warning**.

The virtual inputs will now keep tumbling each other until we turn them off

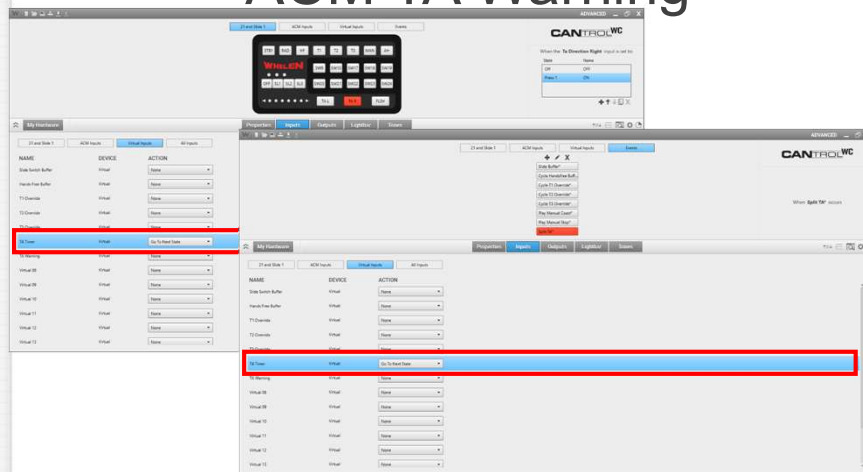
W >>>>>>>>>>> LEADING THE WAY IN INNOVATION >>>>>>>>>>>

19

[illegible]

9

ACM TA Warning



We will also need to start our virtual inputs tumbling on **TA R** control head button and on the **TA Split** Event



LEADING THE WAY IN INNOVATION

20

ACM TA Warning



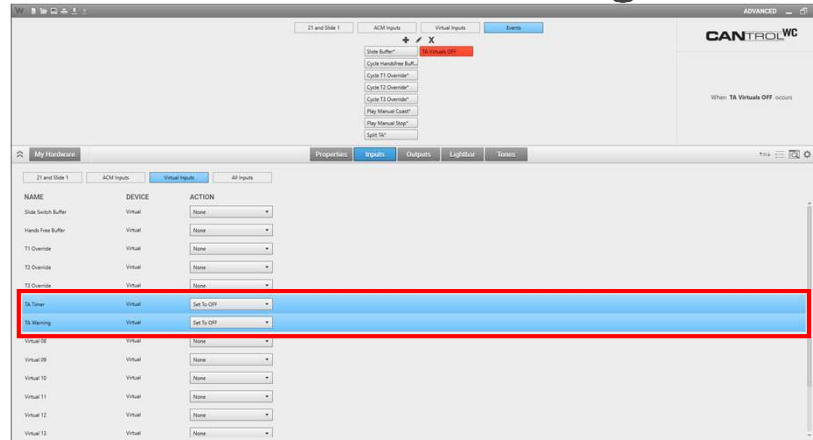
Now that we have started the tumbling process, we want to setup a way to stop it.
We will create a new event and will name it **TA Virtuals OFF**. We will have two conditions **TA Direction Left** and **TA Direction Right** is **OFF**



LEADING THE WAY IN INNOVATION

21

ACM TA Warning

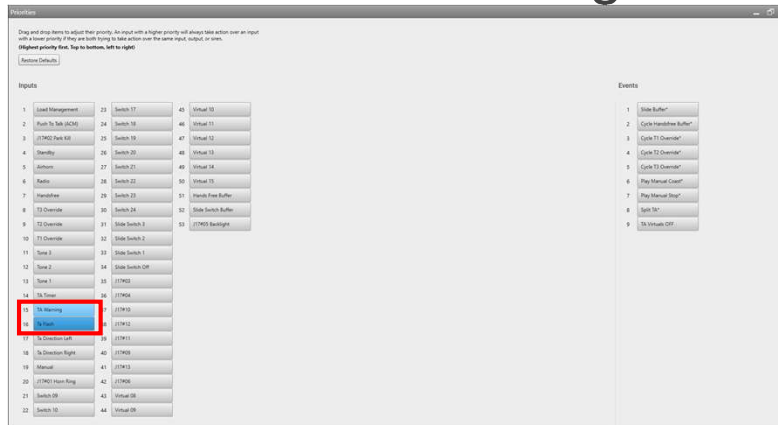


With our conditions set we can close the event manager. On the **Inputs** page under **Virtual Inputs**, we will set the **Action for TA Timer** and **TA Warning** to **Set To OFF**. This will stop the virtual inputs from tumbling



22

ACM TA Warning



In the **Priorities** list we will want to move **TA Timer** and **TA Warning** above **Ta Direction Left** and **Ta Direction Right**. This will let the **TA Warning** flash patterns override the TA flash pattern



23

ACM TA Warning

The top screenshot shows the 'CANTRIQ-WC' window with a digital keypad overlay displaying 'Warning'. The bottom screenshot shows the same window with the 'FLASH PATTERN' section expanded, revealing options like 'Pattern On', 'Off', 'Delay', and 'Flash Pattern'.

We can now transfer our configuration out to the **ACM**. When you activate **TA Left**, **TA Right** or **TA Split** you will see the **TA pattern** displayed for four seconds and then you will see the warning pattern displayed for four seconds until all **TA** functions are turned off

LEADING THE WAY IN INNOVATION

[illegible]



This Document is Copyright Protected © Copyright

This document contains products that are
trademarked by the Whelen Engineering Company,
Inc.

Reproduction is prohibited. Prices included are for
reference only, refer to the Whelen Engineering
Automotive Price List and its addenda for current
pricing.

Whelen Engineering Company reserves the right to
modify its products from those printed in this
presentation.

Refer to published product bulletins for
specifications.



» » » » » » » » » » LEADING THE WAY IN INNOVATION » » » » » » » » » »