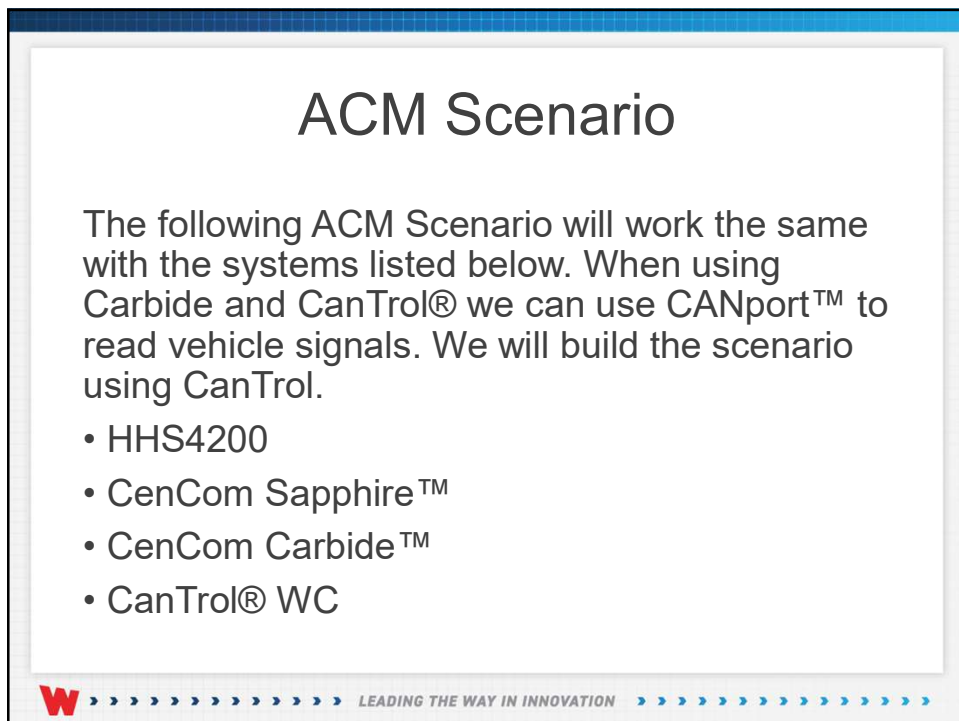




2



3

ACM Day/Night Park Mode



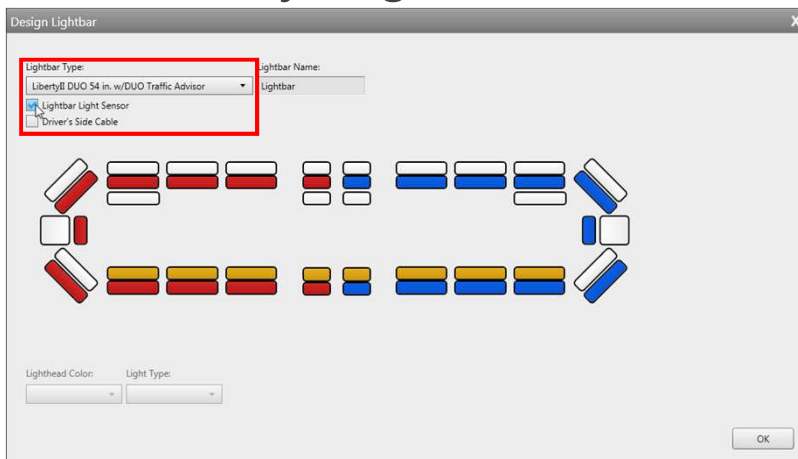
In this **Park** scenario we will program an input to change our flash pattern when the lightbar is active and the vehicle is in park. The pattern will be different depending on if it is **Day** or **Night**. By slowing the flash pattern we make emergency personnel visible sooner to the approaching motorist



» » » » » » » » » » LEADING THE WAY IN INNOVATION » » » » » » » » » »

4

ACM Day/Night Park Mode



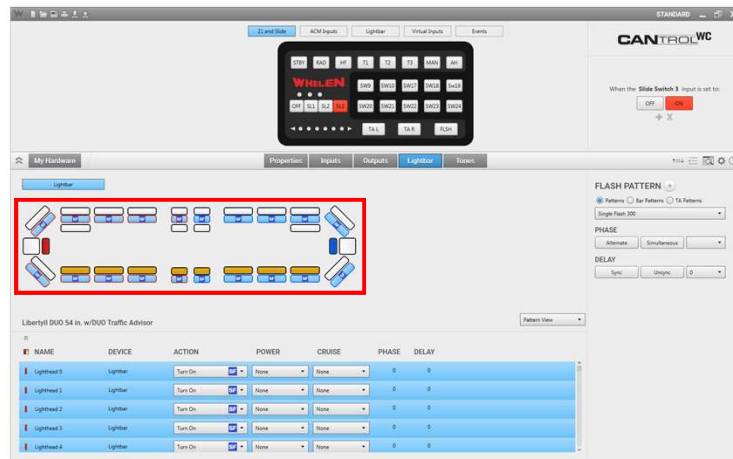
The lightbar we are using is the **Liberty II Duo 54in. w/Duo Traffic Advisor**, with the **Lightbar Light Sensor**



» » » » » » » » » » LEADING THE WAY IN INNOVATION » » » » » » » » » »

5

ACM Park Mode



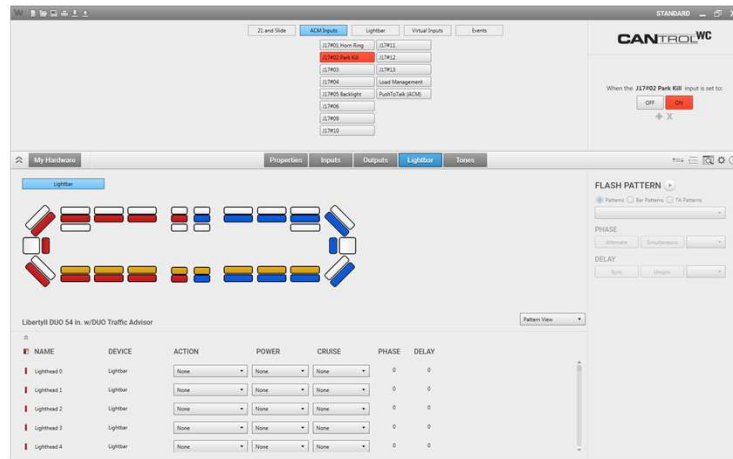
Select **SL3** and on the lightbar page program the front and rear of the lightbar to flash **Single Flash 300** alternating phase 1 and phase 2



LEADING THE WAY IN INNOVATION

6

ACM Park Mode



By default **J17#02 Park Kill** is programmed to turn off all siren functions



LEADING THE WAY IN INNOVATION

7

The screenshot displays the CANtrollWC software interface. In the foreground, the 'Event Manager' window is open, showing the 'Event Name' field set to 'Day Park'. The background interface includes a traffic light diagram, a table of device actions, and a 'FLASH PATTERN' configuration section.

NAME	DEVICE	ACTION			
Lighthead 0	Lightbulb	None	None	None	0 0
Lighthead 1	Lightbulb	None	None	None	0 0
Lighthead 2	Lightbulb	None	None	None	0 0
Lighthead 3	Lightbulb	None	None	None	0 0
Lighthead 4	Lightbulb	None	None	None	0 0

W > > > > > > > > > *LEADING THE WAY IN INNOVATION* > > > > > > > > >

9

Event Manager

Event Name:

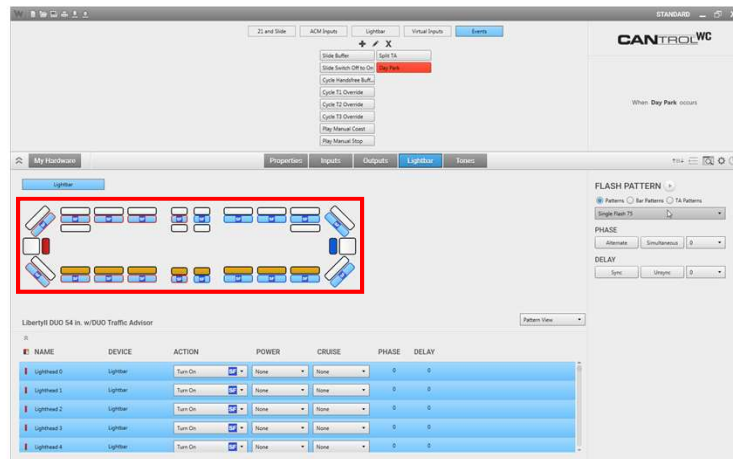
Event Conditions

When	L8 Light Sensor ▼	is ▼	Day ▼	and ▼
When	J17#02 Park Kill ▼	is ▼	ON ▼	and ▼
When	Slide Switch 3 ▼	is ▼	ON ▼	and ▼

[illegible]

9

ACM Day/Night Park Mode



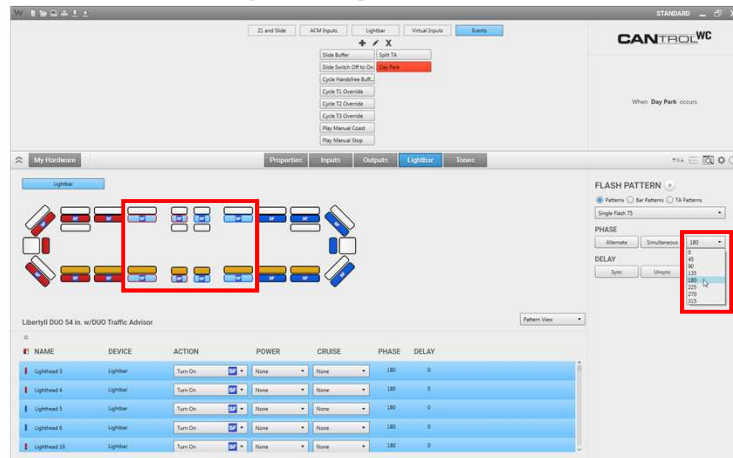
With our **Conditions** set, we can program our event to flash the warning modules in the lightbar at **Single Flash 75** for our Day park pattern



LEADING THE WAY IN INNOVATION

10

ACM Day/Night Park Mode



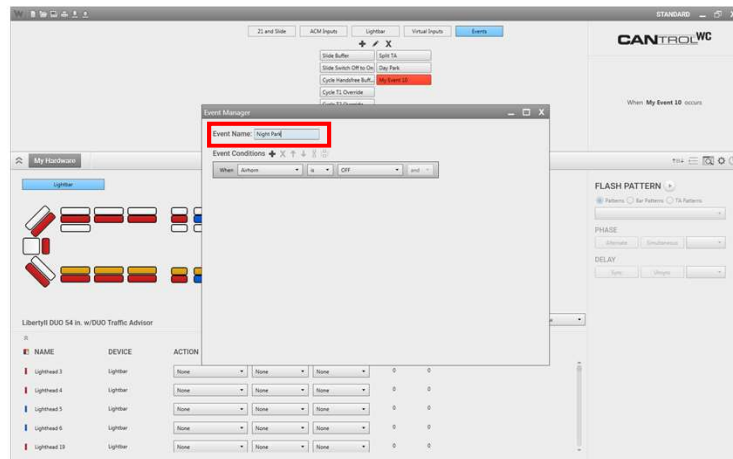
We will set the phase of the two center Red and Blue modules in the front and rear of the lightbar to Phase 2 (180° degrees)



LEADING THE WAY IN INNOVATION

11

ACM Day/Night Park Mode



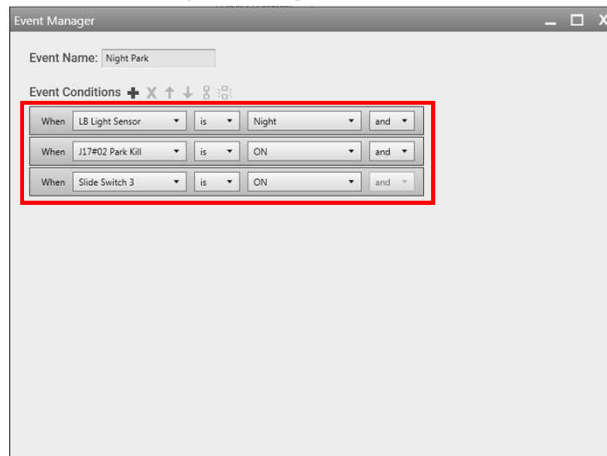
Now that we have our **Day Park** setup, we need to add our night **Event** and name it **Night Park**



LEADING THE WAY IN INNOVATION

12

ACM Day/Night Park Mode



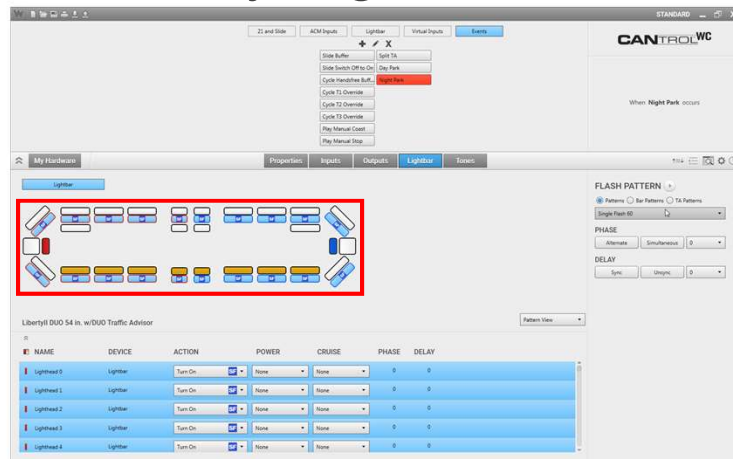
We will need to add 3 conditions. **LB Light Sensor is Night** and **J17#02 Park Kill is ON** and **Slide Switch 3 is ON**



LEADING THE WAY IN INNOVATION

13

ACM Day/Night Park Mode



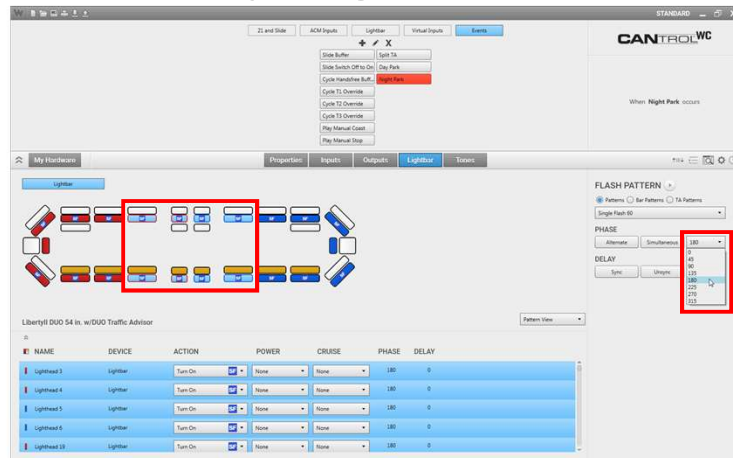
With our **Conditions** set we can program our event to flash the warning modules in the lightbar at **Single Flash 60** for our Night park pattern



LEADING THE WAY IN INNOVATION

14

ACM Day/Night Park Mode



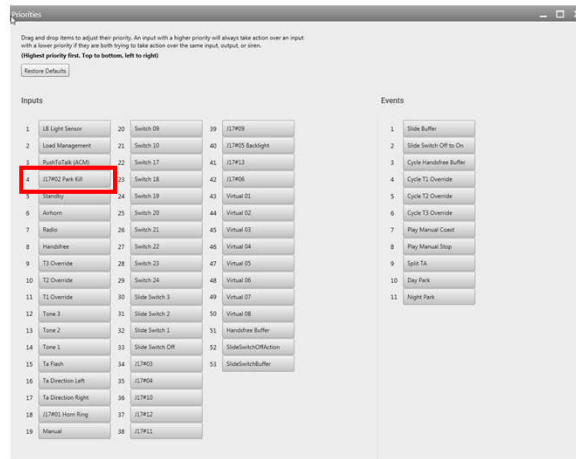
We will set the phase of the two center Red and Blue modules in the front and rear of the lightbar to Phase 2 (180° degrees)



LEADING THE WAY IN INNOVATION

15

ACM Park Mode

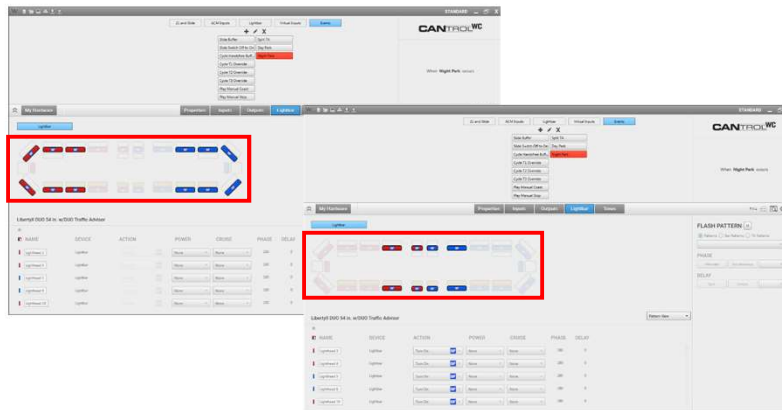


By default **J17#02 Park Kill** is above **Slide Switch 3** in the priority list, so the park flash pattern will override our warning flash pattern



16

ACM Day/Night Park Mode

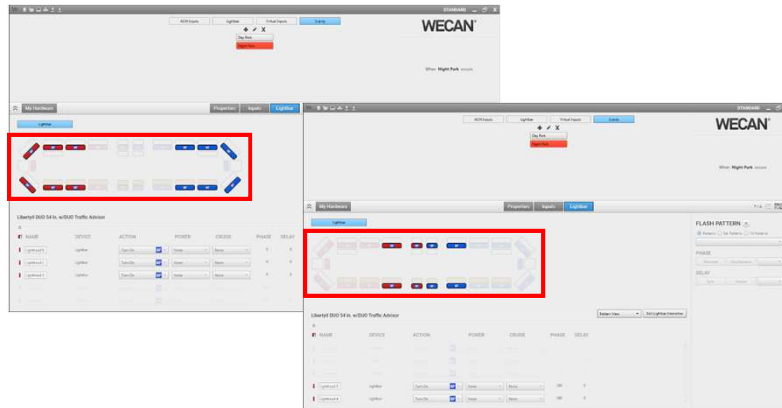


Now if **Slide Switch 3** is actively flashing the lightbar and **J17#02 Park Kill** is active and the **LB Light Sensor** is **Day**, the lightbar will display the **Single Flash 75 slow In/Out** flash pattern for our Day Park



17

ACM Day/Night Park Mode



If **Slide Switch 3** is active flashing the lightbar and **J17#02 Park Kill** is active and the **LB Light Sensor** is **Night**, the lightbar will display the **Single Flash 60** slow In/Out flash pattern for our Night Park



» » » » » » » » » » LEADING THE WAY IN INNOVATION » » » » » » » » » »

18



» » » » » » » » » » LEADING THE WAY IN INNOVATION » » » » » » » » » »

19



This Document is Copyright Protected © Copyright

This document contains products that are
trademarked by the Whelen Engineering Company,
Inc.

Reproduction is prohibited. Prices included are for
reference only, refer to the Whelen Engineering
Automotive Price List and its addenda for current
pricing.

Whelen Engineering Company reserves the right to
modify its products from those printed in this
presentation.

Refer to published product bulletins for
specifications.



» » » » » » » » » » LEADING THE WAY IN INNOVATION » » » » » » » » » »