

Printing Available CANport™ Signals for Specific Model Year Vehicles



Whelen Engineering Company, Inc.

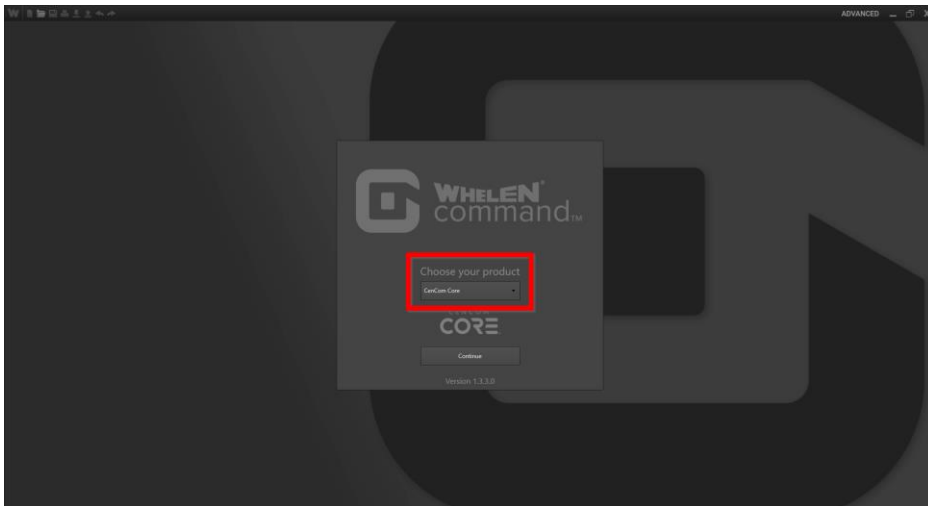
WHELEN

Presentation Outline

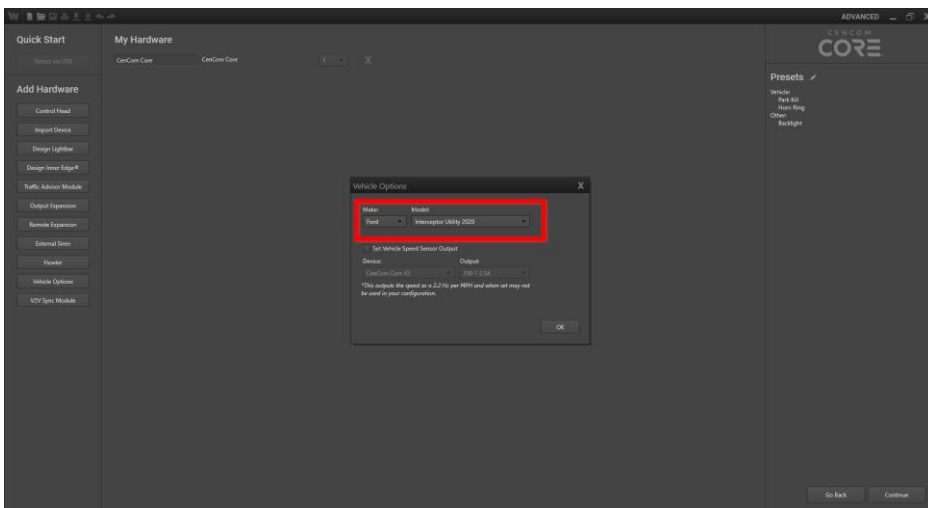
The question comes up often asking “What OBDII signals are available for each model year vehicle?”

With the release of Core™ when we add a vehicle, we get all the CANport™ signals available for that vehicle. This presentation goes through the steps of printing out a complete list of signals.

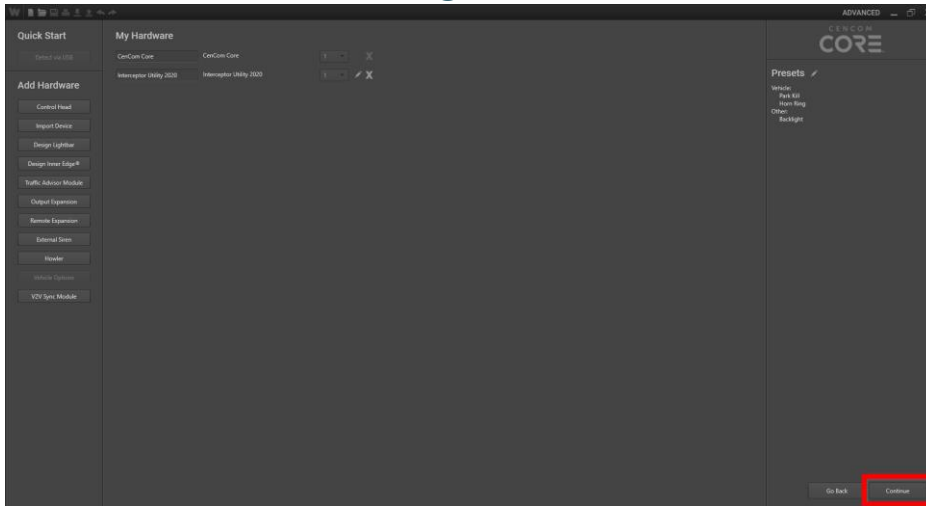
Select CenCom Core™



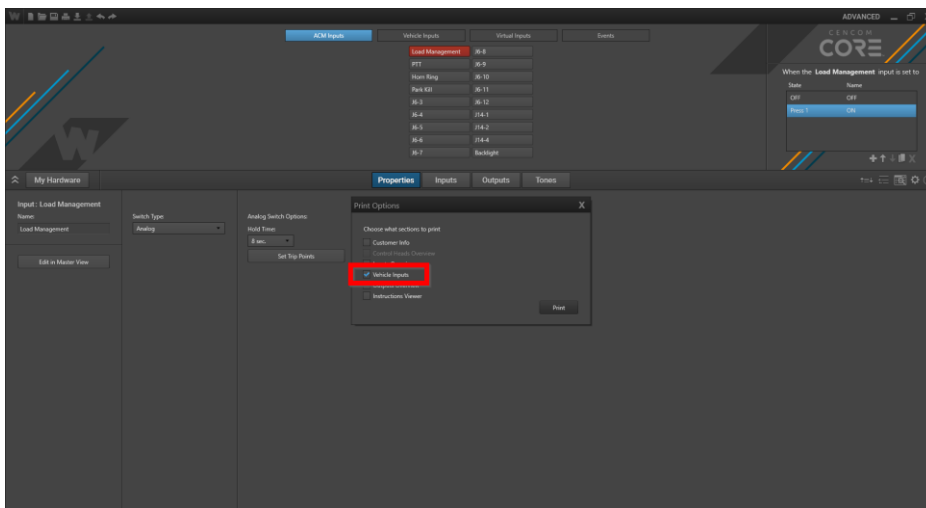
Add the Vehicle Make, Model, and Year



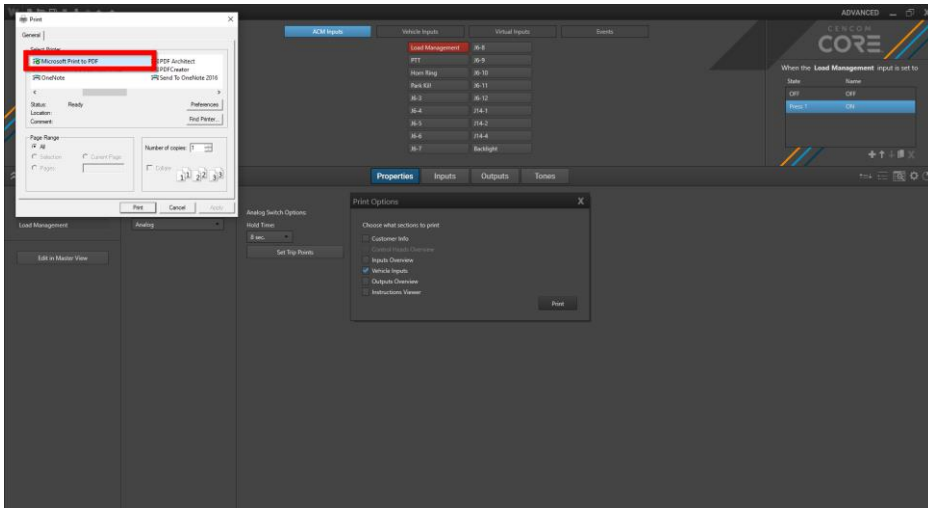
Select Continue to Initialize the Configuration



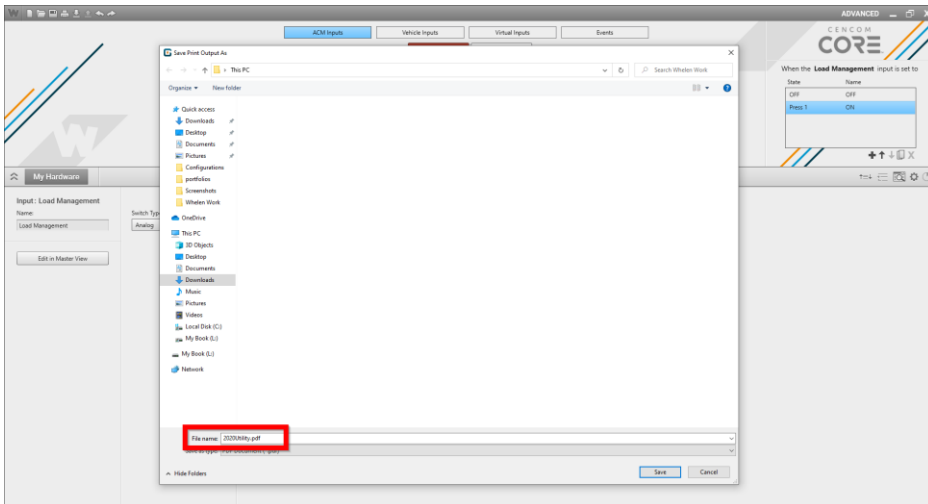
Select Print and Check Vehicle Inputs



Choose Microsoft Print to PDF



Best practice is to name your PDF with Model and Year



Complete List of OBDII Signals

Interceptor Utility 2020

Id	Description	Assigned To	Notes
1	Vehicle Speed		
2	Brake - Parking		
3	Brake - Service		
4	Engine - RPM		
5	Throttle Position		
6	Trans - Park		
7	Trans - Reverse		
8	Trans - Neutral		
9	Trans - Drive		
10	Trans - Range		
11	Engine - Running		
12	Door - FD		
13	Door - FP		
14	Door - RD		
15	Door - RP		
16	Door - Hatch		
17	Door - Any Front		
18	Door - Any Back		
19	Door - w/o Hatch		
20	Door - w/ Hatch		
21	Headlights - L Beam Any		
22	Headlights - H Beam Any		
23	Headlights - Any		
24	Turn Signal - R		
25	Turn Signal - L		
26	Hazards - Lights		
27	Seatbelt - Front Driver		
28	Seatbelt - Front Passenger		
29	Key Switch - OFF		
30	Key Switch - RUN		
31	Key Switch - IGN		
32	Key Switch - Position		
33	Turn Signal - L Latched		
34	Turn Signal - R Latched		
35	Hazards - Latched		

When printing Chevy vehicles there will be a list for each network

Tahoe 2020

Id	Description	Assigned To	Notes
1	Vehicle Speed		
2	Brake - Parking		
3	Fuel Level		
4	Engine - RPM		
5	Throttle Position		
6	Trans - Park		
7	Trans - Reverse		
8	Trans - Neutral		
9	Trans - Drive		
10	Trans - Range		
11	Engine - Running		
12	Headlights - L Beam Any		
13	Key Switch - OFF		
14	Key Switch - ACC		
15	Key Switch - RUN		
16	Key Switch - IGN		
17	Key Switch - Position		
18	Headlights - Fog		
19	Wipers - Front		
20	Brake - Position		
21	Drivetrain - 2WD		
22	Drivetrain - 4WD/4H/4L		
23	Drivetrain - Range		
24	Wheel Direction		
25	A/C - Power		
26	A/C - Fan Speed		

Tahoe 2020

Id	Description	Assigned To	Notes
1	Brake - Service		
2	A/C - Clutch		
3	Door - FD		
4	Door - FP		
5	Door - RD		

WHELEN®



WHELEN®



This Document is Copyright Protected © Copyright

This document contains products that are trademarked by the Whelen Engineering Company, Inc.

Reproduction is prohibited. Prices included are for reference only, refer to the Whelen Engineering Automotive Price List and its addenda for current pricing.

Whelen Engineering Company reserves the right to modify its products from those printed in this presentation.

Refer to published product bulletins for specifications.