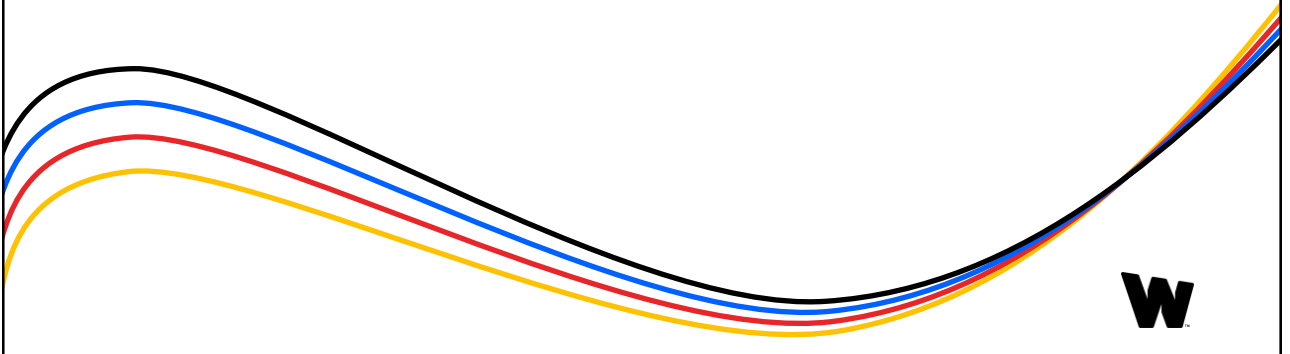


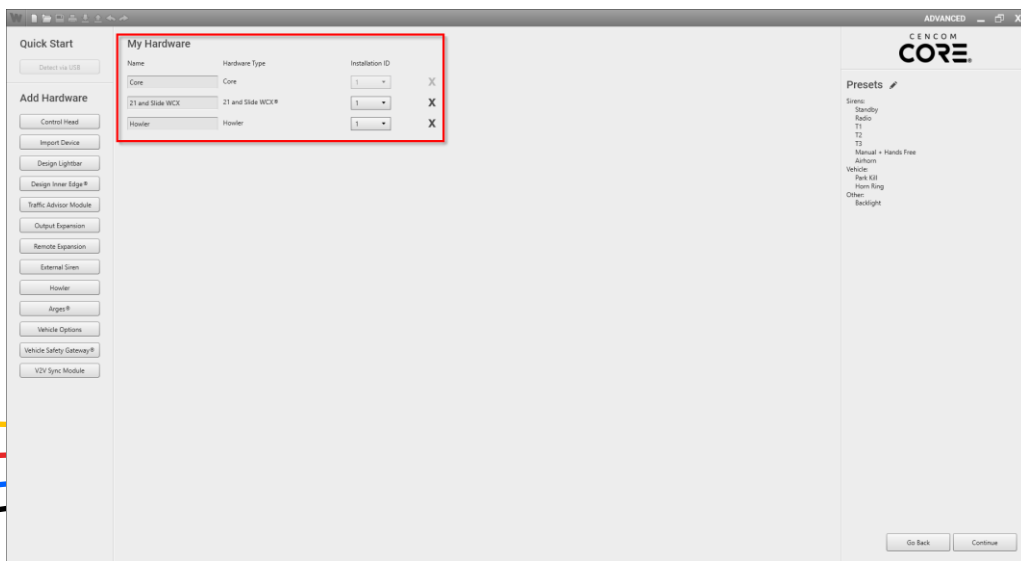


Scenario Operation

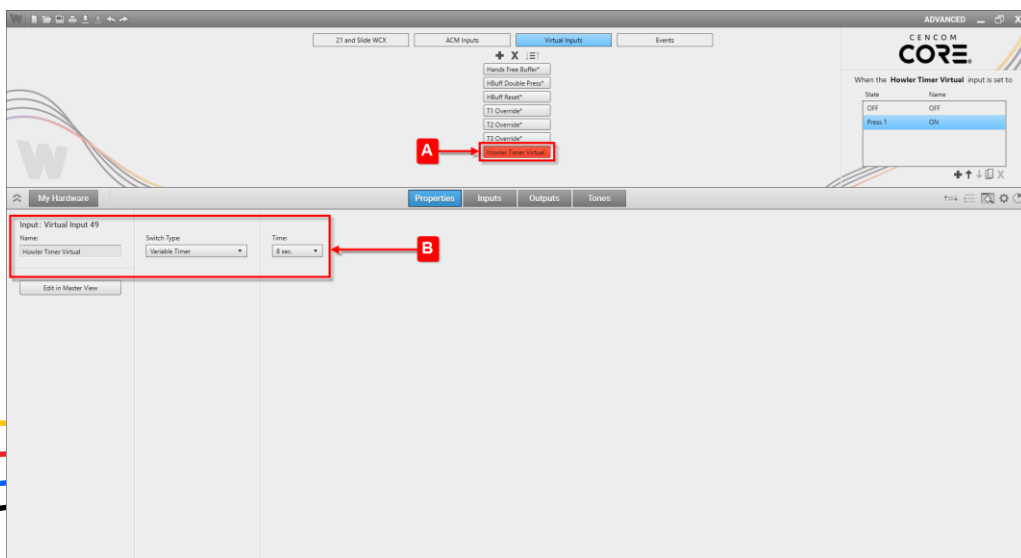
The CenCom Core™ Howler scenario configures CenCom Core and the WeCanX™ Howler to play a low frequency tone for 8 seconds whenever a siren Tone is activated or cycled.

The time, activation and tone can be configured by the user.



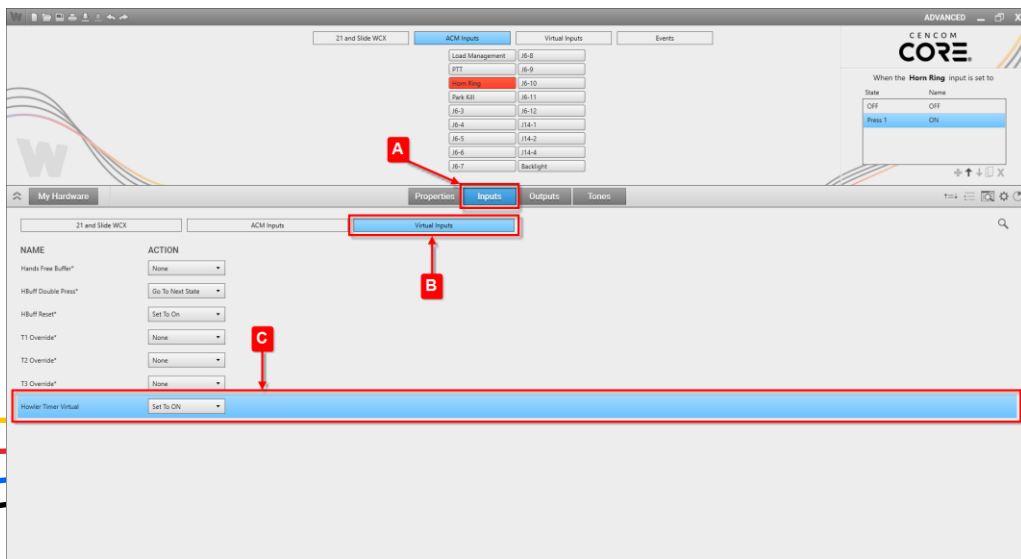


Add all required Hardware

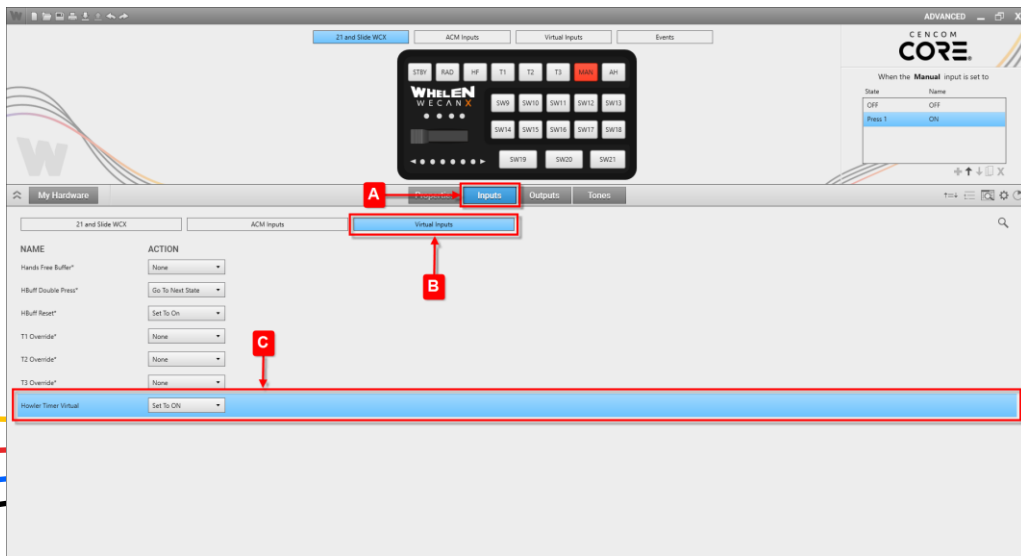


(A). Add a new Virtual Input (B). Name it **Howler Timer Virtual** set the Switch type to **Variable Timer** and the Time for **8 sec**.



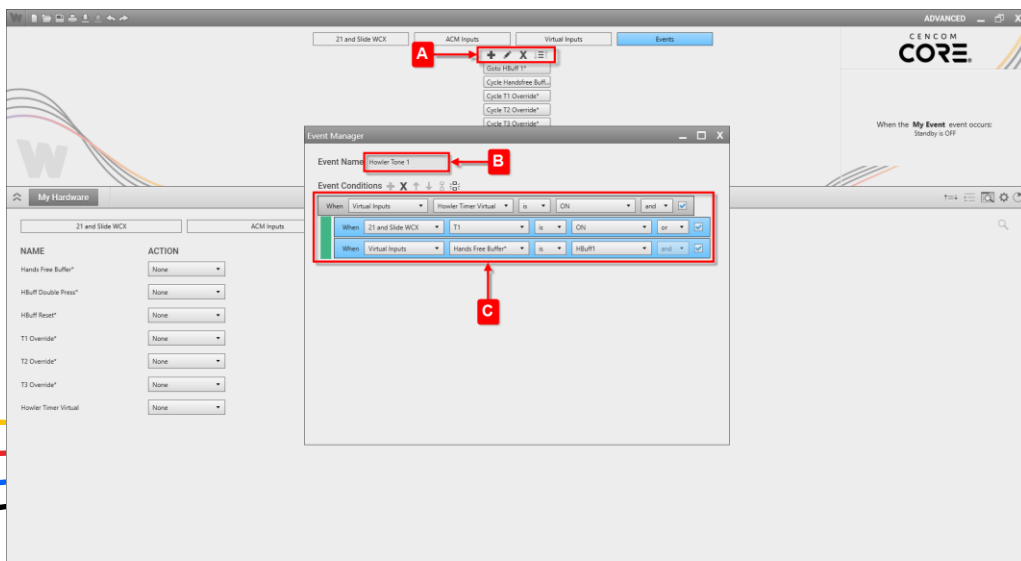


Select the **Horn Ring** ACM Input (A). On the **Inputs** Page(B). Filter by **Virtual Inputs** (C). And set the Action for the **Howler Timer Virtual** to **Set To ON**

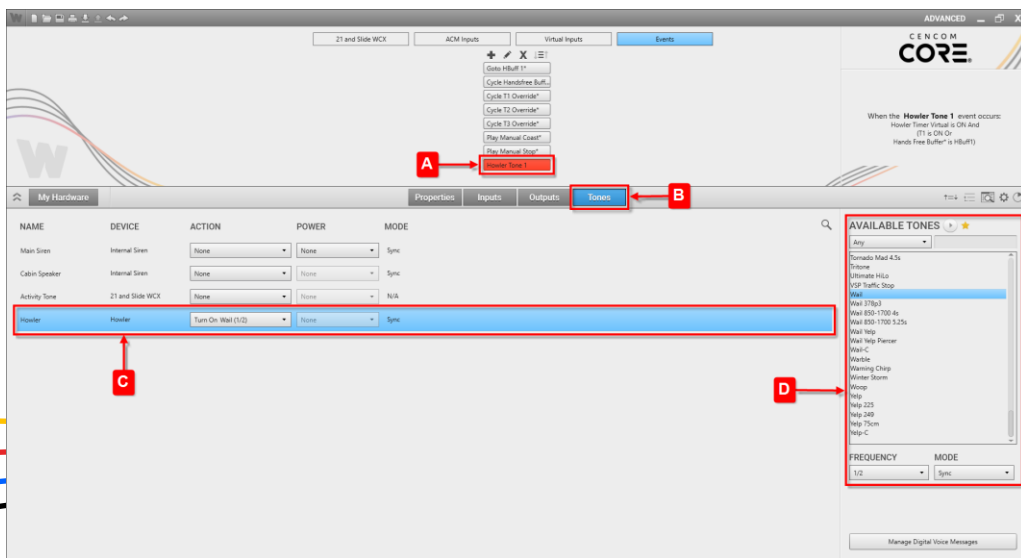


Select the **Manual Button** (A). On the **Inputs** Page(B). Filter by **Virtual Inputs** (C). And set the Action for the **Howler Timer Virtual** to **Set To ON**



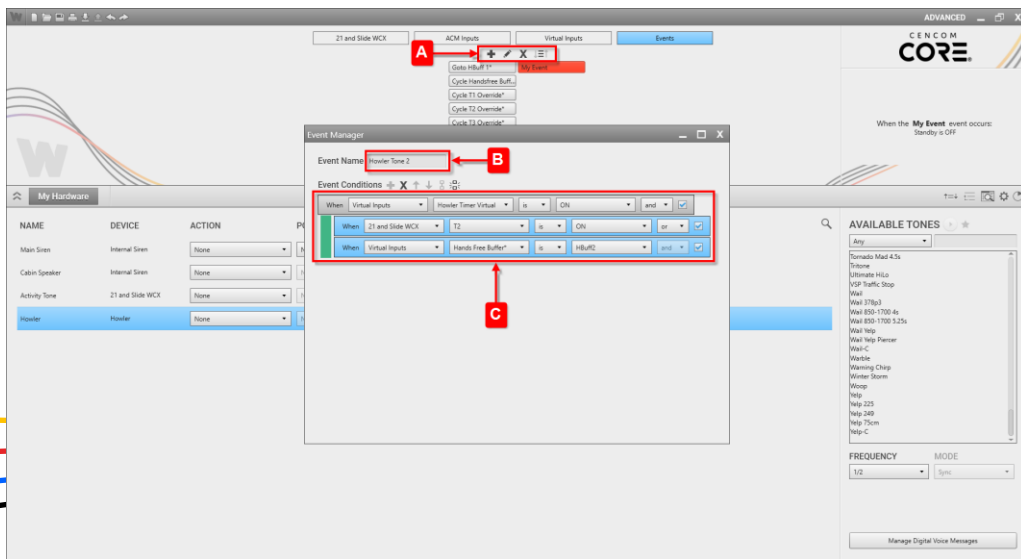


(A). Add a new event (B). Named **Howler Tone 1** (C). Add 3 conditions **Virtual Inputs Howler Timer Virtual is ON** and, **21 and Slide WCX T1 is ON** or, **Virtual Inputs Handsfree Buffer* is HBuf1**, Link **OR** conditions

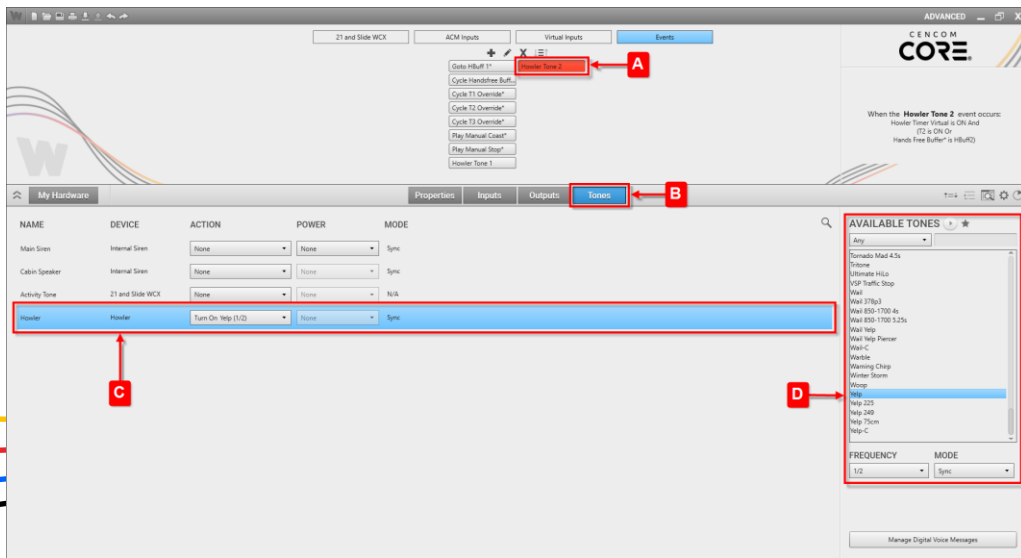


(A). With **Howler Tone 1** selected (B). On the **Tones** page (C). Set the Tone for the **Howler** to (D). **Wail**

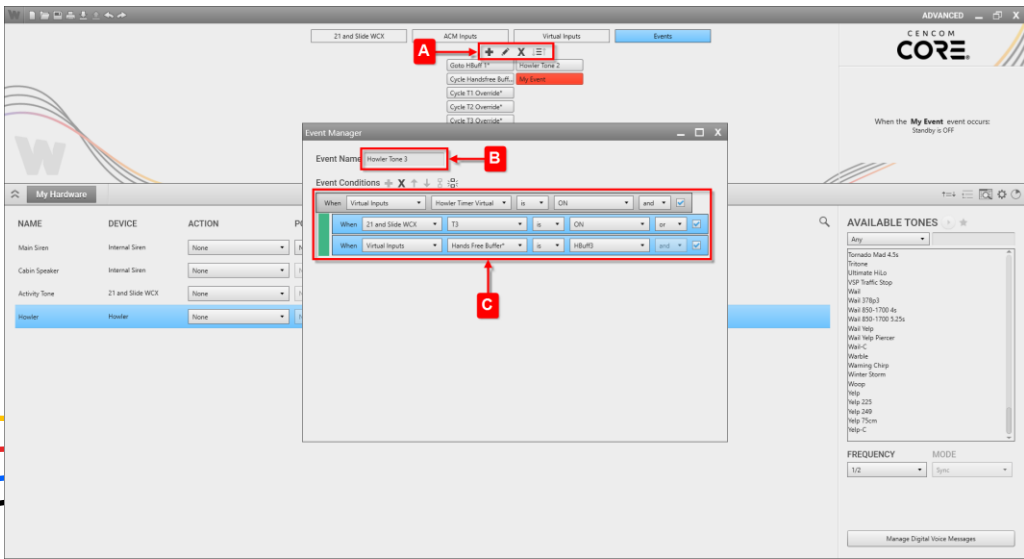




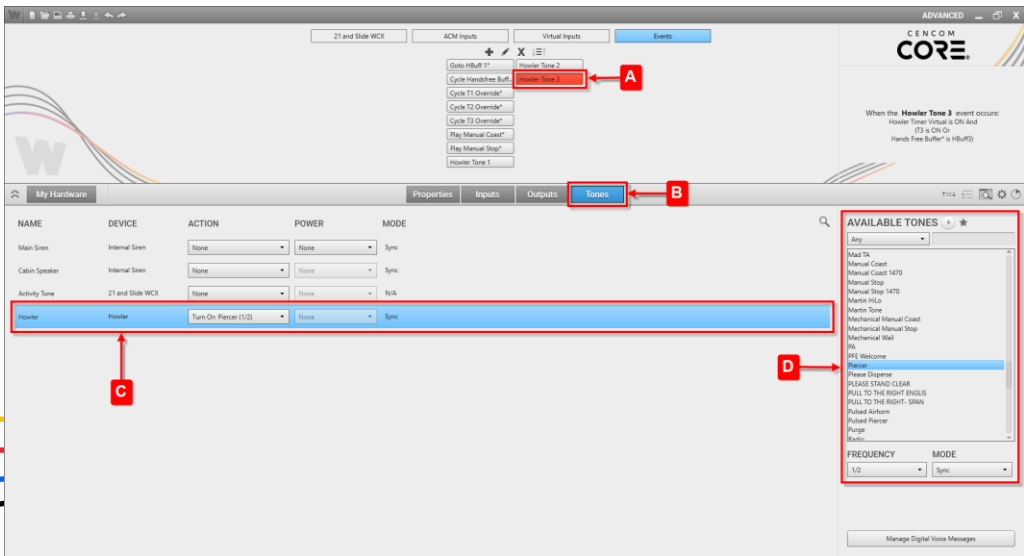
(A). Add a new event (B). Named **Howler Tone 2** (C). Add 3 conditions **Virtual Inputs Howler Timer Virtual is ON** and, **21 and Slide WCX T2 is ON** or, **Virtual Inputs Handsfree Buffer* is HBuf2**, Link **OR** conditions **W**



(A). With **Howler Tone 2** selected (B). On the **Tones** page (C). Set the Tone for the **Howler** to (D). **Yelp** **W**



(A). Add a new event (B). Named **Howler Tone 3** (C). Add 3 conditions **Virtual Inputs Howler Timer Virtual is ON** and, **21 and Slide WCX T3 is ON** or, **Virtual Inputs Handsfree Buffer* is HBuf3**, Link **OR** conditions

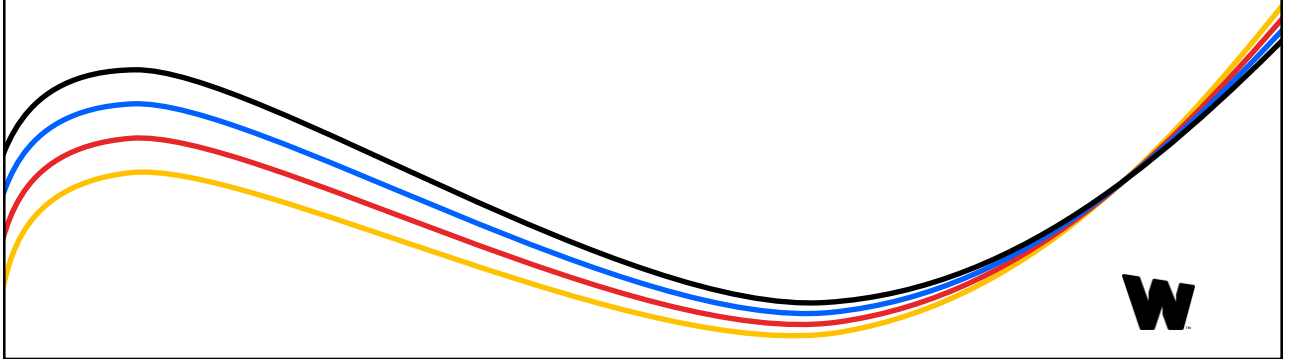


(A). With **Howler Tone 3** selected (B). On the **Tones** page (C). Set the Tone for the **Howler** to (D). **Piercer**



Scenario Synopsis

When Handsfree, T1, T2 or T3 are active and the Manual button or the Horn Ring is pressed the Howler Timer will start for 8 seconds. The corresponding event will be true and processed activating the Howler Tone.



This Document is Copyright Protected © Copyright

This document contains products that are trademarked by the Whelen Engineering Company, Inc.
Reproduction is prohibited. Prices included are for reference only, refer to the Whelen Engineering Automotive Price List and its addenda for current pricing.

Whelen Engineering Company reserves the right to modify its products from those printed in this presentation.
Refer to published product bulletins for specifications.

