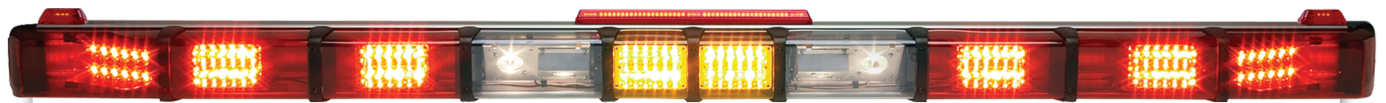


# 4500 Build-a-Bar Series

**WHELEN®**



**NEW** →  
**ROTA-BEAM™**  
SUPER-LED® SOLID-STATE  
ROTATING MODULE.  
NO MOVING PARTS!



# 4500 Build-a-Bar™ Series

## Combination Super-LED®, Strobe and Halogen flush mounted lightbars

Flush mounted extrusions are available with or without ICC lights, in lengths starting at 22".

The Build-a-Bar Series can be equipped with your choice of Linear or Super-LED modules, strobe and halogen lightheads to meet KKK-1822F primary lighting specifications or secondary lighting requirements.

Use the Lightbar WeCad™ program available on our Website and it's easier than ever to create a custom lightbar built exactly to your specs.

- n 700 Series Halogen or Linear Strobe, and 700 or 400 Series Linear Super-LED® provides exceptional light output and reliability.
- n 4-13/16" high by 5-1/4" deep with a rugged extruded aluminum housing that will not sag or warp. Even lengths in 2" increments from 22" to 90" are available.
- n Slide bolt mounting simplifies installation, front mounted lenses and quick mount lightheads allow easy access to the interior of the bar for quick service or replacement.
- n Halogen rotators feature dual ball bearing design, state-of-the-art optics and are backed by a three-year warranty.
- n **NEW** ROTA-BEAM™ Super-LED solid-state rotating module available for new production builds. Also retrofits in place of halogen rotators. 16 Scan-Lock™ flash patterns inside module. Absolutely no moving parts.
- n Super-LED modules provide long life performance with low amp draw.
- n All LED lightheads have a five-year warranty.
- n Pre-configured interior light packages meet KKK-1822F requirements.
- n WeCad™ program allows you to build the exact lightbar you require using easy "drag and drop" software. Graphic representation shows you how your lightbar is configured before you place your order.
- n Optional LED ICC lights, amber front or red rear, meet SAE J592 and J2042 requirements.
- n Rear center LED clearance light has a third brake light to meet SAE J1957.
- n Model 45LRLOAD LR LED Load Lights replace the standard 700 Series Halogen. This high intensity LED option producing 3600 lumens, has three LR modules mounted at specific angles (6 total) to give superior illumination at both tread plate and loading area.
- n Traffic Advisors™ available with six or eight 400 Series Linear-LEDs and come with a 35 foot cable and control head.

Choose a pre-configured lightbar or build your own with multiple configuration choices.





# A-LA-CARTE LIGHTBAR OPTIONS

Start with a heavy-duty aluminum housing in your choice of lengths, then add the lighting options you need with a wide variety of easy to configure modules.



Extruded Aluminum Housing

NEW



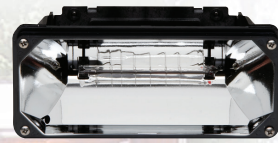
ROTA-BEAM Super-LED®  
Solid-State Rotating Module



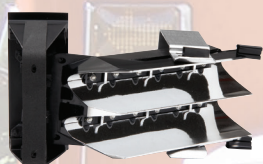
700 Series Linear-LED®



700 Series Halogen



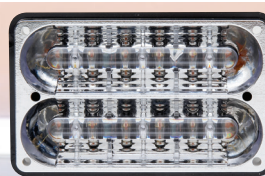
700 Series Linear Strobe



Angled Linear-LED Corner



Angled Strobe Corner



400 Series Linear-LED



Halogen Rotator



700 Series Load Light (standard)



Miovision Opticom™ Emitter



LR11 Load Light

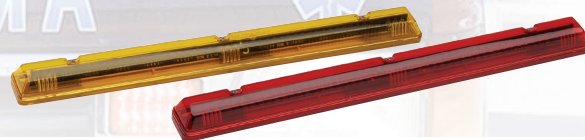
Model	VDC	Amp Draw
700 Strobe	12.8	See Power Supply
Corner Strobe		See Power Supply
700 Halogen/Flashing		5 A
700 Linear-LED		1.5 A
700 Load Lights		4.9 A
400 Linear-Led		1.5 A
Corner Linear-LED		1.5 A
LR11 Load Light		4.5 A
LED ICC Light (End)		25 MA
LED ICC Light (Center)		50 MA
LED ICC Light (Center 3rd B/T/T)		150 MA
Halogen Rotator		3.5 A
ROTA-BEAM		3.5 A



End LED ICC Lights



Color Lenses



Center LED ICC Lights



# BUILD-A-BAR

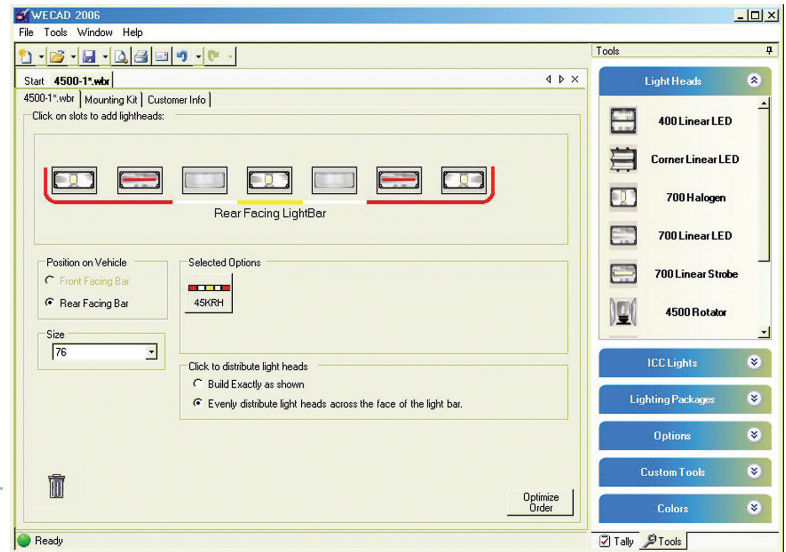
Building your lightbar is easy with Whelen's 4500 Build-a-Bar WeCad™ program!

Just go to [www.whelen.com/eng\\_apps/index.php](http://www.whelen.com/eng_apps/index.php), and download "WeCad Lightbar Designer". The WeCad Program will prompt you as to how many and which modules may be used together, along with a suggested retail price as you go.

1. Choose front or rear facing bar, and length.
2. Add ICC light if desired.
3. Choose Linear-LED or 4500 Plus light modules.
4. Follow menu prompts to select light module and color options, drag and drop for position.

## 4500 Series Base

45B52 .....52" long  
45B52\* .....52" long, with center-mounted LED ICC lights  
45B±± .....±± Insert length 60", 72" or 76" long  
45B±±\* .....±± Insert length 60", 72" or 76" long, with center-mounted LED ICC lights  
45B±± .....±± Insert length 82", 84", 86", 88" or 90" long  
45B±±\* .....±± Insert length 82", 84", 86", 88" or 90" long, with LED ICC lights



## Pre-configured KKK Approved Packages

### 4500 Build-a-Bar

45KFS .....Interior KKK front strobe lighting package, includes three strobes  
45KRS .....Interior KKK rear strobe lighting package, includes three strobes and two load lights  
45KFH .....Interior KKK front halogen lighting package, includes three halogen modules  
45KRH .....Interior KKK rear halogen lighting package, includes three halogen modules and two load lights

### 4500 Plus Super-LED® Build-a-Bar

45KFL .....Interior KKK front Super-LED lighting package, includes two corner Red, two 400 Series Red and two 400 Series White Linear-LEDs  
45KRL .....Interior KKK rear Super-LED lighting package, includes two corner Red, two 400 Series Red, two 400 Series Amber Linear-LEDs and halogen load lights

## Options To Complete Your Lightbar

### 4500 Plus Build-a-Bar

45LRLOAD .....Add a pair of triple (6 LR11s total) LR11 Super-LED load lights (replaces 45MRLOAD)  
45ADRB\* .....**NEW** ROTA-BEAM Super-LED solid-state rotating module, Red, Blue, Amber, or White  
45ALOAD .....Add two load lights  
45DLOUTA .....Delete outboard two Amber ICC lights only  
45DLOUTR .....Delete outboard two Red ICC lights only  
45DLCNTA .....Delete center Amber ICC light only  
45DLCNTR .....Delete center Red ICC light only  
45ADDDHAL .....Add one 700 Series halogen lighthouse  
45ADDSTR .....Add one 700 Series strobe lighthouse  
45ADDAST .....Add one outboard angled strobe lighthouse  
45ADROTA .....Add one halogen rotator  
45ADL8\* .....Add one single color 700 Series Super-LED lighthouse (flashing) Red, Blue or Amber  
45ADLS8\* .....Add one single color 700 Series Super-LED lighthouse (steady), Amber, Blue, Red or White (flasher purchased separately)  
45ADL8\* .....Add one single color 700 Series Super-LED lighthouse (flashing), Red, Blue or Amber  
45ADLS8\* .....Add one single color 700 Series Super-LED lighthouse (steady), Amber, Blue, Red or White (flasher purchased separately)  
795H .....Miovision self-contained LED IR Opticom Emitter  
45795H .....Installation of 795H in a 4500 Series lightbar

### 4500 Plus Super-LED Build-a-Bar

45DLOUTA .....Delete outboard two Amber ICC lights only  
45DLOUTR .....Delete outboard two Red ICC lights only  
45DLCNTA .....Delete center Amber ICC light only  
45DLCNTR .....Delete center Red ICC light only  
45ADRB\* .....**NEW** ROTA-BEAM™ Super-LED solid-state rotating module, Red, Blue, Amber, or White  
45CL\* .....Add one single color corner Linear-LED lighthouse, Amber, Blue, Red or White  
45FL\* .....Add one single color 400 Series Linear-LED lighthouse, Amber, Blue, Red or White  
45LFLASH .....Add one internal flasher & harness only, for up to four 400 or 700 Series Linear-LED Super-LED lighthouses  
45TA .....Super-LED Traffic Advisor™ and halogen load light upgrade, for use with 4500 Series 82" or larger  
795H .....Miovision self-contained LED IR Opticom™ Emitter  
45795H .....Installation of 795H in a 4500 Series lightbar

\* Replace symbol in model number with letter indicating color desired  
A = Amber; B = Blue; R = Red; W = White



**WHELEN**  
ENGINEERING COMPANY, INC.

51 Winthrop Road, Chester, CT 06412  
860-526-9504 • Fax 860-526-4078  
[www.whelen.com](http://www.whelen.com)

Whelen Engineering reserves the right to upgrade and improve products without notice. NASCAR® is a registered trademark of the National Association for Stock Car Auto Racing, Inc. © 2013 Whelen Engineering Company, Inc. Printed in the U.S.A. Code #11450G-0513