

MANUFACTURED IN AMERICA

COMMERCIAL FLEET PRODUCTS

SAFETY LIGHTS AND ACCESSORIES

WHELEN ENGINEERING COMPANY, INC.



WHELEN[®]
MANUFACTURED IN AMERICA

Table of Contents

Beacons.....	04
Lightbars.....	10
Mini Lightbars.....	18
Traffic Advisor™	30
Light Arrays	34
Dash & Deck	36
Lightheads.....	40
White Illumination.....	64
Controls & Flashers.....	80
Lighting Compliance.....	86
Product Index	87



Visit us at whelen.com
To learn about our full line of emergency lighting and warning products.



To download WeCad™, Whelen Command®, and Pioneer™ Designer go to whelen.com/software-downloads

About Whelen

Whelen Engineering designs and manufactures reliable and powerful warning lights, white illumination lighting, sirens, controllers, and high-powered warning systems for Automotive and Mass Notification industries worldwide.

Whelen products have been proudly designed and manufactured in America since 1952. With quality as the foundation, Whelen celebrates innovative engineering with every product made.

Manufactured in America for Over 70 Years
We never left and we're here to stay.



Warranty Disclaimer

WeCanX® models have a 10-year warranty on I/O boards and lightheads. WeCan™ models have a 2-year warranty on I/O boards and a 10-year warranty on lightheads. Low Current models have a 5-year warranty on I/O boards and a 10-year warranty on lightheads. These warranties go into effect January 1, 2024.

For our full warranty statement please visit www.whelen.com/warranty

@WhelenENG

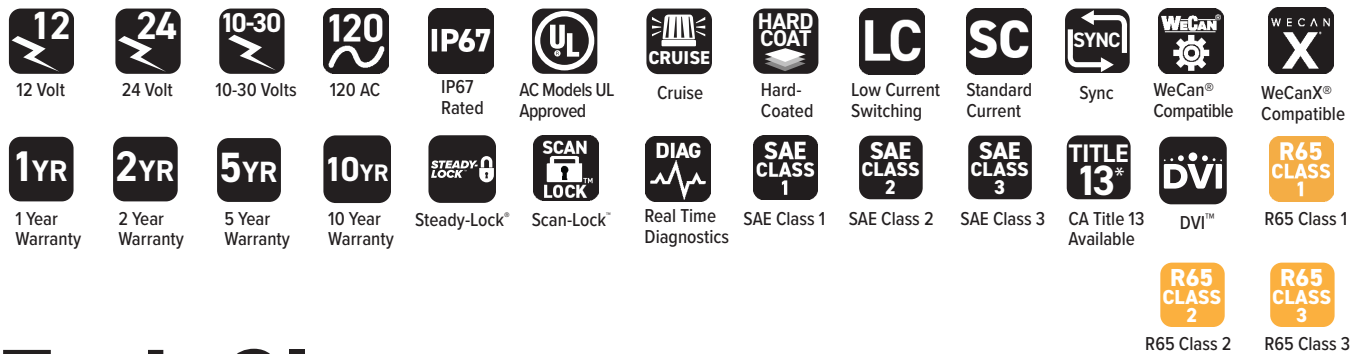


Chester, Connecticut facility



Charlestown, New Hampshire facility

Icon Legend



Tech Glossary

BroadBand Blue™

BroadBand Blue delivers a higher intensity, creates a larger optical image, and produces a more consistent color, all while being easier on the eyes - especially at night.

Conformal Coating

A thin material that conforms to the contours of the PCB to protect the electronic components from harsh environments and impact.

DUO™

Two-color interleaved LEDs

DUO+™

Two-color interleaved LEDs with independent control of color one and color two

DYAD™

Two-level technology

Dynamic Variable Intensity™ (DVI™)

DVI patterns gradually increase and decrease warning light intensity, which better conveys visual information to approaching motorists at night. These patterns clearly indicate when a vehicle is parked and improves a driver's ability to safely navigate around a work zone.

E Block™

Whelen's patented E Block technology protects against the elements by creating a watertight seal around a unit's stranded wires to prevent moisture from entering the lighthouse.

Encapsulated

Lighthouses are fully encapsulated for moisture and vibration resistance.

Hard-Coat

Whelen's industry-first innovative Hard-Coating process counteracts the effects of environmental and chemical damages to our lenses and domes.

Linear-LED® - (Super-LED®)

Whelen's optimized use of the latest generation of LEDs and unique reflector optics to produce highly intense light that has superior wide-angle visibility and rivals strobe in performance.

Low Current

Low current function wires require less than 0.25 amp to operate, allowing for simple operation of each lightbar function.

ProFocus™

Whelen's innovative single optic LED technology that can be customized and programmed as a spotlight or floodlight, with no moving parts.

Proclera® Silicone Optics

Whelen's innovative and efficient solution to distorted optical shape and fringe lighting. Proclera Optics feature 100% internal silicone optic technology, an increased ability to harness LED output and better direct and focus light, and a fully-filled square TIR™ optic to increase optic efficiency compared to a conventional circular TIR.

Rota-Beam™

Solid-state "rotating" technology, simulating the appearance of a rotating beacon without any moving parts or motors for long-life reliability.

Scan-Lock™

Whelen's advanced method of changing a products flash pattern. Scan-Lock utilizes an external wire to allow the user to cycle through the entire range of flash patterns, allowing for full customization.

Scan-Lock+™

The Scan-Lock+ app is the simplest way to change Whelen flash patterns. Designed for optimal convenience, Scan-Lock+ features an easy to use interface to utilize a Bluetooth connection. Download the Scan-Lock+ app and browse, test, and assign Whelen flash patterns right from your phone.

SmartLED®

Whelen's distinctive use of self-contained electronics to power and flash a particular LED product. These products require no external flasher, ballast, or power supply to operate.

SOLO™

Single-color LEDs

Split

Two-color lighthouse where each color fills half of the reflector

Standard Current

Lightbar functions are wired directly to the switching device and require switches that are matched to the current draw of the desired functions to be activated.

Steady-Lock®

A time-saving feature that allows Whelen's most popular warning lighthouses to be set to Steady automatically when used with a CenCom Core® system.

Super-LED®

Whelen's innovative LED technology

Sync

Sync provides the ability to connect multiple Whelen devices to flash together or in alternating patterns. Products with this capability allow the user to create coordinating flashing schemes.

TIR™ - (Total Internal Reflection)

Whelen's optimized use of the latest generation of LEDs and unique reflector optics to produce highly intense light that can be directional in nature.

TRIO™

Three-color interleaved LEDs with independent control of color one, color two, and color three

WeCad™

Engineered for optimal accessibility, WeCad lightbar designer delivers the ability to design custom Whelen lightbars with every available option. Adding R65 compliant options is simple, and a bill of materials will be generated to make ordering fast and easy.

WeCan®

Whelen's proprietary CAN-based communication system

WeCanX®

Whelen's smartest and most powerful CAN-based communication system. WeCanX provides true system synchronization, greater speed capabilities, expanded peripheral add-ons, and full support of diagnostics.

*Please contact Whelen for specific photometric information regarding CA Title 13 lighthouse and configurable lightbar product conformance.

BEACON SERIES

R316 & R416 Series



Features available across product family. May not apply to every model.



R316AF



R416AF

FEATURES

- 100% solid-state “rotating” technology simulates the appearance of a rotating beacon without any moving parts or motors
- Smooth polycarbonate outer dome
- Virtually no RFI/EMI radiation
- Powder-coated die-cast aluminum base
- Conformal coated electronics for moisture and vibration resistance
- Available in permanent, magnetic and magnetic/suction mounts

Model	Mount	Profile	LED Color	Dome Color	Amps	VDC	Patterns	Compliance	Dimensions				
R316*F	Permanent	Low	Single Amber or White	Amber	2.25	12	32 Scan-Lock™ With Varying Rotating Flash Rates	SAE Class 1	4” (102mm) H x 7.2” (183mm) Dia.				
R316*M	Magnetic												
R316*V	Magnetic/Suction		Split-Color Front/Rear Amber/White or Amber/Blue	Clear									
R316**F	Permanent												
R316**M	Magnetic												
R316**V	Magnetic/Suction												
R416*F	Permanent	High	Single Amber or White	Amber					2.25	12	32 Scan-Lock™ With Varying Rotating Flash Rates	SAE Class 1	4.8” (123mm) H x 6.4” (163mm) Dia.
R416*M	Magnetic												
R416*V	Magnetic/Suction		Split-Color Front/Rear Amber/White or Amber/Blue	Clear									
R416**F	Permanent												
R416**M	Magnetic												
R416**V	Magnetic/Suction												



* Replace symbol in model number with letter indicating desired color: A = Amber, C = White

The use of a magnetic or suction mounted beacon on the roof of a vehicle in motion is not recommended, and is at the sole discretion and risk of the user. Consult current price list for full list of available options at whelen.com/literature.

OPTIONS



L40BG
Branch Guard



MIRROR20
Mirror Mount Bracket



BBKT30
Shelf Mount Bracket



L360BGB
Branch Guard



L360PMKT
Pipe Mount Kit



L31 & L32 Series



Features available across product family. May not apply to every model.
*Please contact Whelen for specific photometric information regarding CA Title 13 lighthouse and configurable lightbar product conformance.



L31HAF



L32LAF

FEATURES

- Super-LED® beacon
- Powder-coated die-cast base
- Conformal coated electronics for moisture and vibration resistance
- Virtually no RFI/EMI radiation
- Alternately or simultaneously flash multiple patterns with up to 8 Whelen Super-LED 360° beacons (permanent mount)
- Smooth polycarbonate outer dome

Model	Mount	Profile	LED Color	Amps	VDC	Patterns	Control	Compliance	Dimensions
L31H*F	Permanent	High	Amber or White	4.0/Peak, 1.6/Avg	12	Permanent Mount 69 Built-In Scan-Lock™ Flash Patterns Plus 4 Simulated Rotating Patterns	Hi/Low Control	SAE Class 1	4" (102mm) H x 7.19" (182mm) Dia.
L31H*M	Magnetic						-		
L31H*V	Magnetic/ Suction		Hi/Low Control		CA T13				
L31HAF4	Permanent								
L31HAFCA	Magnetic		-		SAE Class 1				
L31HAMCA	Magnetic/ Suction								
L31HAVCA	Permanent		Amber/Blue		2.63" (67mm) H x 7.19" (182mm) Dia.				
L31HMF	Permanent		Amber/Green						
L31HPF	Permanent	Low	Amber or White	2.0/Peak, 0.8/Avg	24	Magnetic Mount SignalAlert™ 75 Only	Hi/Low Control	SAE Class 1	
L32L*F	Magnetic						-		
L32L*M	Magnetic/ Suction						Hi/Low Control		
L32L*V	Permanent								
L32LAF4	Permanent		Amber				Hi/Low Control		



* Replace symbol in model number with letter indicating desired color: A = Amber, C = White

Clear dome models are available. Consult price list for ordering information.

The use of a magnetic or suction mounted beacon on the roof of a vehicle in motion is not recommended, and is at the sole discretion and risk of the user. Consult current price list for full list of available options at whelen.com/literature.

OPTIONS



MIRROR20 Mirror Mount Bracket



BBKT30 Shelf Mount Bracket



L360BGB Branch Guard



L360PMKT Pipe Mount Kit

L41 Series



Features available across product family. May not apply to every model.



L41AP

FEATURES

- Super-LED® beacon
- Medium-profile, smooth polycarbonate outer dome
- Fully encapsulated for moisture, vibration, and corrosion resistance
- Powder-coated die-cast aluminum base
- Available in permanent, magnetic and magnetic/suction mounts
- Virtually no RFI/EMI radiation

OPTION



L40BG
Branch Guard

Model	Mount	LED Color	Amps	Patterns	Compliance	Dimensions
L41*P	Permanent	Amber or White	1.5/Peak, 0.6/Avg @ 12VDC	SignalAlert™ 75 Default	SAE Class 1	4.75" (121mm) H x 6.44" (164mm) Dia.
L41*M	Magnetic		.75/Peak, 0.3/Avg @ 24VDC	25 Selectable, Including Steady-Burn		
L41*V	Magnetic/Suction					



* Replace symbol in model number with letter indicating desired color: A = Amber, C = White

Clear dome models are available. Consult price list for ordering information.

The use of a magnetic or suction mounted beacon on the roof of a vehicle in motion is not recommended, and is at the sole discretion and risk of the user. Consult current price list for full list of available options at whelen.com/literature.

L50 Series



Features available across product family. May not apply to every model.

FEATURES

- Super-LED® beacon
- Twist-off polycarbonate dome
- Available in permanent and magnetic mount
- Virtually no RFI/EMI radiation
- Polycarbonate base



L51AM



L51AP

Model	Mount	Encapsulated	LED Color	Amps	VDC	Patterns	Compliance	Dimensions
L51*P	Permanent	Yes	Amber or White	1.5/Peak, 0.6/Avg	12	25 Scan-Lock™	SAE Class 1	3.75" (95mm) H x 5" (127mm) Dia.
L51*M	Magnetic							
L53AP	Permanent	No	Amber	0.4/Peak, 0.16/Avg		15 Scan-Lock™	SAE Class 3	
L53AM	Magnetic					75 SignalAlert™ Only		



* Replace symbol in model number with letter indicating desired color: A = Amber, C = White

The use of a magnetic or suction mounted beacon on the roof of a vehicle in motion is not recommended, and is at the sole discretion and risk of the user. Consult current price list for full list of available options at whelen.com/literature.



OPTION

MIRROR15
Mirror Mount Bracket



L10 Series

5YR 12 24 SYNC SCAN LOCK SAE CLASS 1 SOLO DUO

Features available across product family. May not apply to every model.



L10LAP



L10HFP

FEATURES

- Super-LED® beacon
- High and low-dome models
- Polycarbonate base
- Available in permanent, magnetic and magnetic/suction mounts
- Virtually no RFI/EMI radiation
- Available in SOLO™ and DUO™

Model	Mount	Profile	LED Color	Amps	VDC	Patterns	Compliance	Dimensions
L10H#P	Permanent/ Pipe/Hook	High	DUO Amber/White, Amber/Blue, or Amber/Green	1.0/Peak, 0.4/Avg	12	18 Scan-Lock™	SAE Class 1 (Amber)	6.4" (163mm) H x 6.3" (161mm) Dia.
L10L#P		Low						4.9" (125mm) H x 6.3" (161mm) Dia.
L10H*P		High	Amber or White		24			6.4" (163mm) H x 6.3" (161mm) Dia.
L10HAP4								
L10HAM	Magnetic	High	Amber		12			6.4" (163mm) H x 6.3" (161mm) Dia.
L10HAV	Magnetic/ Suction							
L10L*P	Permanent/ Pipe/Hook	Low	Amber or White		24			4.9" (125mm) H x 6.3" (161mm) Dia.
L10LAP4								
L10LAM	Magnetic		Amber		12			
L10LAV	Magnetic/ Suction							



* Replace symbol in model number with letter indicating desired color: A = Amber, C = White

Replace symbol in model number with letter indicating color combo desired: F = Amber/White, M = Blue/Amber, P = Amber/Green

Clear dome models are available. Consult price list for ordering information.

The use of a magnetic or suction mounted beacon on the roof of a vehicle in motion is not recommended, and is at the sole discretion and risk of the user. Consult current price list for full list of available options at whelen.com/literature.

OPTIONS



MIRROR20
Mirror Mount Bracket



BBKT20
Shelf Mount Bracket



BGH
Branch Guard High



BGL
Branch Guard Low



DH2000A
Fresnel Dome High



DL2000A
Fresnel Dome Low

L21 & L22 Series



Features available across product family. May not apply to every model.



L21LAM



L22HAP

FEATURES

- Super-LED® Beacon
- Fully encapsulated for moisture, vibration, and corrosion resistance
- Polycarbonate base
- Available in combination (perm/pipe/"J" hook), magnetic, and magnetic/suction mounts
- Virtually no RFI/EMI radiation

Model	Mount	Profile	LED Color	Amps	VDC	Patterns	Compliance	Dimensions					
L21H*P	Perm/Pipe/"J" Hook	High	Amber or White	1.5/Peak, 0.6/Avg	12	25 Scan-Lock™	SAE Class 1 (Amber)	6.81" (172mm) H x 6.44" (163mm) Dia.					
L21H*M	Magnetic				24								
L21H*V	Magnetic/Suction												
L21H*P4	Perm/Pipe/"J" Hook	Low		0.75/Peak, 0.6/Avg	24			SignalAlert™ 75 Default	5.31" (134mm) H x 6.44" (163mm) Dia.				
L21L*P	Perm/Pipe/"J" Hook				12								
L21L*M	Magnetic				24								
L21L*V	Magnetic/Suction												
L21L*P4	Perm/Pipe/"J" Hook												
L22H*P	Perm/Pipe/"J" Hook	High		0.75/Peak, 0.6/Avg	12			6.81" (172mm) H x 6.44" (163mm) Dia.					
L22H*M	Magnetic												
L22H*V	Magnetic/Suction												
L22L*P	Perm/Pipe/"J" Hook	Low										5.31" (134mm) H x 6.44" (163mm) Dia.	
L22L*M	Magnetic												
L22L*V	Magnetic/Suction												



* Replace symbol in model number with letter indicating desired color: A = Amber, C = White
Clear dome models are available. Consult price list for ordering information.

The use of a magnetic or suction mounted beacon on the roof of a vehicle in motion is not recommended, and is at the sole discretion and risk of the user.
Consult current price list for full list of available options at whelen.com/literature.

OPTIONS



MIRROR20
Mirror Mount Bracket



BBKT20
Shelf Mount Bracket



BGH
Branch Guard High



BGL
Branch Guard Low



DH2000A
Fresnel Dome High




DL2000A
Fresnel Dome Low





WHELEN CO. INC.
L21E SERIES
MADE IN THE U.S.A.

 **WARNING:** This product may contain chemicals known to the State of California to cause cancer and birth defects or other reproductive harm. For more information, visit whelen.com/regulatory.

WHELEN
MANUFACTURED IN AMERICA

LIGHTBARS

Freedom[®] IV DUO[™] & DYAD[™] Series

Download WeCad[™] for models and options



2YR 5YR 10YR 12" LC SC WeCad X SCAN LOCK HARD COAT SAE CLASS 1 SOLO DUO+

Features available across product family. May not apply to every model.



F4W4AAAA with directional modules

FEATURES

- Linear Super-LED[®] technology
- Advanced Thermal Design improves LED performance during extended operation
- Aluminum top repels hail and protects against other environmental damages
- Extruded aluminum platform
- Center dividers with liquid injection molded seals protect internal components from water infiltration
- One piece uni-dome construction with a single sealing point assures lightbar integrity in all weather conditions
- Plug & Play into Whelen WeCan[®] products
- 16' exit cable included
- Available with Clear, Smoked, or Color lens
- Brake/Tail/Turn option available
- See page 81 for switching options



WARNING: This product may contain chemicals known to the State of California to cause cancer and birth defects or other reproductive harm. For more information, visit whelen.com/regulatory.

Models	Technology	Modules	LED Color	VDC	Compliance	Dimensions	Length
F4X4****	Low Current	4 Single-Color	Blue, Amber or White	12	SAE Class 1	3.75" (95mm) H x 12.5" (318mm) W	44.5" (113cm)
F4X8****							49.25" (125cm)
F4X2****							55" (140cm)
F4X0****							60" (152cm)
F4X7****							72" (183cm)
F4W4****	WeCan®	4 Single or Two-Color Over/Under	Blue, Amber and/or White				44.5" (113cm)
F4W8****							49.25" (125cm)
F4W2****							55" (140cm)
F4W0****							60" (152cm)
F4W7****							72" (183cm)
K4W4****	WeCanX®	4 Single or Two-Color Over/Under	Red, Blue, Amber and/or White				44.5" (113cm)
K4W8****							49" (125cm)
K4W2****							55" (140cm)
K4W0****							60" (152cm)
K4W7****							72" (183cm)
K424####		4 DUO™	Amber/White, Blue/Amber, or Amber/Green				44.5" (113cm)
K428####							49" (125cm)
K422####							55" (140cm)
K420####							60" (152cm)
K427####							72" (183cm)
F424####	WeCan						44.5" (113cm)
F428####							49" (125cm)
F422####							55" (140cm)
F420####							60" (152cm)
F427####							72" (183cm)



* Replace symbol in model number with letter indicating desired color: A = Amber, B = Blue C = White, R = Red
Replace symbol in model number with letter indicating color combo desired: F = Amber/White, M = Blue/Amber, P = Amber/Green
Consult current price list for full list of available options at whelen.com/literature.

OPTIONS



F4TL6
(2) 6-LED Take-Downs



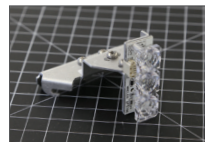
F4DL*
(1) Long
12-LED Lighthouse



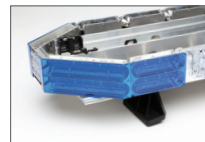
F4DS*
(1) Short 6-LED Lighthouse



F4A6
(2) 6-LED Alley Lights



F4A3
(2) 3-LED Alley Lights



Color Filters, Corner,
Long & Short

Liberty™ II Series

2YR 5YR 10YR 12 LC SC WeCan X CRUISE HARD COAT SAE CLASS 1 PROCLERA SOLO DUO+

Download WeCad™ for models and options



Features available across product family. May not apply to every model.

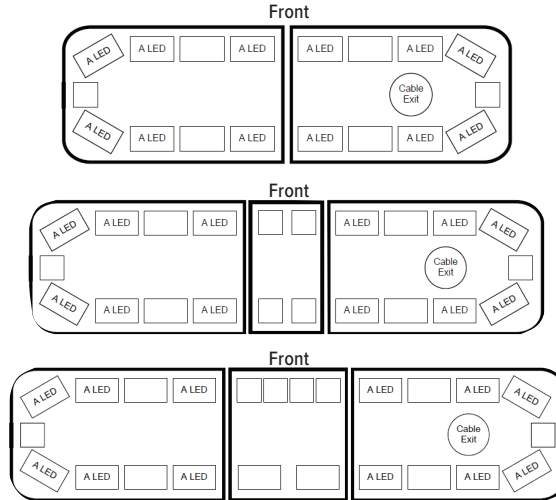
FEATURES

- Advanced Thermal Design improves LED performance during extended operation
- Aluminum top repels hail and protects against other environmental damages
- Extruded aluminum platform
- Center dividers with liquid injection molded seals protect internal components from water intrusion
- One piece uni-dome construction with a single sealing point assures lightbar integrity in all weather conditions
- Proclera® Silicone Optics (available in take-down lights)
- Plug & Play into Whelen WeCan® products
- Available with Clear, Smoked, or Color lens
- Brake/Tail/Turn option available
- See page 81 for switching options
- Pre-configured models come with mounting bracket, MKEZ29

IW2AAAA with Directional Modules



Pre-Configured Lightbars



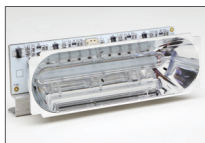
Model	Design	Technology	LED Color	VDC	Compliance	Dimensions	Length
IX48A6	Pre-Configured (See Diagrams)	SOLO™	Amber	12	SAE Class 1	2.5" (64mm) H x 11.31" (287mm) W	44" (110cm)
IX54A6							48" (123cm)
IX59A6							54" (136cm)
IX4****	Blue, Amber or White		44" (110cm)				
IX8****			48" (123cm)				
IX2****			54" (136cm)				
IW4****	WeCan®	Blue, Amber or White	44" (110cm)				
IW8****			48" (123cm)				
IW2****			54" (136cm)				
IB4****	Configurable	DUO+™	Blue, Amber and/or White				44" (110cm)
IB8****							48" (123cm)
IB2****							54" (136cm)
IB4####							44" (110cm)
IB8####							48" (123cm)
IB2####							54" (136cm)



* Replace symbol in model number with letter indicating desired color: A = Amber, B = Blue, C = White

Replace symbol in model number with letter indicating color combo desired: F = Amber/White, M = Blue/Amber
Consult current price list for full list of available options at whelen.com/literature.

OPTIONS



IWDL*
(1) Long 6-LED Lighthead



IWDS*
(1) Short 3-LED Lighthead



ITL12
(2) Long 12-LED
Take-Downs



ITS3
(2) Short 3-LED
Take-Downs



IA3
(2) 3-LED Alley Lights



Color Filters, Corner,
Long And Short



Edge® 9X Series



Download WeCad™ for models and options



Features available across product family. May not apply to every model.



9SX8AAAA

FEATURES

- Powered by WeCanX® technology
- DUO™ Linear12™ LED and DUO Linear6™ LED Warning & Scene Take-Down/Alley
- Hard-coated lenses resist environmental damage from sand, sun, salt, and road chemicals
- Photocell included
- Passenger side cable exit
- Advanced Thermal Design improves LED performance during extended operation
- Molded polycarbonate Black top repels hail and protects against other environmental damages
- Standard mounting feet

Model	LED Color	VDC	Compliance	Dimensions	Length
EDGE 9SX Series					
9SX5####	4 Two-Color Amber, Blue and/or White	12/24	SAE Class 1 Certified	Short: 1.86" (48mm) H x 11.52" (293mm) W	25" (64cm)
9SX3####					31" (79cm)
9SX6####					36" (92cm)
9SX4####					43" (110cm)
9SX8####					48" (123cm)
9SX2####					54" (136cm)
9SX0####					59" (150cm)
EDGE 9TX Series					
9TX5####	4 Two-Color Amber, Blue and/or White	12/24	SAE Class 1 Certified	Tall: 2.71" (69mm) H x 11.52" (293mm) W	25" (64cm)
9TX3####					31" (79cm)
9TX6####					36" (92cm)
9TX4####					43" (110cm)
9TX8####					48" (123cm)
9TX2####					54" (136cm)
9TX0####					59" (150cm)

OPTIONS

Models	Description
9SXD#	One DUO™ Color Long Super-LED® Lighthead, Red, Blue, Amber and/or White
9SXD***	One Long Super-LED Lighthead, Split-Color Primary Warning with Full-Color Secondary Warning for Center Mount on 31", 43" and 54" Lightbars Only
9SXTW*	One DUO Color Super-LED Take-Down or Alley Light, Amber/White, Blue/White, White/White or Red/White
9SXT	Super-LED® Take-Down or Alley Lights, White, Pair
9TXDL#	One DUO Color Long Super-LED Lighthead, Red, Blue, Amber and/or White
9TXDL***	One Long Super-LED Lighthead, Split-Color Primary Warning with Full-Color Secondary Warning for Center Mount on 31", 43" and 54" Lightbars Only
9TXTW*	One DUO Color Super-LED Take-Down or Alley Light, Amber/White, Blue/White, White/White or Red/White
9TXT	Super-LED® Take-Down or Alley Lights, White, Pair
9SXDCBL	Driver Side Cable Exit
CCP	Core™ Control Point for use with WeCanX® Devices when NOT using CenCom Core®



* Replace symbol in model number with letter indicating color desired: A = Amber, B = Blue, C = White, R = Red
 # Replace in model number with letter indicating color desired: D = Red/White, E = Blue/White, F = Amber/White, M = Blue/Amber
 Consult current price list for full list of available options at whelen.com/literature

Legacy® Series

2YR 5YR 10YR 12 DIAG WeCad WE CAN CRUISE HARD COAT R65 CLASS 1 SAE CLASS 1 PROCLERA SOLO DUO+

Download WeCad™ for models and options



Features available across product family. May not apply to every model.



FEATURES

- Advanced Thermal Design improves LED performance during extended operation
- Aluminum top repels hail and protects against other environmental damages
- Extruded aluminum platform
- Center dividers with liquid injection molded seals protect internal components from water intrusion
- One piece uni-dome construction with a single sealing point assures lightbar integrity in all weather conditions
- Proclera® Silicone Optics (available in take-down lights)
- Plug & Play into Whelen WeCan® products
- Available with Clear or Smoked lens
- Brake/Tail/Turn option available
- See page 81 for switching options

Model	Technology	LED Color	VDC	Compliance	Dimensions	Length
ES4****	SOLO™	Blue, Amber or White	12	SAE Class 1 and R65 Class 1	1.63" (41mm) H x 11.31" (287mm) W	43.25" (110cm)
ES8****						48" (123cm)
ES2****						53.75" (137cm)
GS4****						43.25" (110cm)
GS8****						48" (123cm)
GS2****						53.75" (137cm)
EB4****	DUO+™	Blue, Amber and/or White				43.25" (110cm)
EB4####						43.25" (110cm)
EB8****						48" (123cm)
EB8####						48" (123cm)
EB2****						53.75" (137cm)
EB2####						53.75" (137cm)
GB4****						43.25" (110cm)
GB4####						
GB8****						48" (123cm)
GB8####						
GB2****						53.75" (137cm)
GB2####						



* Replace symbol in model number with letter indicating desired color: A = Amber, B = Blue, C = White
Replace symbol in model number with letter indicating color combo desired: F = Amber/White, M = Blue/Amber
Consult current price list for full list of available options at whelen.com/literature.

OPTIONS



GBA
(2) Alley Lights



GBTS
(2) Short 3-LED
Take-Downs



GBTL
(2) Long 6-LED
Take-Downs

Justice® Series

5YR 10YR 12 LC HARD COAT X SC SAE CLASS 1 ISOLO™

Features available across product family. May not apply to every model.

Download WeCad™ for models and options



FEATURES

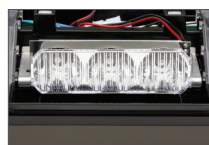
- Advanced Thermal Design improves LED performance during extended operation
- Extruded aluminum platform and polycarbonate base
- Easily upgraded or serviced in the field
- Plug & Play into Whelen WeCan® products
- Available with Clear, Smoked, or Color lens
- Brake/Tail/Turn option available
- See page 81 for switching options
- Pre-configured models come with mounting bracket, MKEZ29

Model	Design	Modules	LED Color	VDC	Compliance	Dimensions	Length
JEF8AMB	Pre-Configured (See Diagrams)	4 Corner Linear-LED [®] and 14 CON3 [™]	Amber	12	SAE Class 1	2.25" (57mm) H x 12" (305mm) W	50" (127cm)
JEF2AMB		4 Corner Linear-LED and 16 CON3					56" (143cm)
JC4***	Configurable	4 Corner Linear-LED	Blue, Amber and/or White				44" (112cm)
JC8***							50" (127cm)
JC2***							56" (143cm)
JE4***							44" (112cm)
JE8***							50" (127cm)
JE2***							56" (143cm)



* Replace symbol in model number with letter indicating desired color: A = Amber, B = Blue, C = White
Consult current price list for full list of available options at whelen.com/literature.

OPTIONS



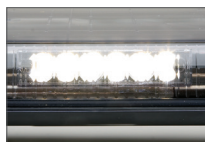
JDC*
(1) CON3® Module With
Spreader Optics



JDL*
(1) Full LIN6™



JALF1
(2) LR11 Alley Lights

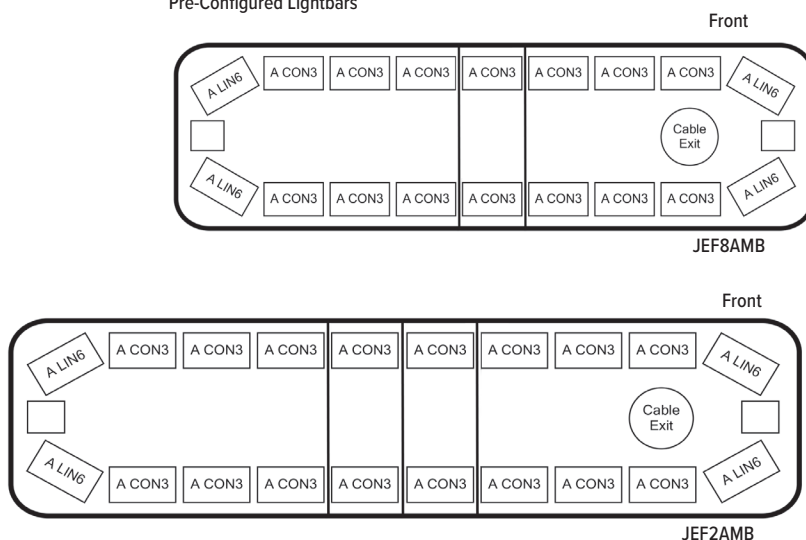


JWLLD2
(2) Work Lights



JATLS1 (2) LR11
Take-Down Lights

Pre-Configured Lightbars



Towman's™ Series



Download WeCad™ for models and options



Features available across product family. May not apply to every model.

TOWMAN'S™ JUSTICE® LIGHTBARS



JF01AAAA

- JF01AAAA has OEM "U" bracket mounting with plug & play harness
- JF02AAAA has OEM "U" bracket mounting with plug & play harness plus identification light

TOWMAN'S FREEDOM® IV SERIES



F40BAAAA

TOWMAN'S LIBERTY™ II SERIES

PROCLERA
SILICONE OPTICS



IW0BAAAA

TOWMAN'S JUSTICE COMPETITOR™ SERIES



JF0BAAAA

TOWMAN'S CENTURY™ SERIES



CW0BAAAA

FEATURES

- SAE Class 1 Certified
- Liberty™ II models feature Whelen's Proclera® Silicone Optics for increased clarity (available in work lights)
- Front/rear warning lights are separately controlled
- Includes rear-facing LED brake/tail/turn signals
- 3 adjustable slide bolt mounts
- Many options available, consult price list and/or WeCad™ software
- 12 VDC

Model	Series	Modules	Inboard Warning Lights	Base	Lens Color	Patterns	Dimensions	Length
F40BAAAA	Freedom® IV	4 Linear-LED® Corners, 2 Super-LED® Work Lights, 2 LED Brake/Tail/ Turn Lights	8 Amber Economy LED (2 Front/6 Rear)	Extruded Aluminum	Clear	12 Scan-Lock™	3.75" (94mm) H x 12.5" (318mm) W	60" (154cm)
IW0BAAAA	Liberty II		6 Amber Linear-LED (2 Front/4 Rear)			WeCan®	2.5" (64mm) H x 11.31" (287mm) W	
CW0BAAAA	Century™		4 Amber Linear-LED (2 Front/2 Rear)	Extruded Aluminum I-Beam	Color Lenses Standard	52 Scan-Lock	2.25" (57mm) H x 12" (304mm) W	62.37" (158cm)
JF0TAAAA	Justice®	Optional*	Black Polycarbonate Base on Extruded Aluminum Platform	Clear Outer Standard, Color Available				
JF0BAAAA		6 Amber CON3™*						
JF0DAAAA		Amber CON3* & Traffic Advisor™						
JF01AAAA		6 Amber CON3 & B/T/T						
JF02AAAA		6 Amber CON3 & B/T/T						
JF0FAAAA		Work Lights Added			14 Amber CON3 & B/T/T			

* Note: Can also add options.

OPTIONS

Liberty II Options		Century Options		Freedom IV Options		Justice Options	
Model	Description	Model	Description	Model	Description	Model	Description
IWDLA	Long 6 Super-LED Lighthead, Amber	CEDLXA	One LIN12", Amber	F4EDLA	One Single-Color Long Economy DYAD™ Lighthead, Amber	JDCA	One CON3
IWDSA	Short 3 Super-LED Lighthead, Amber	CDT6A	One TIR6", Amber				

MINI LIGHTBARS

Responder® HD Series

5YR 12 SC SCAN LOCK SYNC HARD COAT SAE CLASS 1 SOLO DUO

Features available across product family. May not apply to every model.



R10HDPA



R10HDVA

FEATURES

- Universal permanent mount easily retrofits most competitive model footprints
- Permanent bolt mount supplied with 6" pigtail cable
- Magnetic and magnetic/suction mounts supplied with 10' straight cord and cigar plug with built in On/Off switch with LED "On" indicator and pattern control switch

Model	Technology	Mount	Base	LED Color	Amps	VDC	Patterns	Compliance	Dimensions
R10HDP*	Super-LED®	Permanent	Aluminum	Amber or White	9.0/Peak, 3.6/Avg	12	55 Scan-Lock™	SAE Class 1	17.25" (438mm) L x 5.13" (130mm) H x 6.31" (160mm) W
R10HDM*		Magnetic					75 SignalAlert™		
R10HDV*		Magnetic/Suction							



* Replace symbol in model number with letter indicating desired color: A = Amber, C = White
The use of a magnetic or suction mounted product on the roof of a vehicle in motion is not recommended, and is at the sole discretion and risk of the user.



Responder® R1LP Series

5YR 12 SCAN LOCK SYNC SC HARD COAT SAE CLASS 1 TITLE 13 ISOLO™

Features available across product family. May not apply to every model.
*Please contact Whelen for specific photometric information regarding CA Title 13 lighthead and configurable lightbar product conformance.



R1LPPA

FEATURES

- Super-LED® low-profile conical CON3™ mini lightbar
- Polycarbonate dome
- Available with extruded aluminum base or polycarbonate base
- Available in permanent, magnetic and magnetic/suction mounts



R1LPVF

Model	Technology	Mount	Base	LED Color	Dome Color	Amps	VDC	Patterns	Compliance	Dimensions	
R1LPPA	CON3 Super-LED	Permanent	Poly-carbonate	Amber	Amber	3.0/ Peak, 1.2/Avg	12	55 Scan-Lock™ Including 4 Simulated Rotating Patterns (Perm Mount Only) ActionScan™ Default For Magnetic Mount Only	SAE Class 1	17" (431mm) L x 2.88" (73mm) H x 6.31" (160mm) W	
R1LPPCA					Clear				SAE Class 1 and CA T13		
R1LPPACA					Amber						
R1LPMA		Magnetic			Aluminum				Amber	SAE Class 1	17" (431mm) L x 3.25" (82mm) H x 6.31" (160mm) W
R1LPMCA									Clear		
R1LPVA		Magnetic/ Suction			Amber						
R1LPVCA					Clear						
R1LPHPA		Permanent	Aluminum		Amber				17" (431mm) L x 3.25" (82mm) H x 6.31" (160mm) W		
R1LPHPCA					Clear						
R1LPHMA		Magnetic			Amber						
R1LPHMCA					Clear						
R1LPHVA		Magnetic/ Suction			Amber						
R1LPHVCA					Clear						
R1LPPF		Permanent	Poly-carbonate	Split-Color Amber/ White	Clear				17" (431mm) L x 2.88" (73mm) H x 6.31" (160mm) W		
R1LPMF		Magnetic									
R1LPVF		Magnetic/ Suction									
R1LPPP		Permanent									Split-Color Amber/ Green



Clear dome models are available. Consult price list for ordering information.

The use of a magnetic or suction mounted beacon on the roof of a vehicle in motion is not recommended, and is at the sole discretion and risk of the user.

Responder® R2LP Series

5YR 12 24 SC SCAN LOCK SYNC HARD COAT SAE CLASS 1 TITLE 13 SOLO DUO+

Features available across product family. May not apply to every model.
*Please contact Whelen for specific photometric information regarding CA Title 13 lighthouse and configurable lightbar product conformance.



R2LPMF



RDLPPAB DUO™

FEATURES

- Super-LED® low-profile linear LIN6™ mini lightbar
- Polycarbonate dome
- Available with extruded aluminum base or polycarbonate base
- Available in permanent, magnetic and magnetic/suction mounts
- DUO™ model features two-color interleaved LEDs in the same module allowing for individual control of each color

Model	Technology	Mount	Base	LED Color	Dome Color	Amps	VDC	Patterns	Compliance	Dimensions						
R2LPPA	LIN6 Super-LED	Permanent	Poly-carbonate	Amber	Amber		12	55 Scan-Lock™ Including 4 Simulated Rotating Patterns (Perm Mount Only)	SAE Class 1	17" (431mm) L x 2.88" (73mm) H x 6.31" (160mm) W						
R2LPPCA					Clear				SAE Class 1 and CA T13							
R2LPPACA					Amber											
R2LPPA4					Amber											
R2LPMA		Magnetic			Amber	6.0/ Peak, 2.4/ Avg	24									
R2LPMCA					Clear											
R2LPVA		Magnetic/ Suction			Amber											
R2LPVCA					Clear											
R2LPHPA		Permanent	Aluminum		Amber	6.0/ Peak, 2.4/ Avg	12	ActionScan™ Default For Magnetic Mount Only	SAE Class 1	17" (431mm) L x 3.25" (82mm) H x 6.31" (160mm) W						
R2LPHPCA					Clear											
R2LPHMA		Magnetic			Amber											
R2LPHMCA					Clear											
R2LPHVA		Magnetic/ Suction			Amber											
R2LPHVCA					Clear											
R2LPPF		Permanent	Poly-carbonate	Split-Color Amber/White	Clear											
R2LPMF		Magnetic														
R2LPVF		Magnetic/ Suction														
R2LPPM		Permanent		Split-Color Amber/Blue								17" (431mm) L x 2.88" (73mm) H x 6.31" (160mm) W				
R2LPPP				Split-Color Amber/Green												
RDLPPAB	DUO LIN6 Super-LED			DUO Amber/ Blue				33 Scan-Lock								
RDLPPAG				DUO Amber/ Green												



Clear dome models are available. Consult price list for ordering information.
The use of a magnetic or suction mounted beacon on the roof of a vehicle in motion is not recommended, and is at the sole discretion and risk of the user.

Mini Century™ Series



Features available across product family. May not apply to every model.



FEATURES

- Extruded aluminum base
- Standard current switching with Scan-Lock™ flash patterns and pattern override
- Low-profile with compression fit gasket for superior moisture resistance
- Pre-configured lightbars

Model	Technology	Mount	Base	LED Color	Dome Color	Amps	VDC	Patterns	Compliance	Dimensions				
MC11PA	Corners: Linear Super-LED® Inboards: TIR6™ Super-LED	Permanent	Extruded Aluminum Platform	Amber		3.6/Peak, 2.2/Avg	12	17 Scan- Lock	SAE Class 1	11.5" (292mm) L x 2.4" (61mm) H x 7.74" (197mm) W				
MC11MA		Magnetic												
MC11SA		0.75" (19mm) Stud												
MC16PA		Permanent		Amber	Amber	4.8/Peak, 3.0/Avg				16.56" (421mm) L x 2.4" (61mm) H x 7.74" (197mm) W				
MC16MA		Magnetic												
MC16VA		Magnetic/Suction												
MC16SA		0.75" (19mm) Stud		Amber/ White	Clear									
MC16PF		Permanent												
MC16MF		Magnetic												
MC16VF		Magnetic/Suction												
MC16SF		0.75" (19mm) Stud		Amber	Amber	7.2/Peak 4.4/Avg				23.25" (591mm) L x 2.4" (61mm) H x 7.74" (197mm) W				
MC23PA		Permanent												
MC23MA		Magnetic												
MC23VA		Magnetic/Suction												
MC23SA		0.75" (19mm) Stud		Amber/ White	Clear									
MC23MF		Magnetic												
MC23PF		Permanent												
MC23VF		Magnetic/Suction												



The use of a magnetic or suction mounted product on the roof of a vehicle in motion is not recommended, and is at the sole discretion and risk of the user. Clear dome models are available, consult price list for ordering information.

Mini Justice® Series

5YR 12 SC SCAN LOCK HARD COAT R65 CLASS 1 SAE CLASS 1 SOLO™

Features available across product family. May not apply to every model.

Download WeCad™ for models and options



FEATURES

- Super-LED® CON3™ modules and Linear Super-LED corners
- Permanent mount supplied with 15' cable
- Magnetic and magnetic/suction mounts supplied with 10' cord and cigar plug with built-in On/Off switch with LED "On" indicator and pattern control selection switch
- Low-profile, only 2.25" high

Model	Technology	Mount	Base	Dome Color	Amps	VDC	Patterns	Compliance	Dimensions				
MJY****P	Linear Super-LED	Permanent	Polycarbonate On Extruded Aluminum Platform	Clear	4.0/Peak, 1.6/Avg (4 corners)	12	95 Scan-Lock™	SAE Class 1 and R65 Class 1	22" (558mm) L x 2.25" (57mm) H x 12" (304mm) W				
MJY****M		Magnetic											
MJY****V		Magnetic/Suction											
MJEG1A	Linear & CON3 Super-LED (4 Amber CON3)	Magnetic			6.0/Peak, 2.4/Avg								
MJEP1A		Permanent											



* Replace symbol in model number with letter indicating desired color: A = Amber, C = White
The use of a magnetic or suction mounted product on the roof of a vehicle in motion is not recommended, and is at the sole discretion and risk of the user.
Consult current price list for full list of available options at whelen.com/literature.

OPTIONS



JDC*
(1) CON3 Module With Spreader Optics

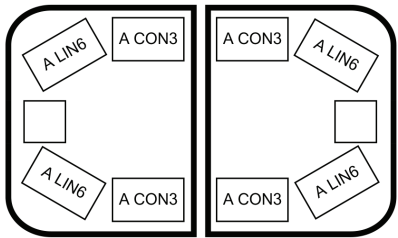


JDH*
(1) LTR3™ Take-Down



MJTDALL1
(4) LR11 Lights, 2 Alley Lights, 2 Take-Downs

Pre-Configured Lightbar



MJEP1A

Mini Freedom® IV Series

5YR 12 SC SCAN LOCK HARD COAT R65 CLASS 1 SAE CLASS 1 SOLO™

Download WeCad™ for models and options



Features available across product family. May not apply to every model



F4MAAAAP with directional modules

FEATURES

- Linear Super-LED® technology
- Advanced Thermal Design improves LED performance during extended operation
- Aluminum top repels hail and protects against other environmental damages
- Extruded aluminum platform
- Center dividers with liquid injection molded seals protect internal components from water infiltration
- One piece uni-dome construction with a single sealing point assures lightbar integrity in all weather conditions
- Plug & Play into Whelen WeCan® products
- Magnetic mount supplied with 10' cord and cigar plug with built-in On/Off switch with LED "On" indicator and pattern control selection switch

Model	Technology	Design	Mount	Base	LED Color	Dome Color	Amps	VDC	Patterns	Compliance	Dimensions
F4MAAAAP	Linear Super-LED	Pre-Configured (See Diagram)	Permanent	Extruded Aluminum I-Beam	Amber	Clear	4	12	67 Scan-Lock™ and SignalAlert™ 75 Default for Magnetic Mount	SAE Class 1 and R65 Class 1	21.5" (546mm) L x 3.75" (95mm) H x 12.5" (318mm) W
F4M****P		Configurable	Magnetic		Amber or White						
F4M****M			Permanent								
F4M*O*OF	Front Facing Linear Super-LED										

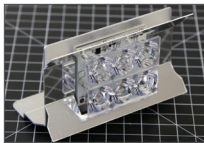


* Replace symbol in model number with letter indicating desired color: A = Amber, C = White
The use of a magnetic or suction mounted product on the roof of a vehicle in motion is not recommended, and is at the sole discretion and risk of the user. Consult current price list for full list of available options at whelen.com/literature.

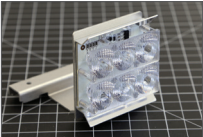
OPTIONS



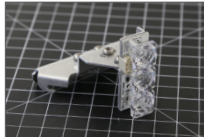
F4DL*
(1) Long 12-LED Lighthead



F4MTL6
(2) 6-LED Take-Downs

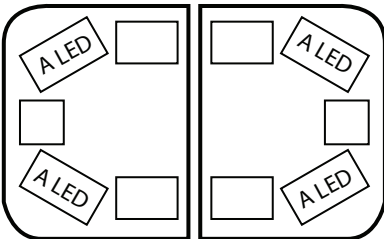


F4MA6
(2) 6-LED Alley Lights



F4MA3
(2) 3-LED Alley Lights

Pre-Configured Lightbar



F4MAAAAP

Mini Edge® 9X Series



Features available across product family. May not apply to every model.

Download WeCad™ for models and options



9TX5FFFF

FEATURES

- Powered by WeCanX® technology
- DUO™ Linear12™ LED and DUO Linear6™ LED Warning & Scene Take-Down/Alley
- Hard-coated lenses resist environmental damage from sand, sun, salt, and road chemicals
- Photocell included
- Passenger side cable exit
- Advanced Thermal Design improves LED performance during extended operation
- Molded polycarbonate Black top repels hail and protects against other environmental damages
- Standard mounting feet

Model	LED Color	VDC	Compliance	Dimensions	Length
EDGE 9SX Series					
9SX5####	4 Two-Color Amber, Blue and/or White	12/24	SAE Class 1 Certified	Short: 1.86" (48mm) H x 11.52" (293mm) W	25" (64cm)
EDGE 9TX Series					
9TX5####	4 Two-Color Amber, Blue and/or White	12/24	SAE Class 1 Certified	Tall: 2.71" (69mm) H x 11.52" (293mm) W	25" (64cm)

OPTIONS

Models	Description
9SXD#	One DUO™ Color Long Super-LED® Lighthouse, Red, Blue, Amber and/or White
9SXTW*	One DUO Color Super-LED Take-Down or Alley Light, Amber/White, Blue/White, White/White or Red/White
9SXT	Super-LED® Take-Down or Alley Lights, White, Pair
9TXD#	One DUO Color Long Super-LED Lighthouse, Red, Blue, Amber and/or White
9TXTW*	One DUO Color Super-LED Take-Down or Alley Light, Amber/White, Blue/White, White/White or Red/White
9TXT	Super-LED® Take-Down or Alley Lights, White, Pair
9SXDCBL	Driver Side Cable Exit
CCP	Core™ Control Point for use with WeCanX® Devices when NOT using CenCom Core®



* Replace symbol in model number with letter indicating color desired: A = Amber, B = Blue, C = White, R = Red
 # Replace in model number with letter indicating color desired: D = Red/White, E = Blue/White, F = Amber/White, M = Blue/Amber
 Consult current price list for full list of available options at whelen.com/literature

Mini Liberty™ II Series

5YR 12 SC SCAN LOCK HARD COAT R65 CLASS 1 SAE CLASS 1 PROCLERA SOLO

Download WeCad™ for models and options



Features available across product family. May not apply to every model



IT9AAAAP with directional modules

FEATURES

- Linear-LED® technology
- Advanced Thermal Design improves LED performance during extended operation
- Aluminum top repels hail and protects against other environmental damages
- Extruded aluminum platform
- Center dividers with liquid injection molded seals protect internal components from water intrusion
- One piece uni-dome construction with a single sealing point assures lightbar integrity in all weather conditions
- Proclera® Silicone Optics (available in take-down lights)
- Available with Clear, Smoked, or Color domes
- Permanent mount features a low-profile mounting kit
- Magnetic mount includes 90 lb pull magnets
- Magnetic and magnetic/suction mounts supplied with 10' cord and cigar plug with built-in On/Off switch with LED "On" indicator and pattern control selection switch

Model	Design	Mount	LED Color	VDC	Patterns	Compliance	Dimensions
IT9AAAAP	Pre-Configured (See Diagram)	Permanent	Amber	12	67 Scan-Lock™ and SignalAlert™ 75 Default for Magnetic Mount	SAE Class 1 and R65 Class 1	19.3" (490mm) L x 2.5" (64mm) H x 11.31" (287mm) W
IT9****P	Configurable		Magnetic				
IT9****M							
IT9****V		Magnetic/Suction					



* Replace symbol in model number with letter indicating desired color: A = Amber, C = White
The use of a magnetic or suction mounted product on the roof of a vehicle in motion is not recommended, and is at the sole discretion and risk of the user.
Consult current price list for full list of available options at whelen.com/literature.

OPTIONS



IWDS*
(1) Short Lighthouse

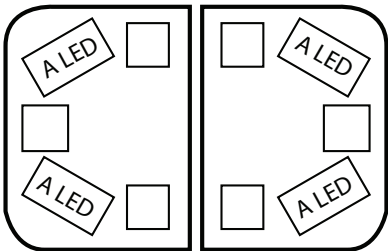


ITTS
(2) 6-LED Take-Downs



ITA
(2) Alley Lights

Pre-Configured Lightbar



IT9AAAAP

Mini Legacy® Series

5YR 12 SC SCAN LOCK HARD COAT R65 CLASS 1 SAE CLASS 1 PROCLERA ISOLO

Features available across product family. May not apply to every model.

Download WeCad™ for models and options



FEATURES

- Linear Super-LED® technology
- Advanced Thermal Design improves LED performance during extended operation
- Aluminum top repels hail and protects against other environmental damages
- Extruded aluminum platform
- Center dividers with liquid injection molded seals protect internal components from water intrusion
- One piece uni-dome construction with a single sealing point assures lightbar integrity in all weather conditions
- Proclera® Silicone Optics (available in take-down lights)
- Available with Clear or Smoked lens
- Permanent mount features a low-profile mounting kit
- Magnetic mount includes 90 lb pull magnets
- Magnetic and magnetic/suction mounts include 10' cord, cigar plug with On/Off switch and Scan-Lock™ flash pattern switch

Model	Mount	LED Color	VDC	Patterns	Compliance	Dimensions
GT9***P	Permanent	Amber or White	12	67 Scan-Lock™ and SignalAlert™ 75 Default For Magnetic Mount	SAE Class 1 and R65 Class 1	19.38" (490mm) L x 1.6" (41mm) H x 11.31" (287mm) W
GT9***M	Magnetic					
GT9***V	Magnetic/Suction					



* Replace symbol in model number with letter indicating desired color: A = Amber, C = White
The use of a magnetic or suction mounted product on the roof of a vehicle in motion is not recommended, and is at the sole discretion and risk of the user.
Consult current price list for full list of available options at whelen.com/literature.

OPTIONS



GTA
(2) Alley Lights



GTTS
(2) Short 3-LED Take-Downs

Municipal Systems



Features available across product family. May not apply to every model.

Whelen's Municipal Systems are engineered to meet the demands of the heavy-duty truck market in all operating conditions. For our full line of Municipal Systems, visit www.whelen.com.



Remote L31 Beacon

Stainless Steel Micro 400



Rear 700 Series Lightheads

Rear 400 Series Lightheads

FEATURES

- Front system components provide 360° warning visibility and include a 60' TPE cable
- Rear lightheads have specially designed lenses for wide light output and include Deutsch® waterproof connectors

System 702 - 3 Light System

One L31 remote beacon with rear 700 Series lightheads

Model	Description	Compliance
SYS702A	Warning	SAE Class 1
SYS702B	Warning and Brake/Tail/Turn	
SYS702D	Warning, Brake/Tail/Turn, and Back-Up	



System 710 - 4 Light System

Two stainless steel Micro 400 lightheads with rear 700 Series lightheads

Model	Description	Compliance
SYS710A	Warning	SAE Class 1
SYS710B	Warning and Brake/Tail/Turn	
SYS710D	Warning, Brake/Tail/Turn, and Back-Up	



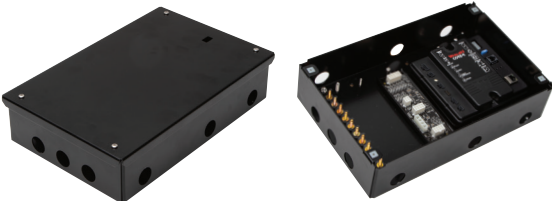
CORE-R™ DOT SYSTEM



Features available across product family. May not apply to every model.

Core-R DOT is a vehicle control system engineered to enhance first responder and motorist safety with complete configurability, advanced automation, and remote connectivity. All the benefits and features of Core-R are housed in a durable junction box to protect control system components and wiring from harsh environments and weather typically experienced by DOT vehicles. Its modular design makes installation on a municipal vehicle quick and easy with parts designed to be installed in various locations throughout a vehicle.

- Powered by WeCanX®
- Supports any combination of up to 99 WeCanX devices
- Seamlessly integrates with Whelen Command® software
- Remote firmware updates through USB-C with Whelen Command or over-the-air with Whelen Cloud Platform®
- Optional modules are available to further enhance flexibility and safety like DVI™ and V2V Sync





Shown in White



Shown in black with OE Brake Light

FEATURES

- Mounts a variety of emergency lighting without any vehicle damage, including Whelen beacons and the following mini lightbars: Responder® LP/HD, Mini Century™, Mini Liberty™ II, and Mini Legacy®
- Vehicle-specific vacuum-formed install kits provide a perfect fit
- Available with a durable steel or powder-coated aluminum construction in Black or White
- Bolt-on installation system with fixed brackets requires no cutting or drilling, providing peace of mind when used on both leased trucks and aluminum roof structures
- Quickly and easily mounts using the screw holes of the vehicle's third brake light
- Third brake light remounts to the QuickFit platform
- Wiring is simple to install through the existing third brake light opening, without removing the headliner
- QuickFit is designed to keep a level mounting surface for the life of the install
- Includes mounting bracket
- Usable mounting area is approximately 7.25" (184.15mm) W x 17.25" (433mm) L

Model	Description
QFFORD1	Ford F-150 2015-2023, F-150 Lightning 2022-2023, F-250/F-350 Super Duty, 2017-2023, Black Aluminum Housing*
QFFORD1W	Ford F-150 2015-2023, F-150 Lightning 2022-2023, F-250/F-350 Super Duty, 2017-2023, White Aluminum Housing*
QFFORD1S	Ford F-150 2015-2023, F-150 Lightning 2022-2023, F-250/F-350 Super Duty, 2017-2023, Black Steel Housing (Will Work with Magnetic Mount Lights)
QFFRD1SW	Ford F-150 2015-2023, F-150 Lightning 2022-2023, F-250/F-350 Super Duty, 2017-2023, White Steel Housing (Will Work with Magnetic Mount Lights)
QFRAM2	Ram 1500 Classic, 2019-2021, Black Powder-Coated Aluminum Housing*
QFRAM2W	Ram 1500 Classic, 2019-2021, White Powder-Coated Aluminum Housing*
QFRAM2S	Ram 1500 Classic, 2019-2021, Black Powder-Coated Steel Housing (Will Work with Magnetic Mount Lights)
QFRAM2SW	Ram 1500 Classic, 2019-2021, White Powder-Coated Steel Housing (Will Work with Magnetic Mount Lights)
QFGM2	Chevy Silverado 1500/2500/3500 with Spoiler, 2019-2023, Black Powder-Coated Aluminum Housing*
QFGM2W	Chevy Silverado 1500/2500/3500 with Spoiler, 2019-2023, White Powder-Coated Aluminum Housing*
QFGM2S	Chevy Silverado 1500/2500/3500 with Spoiler, 2019-2023, Black Powder-Coated Steel Housing (Will Work with Magnetic Mount Lights)
QFGM2SW	Chevy Silverado 1500/2500/3500 with Spoiler, 2019-2023, White Powder-Coated Steel Housing (Will Work with Magnetic Mount Lights)

*Note: Aluminum housings are not for use with magnetic mount lights



WARNING: This product may contain chemicals known to the State of California to cause cancer and birth defects or other reproductive harm. For more information, visit whelen.com/regulatory.

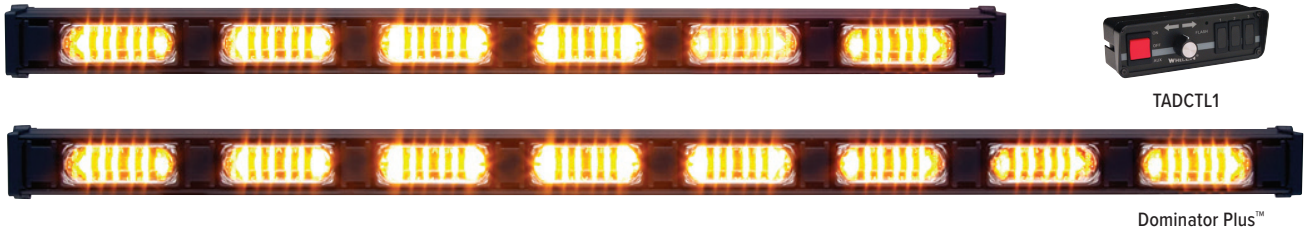
WHELEN
MANUFACTURED IN AMERICA

TRAFFIC ADVISOR

Traffic Advisor™ Dominator™ Series



Features available across product family. May not apply to every model.



FEATURES

- Interior or exterior applications
- Extruded aluminum housing
- Left arrow, right arrow, split arrow, and warning function
- Fully encapsulated
- 15' cable standard, alternate cable lengths available, contact factory

Model	Series	Lamps	Lightheads	Control Head	VDC	Compliance	Dimensions	Length				
DTA6A	Dominator	6	TIR3™ Amber	Optional TADCTL1 Control Head	12	SAE Class 1	1.75" (44mm) H x 2.19" (56mm) W	23.26" (59cm)				
DTA6			Requires 6 D*									
DTA8A		8	TIR3 Amber					30.36" (77cm)				
DTA8			Requires 8 D*									
DTAW8			Requires 8 D*, 6 Amber, 2 End Warning									
DPTA6A	Dominator Plus	6	LINZ6 Amber					23.26" (59cm)				
DPTA6			Requires 6 DP*									
DPTA8A		8	LINZ6™ Amber					30.36" (77cm)				
DPTA8			Requires 8 DP*									
DPTAW8			Requires 8 DP*, 6 Amber, 2 End Warning									
D*	TIR3 Super-LED® Lighthead, Amber or White											
DP*	LINZ6 Super-LED Lighthead, Amber or White											



* Replace symbol in model number with letter indicating desired color: A = Amber, C = White
Consult current price list for full list of available options at whelen.com/literature.



Traffic Advisor™ Rear Slot Mount

5YR 12V HARD COAT SAE CLASS 1 ISOLO™

Features available across product family. May not apply to every model.



TAM63



TACTL5



TAZ86

FEATURES

- Interior or exterior applications
- Extruded aluminum housing
- Left arrow, right arrow, split arrow, and warning function
- Fully encapsulated
- 15' cable standard, alternate cable lengths available, contact factory

Model	Lamps	Lightheads	Control Head	VDC	Compliance	Dimensions	Length
TAM63	6	TIR3™	Includes TACTL5 Control Head	12	SAE Class 1	1.75" (44mm) H x 2.19" (56mm) W	23.26" (59cm)
TAM83	8						30.36" (77cm)
TAM83**							
TAZ66	6	LINZ6™					23.26" (59cm)
TAZ86	8						30.36" (77cm)
TAZ86**							



* Replace symbol in model number with letter indicating desired color: A = Amber, W = White
Consult current price list for full list of available options at whelen.com/literature.

Traffic Advisor™ Flat Mount

5YR 12V HARD COAT SAE CLASS 1 ISOLO™

Features available across product family. May not apply to every model.



FEATURES

- Interior or exterior applications
- Extruded aluminum housing
- Left arrow, right arrow, split arrow, and warning function
- Fully encapsulated

Model	Lamps	Lightheads	Cable	Control Head	VDC	Compliance	Dimensions	Length
TAL65	6	500 Series 5mm LED	15'				2.88" (73mm) H x 2.25" (57mm) W	36" (91cm)
TAL85	8							46.88" (119cm)
TA4437M	8	TIR6™ 500 Series Super-LED® Two Piece	30'	Includes TACTL5 Control Head	12	SAE Class 1	2.46" (62mm) H x 4.41 (112mm) W	21.88" (56cm)
TA4437M1			50'					
TA4437M2								
TAM65	6	TIR6™ 500 Series	15'				1.75" (44mm) H x 2.19" (56mm) W	23" (58cm)
TAM85	8							30.06" (76cm)
TAM85**								



* Replace symbol in model number with letter indicating desired color: A = Amber, C = White
** Indicates flashing end modules
Consult current price list for full list of available options at whelen.com/literature.

Traffic Advisor™ Front Load

5YR 12 HARD COAT SAE CLASS 1 TITLE 13 ISOLO™

Features available across product family. May not apply to every model.
*Please contact Whelen for specific photometric information regarding CA Title 13 lighthouse and configurable lightbar product conformance.



TACF85



TANF65



TACTL5

FEATURES

- Interior or exterior applications
- Extruded aluminum housing
- Left arrow, right arrow, split arrow, and warning function
- Fully encapsulated
- 15' cable standard, alternate cable lengths available, contact factory

Model	Lamps	Lightheads	Control Head	VDC	Compliance	Dimensions	Length
TANF65	6	500 Series Linear-LED®	Includes TACTL5 Control Head	12	SAE Class 1	2.38" (60mm) H x 2.38" (60mm) W	34" (86cm)
TANF85	8						45.13" (115cm)
TANF85**							
TACF85							
TACF85**	8	500 Series CON3™ Super-LED®	No Control Head Required	12	SAE Class 1 and CA T13	2.38" (60mm) H x 2.38" (60mm) W	34" (86cm)
TADF6	6	500 Series DUO™ Super-LED					45.13" (115cm)
TADF8	8						



* Replace symbol in model number with letter indicating desired color: A = Amber, C = White
Consult current price list for full list of available options at whelen.com/literature.

Traffic Advisor™ TAC8 (Economy)

5YR 12 IP67 HARD COAT SAE CLASS 1 ISOLO™

Features available across product family. May not apply to every model.



FEATURES

- TAC8 compact control head easily mounted 3 different ways: VHB Tape, Velcro®, or Permanent mount hardware
- Extruded aluminum housing
- Left arrow, right arrow, split arrow, and warning function
- Rear dip switch provides 8 flash pattern choices
- 15' cable standard, alternate cable lengths available, contact factory

Model	Lamps	Lightheads	Description	VDC	Compliance	Dimensions	Length
TAC815	8	SOLO™ Super-LED®	15' Cable, and Included Control Head	12	SAE Class 1	2" (50mm) H x 2.64" (70mm) W	47.75" (121cm)
TAC830			30' Cable, and Included Control Head				
TAC850			50' Cable, and Included Control Head				



Traffic Advisor™ 2200 Series

2YR
10YR
10-30
IP67
HARD COAT
LC
SAE CLASS 1
TITLE 13*

Features available across product family. May not apply to every model.



TACTL5



FEATURES

- Utilizes powerful ION™ T-Series™ lightheads with patented E Block™ technology
- IP67 Rated
- Compatible with TACTL5 control head and CTA module
- Hard-coated lenses resist environmental damage from sand, sun, salt, and road chemicals
- Low current switching
- Slide bolt mount
- Includes 2 flat end caps

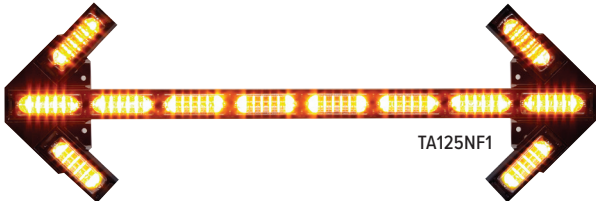
Model	Lamps	Lightheads	Control Head	VDC	Compliance	Dimensions	Length
TA2230F	6	Super-LED®	Includes TACTL5 Control Head	10-30	SAE Class 1 and CA T13	1.66" (42mm) H x 2.28" (58mm) W	32" (82cm) w/ Flat End Caps
TA2240F	8					1.66" (42mm) H x 2.28" (58mm) W	42" (107cm) w/ Flat End Caps

Consult current price list for full list of available options at whelen.com/literature.

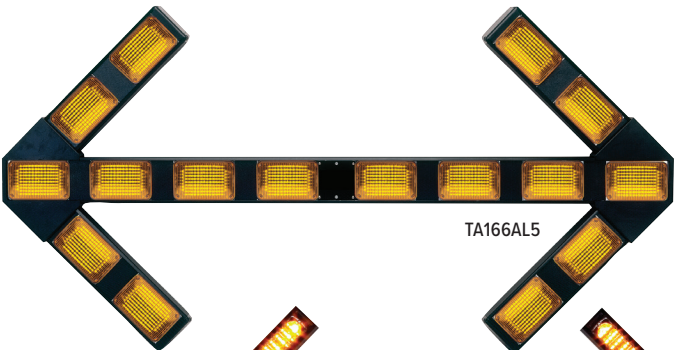
Traffic Advisor™ Arrows

5YR
12
HARD COAT
SAE CLASS 1
TITLE 13*
ISOLO™

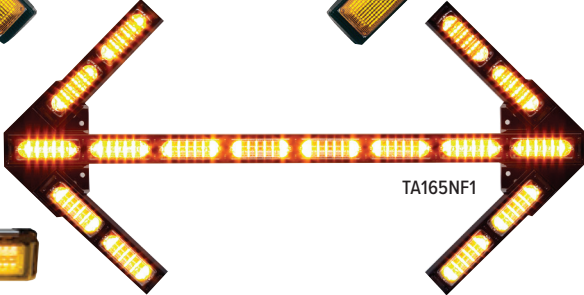
Features available across product family. May not apply to every model.
 *Please contact Whelen for specific photometric information regarding CA Title 13 lighthead and configurable lightbar product conformance.



TA125NF1



TA166AL5



TA165NF1



TA45B72

FEATURES

- Extruded aluminum housing
- Left arrow, right arrow, split arrow, and warning functions
- Fully encapsulated
- 15' cable standard, alternate cable lengths available, contact factory

Model	Lamps	Lightheads	Control Head	Cable	VDC	Compliance	Dimensions	Length		
TA125NF1	12	500 Series Linear Super-LED®	Includes TACTL6 Control Head	25'	12	SAE Class 1	15" (381mm) H x 3.5" (89mm) W	46" (117cm)		
TA125NF2				50'						
TA165NF1	16			600 Series			25'	SAE Class 1 and CA T13	4.35" (111mm) H x 4.17" (106mm) W	72" (183cm)
TA165NF2							50'			
TA166AL5				51'			36.5" (927mm) H x 4" (102mm) W	5.5" (14cm)		
TA45B72	8	700 Series	Includes TACTL5 Control Head	15'						

Consult current price list for full list of available options at whelen.com/literature.

LIGHT ARRAYS

Download WeCad™ for models and options



WeCanX® 2250

5YR 10YR ≥ 12 ≥ 24 IP67 HARD COAT SAE CLASS 1 WE CAN X DUO™

Features available across product family. May not apply to every model.



WX2280

FEATURES

- Utilizes powerful ION™ T-Series™ lightheads with patented E Block™ technology
- IP67 rated
- 3" slimmer than 4500 series
- Powered by WeCanX technology
- Functionality configurable in Whelen Command®
- Lighthead configurations easily defined within Whelen's WeCad™ Software
- DUO™ support in warning light options
- Aerial recognition option
- Includes 2 angled end caps
- Slide bolt mount

Model	Modules	VDC	Compliance	Dimensions	Length
WX2230	6	12/24	SAE Class 1	1.66" (42mm) H x 2.28" (58mm) W	30" (76cm)
WX2240	8				40" (102cm)
WX2250	10				50" (127cm)
WX2260	12				60" (153cm)
WX2270	14				70" (178cm)
WX2280	16				80" (203cm)



22ARLA



Consult current price list for full list of available options at whelen.com/literature.



TCRWX6 pictured here. Please refer to the table on page 35 for more information.



TCRWX5

FEATURES

- Dynamic Variable Intensity (DVI™) light patterns
- Vehicle-to-Vehicle Synchronization
- Available in SOLO™ (single-color) or DUO™ (two-color interleaved) modules
- Whelen Command® programming allows:
- DUO modules to operate with a steady override, such as White steady-burn
- Full configurability of Traffic Advisor™ functionality

- Adjustable intensity levels of cruise light control
- Mounts easily via slide bolt with vehicle specific brackets, universal “L” brackets, or under lightbar brackets
- Works with existing Tracer mounting hardware
- Hard-coated lenses resist environmental damage from sand, sun, salt, and road chemicals

OPTION



CCP Core® Control Point for use with One or Two Tracer WeCanX® models when NOT using CenCom Core®

Model	SOLO™ Lighthead	VDC	Compliance	Dimensions	Length
TCRWX1	1 Lamp Housing and TCRWXP* SOLO™ Lighthead. “L” Bracket Mounting (2 Required) Purchased Separately	12	SAE Class 1 Certified	0.93” (24mm) H x 2.04” (52mm) D	13.8” (35cm)
TCRWX2	2 Lamp Housing and TCRWXP*/TCRWXS* SOLO™ Lighthead. “L” Bracket Mounting (3 Required) Purchased Separately				26.16” (66.5cm)
TCRWX3	3 Lamp Housing and TCRWXP*/TCRWXS* SOLO™ Lighthead. “L” Bracket Mounting (4 Required) Purchased Separately				38.53” (98cm)
TCRWX4	4 Lamp Housing and TCRWXP*/TCRWXS* SOLO™ Lighthead. “L” Bracket Mounting (5 Required) Purchased Separately				50.9” (129.5cm)
TCRWX5	5 Lamp Housing and TCRWXP*/TCRWXS* SOLO™ Lighthead. “L” Bracket Mounting (6 Required) or Vehicle-Specific Mounting Purchased Separately				63.26” (161cm)
TCRWX6	6 Lamp Housing and TCRWXP*/TCRWXS* SOLO™ Lighthead. “L” Bracket Mounting (7 Required) or Vehicle-Specific Mounting Purchased Separately				75.62” (192cm)
TCRWXP*	Primary SOLO™ Lighthead Includes Lamp Driver, One Required in Position 1, for each SOLO™ Tracer™, Blue, Amber, or White. No Charge When Ordered with the Appropriate Housing			-	-
TCRWXS*	Secondary SOLO™ Lighthead, Blue, Amber, or White. For use in Positions 2-6. No Charge When Ordered with the Appropriate Housing				-
TCRWX1	1 Lamp Housing and TCRWXP# DUO™ Lighthead. “L” Bracket Mounting (2 Required) Purchased Separately	12	SAE Class 1 Certified	0.93” (24mm) H x 2.04” (52mm) D	13.8” (35cm)
TCRWX2	2 Lamp Housing and TCRWXP# DUO™ Lighthead. “L” Bracket Mounting (3 Required) Purchased Separately				26.16” (66.5cm)
TCRWX3	3 Lamp Housing and TCRWXP# DUO™ Lighthead. “L” Bracket Mounting (4 Required) Purchased Separately				38.53” (98cm)
TCRWX4	4 Lamp Housing and TCRWXP# DUO™ Lighthead. “L” Bracket Mounting (5 Required) Purchased Separately				50.9” (129.5cm)
TCRWX5	5 Lamp Housing and TCRWXP# DUO™ Lighthead. “L” Bracket Mounting (6 Required) or Vehicle-Specific Mounting Purchased Separately				63.26” (161cm)
TCRWX6	6 Lamp Housing and TCRWXP# DUO™ Lighthead. “L” Bracket Mounting (7 Required) or Vehicle-Specific Mounting Purchased Separately				75.62” (192cm)
TCRWXP#	Primary DUO™ Lighthead Includes Lamp Driver, One Required in Position 1, for each DUO™ Tracer™, Amber, Blue, Red, or White. No Charge When Ordered with the Appropriate Housing			-	-
TCRWXS#	Secondary DUO™ Lighthead, Amber, Blue, Red, or White. For use in Positions 2-6. No Charge When Ordered with the Appropriate Housing				-



* Replace symbol in model number with letter indicating desired color: A = Amber, B = Blue, C = White

Replace symbol in model number with letter indicating color combo desired: F = Amber/White, K = Amber/Red, M = Blue/Amber
Consult current price list for full list of available options at whelen.com/literature.

DASH & DECK

Avenger® II Series

5YR 12 HARD COAT SAE CLASS 1 SOLO DUO TRIO

Features available across product family. May not apply to every model.



FEATURES

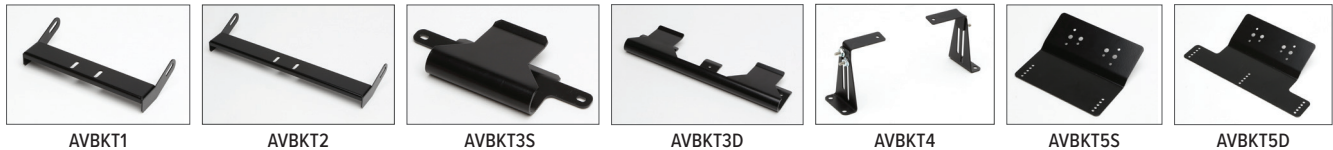
- Combination Linear/TIR™ optics provide high-intensity warning and illumination, with a smaller profile to maximize space for optimal versatility
- Black polycarbonate housing
- Mounts via swivel/bail bracket with 3 suction cups
- Cigar plug series models include 10' cord with On/Off switch and Scan-Lock™ flash pattern switch
- Hard-wired series models include a 2-wire (SOLO™), 3-wire (DUO™), or 4-wire (TRIO™) pigtail

Model	Series	Lamp	LED Colors	Override	VDC	Patterns	Compliance	Dimensions (Includes Housing)
AVC11*	SOLO	Single	Amber or White	-	12	26	SAE Class 1	6.5" (165mm) W, Single
AVC21**		Dual	Amber or White			55		10.25" (260mm) W, Dual x
AVC12#	DUO	Single	Amber/White or Blue/Amber			26		1.75" (44mm) H x
AVC22FF		Dual	Two Amber/White			55		4.5" (144mm) D
AVC22MM			Two Blue/Amber					
AVC13BAC	TRIO	Single	Blue/Amber/White	White		26		Height With Adjustable Mounting Bracket:
AVC23BAC		Dual	Blue/Amber/White	White		55		1.6" (41mm) to 1.9" (74mm)



* Replace symbol in model number with letter indicating desired color: A = Amber, C = White
Replace symbol in model number with letter indicating color combo desired: F = Amber/White, M = Blue/Amber
Consult current price list for full list of available options at whelen.com/literature.

OPTIONS



SpitFire ION™

5YR
10YR
12
SCAN LOCK
HARD COAT
SAE CLASS 1
TITLE 13
ISOLO

Features available across product family. May not apply to every model.
 *Please contact Whelen for specific photometric information regarding CA Title 13 lighthead and configurable lightbar product conformance.



FEATURES

- ION Super-LED® interior dash and deck light
- Fully encapsulated for moisture, vibration and corrosion resistance
- Includes universal bracket, windshield suction cup mount
- Supplied with integral hood and 10’ cord and cigar plug with built-in On/Off switch with LED “On” indicator and pattern control selection switch

Model	Amps	VDC	Patterns	Compliance	Dimensions
SFION*	1.0/Peak, 0.4/Avg	12	25 Scan-Lock™	SAE Class 1 and CA T13	5.13" (130mm) W x 1.63" (41mm) H x 3.38" (86mm) D

* Replace symbol in model number with letter indicating desired color: A = Amber, C = White

FlatLighter™

5YR
12
SCAN LOCK
HARD COAT
SAE CLASS 1

Features available across product family. May not apply to every model.

FEATURES

- Visor mount
- Includes Velcro® mounting straps
- 8’ straight cord with cigar plug included



Model	Amps	VDC	Patterns	Compliance	Dimensions
FLLED**	0.9/Peak, 0.38/Avg	12	21 Scan-Lock	SAE Class 1	13" (330mm) W x 4.5" (114mm) H x 1.25" (32mm) D

* Replace symbol in model number with letter indicating desired color: A = Amber, C = White



⚠ WARNING: This product may contain chemicals known to the State of California to cause cancer and birth defects or other reproductive harm. For more information, visit whelen.com/regulatory.

WHELEN
 MANUFACTURED IN AMERICA

SlimLighter®



Features available across product family. May not apply to every model.

FEATURES

- TIR6™ Super-LED® interior light
- Swivel bracket for permanent or suction cup mounting included
- Supplied with 10' cord and cigar plug with built-in On/Off switch with LED “On” indicator and pattern control selection switch



Model	Amps	VDC	Patterns	Compliance	Dimensions
SLPMM**	1.5/Peak, 0.6/Avg	12	21 Scan-Lock™	SAE Class 1	16.38" (416mm) W x 1.65" (42mm) H x 1.79" (45mm) D



* Replace symbol in model number with letter indicating desired color: A = Amber, C = White

Slim-Miser™



Features available across product family. May not apply to every model.

FEATURES

- LED interior light
- Supplied with 10' cord and cigar plug with built-in On/Off switch with LED “On” indicator and pattern control selection switch
- Swivel mount with 3 suction cups securely holds dash light to windshield, minimizing flashback



Model	Amps	VDC	Patterns	Compliance	Dimensions
SMLLAA	0.33/Peak, 0.1/Avg	12	17 Scan-Lock	SAE Class 1	12.85" (326mm) W x 1.63" (42mm) H x 2.75" (70mm) D



Dominator™ & Dominator Plus™ Series



Features available across product family. May not apply to every model.

*Please contact Whelen for specific photometric information regarding CA Title 13 lighthouse and configurable lightbar product conformance.



FEATURES

- Low-profile surface mount housing designed for interior or exterior use
- Choice of TIR3™ or LINZ6™ Super-LED® modules
- Fully encapsulated for moisture, vibration, and corrosion resistance
- Internal self-contained electronics
- Slide bolt mount
- Extruded aluminum Black powder-coated housing
- 8-lamp modules available with end flashers

Model	Description	Amps	VDC	Patterns	Compliance	Dimensions	Length	
D2	2-Lamp, Requires Two D*	0.4/Peak, 0.16/Avg Per Lamp	12	7 Scan-Lock™	SAE Class 1	1.19" (35mm) H x 2.19" (55mm) W	7" (178mm)	
D4	4-Lamp, Requires Four D*			10 Scan-Lock			14" (356mm)	
D6	6-Lamp, Requires Six D*						21" (533mm)	
D8	8-Lamp, Requires Eight D*						28" (711mm)	
D*	TIR3 Super-LED Lighthouse, Amber or White	-		-	-	-		
DP2	2-Lamp, Requires Two DP*	0.44/Peak, 0.2/Avg Per Module		7 Scan-Lock	SAE Class 1 and CA T13	1.19" (35mm) H x 2.19" (55mm) W	7" (178mm)	
DP4	4-Lamp, Requires Four DP*						14" (356mm)	
DP6	6-Lamp, Requires Six DP*						23" (584mm)	
DP8	8-Lamp, Requires Eight DP*						30" (762mm)	
DPTA6A	6-Lamp, Amber LINZ6 Traffic Advisor™	0.75/Peak, 0.3/Avg Per Module					Pairs May Be Synchronized To Each Other	23" (584mm)
DPTA6	6-Lamp, LINZ6 Traffic Advisor, Requires Six DP*							23" (584mm)
DPTA8A	8-Lamp, Amber LINZ6 Traffic Advisor							30" (762mm)
DPTA8	8-Lamp, LINZ6, 6-Lamp Traffic Advisor and Two End Warning Lights							30" (762mm)
DPTAW8	8-Lamp, LINZ6 Traffic Advisor							30" (762mm)
DP*	LINZ6 Super-LED Lighthouse, Amber or White	-		-		-	-	



* Replace symbol in model number with letter indicating desired color: A = Amber, C = White

LIGHTHEADS

ION™ Series

10YR 12 SYNC SCAN LOCK READY IP67 HARD COAT R65 CLASS 1 SAE CLASS 1 SOLO™ DUO™ TRIO™

Features available across product family. May not apply to every model.



IONA



IONSMA



ION profile

FEATURES

- SOLO™ models available in single-or split-colors
- DUO™ and TRIO™ models feature Linear-LED® optics
- Surface or universal mount

Model	Technology	LED Color	Amps	VDC	Patterns	Compliance	Dimensions
ION*	Directional Linear Super-LED®	Amber or White	1.0/ Peak, 0.4/ Avg	12	33 Scan-Lock™	SAE Class 1 & R65 Class 1	Universal Mount: 4" (101mm) W x 1" (25mm) H x 1.25" (32mm) D
ION#	Directional Linear Split-Color Super-LED	Amber/Blue or Amber/White					
WION*	Wide-Angle Linear Super-LED	Amber or White					
WION#		Amber/Blue or Amber/White					
IONSM*	Directional Linear Super-LED	Amber or White					
IONSMC*		Amber/Blue or Amber/White					
IONSM#		Amber/Blue					
IONSMC#		Amber/Blue					
WIONSM*	Wide-Angle Linear Super-LED	Amber or White					Surface Mount: 5.91" (150mm) W x 1.69" (43mm) H x 1.13" (28mm) D
WIONSMC*		Amber/Blue or Amber/White					
WIONSM#		Amber/Blue or Amber/White					
WIONSMCD		Amber/Blue or Amber/White					
I2#	Linear DUO Super-LED	Amber/White or Amber/Blue			69 Scan-Lock		
I2SM#		Amber/White or Amber/Blue			69 Scan-Lock		
I3MC	Linear TRIO Super-LED	Blue/Amber/White			33 Scan-Lock		
I3SMC		Blue/Amber/White			33 Scan-Lock		



* Replace symbol in model number with letter indicating desired color: A = Amber, B = Blue, C = White
Replace symbol in model number with letter indicating color combo desired: F = Amber/White, M = Blue/Amber
Consult current price list for full list of available options at whelen.com/literature.

OPTIONS



IONK1B
Swivel Mount Bracket



IONBKT1
License Plate Bracket



IONBKT2



IONBKT5
Universal Mount,
Reversed



IONBKT6



IONBKT7



IONGROM
Grommet Mount Bracket



IONBKT1
Application Example

ION™ V-Series™



Features available across product family. May not apply to every model.



IONSV1A



IONSV1C



Above: ION V-Series profile
Below: IONSV profile (for comparison)



FEATURES

- Available in 3-in-1 combination warning, spotlight, and ground illumination light or in single-color warning-only models
- Single-color models have combination 180° and TIR™ directional warning
- Black, White, or Chrome housing

Model	Technology	Mount	Housing	LED Color	Amps	VDC	Patterns	Compliance	Dimensions
IONV3*	Linear Super-LED®	Universal	Black	Amber or White with White Illumination	Warning 0.77 Alley 0.31 Ground Illumination 0.12	12	33 Scan-Lock™	SAE Class 1 R65 Class 1	Surface Mount: 5.94" (150mm) W x 1.69" (43mm) H x 2" (50mm) D Universal Mount: 4.06" (104mm) W x 1" (25mm) H x 2.19" (56mm) D
IONSV3*		Surface	Black						
IONSV3*W			White						
IONSV3*C			Chrome						
IONV1*	Linear and TIR Super-LED with Directional Light	Universal	Black	Amber or White			25 Scan-Lock		
IONSV1*		Surface	Black						
IONSV1*C			Chrome						



* Replace symbol in model number with letter indicating desired color: A = Amber, C = White
Consult current price list for full list of available options at whelen.com/literature.

OPTIONS



IONK1B
Swivel Mount Bracket



IONGROM
Grommet Mount Bracket



IONBKT1
License Plate Bracket



IONBKT5
Universal Mount, Reversed

T-Series™

10YR 12 SYNC IP67 HARD COAT R65 CLASS 1 SAE CLASS 1 SOLO DUO TRIO

Features available across product family. May not apply to every model.



TLI2M

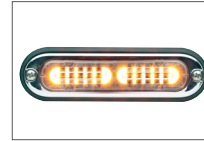


TLI2F

FEATURES

- Linear Super-LED® technology
- SOLO™ models available in single-or split-colors
- Surface mount via 2 screws for easy installation
- Black flange included

OPTIONS



TIONFC Chrome Flange



IONBKT1 "L" Mounting Bracket



IONBKT2 License Plate Bracket



IONBKT4 Over/Under "L" Mounting Bracket for Two Lightheads

Model	Technology	LED Color	Amps	VDC	Patterns	Compliance	Dimensions
TLI*	SOLO	Amber or White	0.8/Peak,	12	25 Scan-Lock™	SAE Class 1 R65 Class 1	5.14" (130mm) W x 1.49" (38mm) H x 0.52" (13mm) D
TLI#	SOLO (Split-Color)	Amber/White, Amber/Blue or Amber/Green	0.32/Avg		69 Scan-Lock		
TLI2#	DUO™		0.72/Peak, 0.28/Avg		33 Scan-Lock	SAE Class 1	
TLI3KC	TRIO™	Red/Amber/White					
TLI3MC		Blue/Amber/White					



* Replace symbol in model number with letter indicating desired color: A = Amber, C = White

Replace symbol in model number with letter indicating color combo desired: F = Amber/White, M = Blue/Amber, P = Amber/Green

Consult current price list for full list of available options at whelen.com/literature.

Mini T-Series™

10YR 12 SYNC IP67 HARD COAT R65 CLASS 1 SAE CLASS 1 SOLO DUO TRIO

Features available across product family. May not apply to every model.



TLMIA



TLM2F



Mini T-Series profile

FEATURES

- Linear Super-LED® technology
- Surface mount via 2 screws for easy installation
- Black flange included

Model	Technology	LED Color	Amps	VDC	Patterns	Compliance	Dimensions
TLM1*	SOLO	Amber or White	0.4/Peak, 0.16/Avg	12	25 Scan-Lock™	SAE Class 1 R65 Class 1	3.34" (85mm) W x 1.50" (38mm) H x .54" (14mm) D
TLM2#	DUO	Amber/White or Amber/Blue	0.2/Peak, 0.08/Avg		69 Scan-Lock		
TLM3#*	TRIO	Red/Amber/White, Red/Amber/Green, Blue/Amber/White, Blue/Amber/Green or Green/Amber/White	0.38/Peak 0.14/Avg		32 Scan-Lock		



* Replace symbol in model number with letter indicating desired color: A = Amber, C = White

Replace symbol in model number with letter indicating color combo desired: F = Amber/White, M = Blue/Amber

** Replace symbol in model number with letter indicating colors desired: MC = Blue/Amber/White, KC = Red/Amber/White,

KG = Red/Amber/Green, PC = Green/Amber/White, MG = Blue/Amber/Green

Consult current price list for full list of available options at whelen.com/literature.

OPTIONS



TIONMLB
Surface Mount
Flange/Hole Adapter,
Black. Also Available In
Chrome



TIONMGRM
Grommet Mount Kit





TLIA x 4 (per side) and TLMIA, pictured here.
Please refer to page 42 for more information.



CORE FAMILY FOUND ON PAGE 82



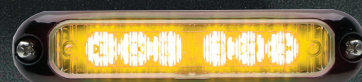
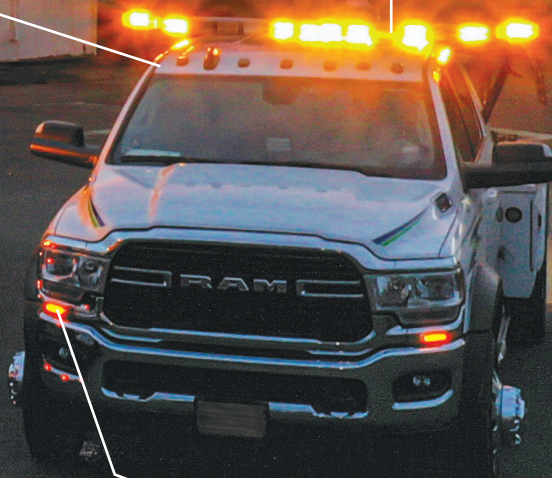
M62T FOUND ON PAGE 61




STRIP-LITE® PLUS ON PAGE 50



FREEDOM IV SERIES FOUND ON PAGE 10



MICRON SERIES
FOUND ON PAGE 47

 WARNING: This product may contain chemicals known to the State of California to cause cancer and birth defects or other reproductive harm. For more information, visit whelen.com/regulatory.

WHELEN
MANUFACTURED IN AMERICA

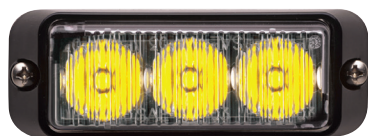
45

EST. 1952

TIR3™, LIN3™, LINZ6™, & LINV2™ Series



Features available across product family. May not apply to every model.



TIR3



LIN3



LINZ6



LINV2

FEATURES

- Black polycarbonate flange included
- Fully encapsulated for moisture, vibration and corrosion resistance
- LINZ6™ sealed with LIM (liquid injection molded) seal
- 6" pigtail cable included

Model	Optics	Technology	Mount	LED Color	Amps	VDC	Patterns	Compliance	Dimensions
RS*03ZCR	Directional	TIR3 Super-LED®	Horizontal Surface	Amber or White	0.4/Peak, 0.16/Avg	12	25 Scan-Lock™	R65 Class 1	3.6" (91mm) W x 1.3" (33mm) H x 1.32" (34mm) D
RV*03ZCR			Vertical Surface						
RS*02ZCR		LIN3 Super-LED	Horizontal Surface		0.75/Peak, 0.3/Avg				4" (102mm) W x 2" (48mm) H x 1.32" (34mm) D
LINZ6*	LINZ6 Super-LED	Amber/White							
LINZ6F		Amber/Amber							
LINV2*	Combination Warning and Puddle Light	LINV2 Super-LED	Horizontal Surface	Amber or White	0.75/ Warning, 0.12/Puddle				3.88" (99mm) W x 1.58" (40mm) H x 1.65" (42mm) D
LINSV2*			Under Surface Mounting						

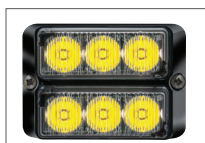


* Replace symbol in model number with letter indicating desired color: A = Amber, C = White
Consult current price list for full list of available options at whelen.com/literature.

OPTIONS



RFLANGCD
Chrome Flange



RFLANG2B
Dual Surface Mount
Flange, Black or Chrome



RGROMMET
Grommet Mount Kit



RBKT1
"L" Mounting Bracket For
One Lighthead



RBKT2 I
"L" Mounting Bracket For
Two Lighthead



Vertex™ Series



Features available across product family. May not apply to every model.



VTX609A



VTX609C

OPTIONS



VTXFB
Black Flange



VTXFC
Chrome Flange

FEATURES

- Designed to mount in composite style headlight or taillight, or surface mount to exterior surfaces with flange mount option
- Fully encapsulated lamp and in-line lamp driver for moisture and vibration resistance
- Clear outer lens, Color LEDs
- 9" pigtail cable included

Model	LED Color	Amps	VDC	Patterns	Compliance	Dimensions
VTX609*	Red, Blue, Amber or White	1.0/Peak, 0.4/Avg	12	25 Scan-Lock™	R65 Class 1	1" (26mm) H x 1.63" (41mm) Dia.
VTX9#	DUO™ Color, Amber/White, Amber/Blue or Amber/Green					



* Replace symbol in model number with letter indicating desired color: A = Amber, B = Blue, C = White, R = Red
Replace symbol in model number with letter indicating color combo desired: F = Amber/White, M = Blue/Amber, P = Amber/Green
Consult current price list for full list of available options at whelen.com/literature.

Micron™ Series



Features available across product family. May not apply to every model.



MCRNSA



MCRNSM

FEATURES

- Surface mount via 2 screws for easy installation
- Fully encapsulated for moisture, vibration, and corrosion resistance
- 4" compact lighthead designed for use in virtually any lighting application
- Directional light pattern
- 6" pigtail cable included

Model	Optics	Technology	Mount	Housing	LED Color	Amps	VDC	Patterns	Compliance	Dimensions
MCRNS*	Single-Color	Super-LED®	Surface	Black	Amber or White	0.6/Peak, 0.24/Avg	12	25 Scan-Lock™	SAE Class 1 R65 Class 1	4" (102mm) W x 0.88" (23mm) H x 0.88" (23mm) D
MCRNSC*				Chrome	Amber/White or Amber/Blue					
MSRNS#	Split-Color			Black	Amber/White or Amber/Blue					
MSRNSC#				Chrome	Amber/White or Amber/Blue					
MCRNT*	Single-Color		Stud	Silver	Amber or White					
MCRNT#	Split-Color				Amber/White or Amber/Blue					



* Replace symbol in model number with letter indicating desired color: A = Amber, C = White
Replace symbol in model number with letter indicating color combo desired: F = Amber/White, M = Blue/Amber
Consult current price list for full list of available options at whelen.com/literature.

OPTIONS



MCRNB1
"L" Angle Mounting
Bracket



MCRNB2
License Plate Bracket

OS™ Series



Features available across product family.
May not apply to every model.



OSA00FCR



OSC00SCR



OAC0EDCR

FEATURES

- Fully encapsulated lamp and in-line lamp driver for moisture and vibration resistance
- Small and versatile LED lighting for virtually any area of a vehicle
- Chrome housing included
- Clear outer lens, Amber or White LEDs
- OS Series Optics
- Surface mount via 2 screws for easy installation

Model	Application	LED Color	Amps	VDC	Patterns	Dimensions
OSCOEDCR	White Illumination	White	0.3	12	Steady	1.5" (38mm) W x 1" (25mm) H x 0.5" (13mm) D
OACOEDCR						1.85" (48mm) W x 1" (25mm) H x 0.88" (21mm) D
OS*00FCR	Flasher	Amber or White	.06/Peak, .03/Avg		Single Flash	1.5" (38mm) W x 1" (25mm) H x
OS*00SCR					Steady	0.5" (13mm) D



* Replace symbol in model number with letter indicating desired color: A = Amber, C = White

3" Round Series



Features available across product family. May not apply to every model.

FEATURES

- Clear or Amber lens
- Conformal coated electronics for moisture and vibration resistance
- 6" pigtail cable included



3SA00FAR



3SC00FCR

Model	Description	LED Color	Lens Color	Amps	VDC	Dimensions
3S*00F*R	3" Round Surface Mount LED	Amber or White	Amber or Clear	.42/Peak, .21/Avg	12	0.54" (14mm) D x 3" (76mm) Dia.



* Replace symbol in model number with letter indicating desired color: A = Amber, C = White/Clear
Consult current price list for full list of available options at whelen.com/literature.

OPTIONS



3FLANGEC
Chrome Flange



3GROMMET
Grommet



4" Round Series



Features available across product family. May not apply to every model.



2FA00ZAR



2EA00ZAR



FEATURES

- Supplied with adapter for PAR-36 (4.5") applications
- Conformal coated electronics for moisture and vibration resistance
- Wide-angle Super-LED® lighthouse accommodates various applications
- 6" pigtail cable included
- Surface or grommet mount

OPTIONS



2FLANGEB
Black Flange



2FLANGEC
Chrome Flange



2GROMMET
Grommet

Model	Optics	Technology	LED Color	Lens Color	Amps	VDC	Patterns	Compliance	Dimensions
2F*00Z*R	Flat Lens	TIR6™ Super-LED®	Amber or White	Clear or Amber	0.8/Peak, 0.32/Avg	12	25 Scan-Lock™	SAE Class 1	1.19" (30mm) D x 4.25" (108mm) Dia.
2E*00Z*R	Extended Lens	LINZ6™ Super-LED			2/Peak, 0.9/Avg				2" (51mm) D x 4.25" (108mm) Dia.



* Replace symbol in model number with letter indicating desired color: A = Amber, C = White/Clear
Consult current price list for full list of available options at whelen.com/literature.

2G & 5G Series



Features available across product family. May not apply to every model.

FEATURES

- SAE Class 1 Certified
- Requires additional mounting hardware, visit whelen.com for a complete list of available options
- Hard-coated lenses resist environmental damage from sand, sun, salt, and road chemicals
- Fully encapsulated for moisture, vibration, and corrosion resistance
- 12" pigtail and vinyl grommet included



5GA00FAR



2GA00FAR

Model	Description	LED Color	Lens Color	Amps	VDC	Patterns	Dimensions
2G*00F*R	2G Series	Red or Amber	Red or Amber	0.78/Peak, 0.35/Avg	12	15 Scan-Lock™	1.25" (32mm) D (with grommet) x 5.5" (140mm) Dia.
2G*00FCR			Clear				
5G*00F*R	5G Series		Red or Amber	0.72/Peak, 0.30/Avg			7.44"(189mm) W x 3.19" (81mm) H x 1.25" (32mm) D (with grommet)
5G*00FCR			Clear				



* Replace symbol in model number with letter indicating desired color: A = Amber, R = Red, C = Clear
Consult current price list for full list of available options at whelen.com/literature.

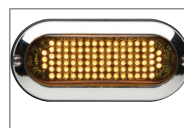
OPTIONS



5GBKT1
"L" Bracket



2GFLANGC
Chrome Flange



5GFLANGC
Chrome Flange



5GFLANGB
Black Flange



2GFLANGB
Black Flange



2GBKT1
"L" Bracket

Strip-Lite™ Plus Sequence Light



Features available across product family. May not apply to every model.



PSSEQACR Shown In Sequencing Mode

FEATURES

- Sequencing features: left, right, split, and flashing patterns
- Surface mount via 2 screws for easy installation
- Black flange included
- Chrome flange option available
- IP67 rated
- Patented E Block™ technology prevents air and moisture from entering the lighthead
- Symmetrical center-positioned wire exit
- 12” pigtail cable included

OPTION



PSFC
Chrome Flange

Model	Technology	LED Color	Lens Color	VDC	Amps	Patterns	Dimensions
PSSEQACR	Sequencing Light	Amber	Clear	12	1.93	6 Sequencing or 11 Flashing	11.11” (282mm) L x 1.68” (43mm) H x 0.53” (13mm) D



Consult current price list for full list of available options at whelen.com/literature.



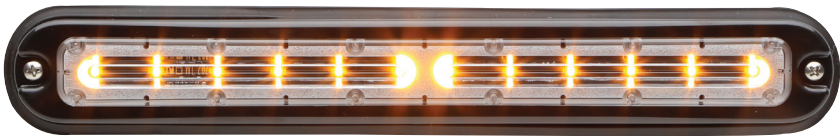
Strip-Lite™ Plus Warning Light



Features available across product family. May not apply to every model.



Low profile
surface mounting



PSA01FCR

FEATURES

- Surface mount via 2 screws for easy installation
- Black flange included
- Chrome flange available
- IP67 rated
- Patented E Block™ technology prevents air and moisture from entering the lighthead
- Symmetrical center positioned wire exit
- 12" pigtail cable included

OPTION




PSFC
Chrome Flange

Model	Technology	LED Color	Lens Color	VDC	Amps	Patterns	Compliance	Dimensions
PS*01FCR	SOLO™	Blue, Amber or White	Clear	12	.82/Peak, .33/Avg	25 Scan-Lock™	SAE Class 1	11.11" (282mm) L x 1.68" (43mm) H x 0.53" (13mm) D
PS#02FCR	DUO™	Amber/White or Blue/Amber				69 Scan-Lock		



* Replace symbol in model number with letter indicating desired color: A = Amber, B = Blue, C = White
Replace symbol in model number with letter indicating color combo desired: F = Amber/White, M = Blue/Amber
Consult current price list for full list of available options at whelen.com/literature.



 WARNING: This product may contain chemicals known to the State of California to cause cancer and birth defects or other reproductive harm. For more information, visit whelen.com/regulatory.

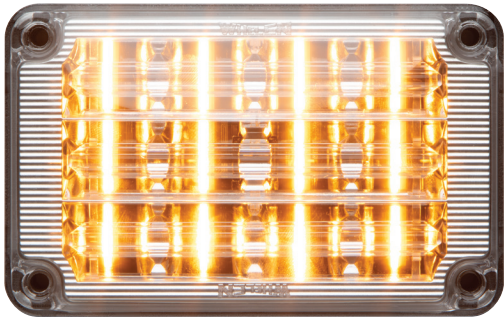
400 Series Plus



Features available across product family. May not apply to every model.



404G0SCR



404A0SCR



404C0SCR

FEATURES

- SAE Class 1 and CA Title 13 (Amber) apply to horizontal and vertical lights
- Linear-LED® design produces highly intense light that has superior wide-angle visibility
- Single-color LED SOLO™ or two-color interleaved DUO™ technology
- DUO models include White override option when Color 2 is White
- Connect and flash multiple Whelen devices together or in alternating patterns with Sync
- Built-in flasher included with SmartLED® models
- IP67 rated
- Patented E Block™ technology prevents air and moisture from entering lighthead
- Conformal coated electronics for moisture and vibration resistance
- Same mounting footprint and accessories as the original 400 Series

Model	Optics	Technology	Mount	LED Color	Amps	VDC	Patterns	Compliance	Dimensions
404*0S*R	SOLO	Steady LED	Includes grommet	Clear or Color Lens	0.8A at 12.8V,	12/24	Requires Optional Flasher	SAE Class 1	4.94" (124mm) W x 3.19" (77mm) H x 2" (50mm) D
404#0SCR	DUO			Clear			Requires Optional Flashers		4.94" (124mm) W x 3.19" (77mm) H x 1.38" (34mm) D
404*0Z*R	SOLO	Smart LED®		Clear or Color Lens	0.4A at 25.6V		Warning has 32 Scan-Lock™ Patterns		4.94" (124mm) W x 3.06" (77mm) H x 2.75" (69mm) D
404#0ZCR	DUO			Clear					

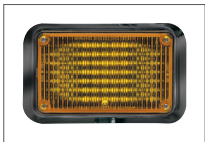


*Replace symbol in model number with letter indicating desired color: A = Amber, B = Blue, C = White, G = Green, R = Red
Replace symbol in model number with letter indicating desired DUO colors: D = Red/White, E = Blue/White, F = Amber/White, J = Red/Blue, K = Red/Amber, M = Amber/Blue, P = Amber/Green

OPTIONS



4EFLANGE
Chrome Flange



4FLANGEB
Black Flange



4TSMAB
Surface Mount Adapter,
Black



4TSMAC
Surface Mount Adapter,
Chrome



4EGRILP
Grille-Master™,
Chrome

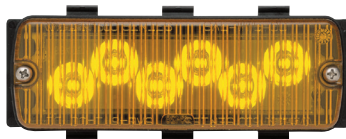


4EGRILPB
Grille-Master™
Black

500 Series



Features available across product family. May not apply to every model.



50A03ZAR



50A02ZAR



5V3A

FEATURES

- Available with Linear Super-LED® or TIR6™ optics
- Conformal coated electronics for moisture and vibration resistance
- Available with Clear or Color lens
- 6" pigtail cable included
- Visit www.whelen.com for a full list of available mounting hardware

Model	Optics	Technology	Mount	LED Color	Amps	VDC	Patterns	Compliance	Dimensions
50*02Z*R	Single-Color, Horizontal Mount	Linear Super-LED	Requires Optional Mounting	Amber or White	1.0/Peak, 0.40/Avg	12	25 Scan-Lock™	SAE Class 1	5" (127mm) W x 1.63" (41mm) H x 1.75" (44mm) D (Lighthouse Only)
50**2ZCR	Split-Color, Horizontal Mount			Amber/Amber, Amber/Blue, Amber/Green, Amber/White or White/White	0.5/Peak, 0.2/Avg Per Side				
5V*02Z*R	Single-Color, Vertical Mount			Amber or White	1.0/Peak, 0.4/Avg				
50A02SA1	Single-Color, Horizontal Mount for Waste Trucks		Includes Grommet	Amber					
50AA2SA2	Single-Color, Vertical Mount For Truck Cab		Includes Chrome Flange						
50*03Z*R	Single-Color, Horizontal Mount	TIR6 Super-LED	Requires Optional Mounting	Amber or White	0.63/Peak, 0.32/Avg	32 Scan-Lock			5" (127mm) W x 1.63" (41mm) H x 1.38" (35mm) D
50**3ZCR	Split-Color, Horizontal Mount			Amber/Amber, Amber/Blue, Amber/White or White/White	0.32/Peak, 0.13/Avg Per Side				
5V1*	Single-Color, Horizontal Mount	V-Series™ & TIR Super-LED		Amber or White	1.5/Peak, 0.6/Avg				5.38" (137mm) W x 2.13" (54mm) H x 1.63" (42mm) D
5V3*	Warning, Alley/Flood & Puddle Light, Horizontal Mount	V-Series Super-LED	Amber or White Warning, Steady White For Alley And Puddle	0.12 Warning 1.0 Alley Light 0.5 Puddle					



* Replace symbol in model number with letter indicating desired color: A = Amber, B = Blue, C = White, G = Green
Consult current price list for full list of available options at whelen.com/literature.

OPTIONS



5FLANGE
Chrome Flange, Also Available in Black and Polished Aluminum



5GROMMET
Grommet



5GBKT1
"L" Bracket



5TSMAB
Surface Mount Adapter, Also Available in Chrome



5LSMAC
Surface Mount Adapter, Also Available in Black



5BRUSH
Brush Guard

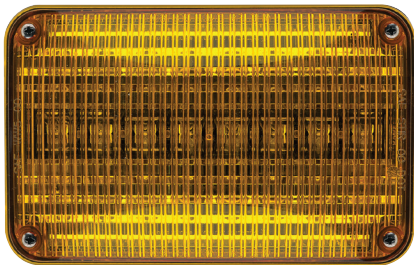
600 Series



Features available across product family. May not apply to every model.



6RBA



60A02SAR

FEATURES

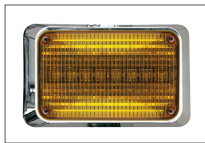
- Linear Super-LED® or Rota-Beam™ models available
- Surface mount and recess mount models
- Available with Clear or Amber lens
- Available in steady-burn or with an internal flasher
- 6” pigtail cable included

Model	Optics	Technology	Mount	LED Color	Lens Color	Amps	VDC	Patterns	Compliance	Dimensions
6RB*	Oscillating	Rota-Beam Super-LED®	Surface Recessed Mount	Amber or White	Amber	2.2/Peak, 1.1/Avg	12	14 Scan-Lock™	SAE Class 1	6.56" (167mm) W x 4.19" (106mm) H x 3.44" (88mm) D
6RB*C					Clear					
60*02S*R	Single-Color Steady	Single-Color Super-LED			Amber or Clear					
60*02F*R	Single-Color Flashing									

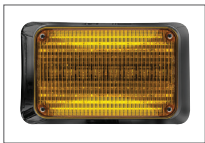


* Replace symbol in model number with letter indicating desired color: A = Amber, C = White/Clear
Consult current price list for full list of available options at whelen.com/literature.

OPTIONS



6EFLANGE
Chrome Flange



6FLANGEB
Black Flange



PLAST3V
Chrome Flange, Three Light, Also Available in Polished Aluminum



PLAST4V
Chrome Flange, Four Light, Also Available in Polished Aluminum

V23™ Series



Features available across product family. May not apply to every model.



V23ATPC



V23ATPB

FEATURES

- Models have 3-in-1 180° wide-angle warning, illumination, and puddle light
- Surface mount via 2 screws for easy installation
- Warning available with an internal flasher
- White lights available as steady-burn

Model	Optics	Technology	LED Color	Lens Color	Flasher	Amps	VDC	Patterns	Compliance	Dimensions
V23*TPB	V-Series™ (Includes Black Flange)	Super-LED®	Amber or White	Clear	Built-in	Warning 0.76/Peak, 0.3/Avg	12	26 Scan-Lock™	SAE Class 1	4.25" (109mm) W x 2.69" (68mm) H x 1.5" (38mm) D
V23*TPC	V-Series (Includes Chrome Flange)		Warning with White Illumination			Take-Down 0.62, Perimeter 0.12				



* Replace symbol in model number with letter indicating desired color: A = Amber, C = White
Consult current price list for full list of available options at whelen.com/literature.

OPTIONS



V23P20B
Black 20° Angled Surface Mount Housing



V23P20B
Chrome 20° Angled Surface Mount Housing



V23PEDB
Black Pedestal Mount Kit



V23PEDC
Chrome Pedestal Mount Kit

M9 Series



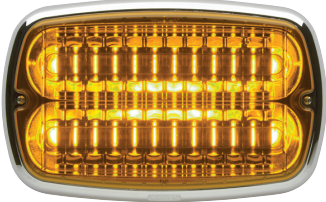
Features available across product family. May not apply to every model.



M9V2A



M9ACZ



M9A



M9V2A
side view

FEATURES

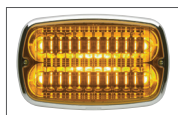
- Available in combination warning/scene light
- Available with Clear or Amber lens
- Hard-coated lenses resist environmental damage from sand, sun, salt, and road chemicals
- Available in steady-burn or with an internal flasher
- Surface mount via 2 screws for easy installation
- DVI™ enabled light patterns
- Patented E Block™ technology prevents air and moisture from entering the lighthouse
- IP67 rated

Model	Optics	Technology	LED Color	Lens Color	Amps	VDC	Patterns	Compliance	Dimensions	
M9*	Directional	SOLO™	Amber or White	Amber	3.0/Peak, 1.2/Avg	12	189 Scan-Lock™	SAE Class 1	10.38" (263mm) W x 6.5" (165mm) H x 1.38" (35mm) D	
M9°C			Clear	64 Scan-Lock						
M9F			Amber/White	Requires Flasher Purchased Separately						
M9*S		SOLO	Amber or White	Amber	189 Scan-Lock					
M9*CS				3.0/Peak, 0.6/Avg	26 Scan-Lock					
M9D#				2.4/Peak, 0.96/Avg						
M92#		DUO™	Amber/White	Clear	Warning 1.58 Scene Light 1.53					
M9*CZ	Combo			Amber Warning And Scene Light						
M9V2*	V-Series™	SOLO Warning, White Illumination	Amber or White Warning With White Illumination	Amber Warning, Clear Illumination	Warning 2.4/Peak, 0.96/Avg Scene Light 2.4 Amps		32 Scan-Lock			10.38" (263mm) W x 6.5" (165mm) H x 2.63" (66mm) D
M9V2*C				Clear						

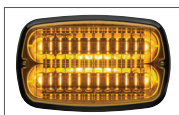


* Replace symbol in model number with letter indicating color desired: A = Amber, C = Clear/White
 # Replace symbol in model number with letter indicating split color desired: F = Amber/White
 Consult current price list for full list of available options at whelen.com/literature.

OPTIONS



M9FC
Chrome flange



M9FB
Black flange



M9FC900
Chrome flange. Adapts
M9 warning to 900
Series mounting



M9FCZ900
Chrome flange. Adapts
M9 scene light to 900
Series mounting



M6 & M7 Series



Features available across product family. May not apply to every model.



M6V2A



M6A



M7A



M6V2A Side View

FEATURES

- Available in single-or split-colors
- Available in combination Warning/Scene Light
- Available with Clear or Amber lens
- Hard-coated lenses resist environmental damage from sand, sun, salt, and road chemicals
- Available in steady-burn or with an internal flasher
- Surface mount via 2 screws for easy installation
- DVI™ enabled light patterns
- Patented E Block™ technology prevents air and moisture from entering the lighthead
- IP67 rated

Model	Optics	Technology	LED Color	Lens Color	Amps	VDC	Patterns	Compliance	Dimensions
M6*	Directional	SOLO™	Amber or White	Amber	2.25/ Peak, 0.9/Avg	12	189 Scan-Lock™	SAE Class 1 and R65 Class 1	6.75" (170mm) W x 4.31" (109mm) H x 1.3" (35mm) D
M6* C			Clear	64 Scan-Lock					
M6 F		Split-Color	Amber/White	Clear			Requires Flasher Purchased Separately		
M6* S		SOLO	Amber or White	Amber	2.4/Peak, 1.0/Avg		189 Scan-Lock™		6.7" (170mm) W x 4.31" (109mm) H x 1.4" (36mm) D
M6* CS				Clear					
M6 D#		DUO™	Amber/White or Amber/Blue	Clear					
M6 V2*	V-Series™	SOLO Warning, White Illumination	Amber or White Warning With White Illumination	Amber For Warning, Clear For Illumination	Warning 1.5/Peak, 0.60/Avg Perimeter 0.77	12	Warning has 32 Scan-Lock		6.75" (170mm) W x 4.31" (109mm) H x 2.25" (57mm) D
M6 V2*C				Clear					
M7*	Directional	SOLO	Amber or White	Amber	2.25/ Peak, 0.9/Avg	12	189 Scan-Lock		7.64" (194mm) W x 3.38" (86mm) H x 1.4" (36mm) D
M7* C				Clear			64 Scan-Lock		
M7 F		Split-Color	Amber/White	Clear			Requires Flasher Purchased Separately		
M7* S		SOLO	Amber or White	Amber	2.4/Peak, 0.6/Avg		189 Scan-Lock		
M7* CS				Clear					
M7 D#		DUO	Amber/White or Amber/Blue	Clear					



* Replace symbol in model number with letter indicating desired color: A = Amber, C = White
 # Replace symbol in model number with letter indicating split color desired: F = Amber/White, M = Blue/Amber
 Consult current price list for full list of available options at whelen.com/literature.

OPTIONS



M6FC / M7FC
Chrome Flange, Also
Available in Black
M6FB / M7FB



M6P15C
15° Chrome Flange,
Also Available in Black
M6P15B / M7P15B



M6FCV3
Chrome Flange for Three
Lightheads



M6FCV4
Chrome Flange for
Four Lightheads



M6BRUSH / M7BRUSH
Brush Guard

M2 & M4 Series



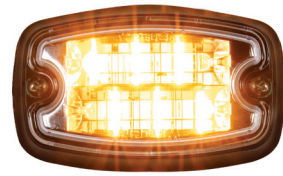
Features available across product family. May not apply to every model.



M4V2A



M4A



ML2AC



M2A



M4V2A
Side View

FEATURES

- Available in combination Warning/Scene Light
- Available with Clear or Color lens
- Hard-coated lenses resist environmental damage from sand, sun, salt, and road chemicals
- Available in steady-burn or with an internal flasher
- Surface mount via 2 screws for easy installation
- DVI™ enabled light patterns (M4 models only)
- Patented E Block™ technology prevents air and moisture from entering the lighthouse
- IP67 rated

Model	Optics	Technology	LED Color	Lens Color	Amps	VDC	Patterns	Compliance	Dimensions	
M2*	Directional	SOLO™	Amber or White	Amber	1/Peak, 0.45/Avg	12	25 Scan-Lock™ Including Steady-Burn	SAE Class 1, R65Class 1	4" (102mm) W x 2.5" (64mm) H x 1" (25mm) D	
M2*C				Clear			69 Scan-Lock			
M2F		Split-Color	Amber/White	25 Scan-Lock Including Steady-Burn						
M2W*	Wide-Angle	SOLO	Amber or White	Amber			74 Scan-Lock			
M2W*C				Clear						
ML2*	Linear LED	SOLO	Amber or White	Amber						
ML2*C										
ML2D#		DUO	Amber/White, Red/Amber or Amber/Green	Clear						
M4*		SOLO	Amber or White							
M4*C	Directional	SOLO	Amber or White	1.5/Peak, 0.6/Avg	64 Scan-Lock 150 Scan-Lock 64 Scan-Lock Requires flasher (Purchased Separately) 149 Scan-Lock					
M4F	Linear LED	Split-Color	Amber/White							
M4*S		SOLO	Amber or White							
M4*CS										
M4D#			DUO™	Amber, White						
M4V2*	V-Series™	SOLO Warning, White Illumination	Amber or White Warning With White Illumination	Clear	Warning 1.0/Peak, 0.40/Avg, Perimeter 0.77	25 Scan-Lock	5.5" (138mm) W x 3.38" (86mm) H x 1.85" (47mm) D			



* Replace symbol in model number with letter indicating desired color: A = Amber, C = White
 # Replace symbol in model number with letter indicating split color desired: F = Amber/White, K = Red/Amber, P = Green/Amber
 Consult current price list for full list of available options at whelen.com/literature.





OPTIONS



M4FC
Chrome Flange, Also
Available in Black M4FB



M4BRUSH
Brush Guard



M2FC
Chrome Flange, Also
Available in Black M2FB



M2GROM
Grommet Mount

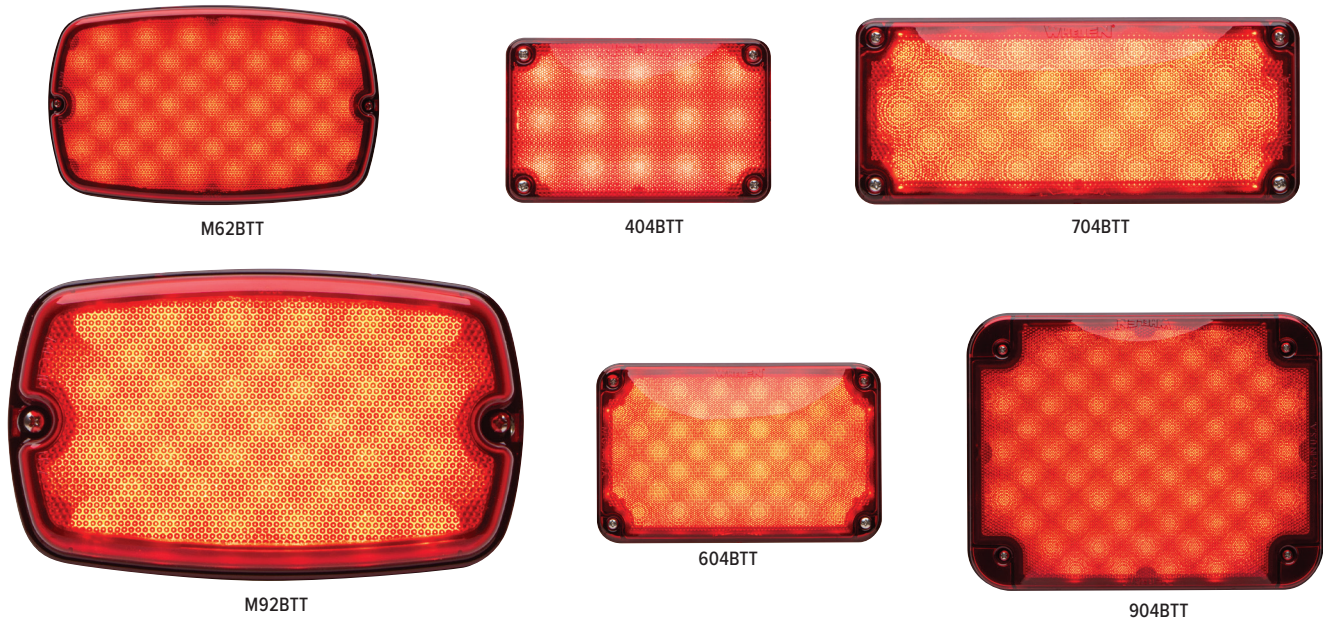


M2PEDB
Pedestal Mount, Also
Available in Chrome M2PEDC

Brake/Tail/Turn Lights



Features available across product family. May not apply to every model.



FEATURES

- Fully encapsulated for moisture, vibration, and corrosion resistance
- Hard-coated lenses resist environmental damage from sand, sun, salt, and road chemicals
- Patented E Block™ technology prevents air and moisture from entering the lighthead
- Surface mount via 2 screws for easy installation
- A variety of mounting brackets and optional Black and Chrome flanges available
- LED technology
- 6" pigtail cable included

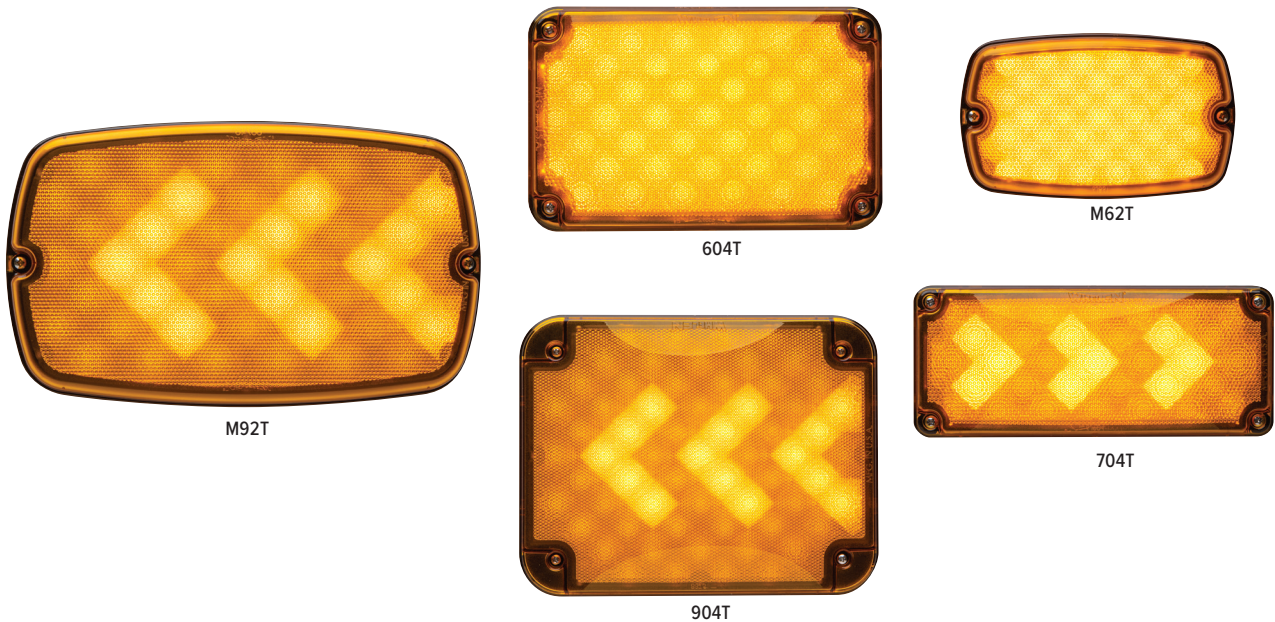
Model	Optics	Mount	Lens Color	12V Amps	VDC	Compliance	Dimensions
M62BTT	M6 Series	M6FB (Purchased Separately)	Red	0.53 Brake/Turn 0.06 Tail	12/24	See Website for Specific SAE Requirements	6.75" (170mm) W x 4.31" (109mm) H x 1.38" (35mm) D
M92BTT	M9 Series	M9FB (Purchased Separately)		0.43 Brake/Turn 0.05 Tail			10.38" (263mm) W x 6.5" (165mm) H x 1.38" (35mm) D
404BTT	400 Series	Surface Mount with Black Flange Included		0.7 Brake/Turn 0.06 Tail			4.94" (124mm) W x 3.19" (77mm) H x 2.75" (69mm) D
604BTT	600 Series			0.6 Brake/Turn 0.06 Tail			6.95" (177mm) W x 4.55" (116mm) H x 1.73" (44mm) D
704BTT	700 Series			0.65 Brake/Turn 0.05 Tail			7.27" (185mm) W x 3.07" (78mm) H x 1.28" (33mm) D
904BTT	900 Series			0.48 Brake/Turn 0.06 Tail			9.79" (249mm) W x 7.79" (198mm) H x 1.67" (43mm) D



Turn Signals



Features available across product family. May not apply to every model.



FEATURES

- Arrows may be mounted left or right
- Hard-coated lenses resist environmental damage from sand, sun, salt, and road chemicals
- Patented E Block™ technology prevents air and moisture from entering the lighthouse
- Surface mount via 2 screws for easy installation
- A variety of mounting brackets and optional Black and Chrome flanges available
- LED technology
- 6" pigtail cable included

Model	Optics	Mount	Lens Color	12V Amps	VDC	Patterns	Compliance	Dimensions
M62T	M6 Series	M6FB (Purchased Separately)	Amber	0.84	12/24	10 Scan-Lock™	See Website for Specific SAE Requirements	6.75" (170mm) W x 4.31" (109mm) H x 1.38" (35mm) D
M92T	M9 Series	M9FB (Purchased Separately)						10.38" (263mm) W x 6.5" (165mm) H x 1.38" (35mm) D
404T	400 Series	Surface Mount with Black Flange Included		0.63		1 Scan-Lock		4.94" (124mm) W x 3.19" (77mm) H x 2.75" (69mm) D
604T	600 Series			0.94		10 Scan-Lock		6.95" (177mm) W x 4.55" (116mm) H x 1.73" (44mm) D
704T	700 Series			0.84				7.27" (185mm) W x 3.07" (78mm) H x 1.28" (33mm) D
904T	900 Series			0.94		6 Scan-Lock		9.79" (249mm) W x 7.79" (198mm) H x 1.67 (43mm) D



Back-Up Lights



Features available across product family. May not apply to every model.



M92BU



M62BU



404BUH



604BU



704BU



5GC00WCR




404BUV

FEATURES

- Fully encapsulated for moisture, vibration, and corrosion resistance
- Hard-coated lenses resist environmental damage from sand, sun, salt, and road chemicals
- Patented E Block™ technology prevents air and moisture from entering the lighthead
- Surface mounts via 2 screws for easy installation
- A variety of mounting brackets and optional Black and Chrome flanges are available
- LED Technology
- 6" pigtail cable included

Model	Optics	Mount	LED Color	Lens Color	Amps	VDC	Compliance	Dimensions
5GC00WCR	5G Series	Grommet Mount	White	Clear	0.15	12	See Website for Specific SAE Requirements	7.44" (189mm) W x 3.19" (81mm) H x 1.25" (32mm) D
M62BU	M9 Series	M6FB (Purchased Separately)			0.18			6.75" (170 mm) W x 4.31" (109mm) H x 1.38" (35mm) D
M92BU	M6 Series	M9FB (Purchased Separately)			0.12			10.38" (263mm) W x 6.5" (165mm) H x 1.38" (35mm) D
404BUH	400 Series	Black Flange Included			0.13			4.94" (124mm) W x 3.19" (81mm) H x 2.75" (69mm) D
404BUV								6.95" (177mm) W x 4.55" (116mm) H x 1.73" (44mm) D
604BU	600 Series	Surface Mount with Black Flange Included			0.18			7.27" (185mm) W x 3.07" (78mm) H x 1.28" (33mm) D
704BU	700 Series							9.79" (249mm) W x 7.79" (198mm) H x 1.67" (43mm) D



 WARNING: This product may contain chemicals known to the State of California to cause cancer and birth defects or other reproductive harm. For more information, visit whelen.com/regulatory.

WHELEN
MANUFACTURED IN AMERICA

WHITE ILLUMINATION

Arges® Remote Spotlight

2YR MOTOR ONLY 5YR 12 YEAR WARRANTY X PROCLERA® ProFocus.

Features available across product family. May not apply to every model.



ARGCH1



ARGES1

FEATURES

- The innovative mechanical design provides 360° of continuous rotation and a 180° tilt range
- ProFocus™ Models: 5° spot to 60° flood variable beam width
- Spotlight Models: 5° spot
- Proclera® Silicone Optics
- Black die-cast aluminum housing
- CenCom Core® and WeCanX® compatible
- Drivetrain is electronically and mechanically protected
- Arges installs quickly and requires no A-pillar drilling or airbag interference
- Includes two 18" power control harnesses and one 12" communication cable
- Control head features a paddle and 3 push-buttons
- Program Arges with Whelen Command® or use alone with its paired control head
- Full Arges system passes CISPR 25 Class 3

Model	Description
ARGES1	5° Spotlight with Proclera® Silicone Optic
ARGES2	ProFocus®, Select from Spot/Flood Combination Light or Floodlight from the Control Head
ARGCH1	Control Head for Arges, Bail Bracket
ARGCH2	Control Head for Arges, Swivel Mount
ARGFM	Flat Mount, Universal
ARGFMKT	Arges Kit, Includes ARGES1 Spotlight, ARGCH1 Control Head and ARGFM Flat Mount
ARGLB1	Lightbar Mounting Bracket for Legacy®, Liberty™ II, Justice® and Freedom® IV Series Lightbars, Arges with Flat Mount Purchased Separately
ARGLB2	Lightbar Mounting Bracket for Cenator® Series Lightbars, Arges with Flat Mount Purchased Separately
ARG42D	Ram 1500/2500/3500, 2014-2018 and Ram 1500 (Classic), 2019-2021, Driver Side Fender Mounting
ARG47CD	Ford F-150, 2021-2022, Driver Side Fender Mount
ARG47CP	Ford F-150, 2021-2022, Passenger Side Fender Mount
ARG47D	Ford F-150, 2015-2020, Driver Side Fender Mount
ARG47BD	Ford F-250/F-350/F-450/F-550 Super-Duty, 2019-2022, Driver Side Fender Mount
ARG47BP	Ford F-250/F-350/F-450/F-550 Super-Duty, 2019-2022, Passenger Side Fender Mount
ARG49D	Chevy Silverado 1500, 2019-2023, Driver Side Fender Mounting
ARG49BD	Chevy Silverado 2500/3500, 2020-2024, Driver Side Fender Mounting



WorkSide™



Features available across product family. May not apply to every model.



WSLB

Model	Flange	Lens Color	VDC	Compliance	Dimensions
WSLC	Chrome	Clear	10/30	IP67 Rated	14.23" (362mm) L x 2.29" (59mm) H x 1.03" (27mm) D
WSLB	Black				

FEATURES

- Light is projected down and out to a 10'x10' ground area for increased visibility and expanded view of work areas
- Sleek, low-profile, Strip-Lite™ style footprint
- Patented E Block™ technology prevents air and moisture from entering the lighthead
- Selectable turn-on functionality
- Multiple turn-on styles ranging from instant to gradual (Slow, Medium, Fast, Instant)
- 3 low-power settings provide situation-specific lighting for a variety of scenarios
- Hard-coated lenses resist environmental damage from sand, sun, salt, and road chemicals
- Low power and low current consumption



Scene Lights



Features available across product family. May not apply to every model.

FEATURES

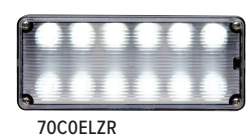
- Instant on with no warm-up time
- Hard-coated lenses resist damage from sand, salt, sun, and road chemicals
- Conformal coated electronics for moisture and vibration resistance



M9LZC



6SC0ENZR



70C0ELZR



9SC0ENZR



7SC0ENZR



M7ZC



M6ZC

Model	Optics	Technology	Cable	Mount	Lens Color	Amps	VDC	Dimensions
6SC0ENZR	600 Series	Super-LED®	6" Pigtail	Surface	White	1.5	12	6.5" (165mm) W x 4.13" (105mm) H x 1.75" (44mm) D
60C0ELZR				Recess		2.0		7.25" (184mm) W x 3.06" (78mm) H x 1.75" (44mm) D
7SC0ENZR	Surface			700 Series				9.13" (232mm) W x 7.13" (181mm) H x 1.75" (44mm) D
70C0ELZR	Recess					900 Series		6.75" (170mm) W x 4.31" (109mm) H x 1.38" (35mm) D
9SC0ENZR	Surface, Includes Chrome Flange			6.0				7.63" (194mm) W x 3.38" (86mm) H x 1.38" (35mm) D
M6ZC	M6 Series					Surface		10.38" (263mm) W x 6.5" (165mm) H x 1.38" (35mm) D
M7ZC	M7 Series			2.25/ Peak, 0.9/Avg				
M9LZC	M9 Series					6		
		Surface, Includes Chrome Flange						



Visit www.whelen.com for a full list of available mounting hardware

WARNING: This product may contain chemicals known to the State of California to cause cancer and birth defects or other reproductive harm. For more information, visit whelen.com/regulatory.

WHELEN®
MANUFACTURED IN AMERICA

M6 EZ Scene Light™



Features available across product family. May not apply to every model.



M62SLC

FEATURES

- Hard-coated lenses resist environmental damage from sand, sun, salt, and road chemicals
- Conformal coated electronics for moisture and vibration resistance
- Gradient Opti-Scenelight™ technology enables efficient use of light
- Selectable turn-on functionality
- Multiple turn-on styles ranging from instant to gradual (Slow, Medium, Fast, Instant)
- 3 low-power settings provide situation-specific lighting for a variety of scenarios
- Surface mount
- 6" pigtail cable included

Model	Flange	Lens Color	VDC	Compliance	Dimensions
M62SLC	Chrome	Clear	10/30	IP67 Rated	6.77" (172mm) W x
M62SLB	Black				4.37" (111mm) H x
					1.71" (43mm) D



600 EZ Scene Light™



Features available across product family. May not apply to every model.



604SLB

FEATURES

- Hard-coated lenses resist environmental damage from sand, sun, salt, and road chemicals
- Conformal coated electronics for moisture and vibration resistance
- Gradient Opti-Scenelight™ technology enables efficient use of light
- Selectable turn-on functionality
- Multiple turn-on styles ranging from instant to gradual (Slow, Medium, Fast, Instant)
- 3 low-power settings provide situation-specific lighting for a variety of scenarios
- Surface mount
- 6" pigtail cable included

Model	Flange	Lens Color	VDC	Compliance	Dimensions
604SLC	Chrome	Clear	10/30	IP67 Rated	8.27" (210mm) W x
604SLB	Black				5.2" (132mm) H x
					1.76" (45mm) D



M9 EZ Scene Light™



Features available across product family. May not apply to every model.



M92SLB

FEATURES

- Hard-coated lenses resist environmental damage from sand, sun, salt, and road chemicals
- Conformal coated electronics for moisture and vibration resistance
- Gradient Opti-Scenelight™ technology enables efficient use of light
- Selectable turn-on functionality
- Multiple turn-on styles ranging from instant to gradual (Slow, Medium, Fast, Instant)
- 3 low-power settings provide situation-specific lighting for a variety of scenarios
- Surface mount
- 6" pigtail cable included

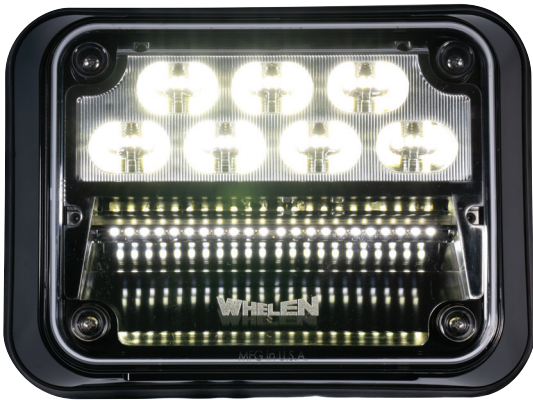
Model	Flange	Lens Color	VDC	Compliance	Dimensions
M92SLC	Chrome	Clear	12/24	IP67 Rated	10.35" (263mm) W x 6.28" (160mm) H x 2.39" (61mm) D
M92SLB	Black				



900 EZ Scene Light™



Features available across product family. May not apply to every model.



904SLB

FEATURES

- Hard-coated lenses resist environmental damage from sand, sun, salt, and road chemicals
- Conformal coated electronics for moisture and vibration resistance
- Gradient Opti-Scenelight™ technology enables efficient use of light
- Selectable turn-on functionality
- Multiple turn-on styles ranging from instant to gradual (Slow, Medium, Fast, Instant)
- 3 low-power settings provide situation-specific lighting for a variety of scenarios
- Surface mount
- 6" pigtail cable included

Model	Flange	Lens Color	VDC	Compliance	Dimensions
904SLC	Chrome	Clear	12/24	IP67 Rated	10.82" (275mm) W x 8.0" (203mm) H x 2.63" (67mm) D
904SLB	Black				



Pioneer Summit™



Features available across product family. May not apply to every model.

Download Pioneer™ Designer for full list of available options at whelen.com/download-software



S44MAB

FEATURES

- SAE 578 Color Temperature Certified
- Preconfigured spot, flood, or scene optics
- Available with White illumination, Amber marker, and warning lights
- Warning lights require remote flasher, purchased separately
- Individual control of each set of optics
- Extruded and die-cast aluminum powder-coated housing available in Black or White
- Screwless lens retainer design provides a clean finish and the improved ability to adjust optic configuration
- 100% solid-state electronics
- Multiple mounting options available
- 2' cable, connector, and heat shrink tubing included

Model	Description	Warning Lights	VDC	Dimensions	Length
S86MB	Scene/Flood	-	12	2.48" (63mm) H x 2.15" (55mm) W	86" (218cm)
S86MAB		4 Amber			
S86MRB		-			
S72MB		-			72" (183cm)
S72MAB		4 Amber			
S58MB		-			58" (147cm)
S58MAB		4 Amber			
S44MB		-			44" (112cm)
S44MAB		2 Amber			
S30MB		-			30" (76cm)
S30MAB		2 Amber			
S161MB	Flood	-	12	2.48" (63mm) H x 2.15" (55mm) W	16" (41cm)
S162MB	Spot				9" (23cm)
S091MB	Flood				
S092MB	Spot				



Pioneer Micro™



Features available across product family. May not apply to every model.

Download Pioneer™ Designer for full list of available options at whelen.com/download-software



MPPB



MPRW

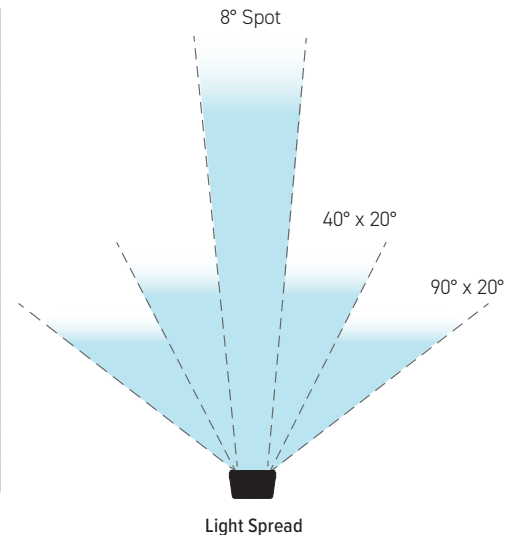


MPPBCS

FEATURES

- 8° spotlight pattern comes standard. Includes three additional optic lenses for a light pattern choice of:
 - 90° x 20° wide flood
 - 40° x 20° standard flood
 - 40° x 8° narrow flood
- Optic lens changes easily via removable lens retainer
- Injection molded polycarbonate lenses are impact resistant
- Die-cast aluminum powder-coated housing in Black or White
- Solid-state electronics
- LEDs are instant On/Off, eliminating ramp up time and high inrush current
- Correlated Color Temperature (CCT) of 5,700° Kelvin simulates bright midday light
- 6' cable included
- Five mounts available:
 1. Powder-coated stainless steel bail bracket with 3/8"-16 stud carriage bolt mount
 2. Recessed 90° angle mount with Chrome flange
 3. Recessed 15° angle mount with Chrome flange
 4. Pole/pedestal mount with handle available with or without On/Off switch
 5. Low-profile pedestal mount available with Chrome or Black back cover, with or without On/Off switch

Model	Mount	Housing	VDC	Lumens	Dimensions
MPBW	Bail/Stud	White	12	5,695	4.75" (121mm) W x 4.63" (118mm) H (w/ bracket) x 2.88" (73mm) D
MPBB		Black			
MPPW	Low-Profile Pedestal/Swivel	White			5.06" (129mm) W x 8.69" (220mm) H x 3.75" (82mm) D
MPPWCS		White			
MPPB		Black			
MPPBBS		Black			
MPPBCS	Straight Recessed	White			7.69" (195mm) W x 6.94" (176mm) H x 2.56" (65mm) D
MPRW		Black			
MPRB	15° Recessed	White			7.69" (195mm) W x 6.94" (176mm) H x 2.56" (65mm) D
MPR15W		White			
MPR15B		Black			
MPR15B		Black			



Light Spread

WARNING: This product may contain chemicals known to the State of California to cause cancer and birth defects or other reproductive harm. For more information, visit whelen.com/regulatory.

WHELEN®
MANUFACTURED IN AMERICA

Pioneer Nano™



Features available across product family. May not apply to every model.

Download Pioneer™ Designer for full list of available options at whelen.com/download-software



NP3BW

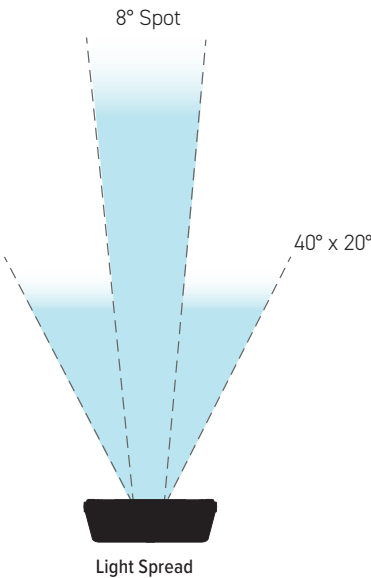


NP6BB

FEATURES

- 8° spotlight pattern comes standard. Includes additional optic lens for a light pattern of:
 - 40° x 20° flood
- Optic lens changes easily via removable lens retainer
- Injection molded polycarbonate lenses are impact resistant
- Die-cast aluminum powder-coated housing in Black or White
- Solid-state electronics
- LEDs are instant On/Off, eliminating ramp up time and high inrush current
- Correlated Color Temperature (CCT) of 5,700° Kelvin simulates bright midday light
- 6' cable included
- Powder-coated stainless steel bail bracket with 3/8"-16 stud carriage bolt mount

Model	Mount	Housing	VDC	Lumens	Dimensions
NP3BW	3-LED, with bail	White	12	1,566	3.5" (89mm) W x 2.25" (57mm) H x 1.75" (44mm) D
NP3BB		Black			
NP6BW	6-LED, with bail	White	12	2,552	3.5" (89mm) W x 3.0" (76mm) H x 1.75" (44mm) D
NP6BB		Black			



Pioneer SlimLine™



Features available across product family. May not apply to every model.

Download Pioneer™ Designer for full list of available options at whelen.com/download-software



PSL2BB

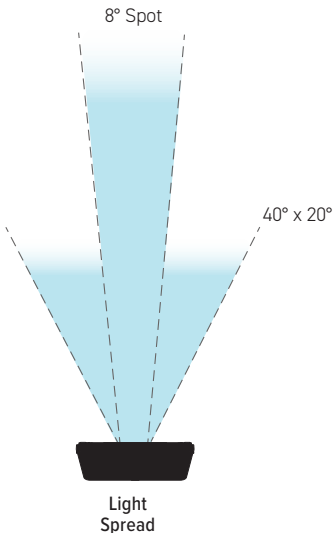


PSL1P

FEATURES

- Available in single or dual models
- Single Lamp Models: 8° spotlight pattern comes standard. Includes additional 40° x 20° flood lens
- Dual Lamp Models: 8° spotlight pattern comes standard. Includes two additional optic lenses for a light pattern choice of:
 - Dual 40° x 20° flood
 - 8° spot and 40° x 20° flood
- Optic lens changes easily via removable lens retainer
- Injection molded polycarbonate lenses are impact resistant
- Die-cast aluminum powder-coated housing in Black or White
- Solid-state electronics
- LEDs are instant On/Off, eliminating ramp up time and high inrush current
- Correlated Color Temperature (CCT) of 5,700° Kelvin simulates bright midday light
- 6' cable included
- Powder-coated stainless steel bail bracket

Model	Panels	Mount	Housing	VDC	Lumens	Dimensions
PSL1B	Single	Bail/Stud	White	12	5,103	7.06" (179mm) W x 3.25" (83mm) H x 2.75" (69mm) D
PSL1BB			Black			
PSL1P		Low-Profile Pedestal/Swivel	White			
PSL1PB			Black			
PSL1R		Semi-Recessed, Chrome Flange	White			
PSL1RB			Black			
PSL1R5		Semi-Recessed 15° Angle Chrome Flange	White			
PSL1R5B			Black			
PSL2B	Dual	Bail/Stud	White	12	10,206	12.69" (322mm) W x 3.25" (83mm) H x 2.75" (69mm) D
PSL2BB			Black			
PSL2P		Low-Profile Pedestal/Swivel	White			
PSL2PB			Black			
PSL2R		Semi-Recessed, Chrome Flange	White			
PSL2RB			Black			
PSL2R5		Semi-Recessed 15° Angle Chrome Flange	White			
PSL2R5B			Black			

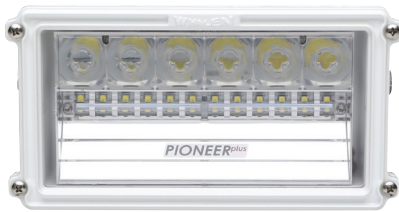


Pioneer Plus™

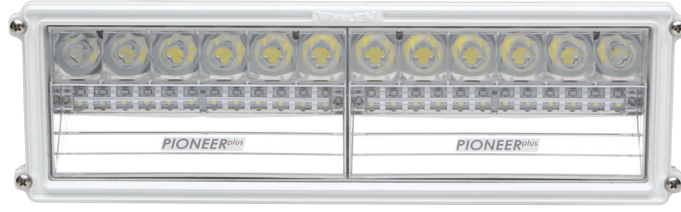
5YR 12 120 IP67 UL HARD COAT PROCLERA®

Features available across product family. May not apply to every model.

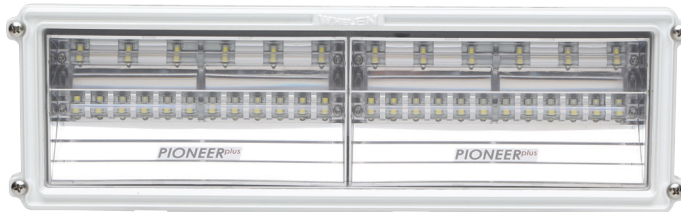
Download Pioneer™ Designer for full list of available options at whelen.com/download-software



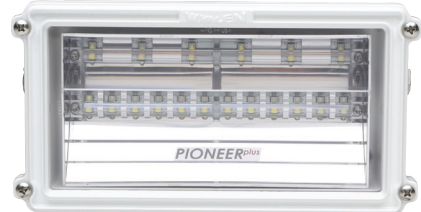
PCH1



PCH2



PFH2

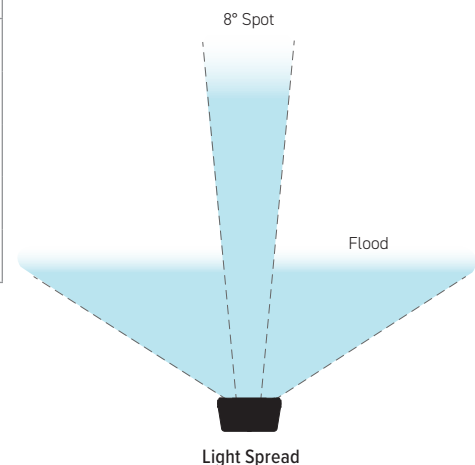


PFH1

FEATURES

- Available in single and dual models
- Pioneer Plus Combination Floodlight/ Spotlight features Proclera® Optic Technology
- Injection molded polycarbonate lenses are impact resistant
- Die-cast aluminum powder-coated housing in Black or White
- Solid-state electronics
- LEDs are instant On/Off, eliminating ramp up time and high inrush current
- Correlated Color Temperature (CCT) of 5,700° Kelvin simulates bright midday light
- Powder-coated stainless steel bail bracket
- DC models include 20' cable, AC models include 12" wire leads

Model	Description	Panels	VDC/ VAC	Lumens	Dimensions
PFH1	Floodlight	Single	12 VDC	10,130	8.19" (208mm) W x 4.25" (108mm) H x 3.0" (77mm) D
PCH1	Combination Flood/Spot				
PFH2	Floodlight	Dual		20,261	14.06" (357mm) W x 4.25" (108mm) H x 3.0" (77mm) D
PCH2	Combination Flood/Spot				
PFP1AC	Floodlight	Single	115 VAC	10,130	8.19" (208mm) W x 4.25" (108mm) H x 3.0" (77mm) D
PSP1AC	Spot Light, 8°				
PFP2AC	Floodlight	Dual		20,261	14.06" (357mm) W x 4.25" (108mm) H x 3.0" (77mm) D
PCP2AFS	Combination Flood/Spotlight			20,261	
PCP2ASF	Combination Spot/Floodlight		20,261		
PCP3	Max Combination Flood And 8° Spotlight	Max	12 VDC	19,305	
PCP3A			115 VAC	19,819	

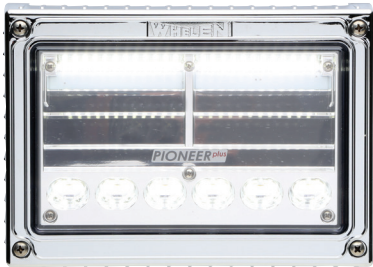


Pioneer Plus™ Surface Mount



Features available across product family. May not apply to every model.

Download Pioneer™ Designer for full list of available options at whelen.com/download-software



PCPSM1C

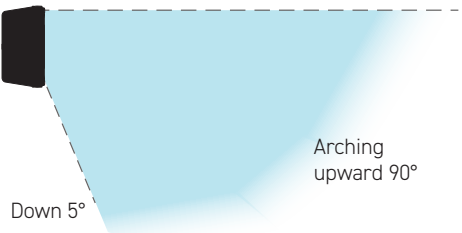


PCPSM2B

FEATURES

- Available in single and dual models
- Injection molded polycarbonate lenses are impact resistant
- Die-cast aluminum powder coated housing in Black or White
- Solid-state electronics
- LEDs are instant On/Off, eliminating ramp up time and high inrush current
- Correlated Color Temperature (CCT) of 5,700° Kelvin simulates bright midday light
- 2' cable included
- Surface mount:
 - Requires no body cut-outs
 - Built-in nylon screw grommets eliminate galvanic corrosion
 - Uniquely designed silicone grommet seals the 1" wire entry into the body
 - Available with Chrome or Black flange

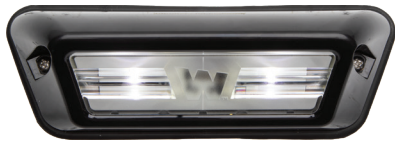
Model	Description	Panels	Flange	VDC/ VAC	Lumens	Dimensions
PCPSM1C	Combination Flood/Spot	Single	Chrome	12 VDC	10,444	9" (228mm) W x 6.38" (162mm) H x 1.75" (44mm) D
PCPSM1B			Black			
PCPSM1AC			Chrome	115 VAC	11,231	
PCPSM1AB			Black			
PCPSM2C		Dual	Chrome	12 VDC	20,888	16.25" (412mm) W x 6.38" (162mm) H x 1.75" (44mm) D
PCPSM2B			Black			
PCPSM2AC			Chrome	115 VAC	22,462	
PCPSM2AB			Black			



Perimeter Enhancement Light



Features available across product family. May not apply to every model.



PEL2B



PEL2R



PEL2W



PEL2C



PEL2Y

FEATURES

- Available in one-color or two-color
- Fully encapsulated for moisture, vibration, and corrosion resistance
- Light is projected downward at a 40° angle for widespread ground illumination
- Hard-coated lenses resist environmental damage from sand, sun, salt, and road chemicals
- Patented E Block™ technology prevents air and moisture from entering the lighthead
- Mounts to vertical surfaces and may be mounted inverted
- Molded rubber gaskets protect body panels
- 6" pigtail cable included

Model	Technology	Lens Color	Flange Color	Amps	VDC	Patterns	Dimensions
PEL2C	Super-LED®	White	Chrome	.65 Amps at 12 VDC .38 Amps at 24 VDC	12/24	Flash patterns require Core™ or Flasher (Purchased Separately)	7.9" (201mm) W x 2.69" (69mm) H x 2.0" (51mm) D
PEL2B			Black				
PEL2W			White				
PEL2R			Red				
PEL2Y			Yellow				
PEL2C*		Amber	Chrome				
PEL2B*			Black				
PEL2W*			White				
PEL2R*			Red				
PEL2Y*			Yellow				
PEL2C#		Two-Color Amber/White, Amber/Blue	Chrome				
PEL2B#			Black				
PEL2W#			White				
PEL2R#			Red				
PEL2Y#			Yellow				



* Replace symbol in model number with letter indicating desired color: A = Amber, C = White

Replace symbol in model number with letter indicating color combo desired: F = Amber/White, M = Amber/Blue



Interior Lighting



Features available across product family. May not apply to every model.



Model	Optics	Technology	Cable	Mount	Amps	VDC	Dimensions	
86CE1	Rectangular Interior Dome	Super-LED®	6" Pigtail	Requires Cut-Out, Includes Flange	2.0/High, 0.20/Low	12	8.19"(208mm) W x 6.44"(163mm) H x 1.25" (32mm) D	
T0CACCCR	2" Round Compartment	5mm LED		Surface	0.03		2.0" (51mm) Dia.	
20C0CDCR	2G Series (4" Round) Compartment	Super-LED 12 Diodes		6" Pigtail With Deutsch® Connector	Surface Mount Requires Optional Mounting		0.36	4.0" (102mm) Dia.
20C0CDCD								
5GC0CCCR	5G Series Compartment	Super-LED		Includes Black Grommet, Requires Optional Mounting	0.53		7.44" (189mm) W x 3.19" (81mm) H x 1.5" (38mm) D	
PSCOMPL	Strip-Lite™ Plus Compartment	6 Diodes LED		Surface			0.24	1.0" (25mm) H x 11.5" (292mm) W x 1.38" (35mm) D
PSCOMPH		12 Diodes LED					0.48	
F09PC	Fluorent Plus™ Compartment Tube Lighting	Super-LED	0.06				9.0" (228mm) W x 0.63" (16mm) H	
F18PC			0.13				18.0" (457mm) W x 0.63" (16mm) H	
F27PC			0.16				27.0" (686mm) W x 0.63" (16mm) H	
F36PC			0.18				36.0" (914mm) W x 0.63" (16mm) H	
F45PC			0.24				45.0" (114cm) W x 0.63" (16mm) H	
F54PC			0.32				54.0" (137cm) W x 0.63" (16mm) H	
F63PC			0.42				63.0" (160cm) W x 0.63" (16mm) H	



Consult current price list for full list of available options at whelen.com/literature.

Interior Lighting



Features available across product family. May not apply to every model.



8" Round Lightheads



6" Round Lightheads



3" Round Lightheads

Model	Optics	Technology	Cable	Mount	Housing	Switch	Amps	VDC	Dimensions	
3SC0CDCR	3" Round LED	Compartment White	6" Pigtail	Surface	Rubber Gasket Housing	-	0.38	12	3.0" (76mm) Dia.	
3SR0CDRR		Nighttime Illumination, Red					0.3			
3SBCCDCR		Compartment Split Blue/White					0.31			
3SRCCDCR		Compartment Split Red/White								
60C0EHCR	6" Round Super-LED®	Compartment 18 Diodes, White			-	-	-		1.2/High, 0.13/Low	0.63" (16mm) D x 6.0" (152mm) Dia.
60C0EJCS		Compartment 6 Diodes, White					On/Off		0.7/High	
60CBEGCS		Compartment 6 Blue Diodes & 6 White Diodes					Dual Switches For On/Off Color And On/ Off White		0.7/White 0.5/Blue	
60CREGCS		Compartment 6 Red Diodes & 6 White Diodes							0.7/White 0.5/Red	
70CREGCS	700 Series	Compartment 30 Red Diodes & 30 White Diodes					Backlit Dual Switches For On/Off Color And White		0.35/ White 0.5/Red 2mA/ Switch	7.25" (184mm) W x 3.07" (78mm) H x 1.25" (31mm) D
80C0EHCR	8" Round Super-LED Ambulance Light	18 Diodes, White		Recessed	Chrome Flange	Built-In Hi/Low Intensity	1.2/High, 0.13/Low		1.0" (24mm) D x 8.63" (218mm) Dia.	
80C00EZR		18 Diodes, White								White Flange
8WC00EZR										
80CBEHCR		6 White Diodes, 3 Blue Diodes					Chrome Flange			
80CREHCR		6 White Diodes, 3 Red Diodes								



Visit www.whelen.com for a full list of available mounting hardware



Illumination & Marker or Clearance Lights



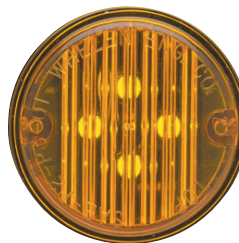
Features available across product family. May not apply to every model.



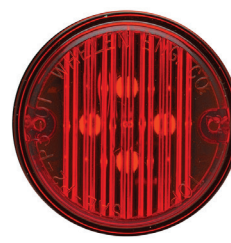
OSA00MCR



OSR00MCR



TOA00MAR



TOR00MRR

FEATURES

- OS™ Series includes Chrome housing; 45° angle illuminates step surfaces and areas needing angled lighting, interior or exterior use
- OS Series marker/clearance has Clear lens
- 2" Round Series marker or clearance light includes 2.50" adapter for customer supplied 2.50" grommet, plus a 3" and 3.50" flange mount

Model	Technology	Application	Mount	Housing	LED Color	Lens Color	Amps	VDC	Patterns	Compliance	Dimensions
OSA00MCR	LED	Marker or Clearance	Surface	Chrome	Amber	Clear	0.3	12	Steady	FMVSS108	1.5" (38mm) W x 1.0" (25mm) H x 0.5" (13mm) D
OSR00MCR					Red						
TOA00MAR			Grommet	-	Amber	Amber	0.8/Max, 0.5/Avg			-	2.0" (51mm) Dia.
TOR00MRR					Red	Red					



* Replace symbol in model number with letter indicating desired color: A = Amber, R = Red
Consult current price list for full list of available options at whelen.com/literature.

PAR Replacement Lamps



Features available across product family. May not apply to every model.



P46FLC



P46WLC



P36SLC

Model	Optics	Technology	Application	Mount	Housing	LED Color	Lens Color	Amps	VDC	Patterns	Dimensions
P46FLC	PAR-46	Super-LED®	8° Spotlight	Drop-In Replacement For Outdated Halogen	Black Powder Coated Die-Cast Aluminum Heatsink	White	Clear	1.9	12	Steady	1.81" (46mm) D x 5.63" (144mm) Dia
P46WLC			20° x 60° Floodlight								
P36SLC	PAR-36		2° Spotlight	Spotlight Lamps				0.65	24		2" (51mm) D x 4.5" (111mm) Dia.



Consult current price list for full list of available options at whelen.com/literature.
Visit www.whelen.com for a full list of available mounting hardware

PAR-36



Features available across product family. May not apply to every model.

FEATURES

- Floodlight or spotlight models
- Black die-cast aluminum housing
- Indexing locking lever on pedestal swivel
- Super-LED® with low current draw
- Stainless steel bracket and hardware included
- 2 intensities available



PFBS12



PFBP12C

Model	Diodes	Optics	Mount	Housing	VDC	Dimensions
PFBP12	12	Floodlight	Pedestal	Black	12	5.0" (128mm) W x 6.38" (162mm) H x 3.0" (76mm) D
PFBP12C				Black with Chrome Rear Cover		
PFBP6	6			Black		
PFBP6C						
PFBS12	12		Stud	Black		
PFBS12C				Black with Chrome Rear Cover		
PFBS6	6			Black		
PFBS6C				Black with Chrome Rear Cover		
PFBS6S				Black with Switch		
PFBS12S				Black with Switch		
PSBP12	12	Pedestal	Black			
PSBP12C			Black with Chrome Rear Cover			
PSBP6	6		Black			
PSBP6C			Black with Chrome Rear Cover			
PSBS12	12	Spotlight	Stud	Black		
PSBS12C				Black with Chrome Rear Cover		
PSBS6	6			Black		
PSBS6C				Black with Chrome Rear Cover		
PSBS6S				Black with Switch		
PSBS12S				Black with Switch		



Consult current price list for full list of available options at whelen.com/literature.



Handheld Spot/Floodlights




Features available across product family. May not apply to every model.

FEATURES

- 90lb. pull magnet mount
- Built-in push-button On/Off switch
- 8' pigtail cable with cigar plug included



Model	Description	VDC	Dimensions
P36HHS	PAR-36, Super-LED® Handheld Combination Spotlight/Floodlight	12/24	9.41" (239mm) H x 3.45" (88mm) D x 4.82" (123mm) Dia.
P46HHS	PAR-46, Super-LED Handheld Spotlight	12	10.5" (270mm) H x 3.75" (94mm) D x 6.0" (152mm) Dia

 Consult current price list for full list of available options at whelen.com/literature.

Rubber Housing Spot/Floodlights




Features available across product family. May not apply to every model.

FEATURES

- Rubber stud/swivel housing
- Available with or without lighthead
- Hard-coated lenses resist damage from sand, salt, sun, and road chemicals



Model	Description	VDC	Dimensions
P36SLCHG	PAR-36, Combination Spotlight/Floodlight	12/24	3.75" (94mm) D x 4.82" (123mm) Dia
P46SLCHG	PAR-46, Spotlight	12	3.69" (94mm) D x 6.09" (155mm) Dia

 Consult current price list for full list of available options at whelen.com/literature.

CONTROLS & FLASHERS

Power Control Centers



Features available across product family. May not apply to every model.



PCC10W



PCC6W



PCC4W



PCCS9RW



WCC9



PCC8R

FEATURES

- Backlit function windows
- Handheld or mounted to dash or console
- Includes LED "On" indicator
- Visit www.whelen.com for a full list of available switch panel models

Model	Type and Usage	Switches	Switch Type	Installation	VDC	Dimensions
PCCS9RW	High Current Center For Lightbars/Lighting Systems Without Need For Separately Mounted Relays Or Relay Boxes	6 Push-Buttons And One 4-Position Dip Switch Programmable Slide Switch	6 On/Off, Momentary 20 Amp Relays	11 Fast-On Outputs, 4-Position AMP Mate-N-Lok® -For Control, 2-Position Molex Mini Fit SR® - For Power	12	6.0" (152mm) W x 1.63" (40mm) H x 6.25" (159mm) D
PCCS9LW	Economical Control Center For Use With Freedom®, & Liberty® II Lightbars		6 On/Off, 1 Programmable On/Off Switch	One 9-Position and 5 Conductor AMP Mate-N-Lok Connector, to Match Lightbar Cables		6.0" (152mm) W x 1.63" (40mm) H x 4.0" (102mm) D
PCC4W	SPST, Lighted Switches	4	25 Amp	5 Wires Power Input, 5 Wires Output		3.25" (83mm) W x 2.25" (57mm) H x 4.0" (102mm) D
PCC6W		6	(6) 25 Amp	8-Position Rear Connector Block		6.63" (168mm) W x 2.25" (57mm) H x 3.63" (92mm) D
PCC6W1			(5) 25 Amp, 1 Momentary			
PCC10W		10	20 Amp			
PCC10W1			(9) 20 Amp, 1 Momentary			
PCC8R	8-Position Key Pad with Remote Relay Box	8	(3) 20 Amp Relays and (5) 10 Amp Relays	8-Position Rear Connector Block, Supplied Wiring Harness		7.25" (184mm) W x Relay Box: 1.25" (32mm) H x 4.75" (121mm) D
WCC9	Electronic Control for Freedom and Justice® WeCan® Lightbars	6 Push-Buttons And One 4-Position Dip Switch	6 Normally Open, Momentarily Closed Tactile Switches	Small Diameter, 22-Gauge, 2-C Cables, Mates To Your WeCan® Lightbar For Easy Installation	4.19" (106mm) W x 2.50" (64mm) H x 0.88" (22mm) D	
WCC92	Electronic Control for Liberty II and Legacy® WeCan Lightbars	Programmable Slide Switch For 10 Primary Functions	With 3-Position Slide Switch			



Flashers



Features available across product family. May not apply to every model.



UFM8



ULF44



UHF2150A



SSFPOS

Model	Usage	Solid-State	Outlets	Switching	Amps	VDC	Patterns	Dimensions
SSFPOS	Positive Switching Headlights	100%	2 Outlets	1x1	12.5 Per outlet	12	7	2.0" (50mm) W x 0.88" (22mm) H x 2.75" (70mm) D
UHF2150A	Positive Or Negative Switching Headlights	Controlled Relay Output					4 Outlets 4 Channels	2x2
ULF44	LED Lighthead		62 Alternating and Simultaneous	2.75" (70mm) W x 0.75" (26mm) H x 3.5" (89mm) D				
UFM8	Halogen/LED Lighthead		4 Outlets	2x2x2x2	17		2.75" (70mm) W x 0.75" (26mm) H x 3.5" (89mm) D	

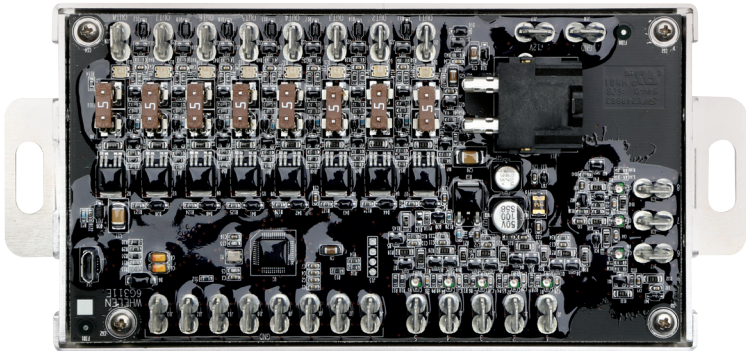
Consult current price list for full list of available options at whelen.com/literature.

SmartLogic™ Programmable Flasher



FEATURES

- Software is configurable via USB port
- Outputs are internally protected and fused
- 8 Inputs: 5 activating inputs, 3 non-activating for low power, photocell and brake/tail/turn cutoff
- Default flash pattern
- Day and night mode truck setups



SLFLASH

Model	Usage	Solid-State	Outlets	Switching	Amps	VDC	Patterns	Dimensions
SLFLASH	Auxiliary LED Lightheads	100%	8	Programmable	5 Per Outlet	12	64	6.38" (162mm) W x 3.38" (86mm) H x 3.38" (86mm) D

Consult current price list for full list of available options at whelen.com/literature.



CENCOM
CORE®

Created to enhance first responder safety, CenCom Core redefined control systems by providing the greatest configurability, speed, and expansion yet. Built to scale with your needs, Core is highly configurable and offers advanced automation, remote connectivity, and true system synchronization.

- Powered by WeCanX®
- Supports any combination of up to 99 WeCanX devices
- Seamlessly integrates with Whelen Command® software
- Remote firmware updates through USB-C with Whelen Command or over-the-air with Whelen Cloud Platform®
- Vehicle-to-Vehicle Sync
- Dynamic Variable Intensity™ light patterns
- 17 total inputs
- 23 total outputs
- 10-year warranty



CORE-S™

The newest addition to Whelen's industry-leading Core family of control systems, Core-S™ is a true one-box solution. Its space-saving design allows for installation in tight spaces like in a console or under a dash. And installation has never been easier with connector placement specifically designed for hard-to-reach areas. Core-S features a siren, input/output, and control functionality in one compact box along with an integrated control head.

- Powered by WeCanX
- Seamlessly integrates with Whelen Command software
- Remote firmware updates through USB-C with Whelen Command or over-the-air with Whelen Cloud Platform
- Vehicle-to-Vehicle Sync
- Dynamic Variable Intensity light patterns
- 11 total inputs
- 16 total outputs
- 10-year warranty



CORE-R™

Core-R™ is a vehicle control system engineered to enhance first responder and motorist safety with complete configurability, advanced automation, and remote connectivity.

- Powered by WeCanX®
- Supports any combination of up to 99 WeCanX devices
- Seamlessly integrates with Whelen Command® software
- Remote firmware updates through USB-C with Whelen Command or over-the-air with Whelen Cloud Platform®
- Vehicle-to-Vehicle Sync
- Dynamic Variable Intensity™ light patterns
- 8 total inputs
- Does not have its own outputs, supports Steady-Lock® through Remote Expansion Module
- 10-year warranty

CORE-R DOT

See page 27 for details



CORE-C™

Core-C™ is the heart of a sophisticated warning light system for work trucks. Delivering enhanced WeCanX safety features with plug-and-play ease of installation, it combined the intelligence of a WeCanX controller with the functionality of a control head in one compact package.

- Powered by WeCanX
- Seamlessly integrates with Whelen Command software
- Remote firmware updates through USB-C with Whelen Command
- Vehicle-to-Vehicle Sync
- 1 input, 1 output
- Supports a primary WeCanX warning device
- Supports one Remote Expansion Module to bring DVI™ and intelligent lighting control to a vehicle's peripheral lighting like Vertex™, ION™, or Micron™ lightheads.
- Supports Steady-Lock® through Remote Expansion Module
- 10-year warranty

WECANX® CONTROL SYSTEMS

C399	Amplifier Control Module, Flashing Outputs, Includes 3 CANports™, and Controls up to 99 Devices/Remote Modules, Control Heads Purchased Separately
C399R	Control Module, Includes 8 Digital Inputs, 3 CANports and Controls up to 99 Device/Remote Modules, Control Head and Other Optional Modules Purchased Separately. 10-30 VDC
C399S	200 Watt Amplifier Control Module, Flashing Outputs, Includes 3 CANports and Controls Up to 99 Devices/Remote Modules, Control Head and Other Modules Purchased Separately. 12 VDC
C399SH	100 Watt Amplifier Control Module with 100 Watt Howler™, Flashing Outputs, Includes 3 CANports and Controls Up to 99 Devices/Remote Modules, Control Head and Other Modules Purchased Separately. Single Howler Mounting Bracket purchased Separately, 12 VDC
C399S6	Single Unit 200 Watt Siren with Integrated 3 Section Control Head and 8 Push-Buttons, 4-Position Slide Switch with a 7-Position Rotary Knob. Manual, Airhorn Plus 3 Traffic Advisor™ Switches and Microphone with Extension Cable
C399S6H	Single Unit 100 Watt Siren and 100 Watt Howler with Integrated 3 Section Control Head and 8 Push-Buttons, 4-Position Slide Switch with a 7-Position Rotary Knob. Manual, Airhorn Plus 3 Traffic Advisor Switches and Microphone with Extension Cable, Single Howler Mounting Bracket purchased Separately, 12VDC
C399S7	Single Unit 200 Watt Siren with Integrated 3 Section Control Head and 21 Push-Buttons, 4-Position Slide Switch, Microphone with Extension Cable
C399S7H	Single Unit 100 Watt Siren and 100 Watt Howler with Integrated 3 Section Control Head and 21 Push-Buttons, 4-Position Slide Switch, Microphone with Extension Cable, Single Howler Mounting Bracket purchased Separately, 12 VDC
CCP9	Core-C™ - Core™ Control Point and Switch Combination, 4-Position Slide Switch and 6 Push-Buttons. One 5 Amp Output for Auxiliary Lighting. LED TA Indicator, 10-30 VDC and V2V Sync Capable
CCPKT	Core Control Point for use with WeCanX Devices when NOT using CenCom Core® (For use when not Purchasing a Lightbar)
C399RD1	Core-R™ DOT - Control Module, Includes 8 Digital Inputs, 1 WeCanX Port and Controls up to 99 Device/Remote Modules, and One CEM16 Module Mounted in a Single Box, Control Head and Other Optional Modules Purchased Separately. 12 VDC
C399RD2	Core-R™ DOT - Control Module, Includes 8 Digital Inputs, 1 WeCanX Port and Controls up to 99 Device/Remote Modules, and Two CEM16 Modules Mounted in a Single Box, Control Head and Other Optional Modules Purchased Separately. 12 VDC

WECANX CONTROL HEADS

CCTL5	Includes Handheld Combination Microphone and Controller, 5-Position Progressive Light/Siren Control, 9 Push-Buttons and a Microphone Extension Cable
CCTL6	Includes 3 Section Control Head and 8 Push-Buttons, 4-Position Slide Switch with a 7-Position Rotary Knob. Manual, Airhorn Plus 3 Traffic Advisor Switches and Microphone with Extension Cable
CCTL7	Includes 3 Section Control Head and 21 Push-Buttons, 4-Position Slide Switch, Microphone with Extension Cable
CCTL8	Includes 6 Push-Buttons and a 4-Position Slide Switch, Includes Microphone
CCTL8LM	Includes 6 Push-Buttons and a 4-Position Slide Switch (Microphone Not Included)
CCTL9	Includes 2 Section Control Head and 6 Push-Buttons with a 7-Position Rotary Knob, Microphone and Microphone Extension Cable
CCTL9LM	Includes 2 Section Control Head and 6 Push-Buttons with a 7-Position Rotary Knob, (No Microphone and Microphone Extension Cable)
CCTL10	Includes 3 Section Control Head and 21 Push-Buttons, 1 Master Push-Button, Microphone with Extension Cable
CCTLHARN	CenCom Core Control Head Harness Kit, for use with any Non-Primary Control Head exluding the CCTL5, Control Heads Purchased Separately

OBDII CANPORT™ INSTALLATION KITS FOR CORE™

C399K1	OBDII CANport™ Installation Kit for C399 for 2016-2019 Ford Interceptor Utility, 2020-2022 Ford Interceptor Utility used with Factory Option 61B, 2016-2020 Ford F-150, 2018-2022 Ford, F-250/350 2018-2019 Ford, F-450/550, Expedition and Transit 150/250/350, 2017-2019 Ford Fusion (All Models), 2020 Ford Fusion Hybrid and 2016-2017 Dodge Charger (Not for use with Core-R™ and C399S)
C399K2	OBDII CANport Installation Kit for C399 for Chevy, 2017-2020 Tahoe, 2017-2018 Silverado 1500, 2019-2021 Silverado 1500 (Body Style), 2017-2019 Silverado 2500/3500, 2019-2021 Colorado 1500, 2019 Impala, 2018-2020 Suburban (Not for use with Core-R and C399S)
C399K3	OBDII CANport Installation Kit for C399 for 2018-2020 Ram Classic 1500, 2019-2020 Ram 1500, 2021-2022 Ram 2500/3500, 2018-2022 Dodge Charger and 2018-2022 Dodge Durango (Not for use with Core-R and C399S)
C399K4	2020-2021 Ford Interceptor Utility Gateway Installation Kit for C399, for use WITHOUT Ford 61B Factory Option (Not for use with Core-R and C399S)
C399K5	2020-2021 Ford Expedition, 2020-2022 F-250/F-350/F-450/F550/F-600 Super Duty and 2020-2021 Transit Gateway Installation Kit for C399 (Not for use with Core-R and C399S)
C399K6	2021-2022 Chevy Tahoe and 2021-2022 Suburban Installation Kit for C399 (Not for use with Core-R and C399S)
C399K7	Ford F-150, 2021-2023, Ford F-150 Lightning, 2022-2023, Ford Police Interceptor Utility , 2020-2022, Ford Escape, 2022-2023, Ford Expedition, 2022-2023, and Ford Mustang Mach-E, 2021-2023, Ford Ranger, 2022-2023, Installation Kit for C399 (Not for use with Core-R™ and C399S)
C399K8	2021-2022 Tesla Model Y Installation Kit (Not for use with Core-R and C399S)
C399K9	2022 Chevy Silverado PPV/LTD, 2022 Chevy Colorado Installation Kit (Not for use with Core-R and C399S)

OBDII CANPORT INSTALLATION KITS FOR CORE-R™ AND CORE-S™

C399RK1	OBDII CANport Installation Kit for C399R and C399S Only, for 2016-2019 Ford Interceptor Utility, 2020-2022 Ford Interceptor Utility used with Factory Option 61B, 2016-2020 Ford F-150, 2018-2022 Ford F-250/350, 2018-2019 450/550, Expedition and Transit 150/250/350, 2017-2019 Ford Fusion (All Models), 2020 Ford Fusion Hybrid and 2016-2017 Dodge Charger
C399RK2	OBDII CANport Installation Kit for C399R Only, for Chevy, 2017-2020 Tahoe, 2017-2018 Silverado 1500, 2019-2022 Silverado 1500 (Body Style), 2017-2019 Silverado 2500/3500, 2019-2021 Colorado 1500, 2019 Impala, 2018-2020 Suburban
C399RK3	OBDII CANPort™ Installation Kit for C399R and C399S Only, for Ram Classic 1500, 2018-2020, Ram 1500, 2019-2020, Ram 2500/3500, 2021-2022, Dodge Charger, 2018-2022, and Dodge Durango, 2018-2023
C399RK4	2020 Ford Interceptor Utility Gateway Installation Kit for C399R and C399S Only, for use WITHOUT Ford 61B Factory Option
C399RK5	2020-2021 Ford Expedition, 2020-2022 F-250/F-350/F-450/F550/F-600 Super Duty and 2020-2021 Transit Gateway Installation Kit for C399R and C399S Only
C399RK6	2021-2022 Chevy Tahoe and 2021-2022 Suburban Installation Kit, for C399R and C399S Only
C399RK7	Ford F-150, 2021-2023, Ford F-150 Lightning, 2022-2023, Ford Police Interceptor Utility , 2020-2022, Ford Escape, 2022-2023, Ford Expedition, 2022-2023, and Ford Mustang Mach-E, 2021-2023, Ford Ranger, 2022-2023, Installation Kit for C399R and C399S Only
C399RK8	2021-2022 Tesla Model Y Installation Kit for C399R and C399S Only
C399RK9	2022 Chevy Silverado PPV/LTD, 2022 Chevy Colorado Installation Kit for C399R and C399S Only

**Core-S utilizes the Core-R OBD2 Cable. Please make sure that you use the C399RK* when specifying Core-S. The C399K* will not work as it uses a different connector.*

SYSTEM EXPANSIONS

CEM8	8 Output, 4 Input WeCanX® Expansion Module
CEM16	16 Output, 4 Input WeCanX Expansion Module
CEM4HC	WeCanX High Current Remote Expansion Module, 4-15 Amp Output
CTA	WeCanX Traffic Advisor™ Remote Module, Traffic Advisor Purchased Separately
CEXAMP	WeCanX External Amplifier
CV2V	Vehicle To Vehicle Module, Includes Internal Antenna

Lighting Compliance

KKK 1822-F - Federal Ambulance Specification

CAC, Title 13, Article 22 (Red, Blue and Amber Lightheads)

Warning Lamps and Devices:

SAE J595 - Directional Flashing Optical Warning Devices for Authorized Emergency, Maintenance, and Service Vehicles (Aug 21)

SAE J845 - Optical Warning Devices for Authorized Emergency, Maintenance, and Service Vehicles (Aug 21)

Test Procedures and Materials:

SAE J575 - Test Methods and Equipment for Lighting Devices for Use on Vehicles Less than 203 cm in Overall Width (Apr 21)

SAE J578 - Chromaticity Requirements for Ground Vehicle Lamps and Lighting Equipment (Apr 20)

SAE J2139 - Tests for Signal and Marking Devices Used on Vehicles 203 cm or More in Overall Width (Dec 14)

Signaling and Marking Lighting Devices and Systems:

FMVSS108 - Federal Motor Vehicle Safety Standards

NFPA 1901 - (2009 Edition) For NFPA Application Consult Current NFPA Specification Lighting Packages Catalog

SAE J585 - Tail Lamps (Rear Position Lamps) for Use on Motor Vehicles Less than 203 cm in Overall Width (Jun 14)

SAE J586 - Stop Lamps for Use on Motor Vehicles Less than 203 cm in Overall Width (May 16)

SAE J588 - Turn Signal Lamps for Use on Motor Vehicles Less than 203 cm in Overall Width (Mar 21)

SAE J592 - Sidemarker Lamps for Use on Road Vehicles Less than 203 cm in Overall Width (Sep 16)

SAE J593 - Backup Lamp (Reversing Lamp) (Oct 6)

SAE J914 - Side Turn Signal Lamps for Vehicles Less than 12 m in Length (Aug 14)

SAE J1432 - Rear High Mounted Stop Lamps and Rear High Mounted Turn Signal Lamps for Use on Vehicles 203 cm or More in Overall Width (Jan 16)

SAE J1889 - LED Signal and Marking Lighting Devices (Jul 19)

SAE J1957 - Center High Mounted Stop Lamp Standard for Vehicles Less than 203 cm Overall Width (Jun 11)

SAE J2039 - Side Turn Signal Lamp for Long Vehicles (Aug 11)

SAE J2040 - Tail Lamps (Rear Position Lamps) for Use on Vehicles 203 cm or More in Overall Width (Jan 16)

SAE J2042 - Clearance, Sidemarker, and Identification Lamps for On-Road Vehicles 203 cm or More in Overall Width (May 18)

SAE J2261 - Stop Lamps and Front- and Rear-Turn Signal Lamps for Use on Motor Vehicles 203 cm or More in Overall Width (July 16)



Index

0S™ Series	48	L10 Series	7	Power Control Centers	80
2G & 5G Series	49	L21 & L22 Series	8	QuickFit™	28
3" Round Series	48	L31 & L32 Series	5	R316 & R416 Series	4
4" Round Series	49	L41 Series	6	Responder® HD Series	18
400 Series Plus	52	L50 Series	6	Responder® R1LP Series	19
500 Series	53	Legacy® Series	14	Responder® R2LP Series	20
600 EZ Scene Light™	66	Liberty™ II Series	12	Rubber Housing Spot/Floodlights	79
600 Series	54	M2 & M4 Series	58	Scene Lights	65
900 EZ Scene Light™	67	M6 EZ Scene Light™	66	SlimLighter®	38
Arges® Remote Spotlight	64	M6 & M7 Series	57	Slim-Miser™	38
Avenger® II Series	36	M9 EZ Scene Light	67	SmartLogic™ Programmable Flasher	81
Back-Up Lights	62	M9 Series	56	SpitFire ION™	37
Brake/Tail/Turn Lights	60	Micron™ Series	47	Strip-Lite™ Plus Sequence Light	50
CenCom Core®	82	Mini Century™ Series	21	Strip-Lite™ Plus Warning Light	51
Core-C™	83	Mini Edge® 9X Series	24	TIR3™, LIN3™, LINZ6™, & LINV2™ Series	46
Core-R™ DOT System	27	Mini Freedom® IV Series	23	Towman's™ Series	16
Core-R™	83	Mini Justice® Series	22	Tracer™ WeCanX®	35
Core-S™	82	Mini Legacy® Series	26	Traffic Advisor™ 2200 Series	33
Dominator™ & Dominator Plus™ Series	39	Mini Liberty™ II Series	25	Traffic Advisor™ Arrows	33
Edge® 9X Series	13	Mini T-Series™	42	Traffic Advisor™ Dominator™ Series	30
Flashers	81	Municipal Systems	27	Traffic Advisor™ Flat Mount	31
FlatLighter™	37	PAR-36	78	Traffic Advisor™ Front Load	32
Freedom® IV DUO™ & DYAD™ Series	10	PAR Replacement Lamps	77	Traffic Advisor™ Rear Slot Mount	31
Handheld Spot/Floodlights	79	Perimeter Enhancement Light	74	Traffic Advisor™ TAC8 (Economy)	32
Illumination & Marker or		Pioneer Micro™	69	T-Series™	42
Clearance Lights	77	Pioneer Nano™	70	Turn Signals	61
Interior Lighting	75	Pioneer Plus™	72	V23™ Series	55
ION™ Series	40	Pioneer Plus™ Surface Mount	73	Vertex™ Series	47
ION™ V-Series™	41	Pioneer SlimLine™	71	WeCanX® 2250	34
Justice® Series	15	Pioneer Summit™	68	WorkSide™	65

WHELEN ENGINEERING
COMPANY, INC.

COMMERCIAL FLEET PRODUCTS

SAFETY LIGHTS AND ACCESSORIES

Distributed by:

WHELEN[®]
MANUFACTURED IN AMERICA

@WhelenENG



NASCAR[™]
OFFICIAL WARNING LIGHTS

Preferred Warning Lights of



Whelen Engineering Company
(860) 526-9504
www.whelen.com

Whelen Engineering reserves the
right to upgrade and improve
products without notice.

© 2024 Whelen Engineering
Company, Inc. Printed in U.S.A.
Code No. C10742W - 03/24

All products proudly designed, manufactured,
and assembled in the U.S.A.
• ISO 9001 Registered QMS

WHELEN ENGINEERING
COMPANY, INC.