

# The Whelen Cloud Platform<sup>®</sup>



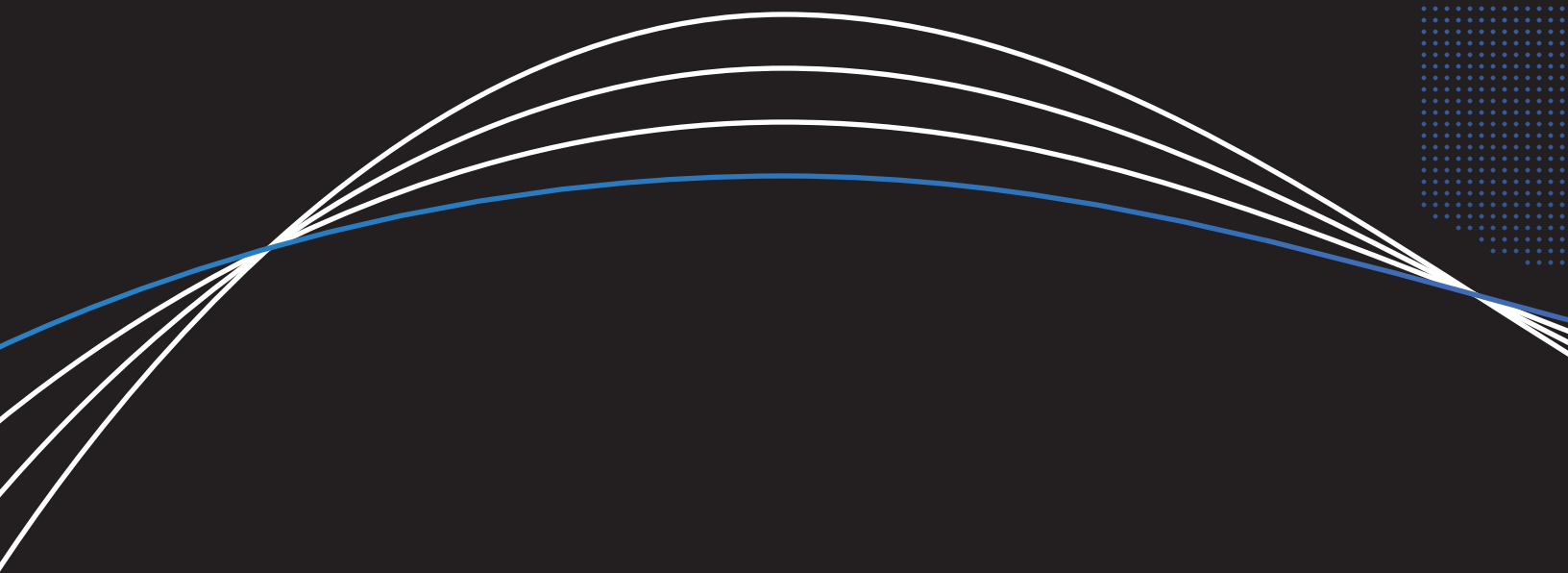


## The Whelen Cloud Platform<sup>®</sup>

The best way to keep your fleet up-to-date, enhance safety, and more.

The Whelen Cloud Platform is a cloud-based vehicle communication platform that sends and receives data through cellular networks.

Manage vehicle configurations and firmware updates over-the-air, create faster response times with real-time information to pinpoint vehicle locations, and easily organize your fleet and Whelen product information. All of your data is safe and available, wherever you are.







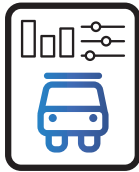
# WHY WCP<sup>®</sup>

With the Whelen Cloud Platform<sup>®</sup>, you get everything you need to manage your fleet.



## THE WHELEN CLOUD LIVE MAP

The Whelen Cloud Platform Live Map provides real-time information to accurately pinpoint where fleet vehicles are located, creating faster response times and advanced situational awareness.



## MAINTENANCE

Easily keep track of important vehicle data like service schedules, mileage, and engine hours enabling fleet managers to make informed decisions on repairs.



## GEOFENCE CONTROLLED TECH

Use geographic boundaries to trigger automated functions that help keep first responders and motorists safe, like changing a vehicle's flash patterns when entering a work zone or reducing siren tone intensity when in a school zone.



## PLATFORM ALERTS

Create custom user groups to be notified when an event takes place such as when a vehicle is due for service or when an officer releases their K9.



## USER ACCOUNTS

Easily create multiple Whelen Cloud Platform<sup>®</sup> user profiles and manage user roles and access.



## DIGITAL ALERTS

Send advance-warning Digital Alerts to notify motorists when emergency vehicles are approaching or stopped ahead. Real-time alerts improve motorists' situational awareness and reduce the likelihood of collision by up to 90%.



## RESPONDER-TO-RESPONDER ALERTS

Help prevent intersection collisions by automatically notifying other emergency vehicles in active response mode when approaching the same intersection.



## ANALYTICS & REPORTING

Easily store, gather, and visualize your vehicle and fleet statistics to generate custom reports. View vehicle status changes, heatmaps indicating where vehicles travel the most, and response-mode information such as speed and location.



## FIRMWARE & CONFIGURATION OTA

Easily manage your Whelen firmware and configurations over-the-air. Quickly push firmware updates to your entire fleet and receive update notifications instantly. Configurations are managed in your configuration library.



## FLEET VEHICLE REGISTRY

Add, modify, view, and organize all of your vehicles from an easy-to-use dashboard.



## WHELEN DEVICE REGISTRY

Manage a complete list of Whelen WeCanX® devices installed in your vehicles.



## DEVICE LOCK

Prevent configuration modifications and firmware updates to individual vehicles. Designated users can lock individual vehicles, groups of vehicles, or the entire fleet from a simple workflow.



## MOBILE READY

Easily and quickly register Whelen hardware and fleet vehicles right from your smart phone or tablet.

# ENHANCE THE SAFETY OF FIRST RESPONDERS, ROADWAY WORKERS, AND MOTORISTS WITH DIGITAL ALERTS

Whelen now offers Digital Alerts from HAAS Alert's Safety Cloud® service through our Vehicle Safety Gateway® and Whelen Cloud Platform®. Safety Cloud protects responders by enabling you to deliver advance-warning Digital Alerts to drivers notifying them when emergency vehicles are approaching or stopped ahead. Digital Alerts are received through navigation apps and vehicle infotainment systems up to 30 seconds in advance, reducing the risk of collision by up to 90% and making roadways safer for motorists and first responders. Digital Alerts can be turned on and off so you can choose when and if you want to alert the public. And Responder-to-Responder (R2R™) Alerts help prevent intersection collisions between emergency vehicles. R2R Alerts automatically notify other emergency vehicles in active response mode when approaching the same intersection en route to a scene.





# TRAFFIC PREEMPTION PARTNERSHIPS .....



**APPLIED**  
INFORMATION

To further enhance safety for first responders and other motorists, Whelen has partnered with Applied Information, expanding the vehicle preemption capabilities of the Whelen Cloud Platform. The Applied Information preemption and priority solution uses cellular and direct communication with GPS technology making it an efficient way to ensure that emergency responders reach their destinations safely with reduced response times.

The Whelen Cloud Platform® has now integrated with Miovision's Opticom Cloud Emergency Vehicle Preemption (EVP) Solution. Opticom mitigates risk and expedites emergency response time by clearing intersections and giving officers the ability to respond to emergencies safely. Opticom has reduced intersection crash rates by up to 70% while enabling officers to arrive up to 25% faster.

**mioVISION**  
opticom

# KEEPING YOUR DATA SAFE

Whelen takes your privacy and security seriously. The Whelen Cloud Platform® is designed to protect your privacy and is built with the most powerful security technologies. All of your information - like your vehicle registries, Live Map data, and configuration library - is protected. We employ strict policies to protect your information.

We partnered with and built upon the Amazon Web Services (AWS) infrastructure, including their security model. We participated in an independent third-party security audit and verification of our edge-to-edge network, including our hardware. The VSG® is secured at the hardware level for a significant gain in IoT device security.



# OUTFITTING YOUR FLEET WITH WCP® STARTS HERE



# THE VEHICLE SAFETY GATEWAY®

With its compact size, the Vehicle Safety Gateway (VSG®) bridges connectivity to provide over-the-air communication from the Whelen Cloud Platform® to CenCom Core® and WeCanX® devices. The VSG communicates to the Whelen Cloud using its own SIM card and a separate, low-profile antenna. Verizon frontline support available for qualifying users.



Exterior



Interior

## VSG SPECS

- GPS location (integrated within the cellular modem)
- CenCom Core system inputs (via ethernet)
- 8 logic inputs
- 1 CANport™
- 7.1" L x 4.6" W x 1.1" D

## ANTENNA SPECS

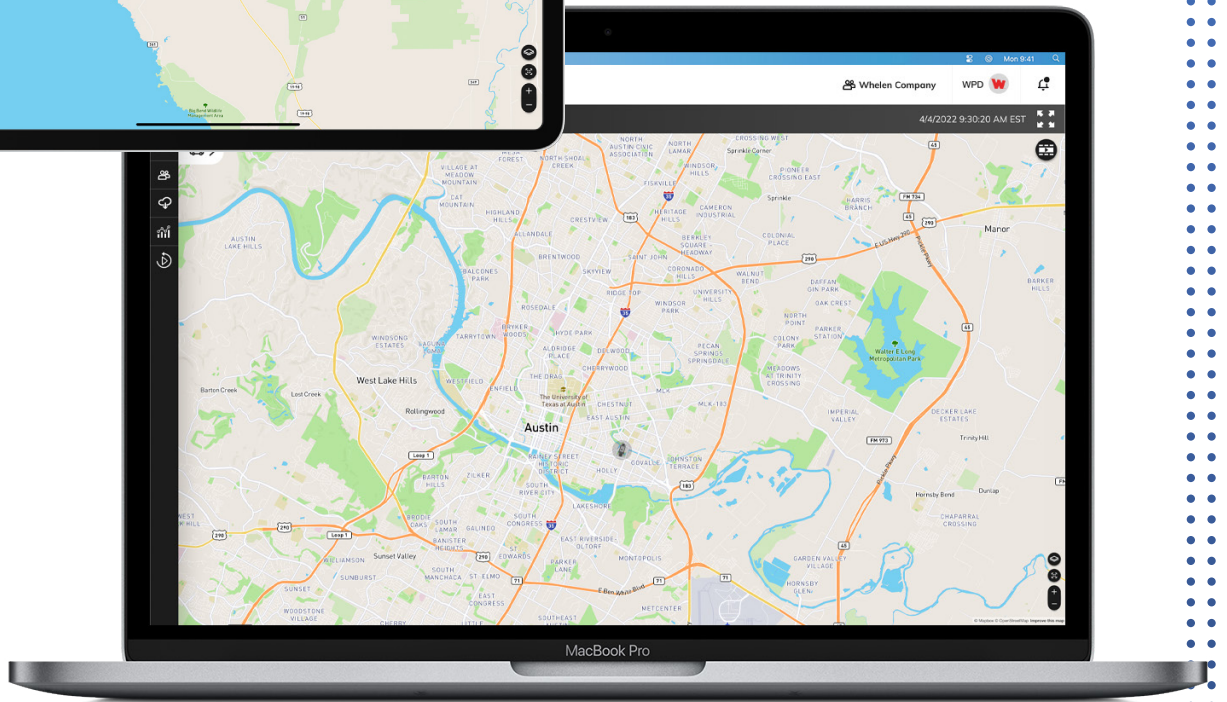
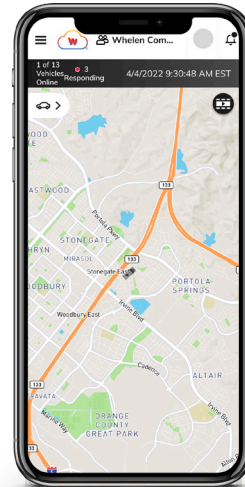
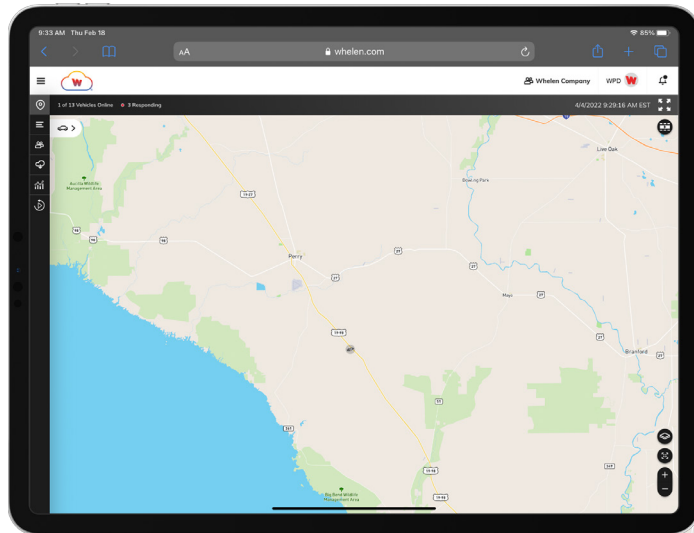
- Aerodynamic design (exterior)
- Low-loss, high-quality cables from the antenna to the VSG provide a strong signal
- IP67 rated (exterior)
- Exterior antenna: 7.08" L x 2.76" W x 2.41" D
- Interior antenna: 7.01" L x 2.36" W x 0.75" D





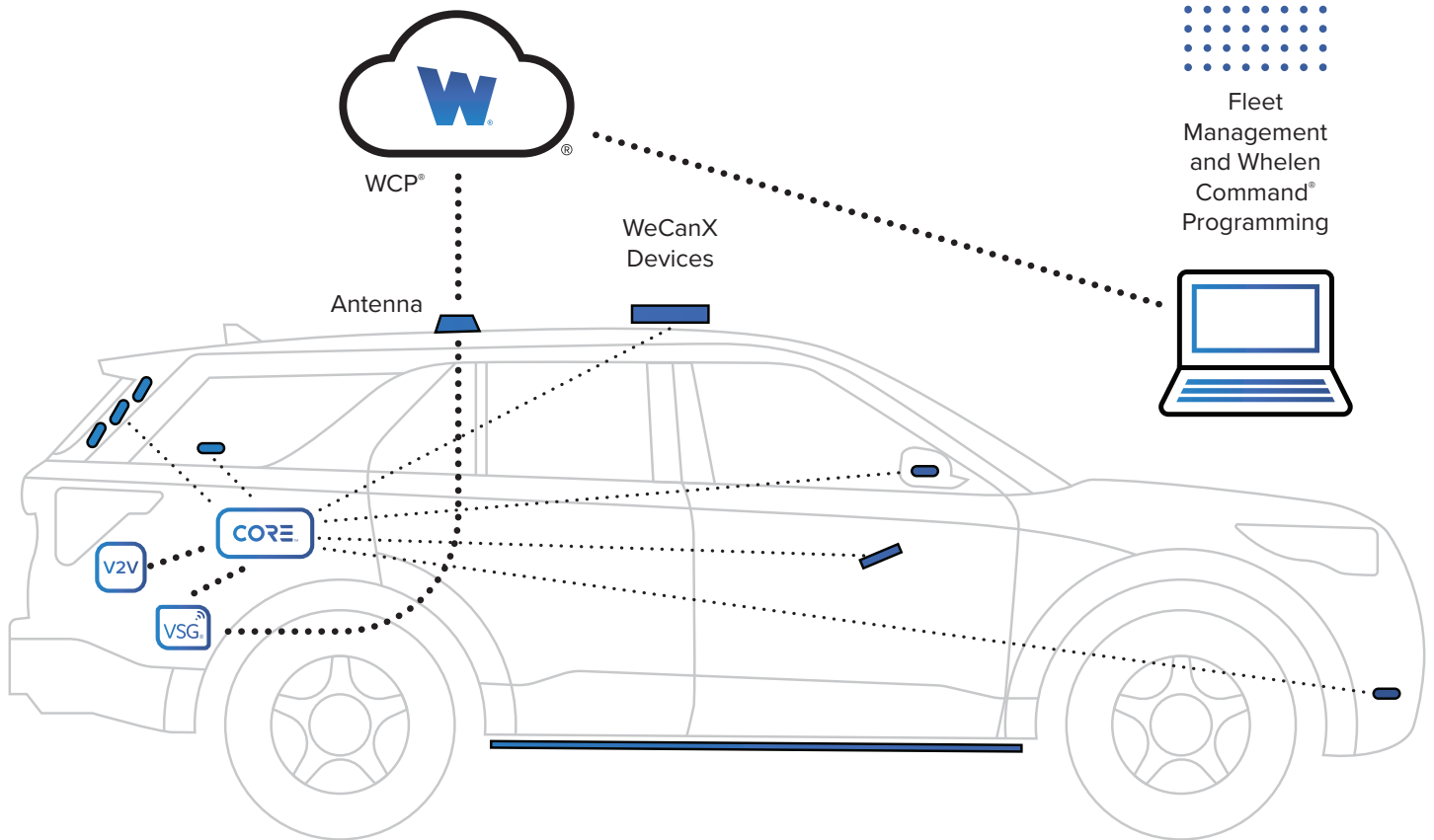
# MANAGE YOUR FLEET ANYWHERE, FROM ALL YOUR DEVICES

With the Whelen Cloud Platform®, you can access and manage your registries and fleet vehicles from your computer, smartphone, or tablet – for easy accessibility, wherever you are.



# ALL WHELEN DEVICES, ONE SEAMLESS EXPERIENCE

When you use WeCanX® products, CenCom Core®, or the Whelen Cloud Platform®, you're able to do incredible things to keep everyone safe. When you use them together, you can fully integrate and connect your Whelen products.





Whelen  
Programming  
Software

Whelen Hardware

Whelen  
Web-Based  
Software

Whelen Command®

CenCom Core®  
WeCanX® devices  
Vehicle Safety Gateway®

The Whelen Cloud Platform®



# Whelen Cloud Platform<sup>®</sup>

Discover more at  
[whelen.com/cloud](https://whelen.com/cloud)

