

# Whelen Command® CenCom Core® Output Diagnostics



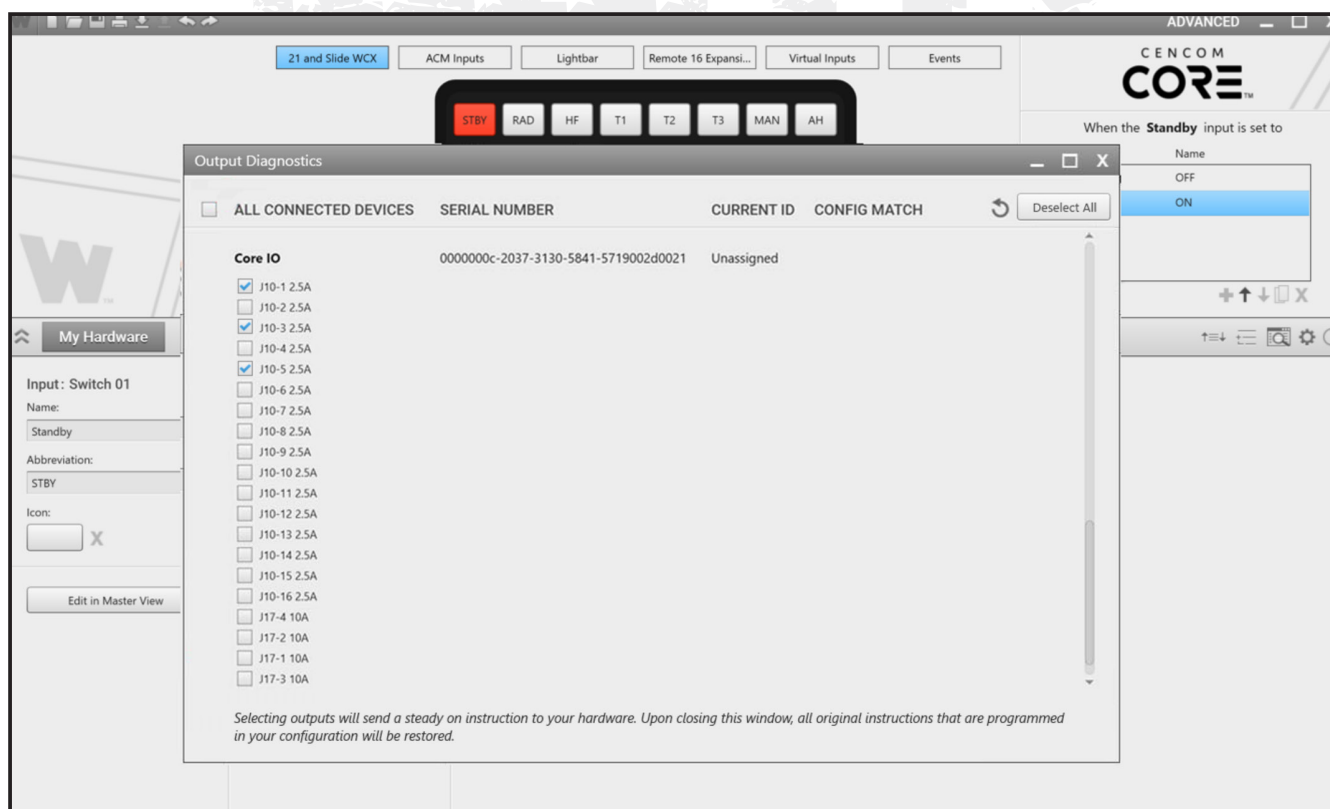
NEW FEATURE RELEASE • MARKET ADVISORY

MA:0071 • 05/2024

A new time-saving functionality is now available in the latest update (Version 2.3.0.0) of Whelen Command® software for CenCom Core® control systems. With **Whelen Command CenCom Core Output Diagnostics**, Core™ system outputs can now be activated directly within the Command software by connecting Core systems to Command via a USB cable.

Previously, users were required to transfer configurations to hardware and perform manual tests through the Core control head to validate output installations and confirm Steady-Lock™ or Scan Lock™ has been properly applied. This new update eliminates the need for manual configuration programming and allows users to enjoy enhanced efficiency, saving time and streamlining the process of identifying and activating specific outputs.

Please note this feature only supports CenCom Core control systems and NOT Core Control Points.



Core Output Diagnostics in Whelen Command

Please contact your Whelen sales representative with any questions.